



Panasonic SDR H-100 HDD Replacement

If you need to replace the HDD of your...

Written By: Caleb Osborne



INTRODUCTION

If you need to replace the HDD of your Panasonic SDR H-100, follow this guide. The HDD is where the memory is stored for the camcorder. Without this the videos and pictures that are taken cannot be saved.

TOOLS:

[Screwdriver](#) (1)

[Tweezers](#) (1)

[iFixit Opening Tool](#) (1)

Step 1 — Remove Bottom Screws



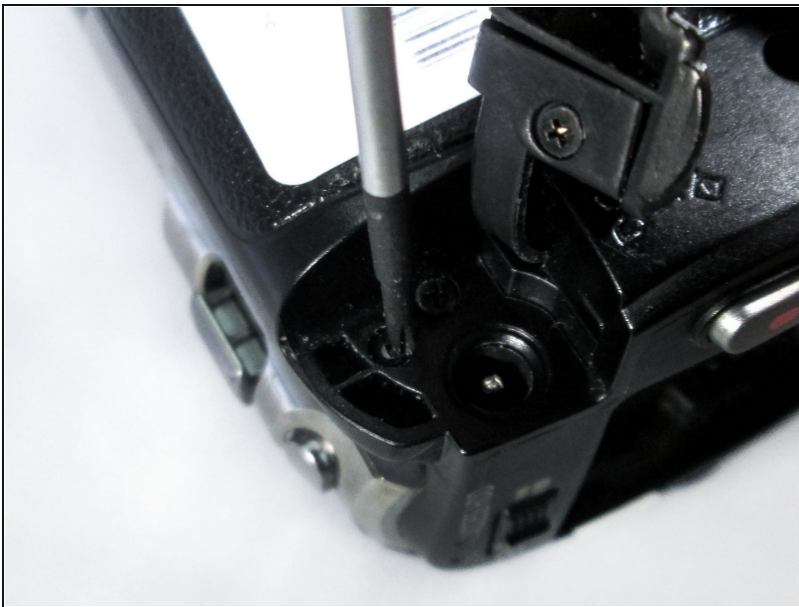
- Remove the four 4-mm screws on the bottom of the camcorder.
 - ① The screws are two different colors: three blacks and one silver.

Step 2 — Remove Side Screws



- Remove the three 6-mm screws on the hand-strap side of the camera.

Step 3 — Remove DC Input Terminal Screws



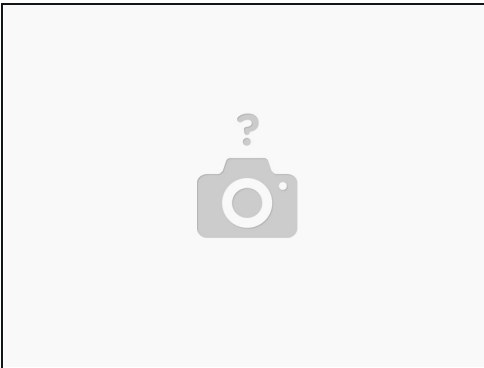
- Pull out the charging port (DC input terminal) cover and remove the 4-mm screw located next to the input terminal.

Step 4 — Remove LCD Monitor Screws



- Flip out the LCD screen to expose the inner screws. Remove the two black 4-mm screws.
 - ① One screw is located by the hinge of the LCD screen. The second is close to the upper-right corner of the camcorder body.

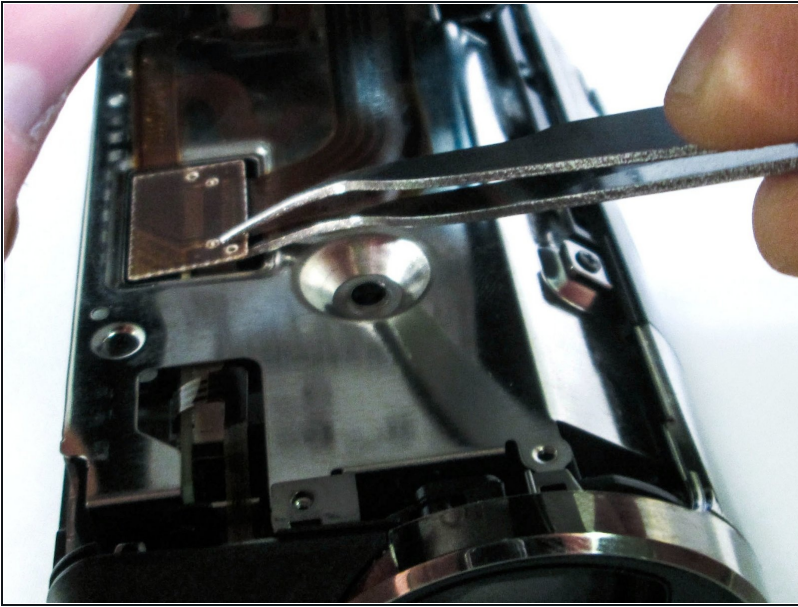
Step 5 — Detach Casing from Body



- Using a firm hold on both sides of the camcorder, gently pull apart the casing under the hand strap.
 - ① Pressure should be evenly distributed across entire device.

⚠ Detach gently so the ribbon cable is not damaged!

Step 6 — Detach Ribbon Cable from Body



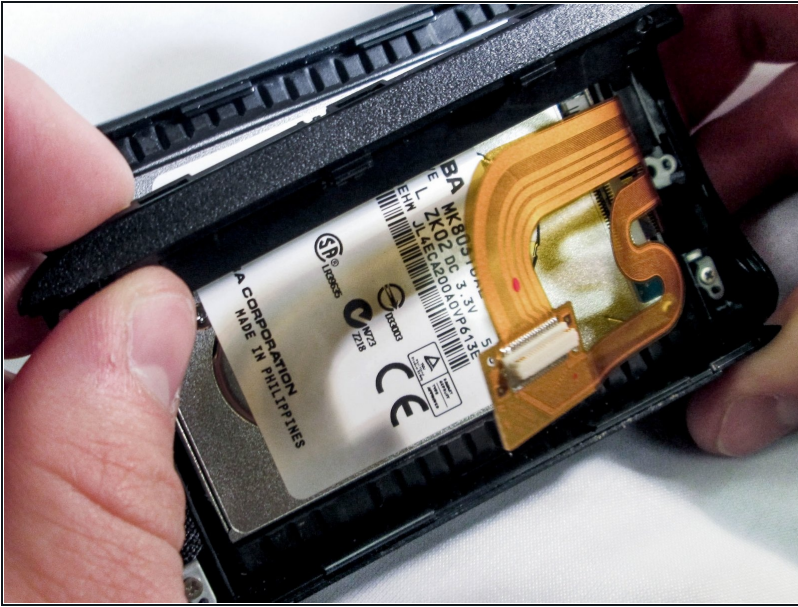
- Use [tweezers](#) to grab the ribbon cable at the connection point and slowly lift it away from the connector.
- ① This linkage point connects the HDD directly to the motherboard.

Step 7 — HDD



- Remove the two 4 mm silver screws located on the HDD casing.

Step 8



- Gently pull the black plastic hard drive case away from the body of the camera. This will expose the hard drive (HDD).

Step 9



- Pry off the HDD gently from the casing with a plastic opening tool.
- ① Make sure to run the tool underneath the HDD as you pry it off.

Step 10



- The HDD has been removed and ready to be replaced.

To reassemble your device, follow these instructions in reverse order.