



Garmin Nuvi 65LM Car Charger Fuse Replacement

This guide will teach you how to replace the fuse of the car charger provided to you with the Garmin Nuvi 65LM. Removing the fuse is fairly simple and can be done with your hands.

Written By: Kai Ling Liang



INTRODUCTION

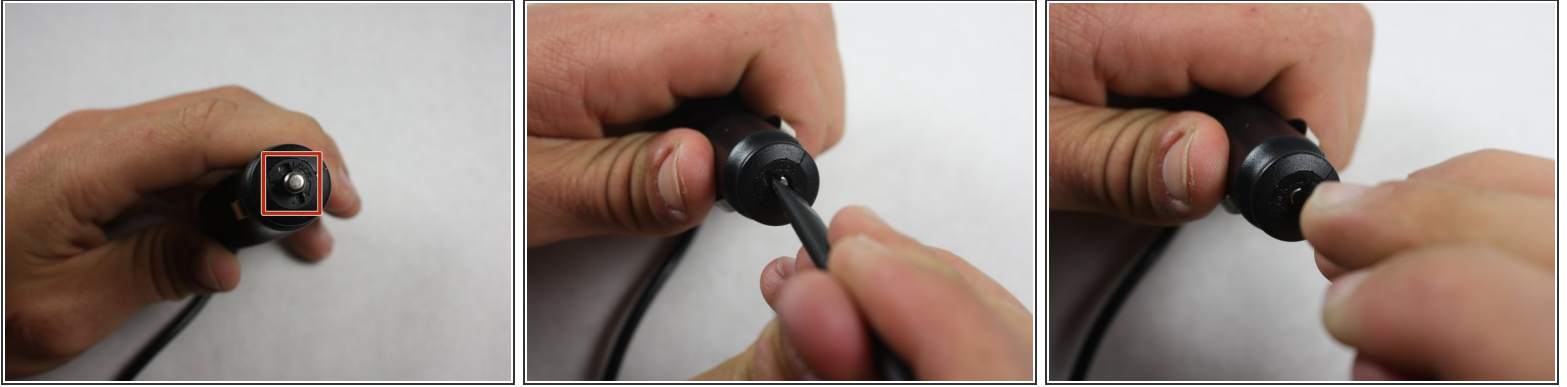
This guide will teach you how to replace the fuse of the car charger provided to you for the Garmin Nuvi 65LM.



TOOLS:

- [Spudger](#) (1)
-

Step 1 — Car Charger Fuse



- Hold the car charger with your hands so the metal tip is facing towards you.
- Insert the flat end of the spudger into the slotted groove of the black plastic surrounding the metal tip by pressing down on the tip.
- Simultaneously press down and turn the spudger counter-clockwise 90 degrees to unlock the black plastic cap.

Step 2



- Carefully take off the black plastic cap surrounding the charging tip with your hands.
- Use your hands to pull off the silver metal tip away from the charger.

Step 3



- Turn the charger compartment over and carefully dump the fuse into your hand.

To reassemble your device, follow these instructions in reverse order.