



# Garmin Nuvi 65LM Battery Replacement

Having trouble with your GPS not holding a charge? This guide will show you how to remove the battery from a Garmin Nuvi 65LM GPS.

Written By: Kai Ling Liang



## INTRODUCTION

This guide will show you how to remove the battery from the Garmin Nuvi 65LM GPS. To remove the battery, the motherboard must also be removed after separating the front and back device casing. To put in a new battery, follow these steps in the reverse order.



### TOOLS:

- [iFixit Opening Tools](#) (1)
- [T5 Torx Screwdriver](#) (1)
- [Spudger](#) (1)
- [Magnetic Project Mat](#) (1)



### PARTS:

- [Garmin Nuvi 65 Replacement Battery](#) (1)


## Step 1 — Plastic device casing



- Place the device on a flat surface with the screen facing down.
- Remove the four 4.80 mm T5 screws on the corners of the device with a T5 Torx screwdriver.

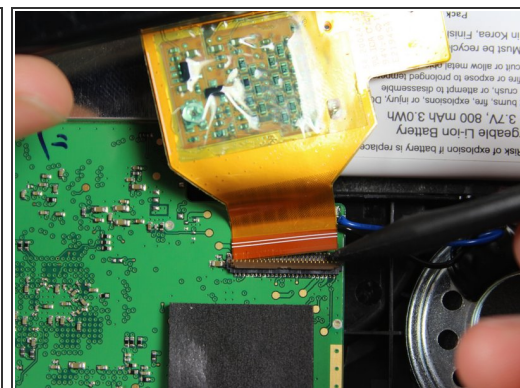
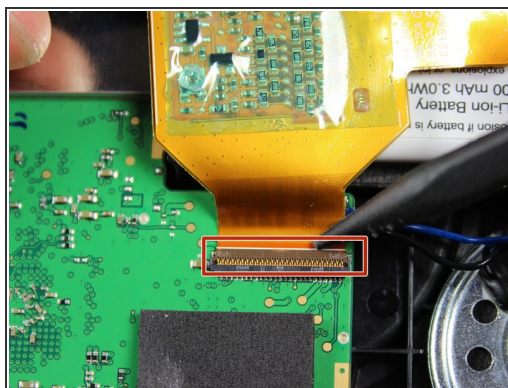
## Step 2



 There is a ribbon cable that will still connect the front and back panels once they are pried part.

- Use the plastic opening tool to gently pry apart the front and back casing panels. Repeat this at multiple locations around the edge of the device. You should hear the clips that hold the front and back together pop apart.
- Once there is a large gap between the front and back casing panels, use your hands to separate the two halves.

## Step 3

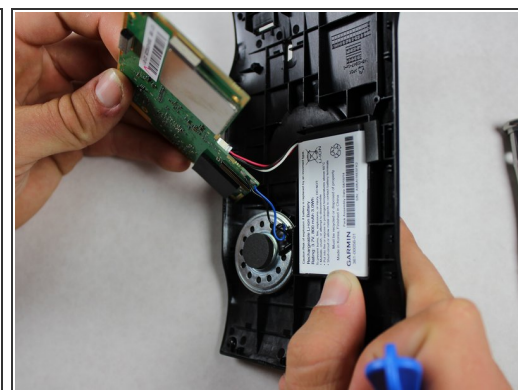


- Use a spudger to pop up the ZIF connector tab that fastens the ribbon cable to the motherboard.
- Gently pull the front panel away and set it on your flat work surface.

This document was generated on 2020-11-16 12:16:37 AM (MST).

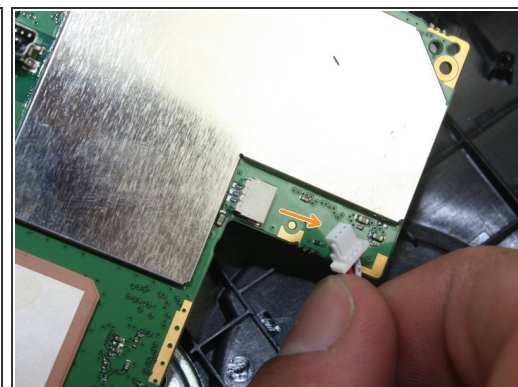
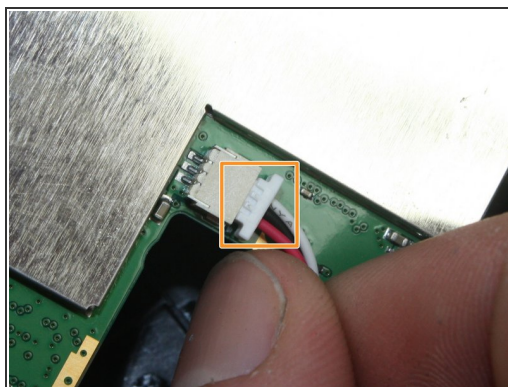
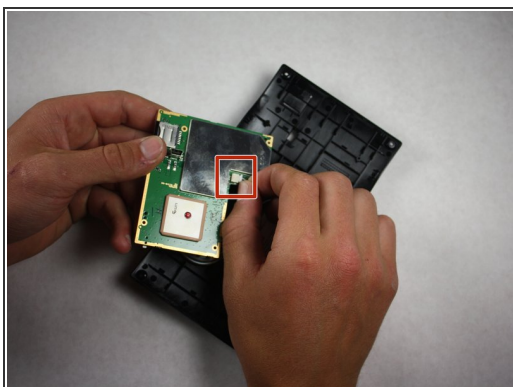


## Step 4 — Battery



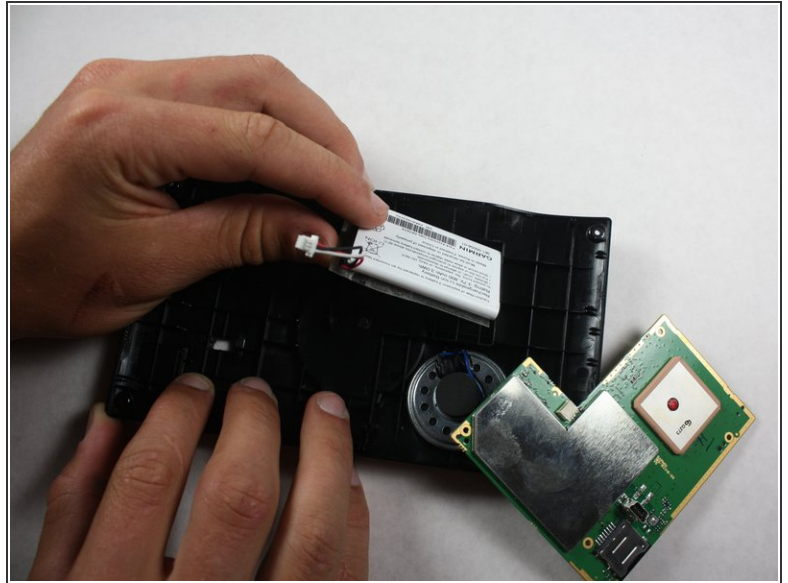
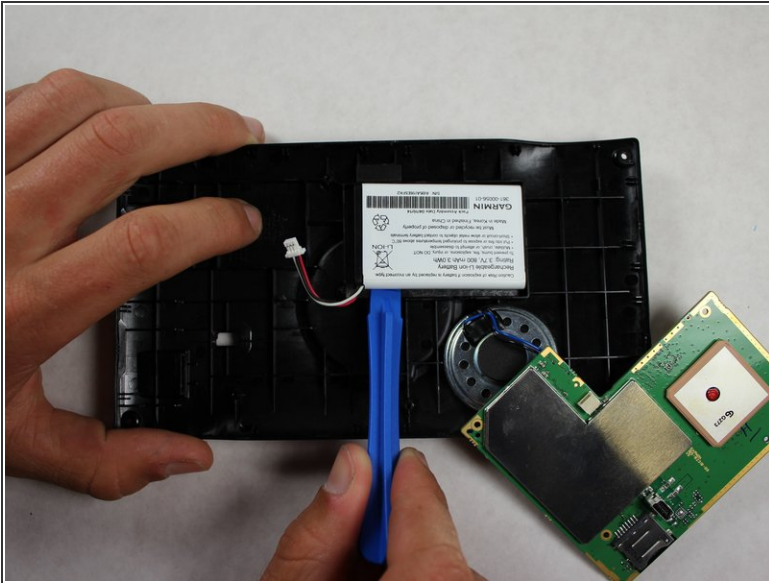
- Make sure the GPS is laying on a flat surface with the open side showing.
  - Unscrew the four marked 4.00 mm screws with a T5 torque screwdriver
  - ⓘ Be sure to keep track of where you place the screws. A magnetic project mat works great for this.
  - Gently lift the motherboard off of the plastic casing.
- ⚠ The speaker and battery are still connected to the motherboard so do not pull the motherboard completely away from the casing.

## Step 5



- Turn the motherboard over to find the plug which connects the battery to the motherboard.
- Gently disconnect the plug by catching on the raised rib of the plug with your fingernail. Then pull the plug away from the connection.

## Step 6



- Set the motherboard down out of the way of the battery.
- Using the flat end of the plastic opening tool carefully pry the battery and its adhesive away from the casing.
  - ❗ The adhesive holding the battery down is very strong. Prying the battery up may take some force but go slowly and carefully in order to avoid damaging the battery.
- Once most of the adhesive is unstuck from the casing, use your hands to remove the battery completely.

To reassemble your device, follow these instructions in reverse order.