



Garmin Nuvi 65LM Screen Replacement

This guide will show you how to replace your device's screen.

Written By: James Crocitto



INTRODUCTION

This guide is meant to teach how to replace the screen of a Garmin Nuvi 65LM. By An easy fix for anyone with a cracked or malfunctioning screen.

TOOLS:

- [iFixit Opening Tools](#) (1)
 - [T5 Torx Screwdriver](#) (1)
-


Step 1 — Plastic device casing



- Place the device on a flat surface with the screen facing down.
- Remove the four 4.80 mm T5 screws on the corners of the device with a T5 Torx screwdriver.

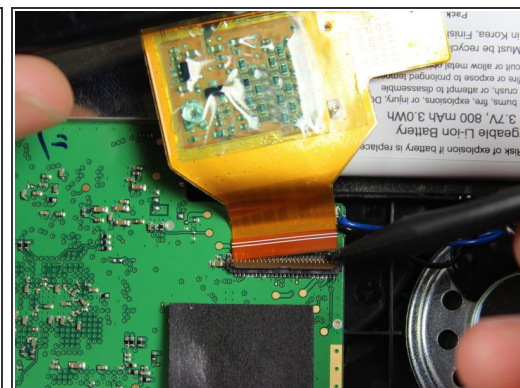
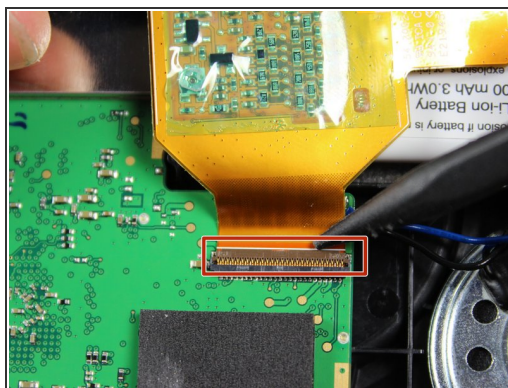
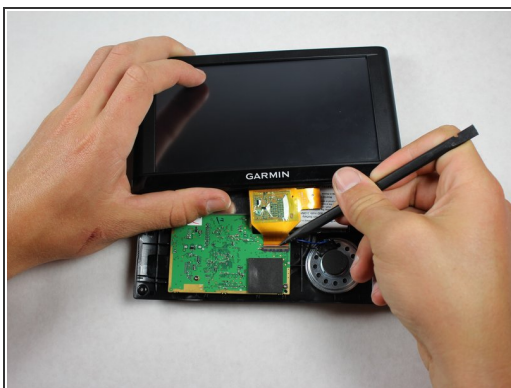
Step 2



 There is a ribbon cable that will still connect the front and back panels once they are pried part.

- Use the plastic opening tool to gently pry apart the front and back casing panels. Repeat this at multiple locations around the edge of the device. You should hear the clips that hold the front and back together pop apart.
- Once there is a large gap between the front and back casing panels, use your hands to separate the two halves.

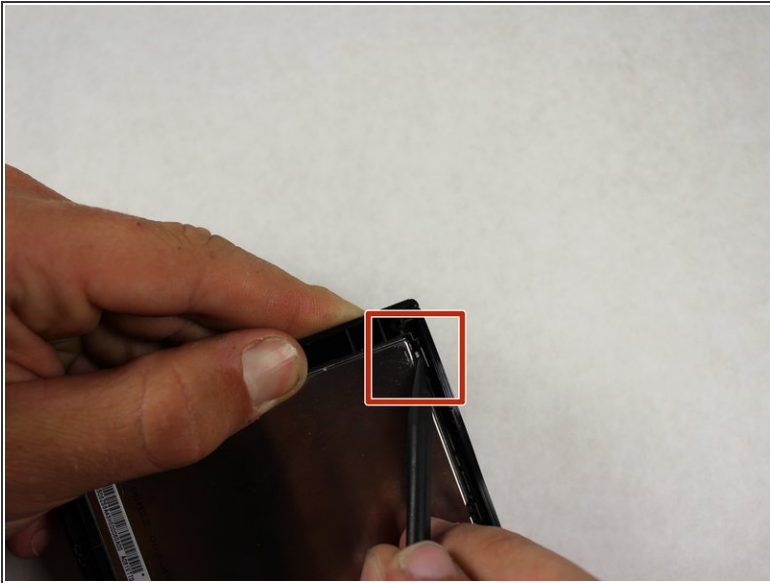
Step 3



- Use a spudger to pop up the ZIF connector tab that fastens the ribbon cable to the motherboard.
- Gently pull the front panel away and set it on your flat work surface.

This document was generated on 2020-11-26 04:00:01 AM (MST).

Step 4 — Screen



- Use the flat end of the spudger to push back the casing clips that hold the screen onto the front casing.
 - ⓘ Apply light pressure to the front of the screen as you push the casing clips back. This will keep the clips from clicking back into place.
- Once all clips are pushed back, the screen will easily lift away from the front casing panel.

To reassemble your device, follow these instructions in reverse order.