



Microsoft Kinect Case Replacement

Replacement for the Microsoft Xbox 360 Kinect case.

Written By: Sumi Kime



INTRODUCTION

This guide will show how to remove the casing of the Kinect. This is necessary to replace many of the components in the Kinect that may become damaged.

TOOLS:

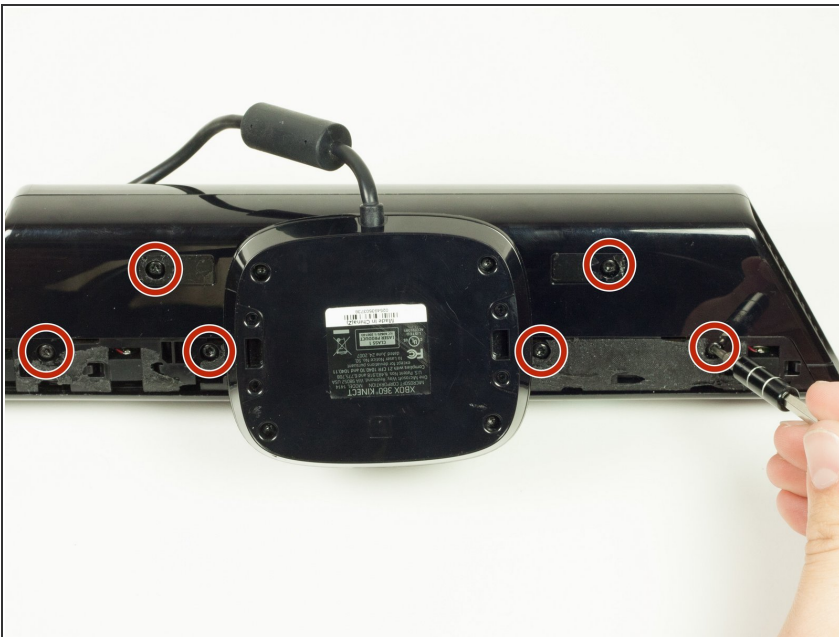
- [Metal Spudger](#) (1)
 - [T10 Torx Screwdriver](#) (1)
-

Step 1 — Case



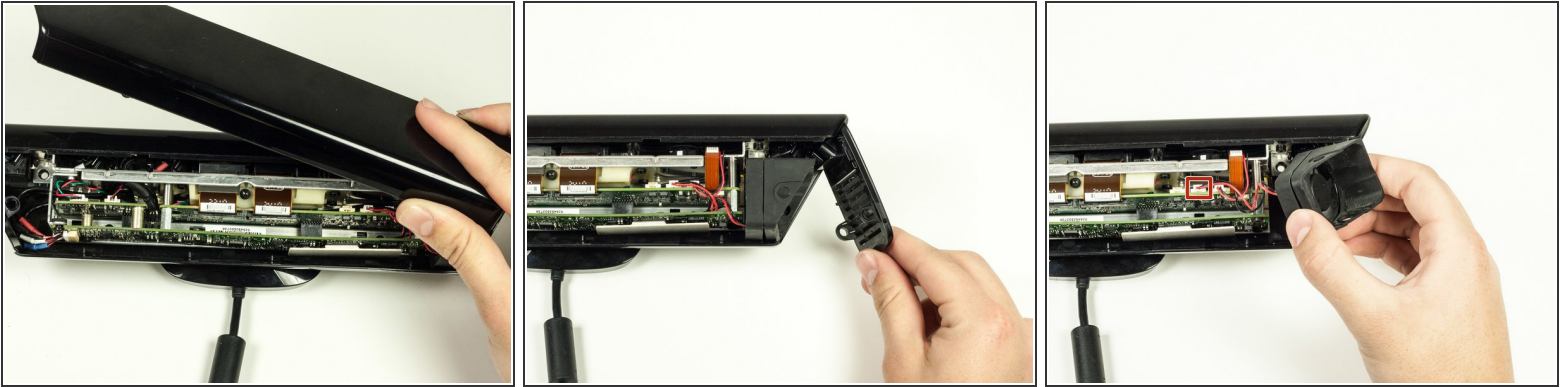
- Remove the two plastic strips off the bottom of the main Kinect housing using the metal spudger's sharper side.
 - Peel off the two Xbox 360 stickers from the bottom of the case to reveal two hidden screws.
- i** Some force may be required to remove the adhesive. Applying heat to the adhesive may make it easier to remove.
- !** Do not overheat as it may cause damage to the internal components.

Step 2




- Unscrew the six 12mm T10 Torx screws.

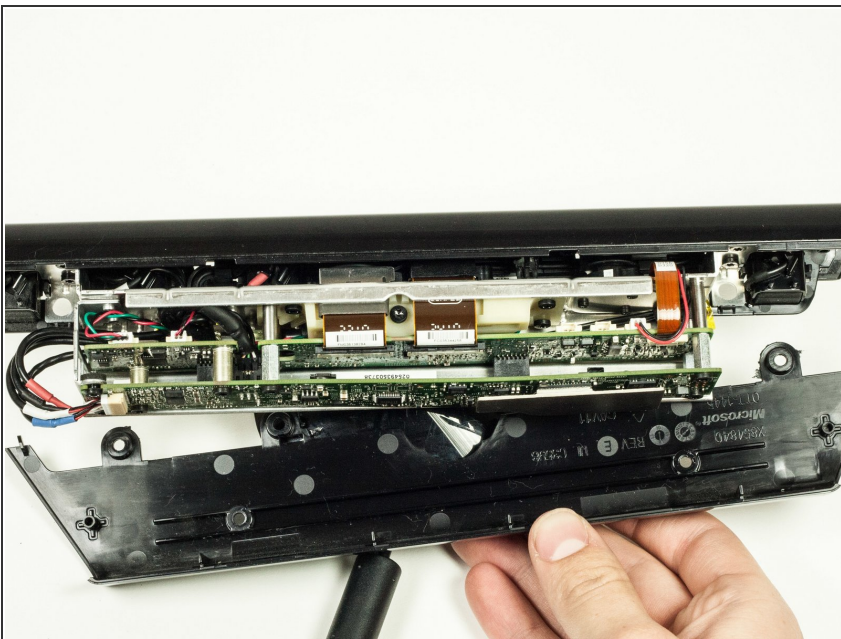
Step 3




- Remove the top portion of the case from the rest of the body.
- Detach the side portions of the case from the body.
- Remove the fan piece from the side of the body. Unplug it from the logic board to fully remove it.

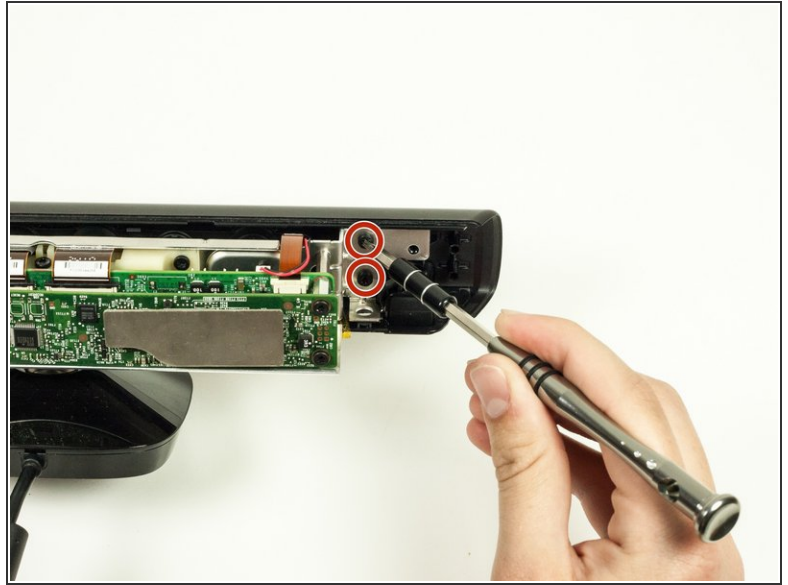
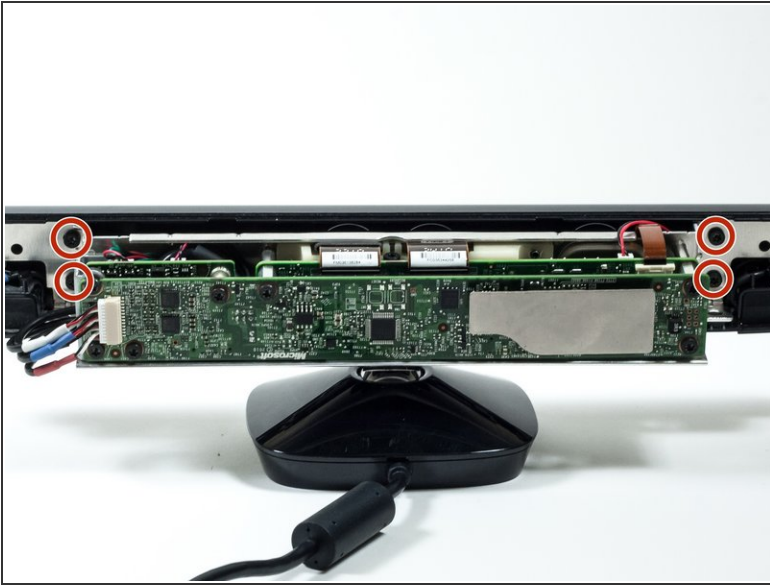
 When unplugging the fan, be sure to pull from the white connector at the end of the wire to avoid breaking it.

Step 4



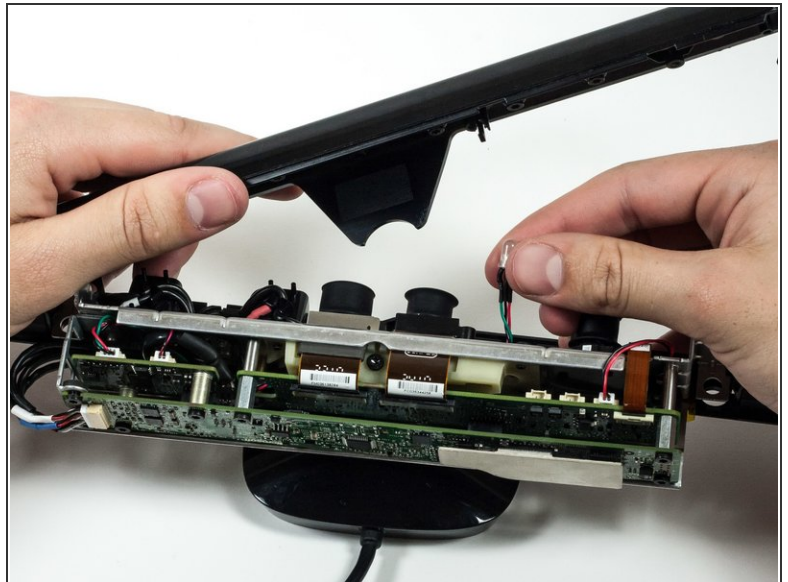
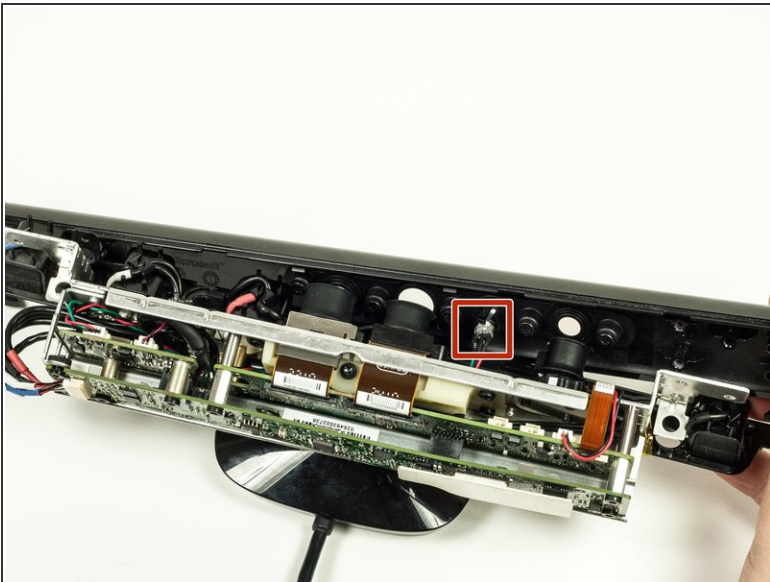
- Remove the bottom portion of the case by sliding it out from under the body.
-  The bottom of the case may be difficult to remove if there is any residual adhesive. If the residual adhesive prevents you from removing the case, apply gentle heat and wiggle the case out.

Step 5



- Remove the four 7mm T10 Torx screws (two on each side of the metal body).

Step 6



- Remove the front portion of the case containing the lens coverings for the cameras.
- The LED component is connected to the front portion of the case. To disconnect it, just pull it out of its plastic connector.

To reassemble your device, follow these instructions in reverse order.