



Sony Handycam CX260V Camera Lens Replacement

This guide will allow people to be able to replace the camera lens to the CX260V. The guide gives detailed instructions on how to take apart the camera to access the main internal problems.

Written By: Dominic Franklin



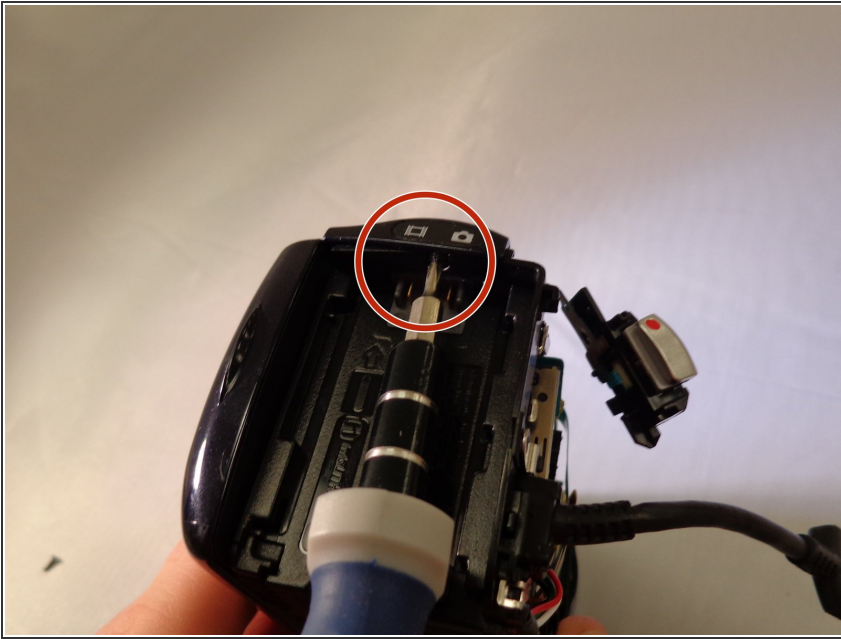
INTRODUCTION

This guide will provide accurate steps in replacing the Camera Lens for the CX260V.

TOOLS:

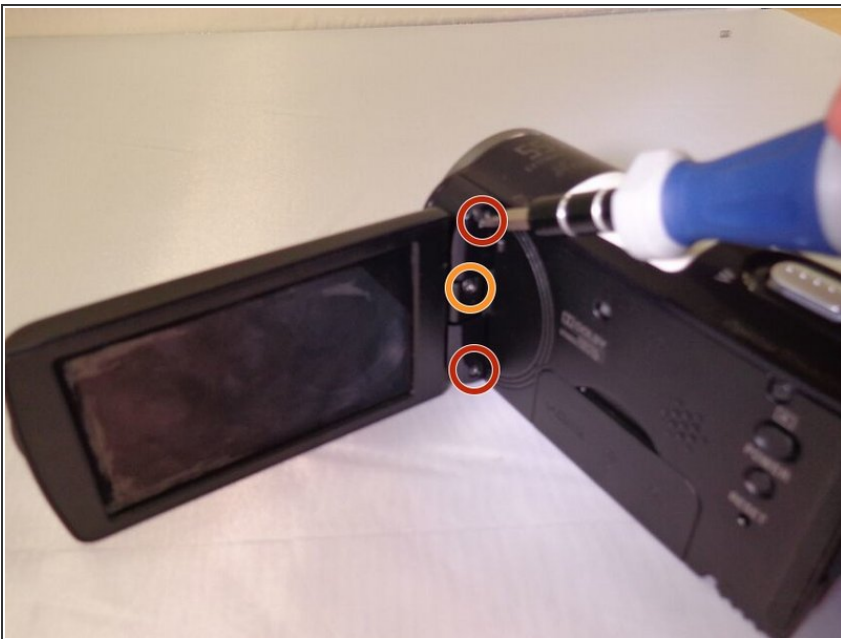
- [Phillips #00 Screwdriver](#) (1)
 - [Tweezers](#) (1)
-

Step 1 — Sony Handycam CX260V Housing Disassembly



- Use a Phillips #00 screwdriver to remove the one 3mm and two 5mm screws located in the battery assembly area.

Step 2



- Remove the two 5mm screws located on the top left and bottom of the camera.
- Remove the 3mm screw located in the middle of the joint attaching the LCD screen to the device.

Step 3



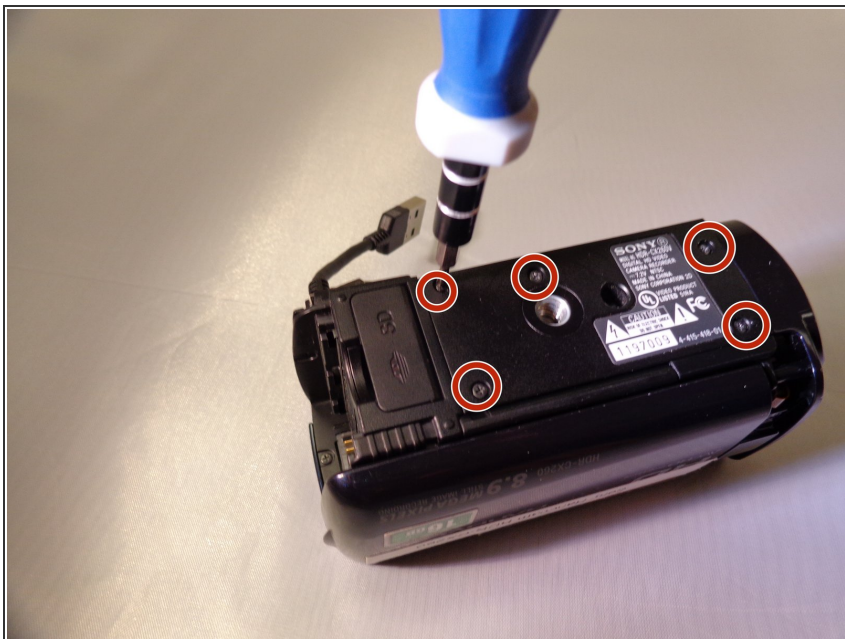
- Remove the two 5mm screws from the panel to the right of the LCD screen.

Step 4



- Use the plastic opening tool to remove the cover for the recording buttons.

Step 5



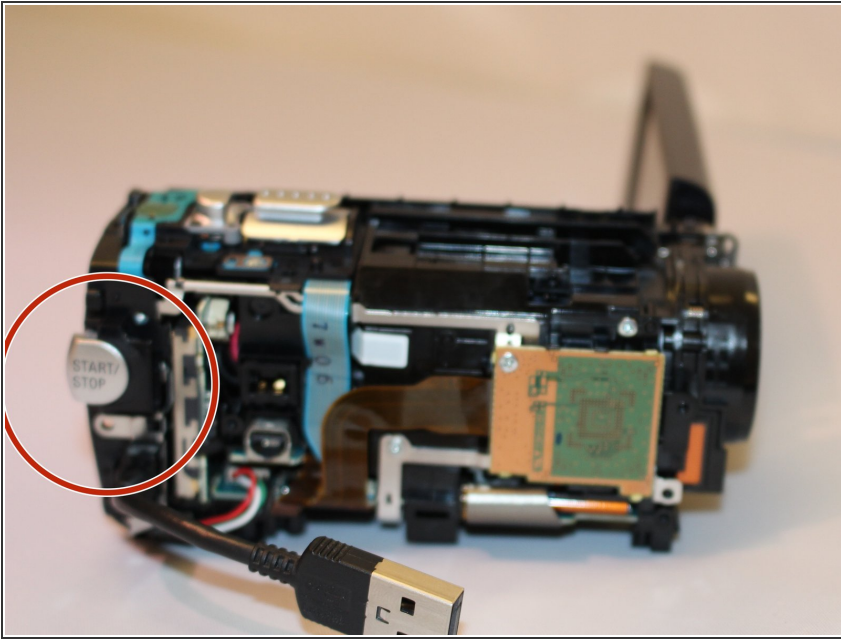
- Remove the five 5mm screws located on the bottom panel.
- Remove the bottom panel covering the internal motherboard.

Step 6



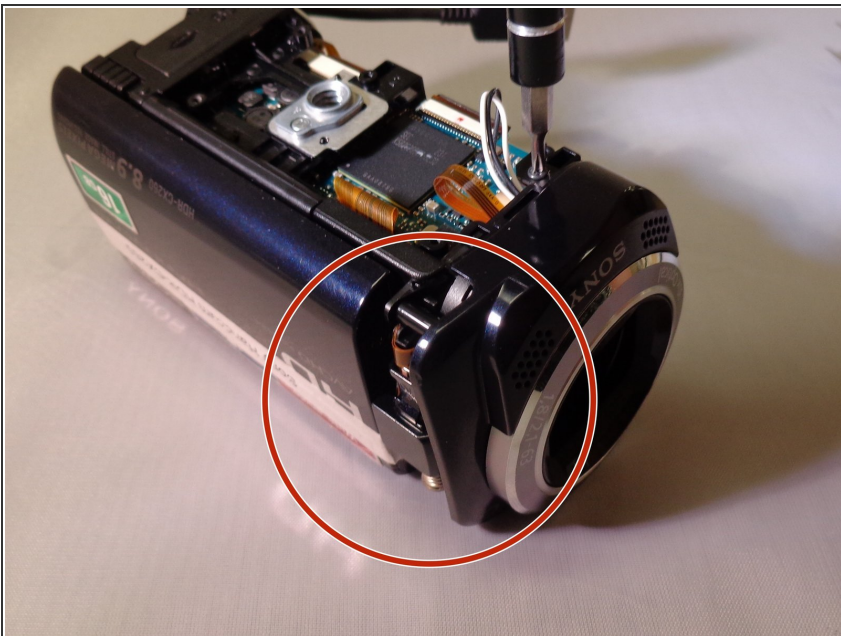
- Remove the 5mm screw located by the lens and two 5mm screws located under the handle.
- Remove the leather strap from the device.

Step 7



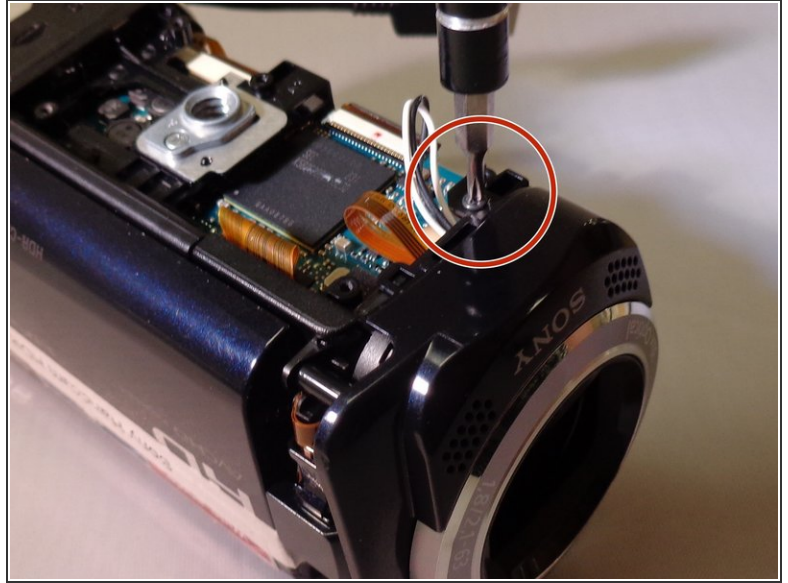
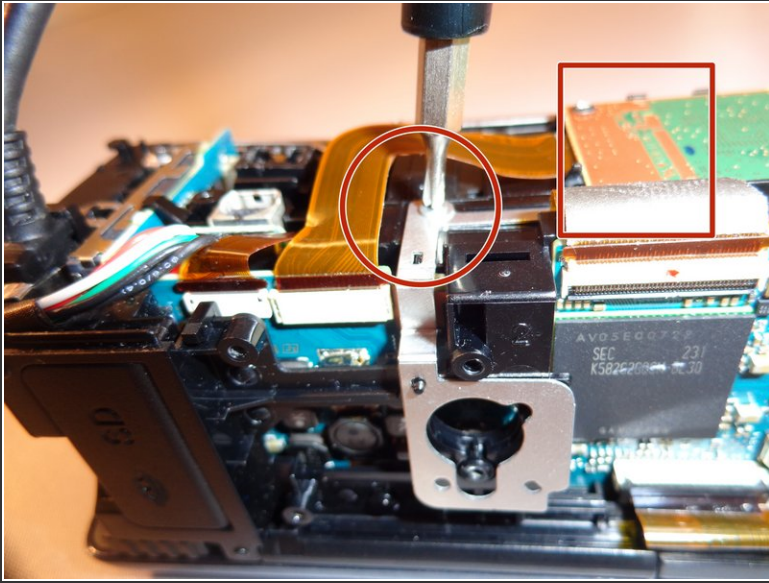
- Remove the 5mm screw to the left of the Record button.
- Remove the entire right-side panel where the leather strap was located.

Step 8



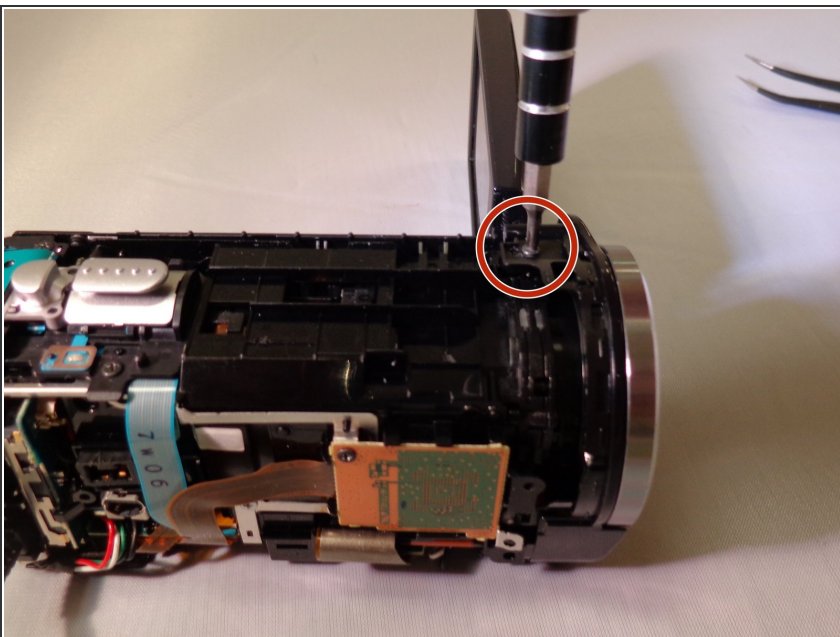
- Use a spudger to remove the LCD joint cover.

Step 9



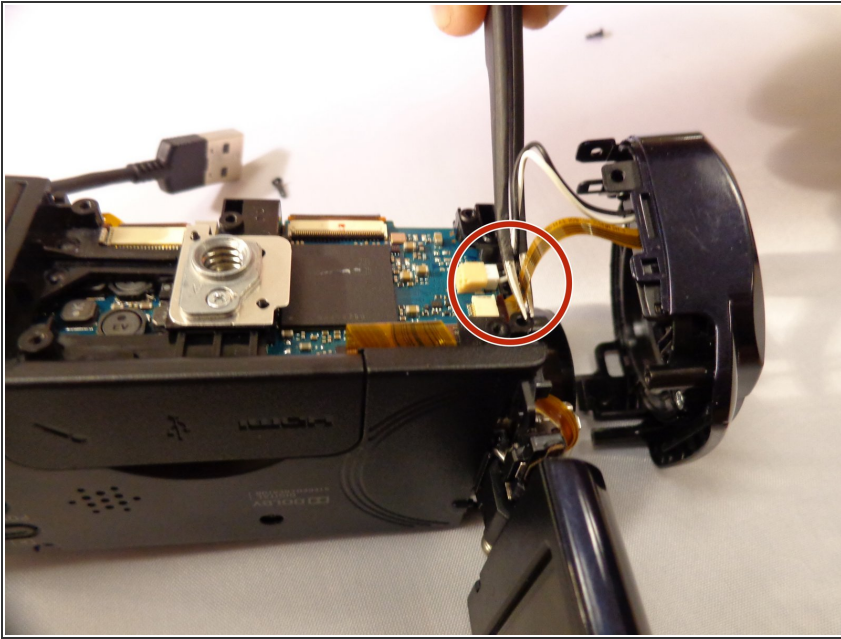
- Remove the three black 5mm screws and one silver 4mm screw located on the front right-side of the camera, near the orange motherboard.
- ⓘ The silver screw is located on the front right-side of the camera and is attached to the main panel.

Step 10



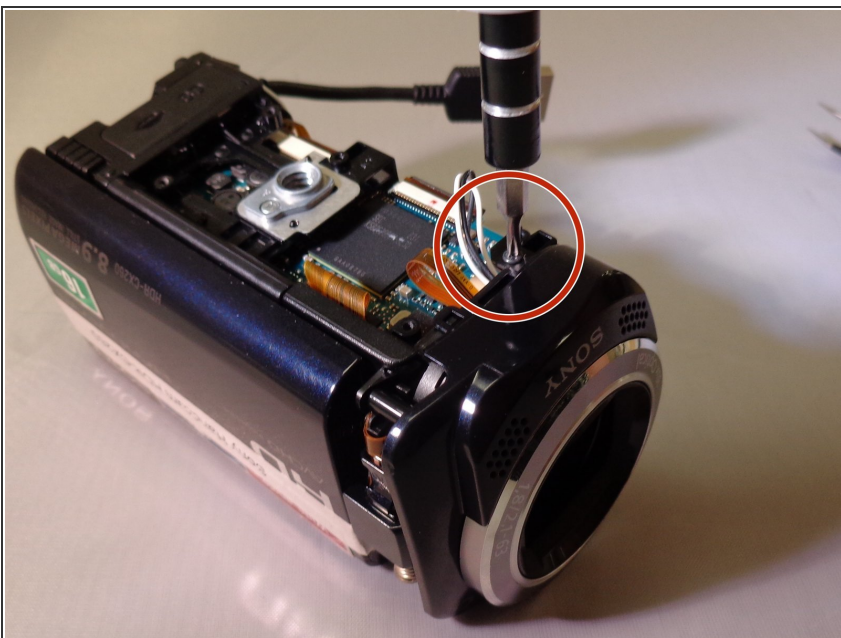
- Remove the 5mm screw located on the top left near the camera lens.

Step 11



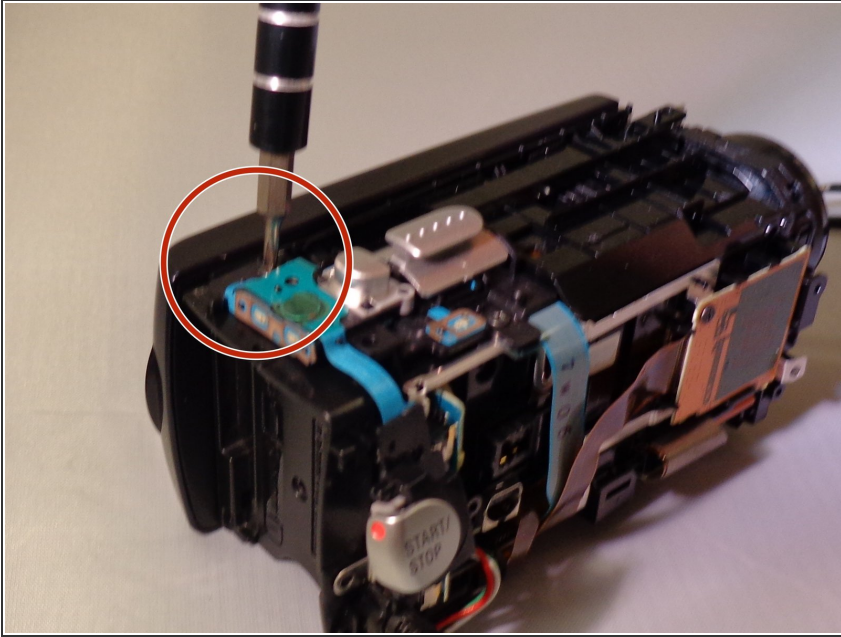
- Using tweezers, carefully detach the two wires connected to the bottom motherboard portion of the camera.
 - ⓘ One white wire, one black wire, and one flat yellow wire are connected to the lens panel.
- Remove the lens panel.

Step 12



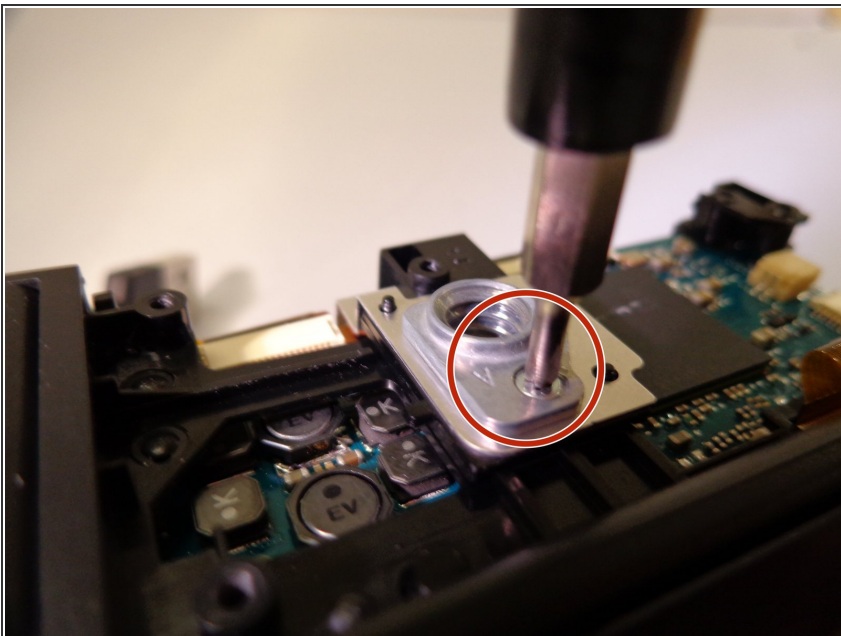
- Remove the three 5mm screws.
 - ⓘ One is located at the bottom of the lens area, and the other two are on the top left and right of the lens area.
- Carefully remove the camera lens with your hands or a spudger.
- ★ There are three springs located underneath the lens. Make sure to not lose them.

Step 13



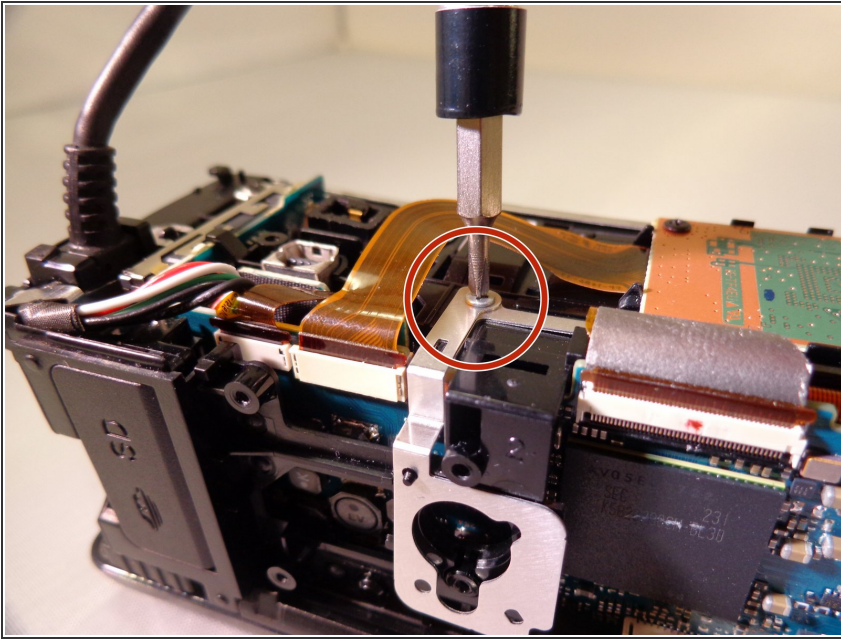
- Remove one 5mm screw located on the back left section near the zoom and picture control capturing button.
- There are two flat blue wires keeping the buttons connected to the main assembly. Carefully set them aside or unplug them.
- ⓘ This partially removes the zoom and picture capturing control.

Step 14



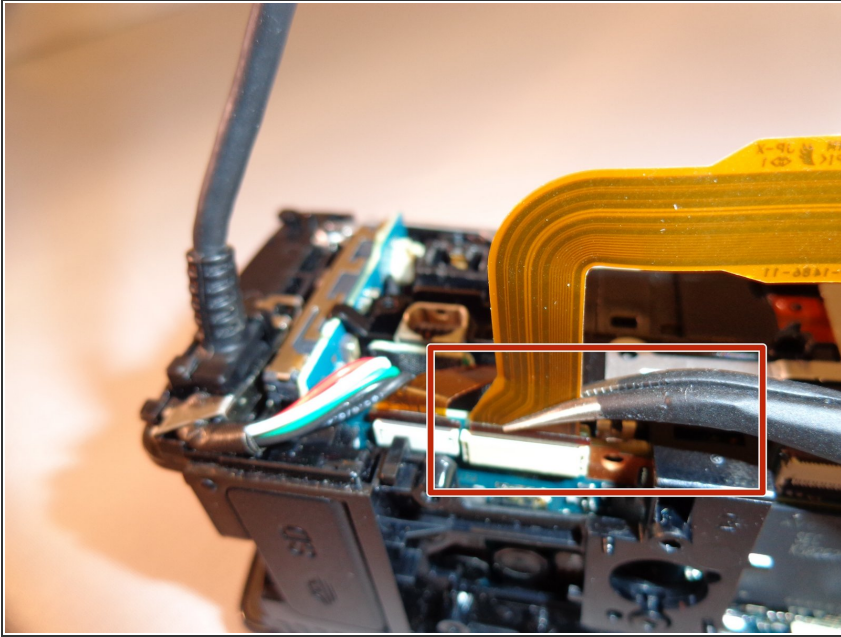
- Remove one silver 5mm screw located near the tripod mount.
- Remove the tripod mount screw that has the mount assembly underneath.

Step 15



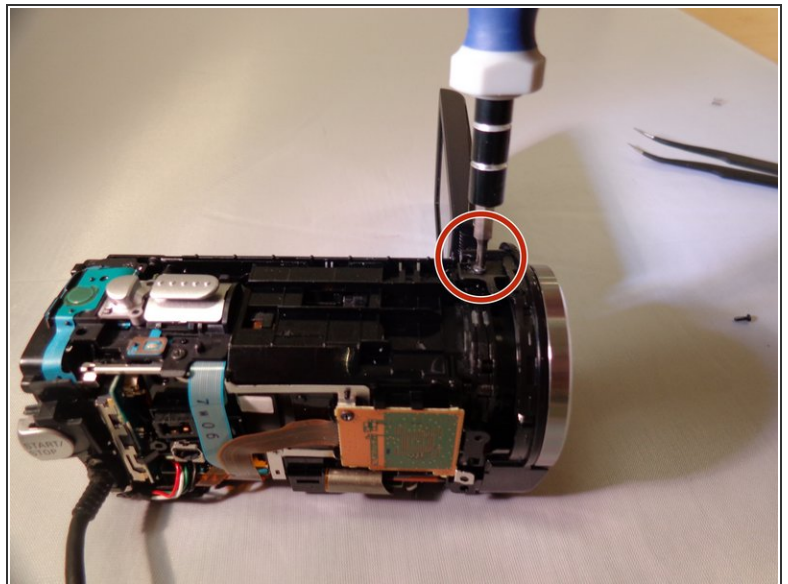
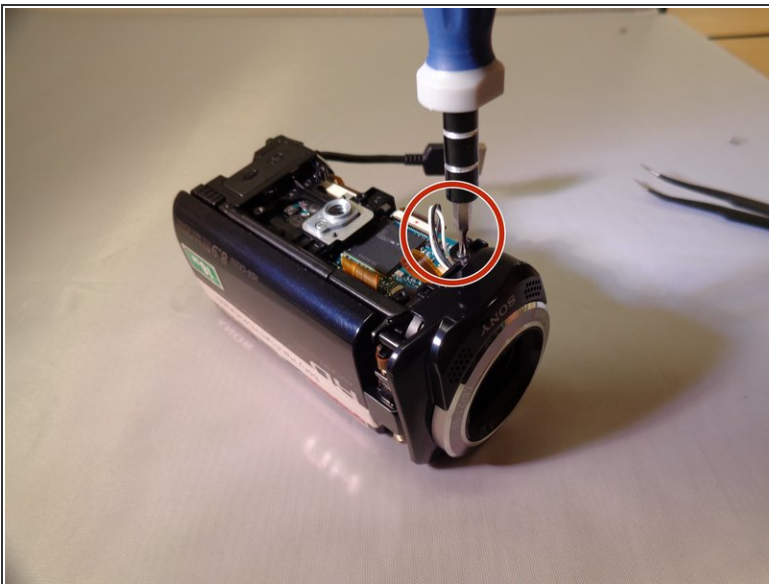
- Remove the silver 5mm screw located on the front right side of the camera by the orange motherboard.
- Unplug the wire.
- Remove the silver 5mm screw underneath the wire.

Step 16



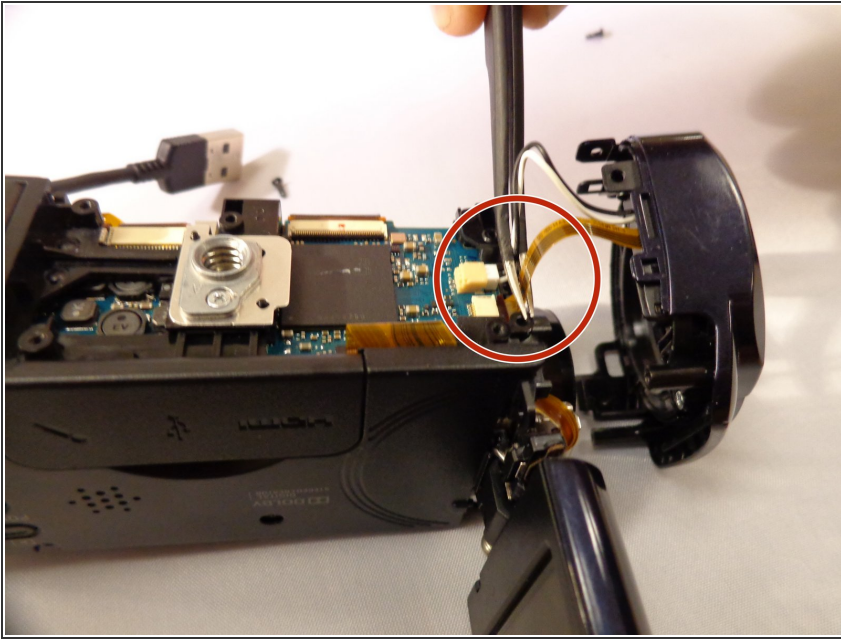
- Using tweezers, release the clip attaching the main internal system to the mainframe. This allows the rest of the camera to be freely taken apart.
- ❗ The side panel will have cords running through the frame. If you unplug these, the frame will be removable.

Step 17 — Camera Lens



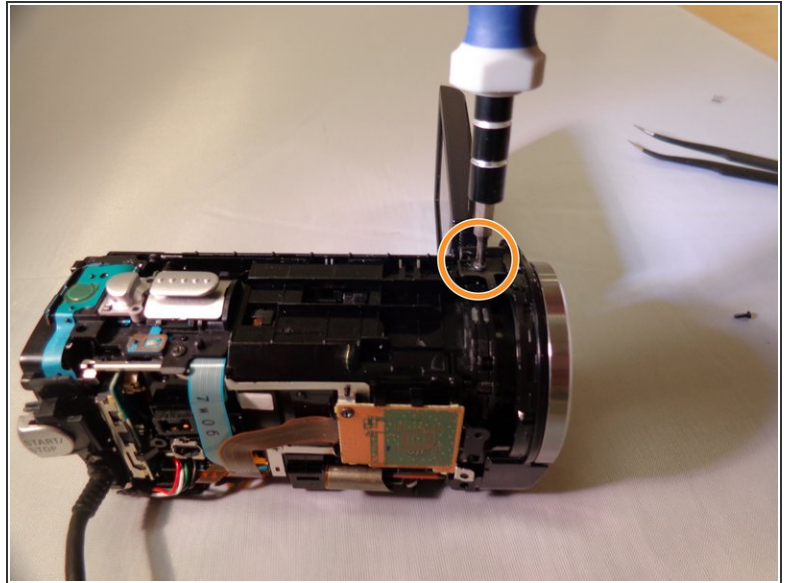
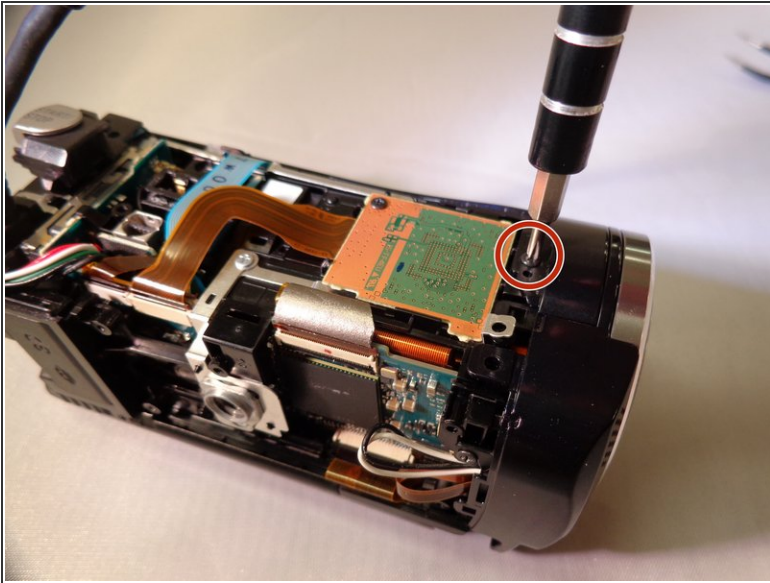
- Using the PH #00 size screw driver, unscrew one 5 millimeter screw located on the top left near the lens of the camera.

Step 18



- Using a pair of tweezers, carefully disassemble the two wires connected to the bottom motherboard portion of the camera.
- ⓘ There is one white & black wire and one flat yellow wire that are connected to the lens panel.

Step 19



- Using the screwdriver, locate the three five millimeter screws.
 - ❗ One is located on the bottom of the lens area, and the other two are located on the top left and right of the lens area.
- Carefully remove the camera lens with your hands or spudger tool.
 - ☑ There are three springs located underneath the lens. (Make sure not to lose them).

To reassemble your device, follow these instructions in reverse order.