



# Gigabyte P34G Wireless Card Replacement

The wireless card allows the computer to...

Written By: yeunghayden



# INTRODUCTION

The wireless card allows the computer to connect to the internet or another device through Wi-Fi. Some wireless cards may also have a Bluetooth adapter.

Make sure you are grounded before starting. To ground yourself, simply touch a metal object that is in contact with the floor for a few seconds.

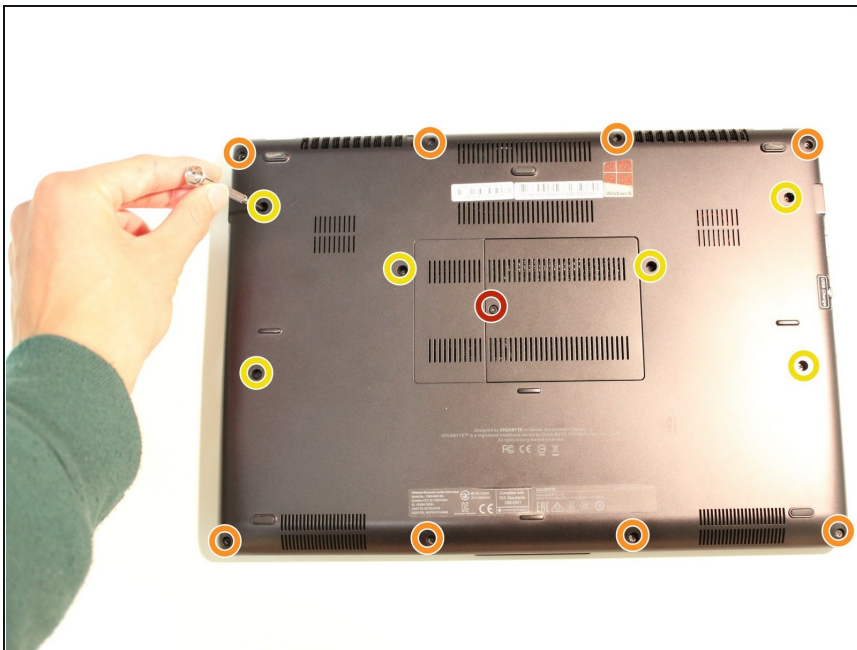
## TOOLS:

Phillips #0 Screwdriver (1)

## PARTS:

Compatible Laptop Wireless Card (1)

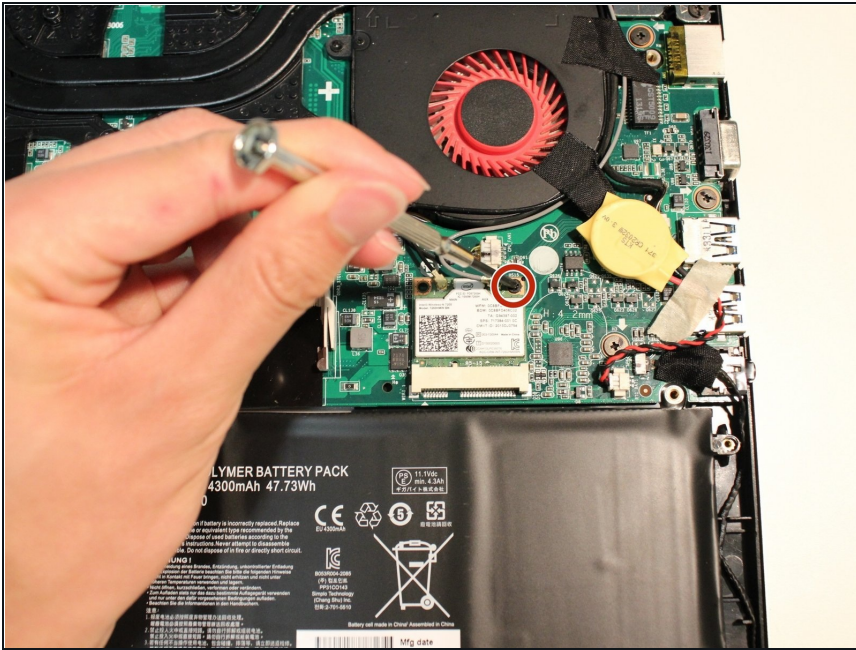
## Step 1 — Wireless Card



- Remove all 15 marked screws on the underside of the laptop using a #0 screwdriver.
- ① There are three different sized screws.
  - x1 9.8mm Screw
  - x8 5.6mm Screws
  - x6 5.0mm Screws
- ☑ Divide the screws by size and save them in a safe space for reassembly later.



## Step 2



- Remove the screw attaching the wireless card to the motherboard.
- ☑ Save the screw in a safe place for reassembly later.

## Step 3



- Remove the black and grey wires that are connected to the wireless card by pulling away from the card.

## Step 4



- Carefully pull the wireless card out.

To reassemble your device, follow these instructions in reverse order.