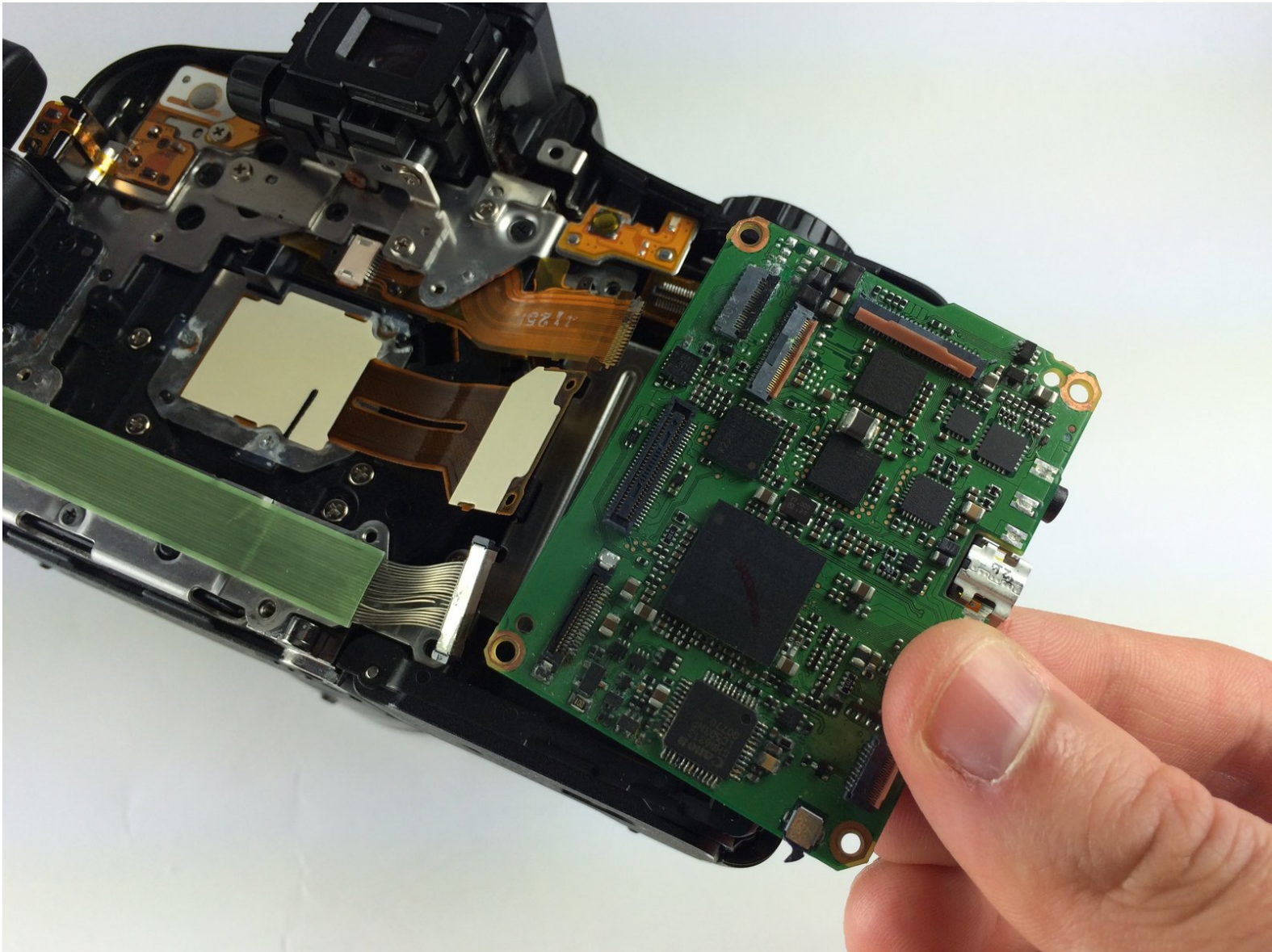




Canon PowerShot SX50 HS Motherboard Replacement

This guide will show you how to remove and replace the motherboard.

Written By: Remington Goodwin



INTRODUCTION

Replace the motherboard of the Canon PowerShot SX50 HS.



TOOLS:

- [Phillips #000 Screwdriver](#) (1)
 - [Tweezers](#) (1)
 - [iFixit Opening Tools](#) (1)
-

Step 1 — Battery



- Locate the battery compartment on the bottom of the camera.
- Push the latch on the outside of the battery door to the right to get to the battery pack inside.

Step 2



- Pull the brown latch on the inside of the battery door towards your palm (to the left). The battery pack should pop out (battery not pictured).
- Now remove the battery pack from the camera with your fingers.

Step 3 — Rear Case



- Remove the two Phillips #000 screws, length 5 mm, on either side of the viewfinder.
- Remove the one Phillips #000 screw, length 4 mm, on the bottom, closer to the back side of the camera.

Step 4



- Remove the two Phillips #000 screws, length 3 mm, on the left side of camera.
- Remove the Phillips #000 screw, length 4 mm, located between the two 3 mm screws.
- Remove the two Phillips #000 screws, length 4 mm, on the bottom left corner of the camera.

Step 5



- Find the "A/V Out Digital" charging station and lift up the flap.
- Remove the two Phillips #000 screws, length 5 mm, that are under the "A/V Out Digital" flap.
- Remove the one Phillips #000 screw, length 5 mm, that is outside the "A/V Out Digital" flap.

Step 6



- Use the plastic opening tool to carefully start lifting up the camera's left-side panel. Then use your fingers to pry off the rest.

Step 7



- Make sure the LCD screen panel, the battery compartment door, and the 'A/V Out Digital' flap are all open.
- Using your fingers, carefully pry off the back encasement (you may need to use a plastic opening tool to help you).

⚠ Do not remove the back casing too far or too quickly. There is a wire ribbon attaching the back encasement to the motherboard that is very delicate.

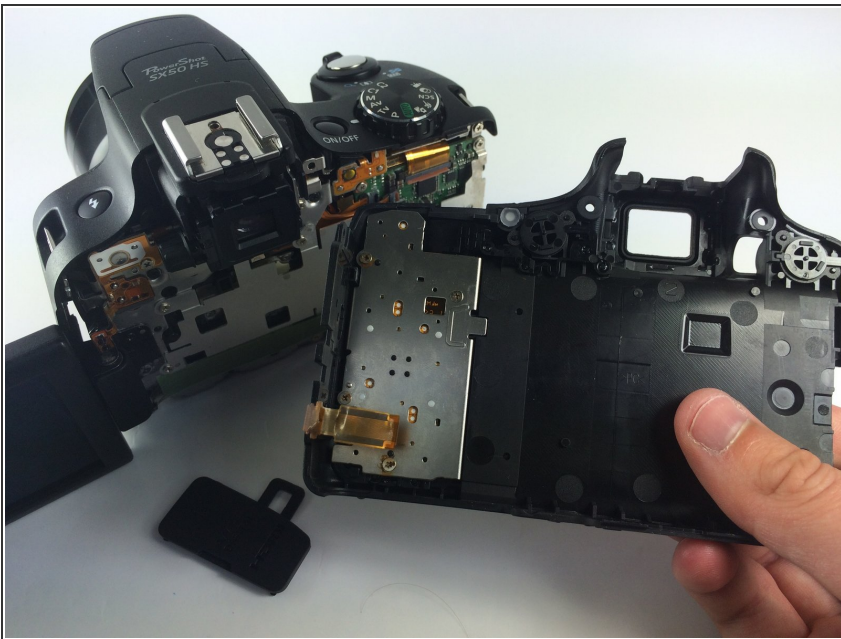
Step 8



- Find the orange wire ribbon attaching the back encasement to the I/O board in the lower right-hand corner of the camera (lens facing away).
- Carefully lift up the brown clip holding the wire ribbon in place and pull the ribbon out of the clasp with your fingers or tweezers.

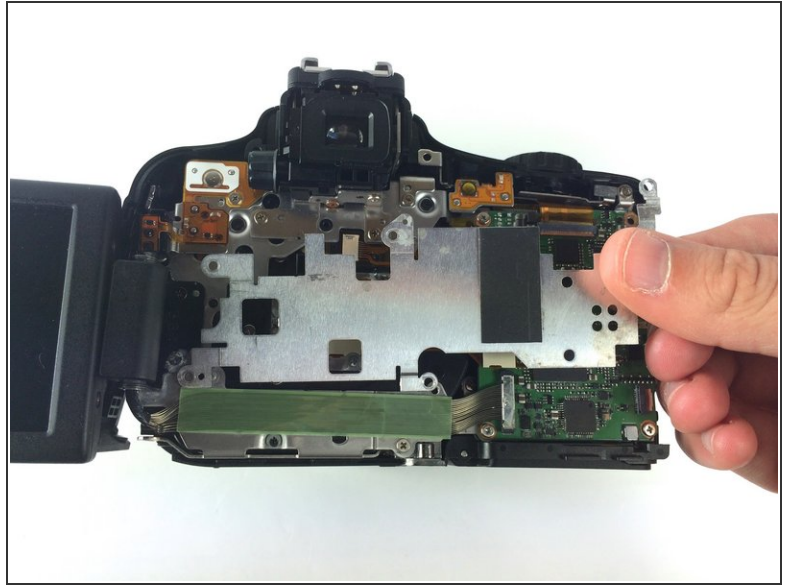
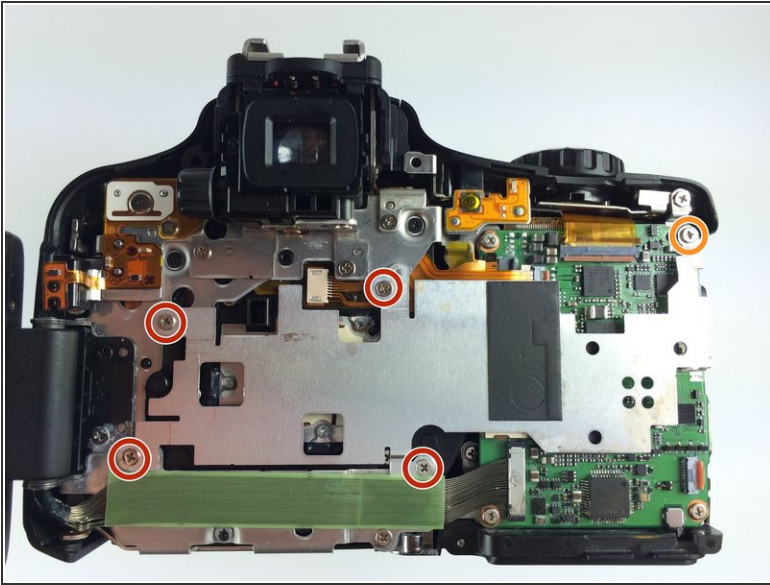
⚠ Be cautious when removing the wire ribbon; it is very delicate.

Step 9



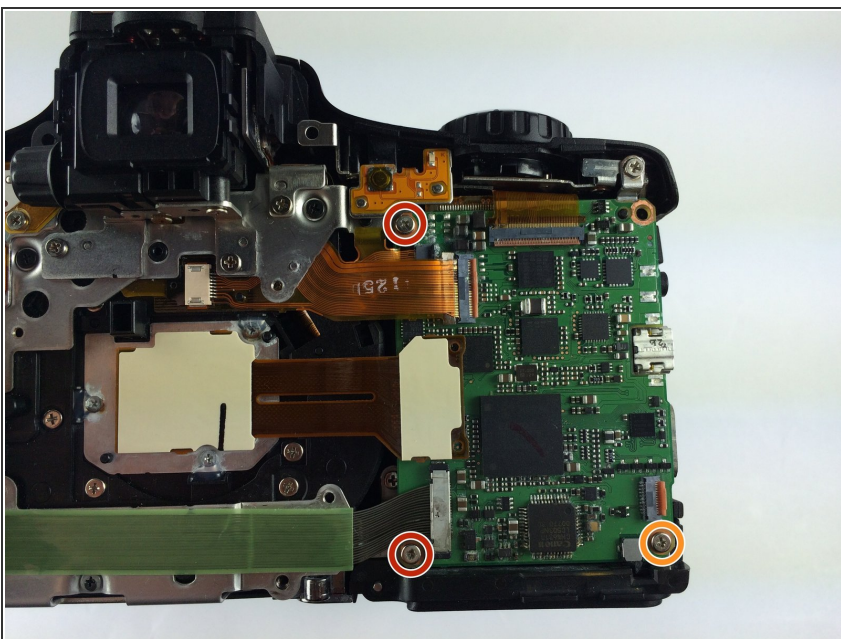
- Now you can completely separate the back encasement from the rest of the camera.

Step 10 — Motherboard



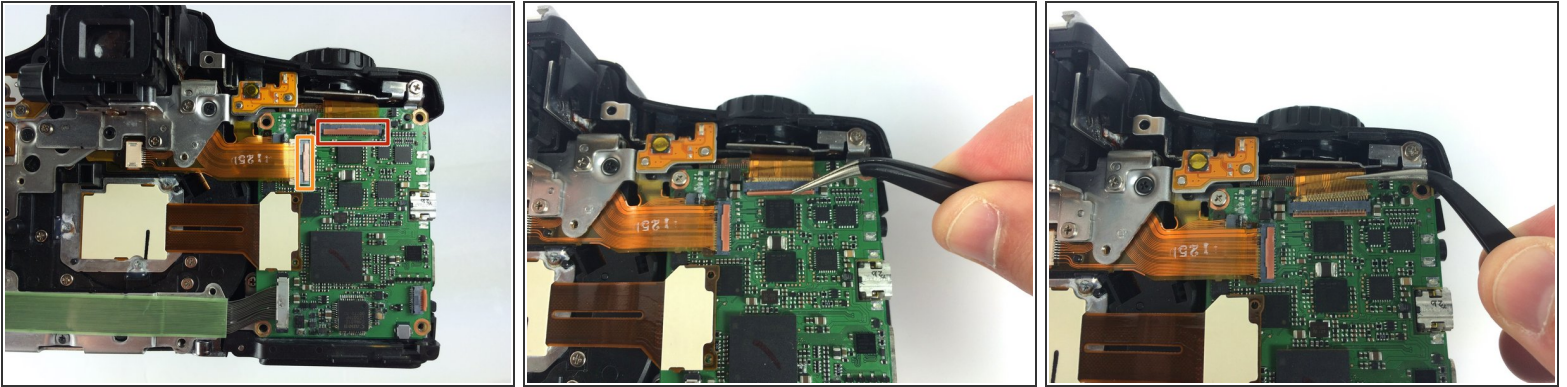
- Remove the four #000 Phillips screws, 2 mm in length, from the metal plate.
- Remove the one #000 Phillips screw, 5 mm in length, from the metal plate.
- Lift the metal plate off with your fingers.

Step 11



- Remove the two Phillips #000 screws, 5 mm in length, from the I/O board.
- Remove the one Phillips #000 screw, 3 mm in length, from the I/O board.

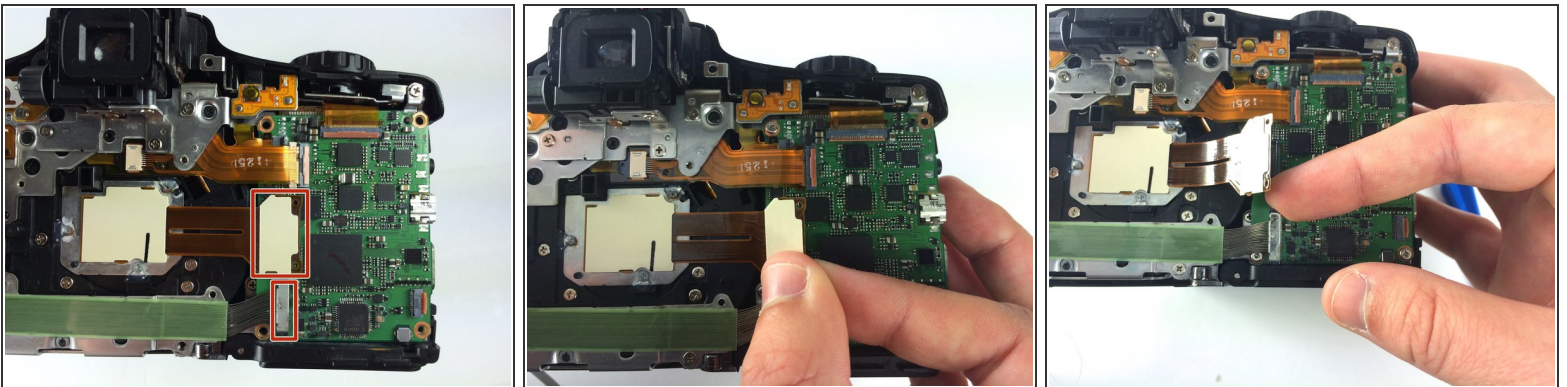
Step 12



- To remove the topmost wire ribbon on the I/O board, lift up the brown latch, and then carefully pull out the ribbon. You can use your fingers or the tweezers.
- Remove the wire ribbon on the top left corner of the I/O board with the same process as the previous step.

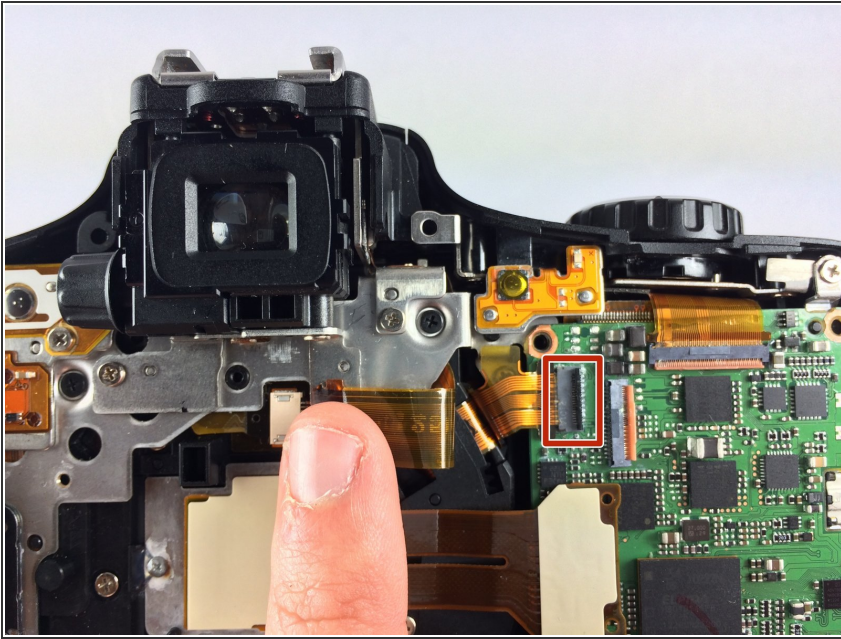
⚠ Be careful when removing wire ribbons; they are very delicate.

Step 13



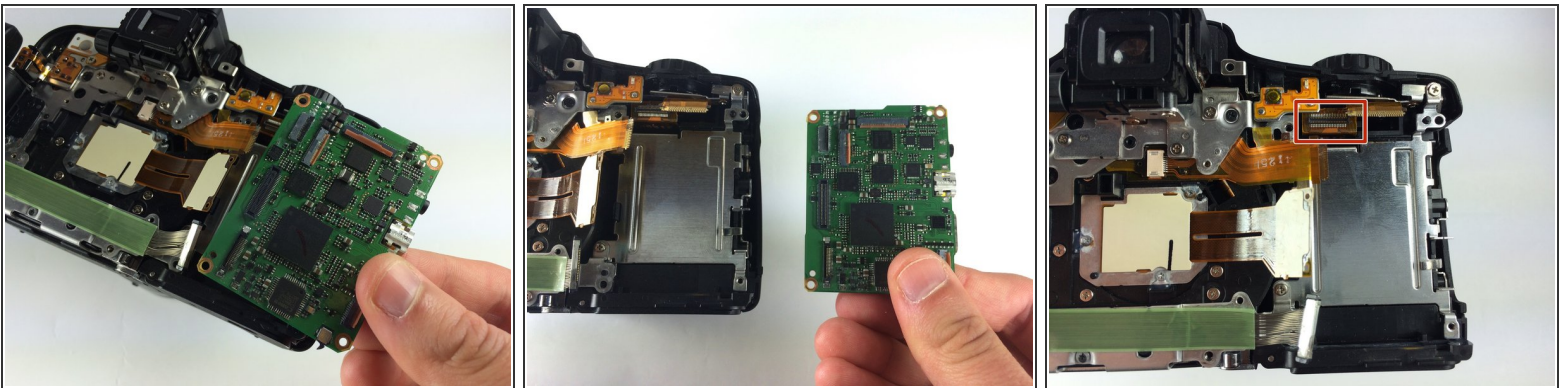
- Remove the two wire ribbons on the bottom left corner of the I/O board by unclipping them with your fingers.

Step 14



- Lift up the wire ribbon that was attached at the top left corner of the I/O board; there is another wire ribbon underneath it.
- Detach this ribbon by lifting up the black latch and pulling it out with your fingers or the tweezers as you did with the ribbon on top of it.

Step 15



- Carefully remove the I/O board from the the camera. There is a wire ribbon attached underneath it that will detach as you pull the I/O board out.
 - This is the detached wire ribbon. You will need to reattach this when reassembling the camera.
- ⚠ Be very cautious when removing the I/O board; the wire ribbon underneath is very delicate.

To reassemble your device, follow these instructions in reverse order.