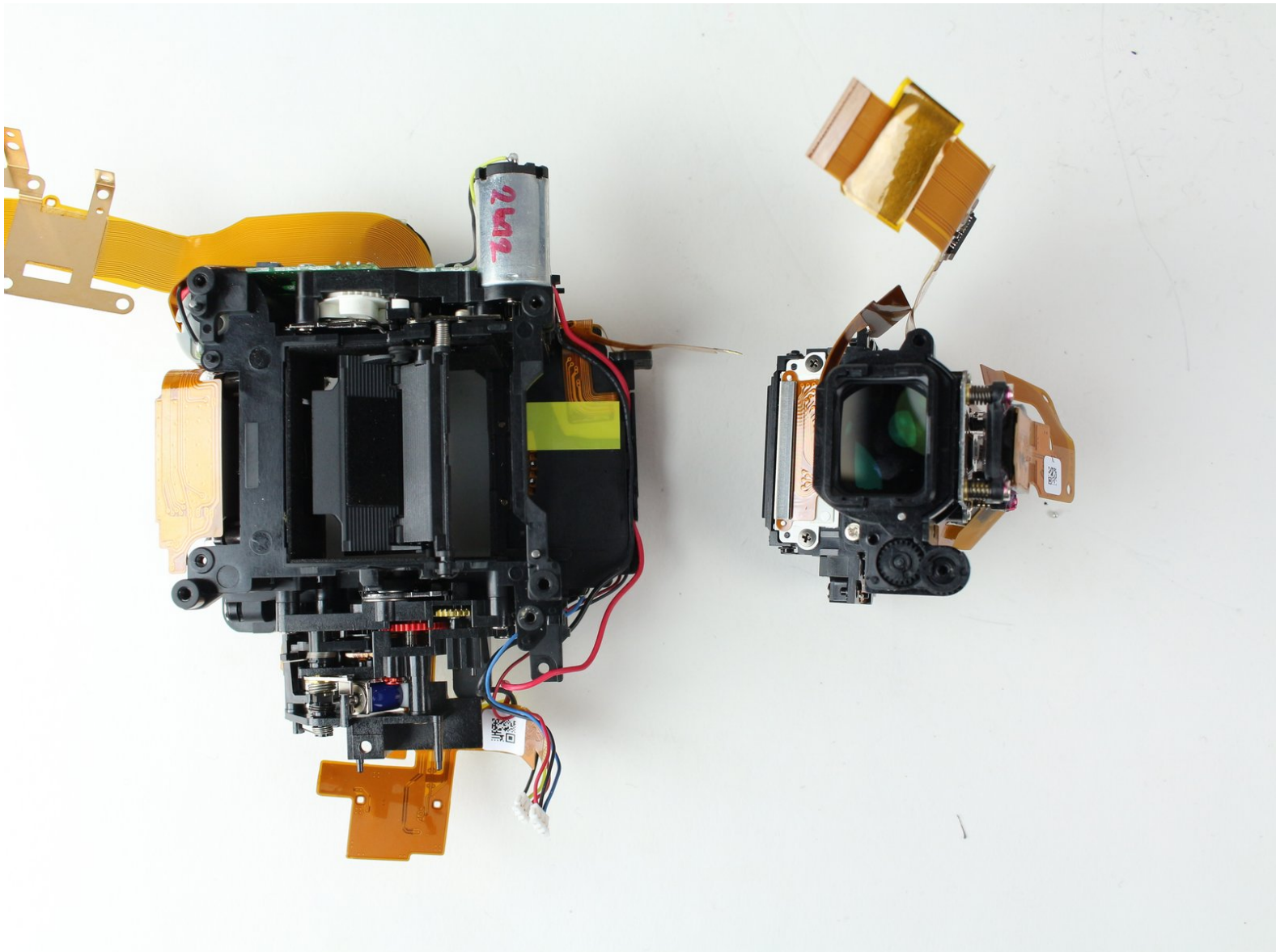




Nikon D7000 Mirror Box & Viewfinder Replacement

This guide will help you replace the mirror box and viewfinder in the Nikon D7000.

Written By: Thomas Willson



INTRODUCTION

Use this guide to replace the mirror box and viewfinder.

TOOLS:

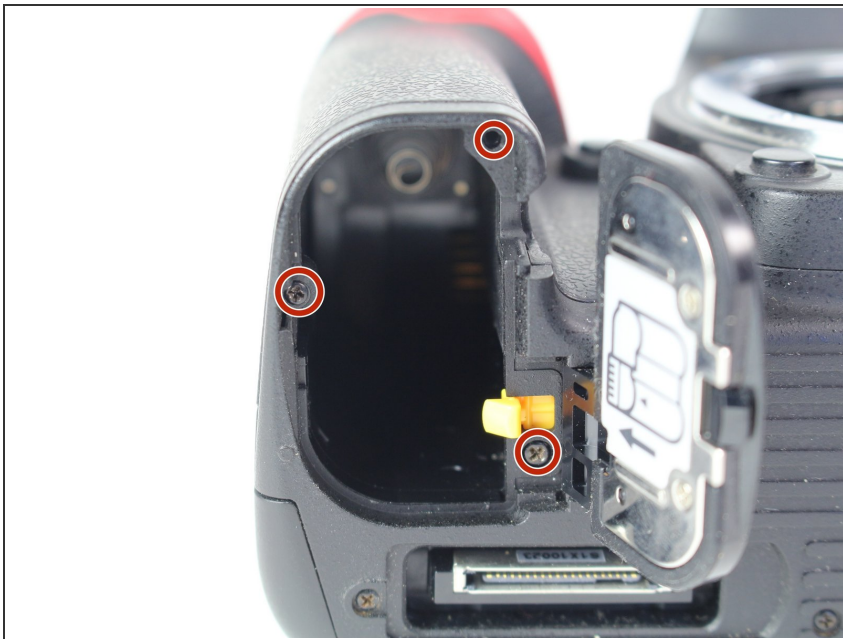
- [Metal Spudger](#) (1)
 - [Phillips #0 Screwdriver](#) (1)
 - [Spudger](#) (1)
 - [Tweezers](#) (1)
 - [Soldering Workstation](#) (1)
-

Step 1 — Motherboard



- Remove the following 5 screws securing the bottom cover to the camera body:
 - Four 6 mm J000 screws.
 - One 8 mm J000 screw (under lens mount).

Step 2



- Remove three 6 mm J000 screws from under the battery cover.

Step 3



- Gently pull the bottom cover off of the camera body.

Step 4



- Remove the following screws from the port area:
 - Two 3.5 mm J000 screws.
 - One 6 mm J000 screw (right above ports).

Step 5



- Peel the rear rubber piece off with tweezers.

Step 6



- Remove one 4.25 mm J000 screw from behind the rear rubber piece.

Step 7



- Pull the eyepiece cover up to remove it.

Step 8



- Remove two 6 mm J000 screws from behind the eyepiece cover.
- ⓘ On D7100 models, there is an additional screw holding the back plate on. This screw is located in the diopter (dial with + - on it). This screw can be accessed by peeling up this sticker on the diopter.

Step 9



- Open the SD card cover by pushing slightly down with your thumb and sliding up.

Step 10



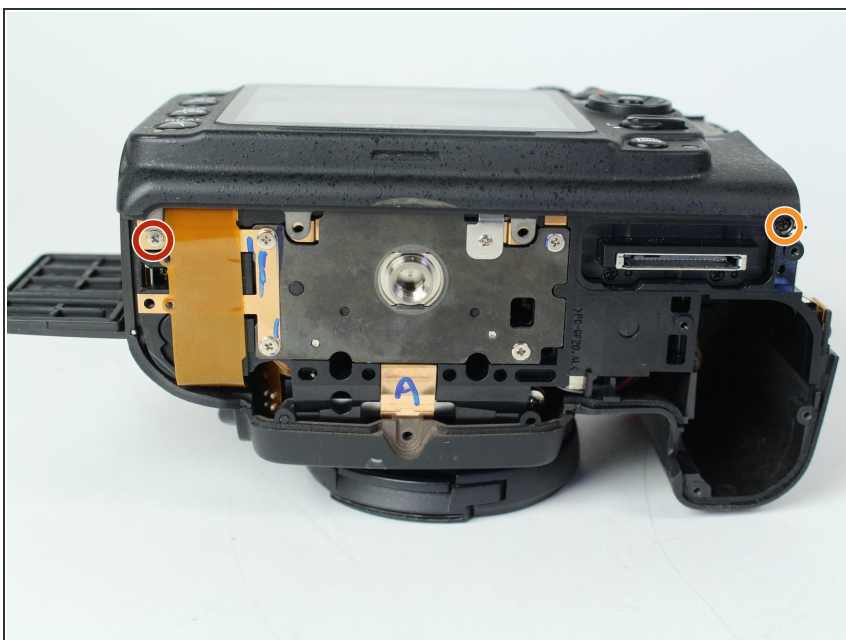
- Remove four 6 mm J000 screws that secure the SD card cover.

Step 11



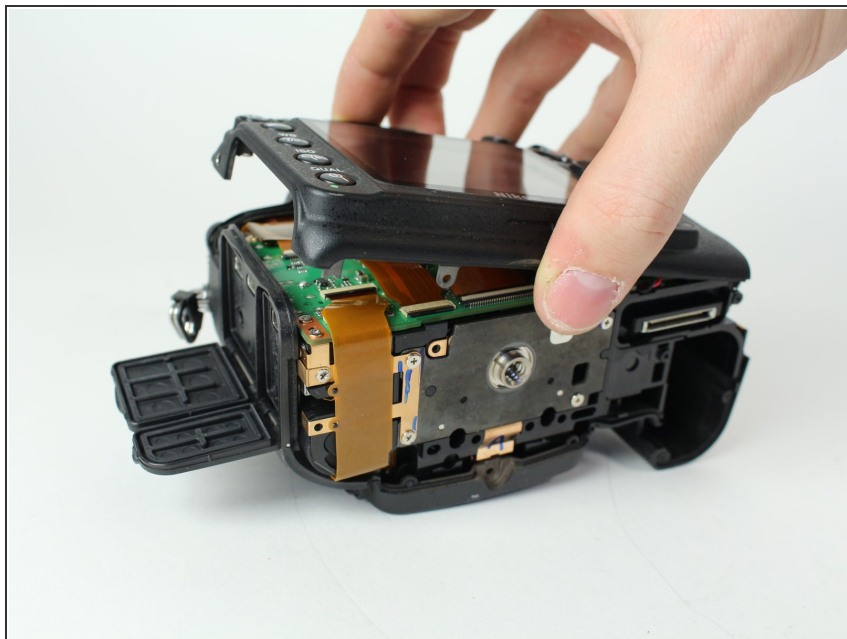
- Gently pull the SD card cover off.

Step 12



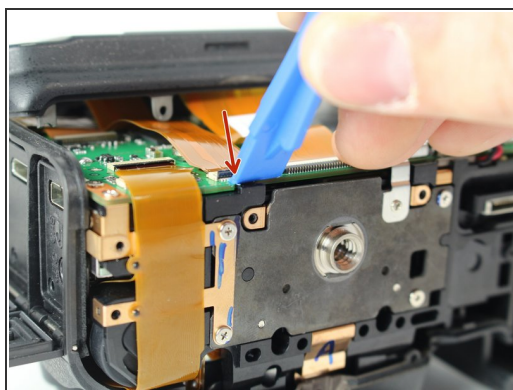
- Remove the following screws that secure the back case:
 - One 6 mm J000 screw.
 - One 3 mm J000 screw.


Step 13



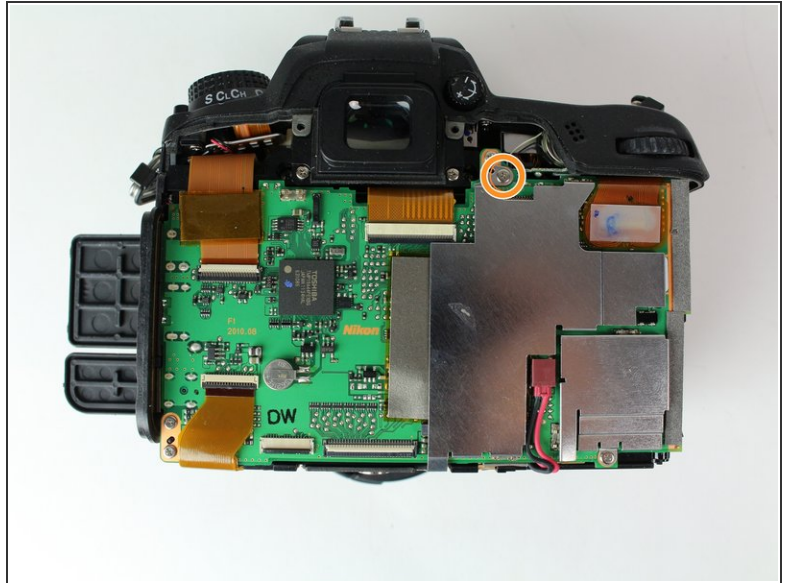
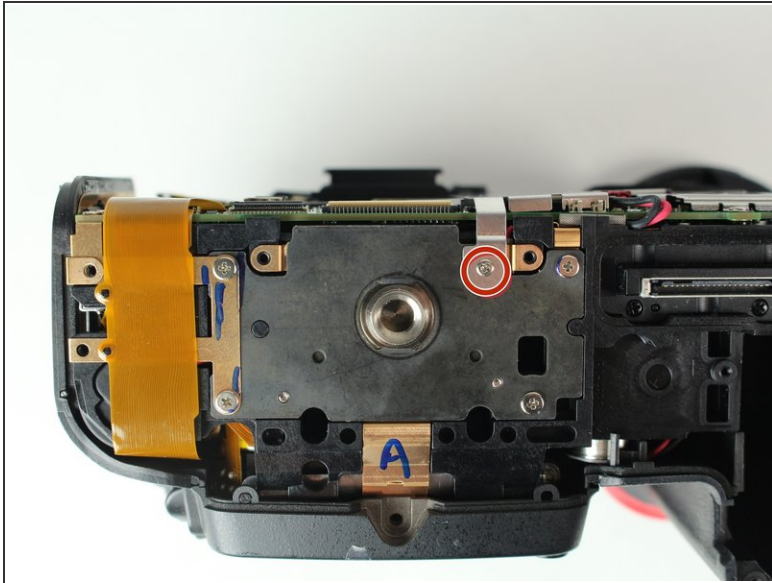
- Carefully lift the back case off.

Step 14



- Disconnect the following two ribbon cables from the motherboard.
-  See our [Cable Connector Guide](#) for help with ribbon cable connectors!

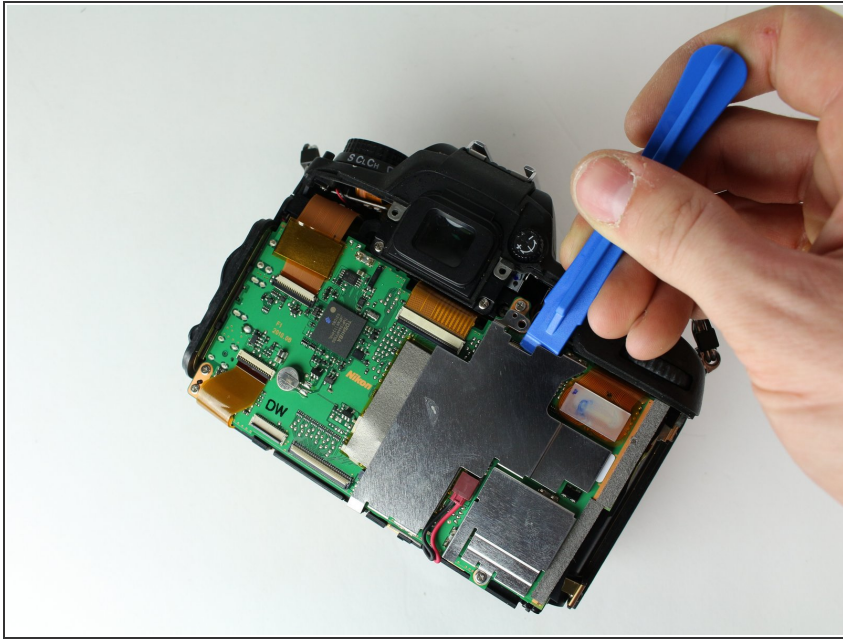
Step 15



- Remove the following screws securing the left motherboard shield:
 - One 2 mm J000 screw (on the bottom).
 - One 3.5 mm J000 screw (on the back).

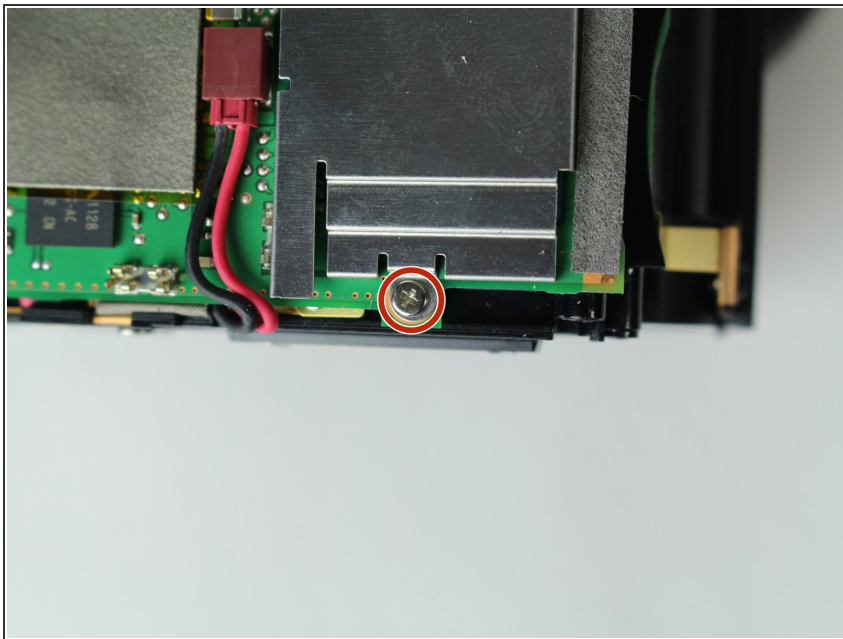
⚠ Be careful of the grounding clips on the motherboard.

Step 16



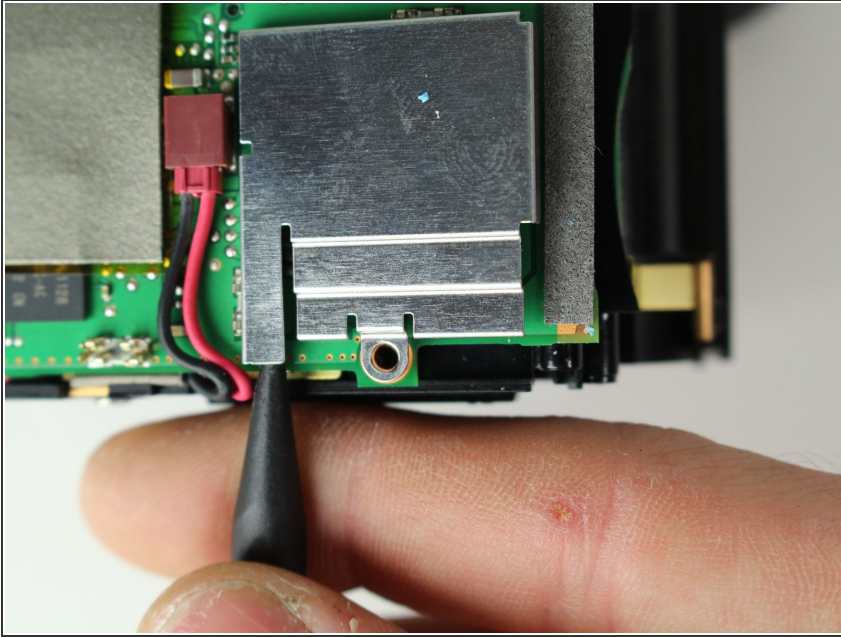
- Gently pry and lift the left motherboard shield off.

Step 17



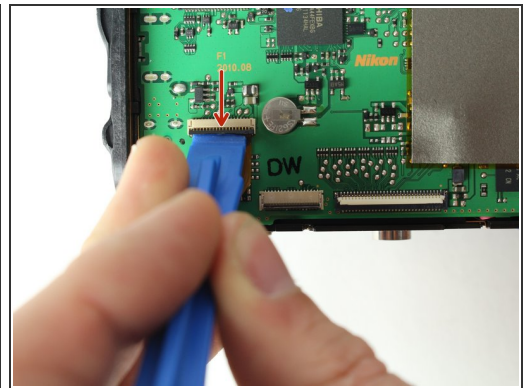
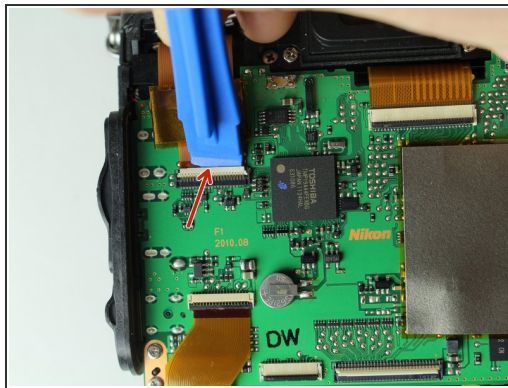
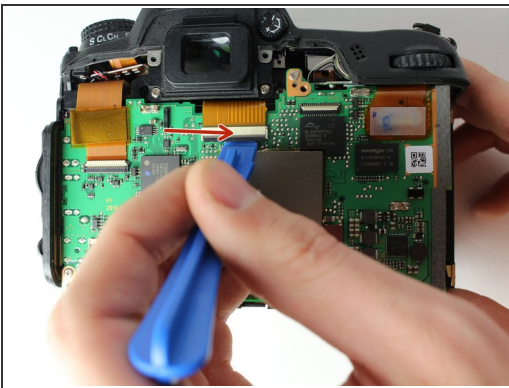
- Remove one 3.5 mm J000 screw securing the right motherboard shield.

Step 18



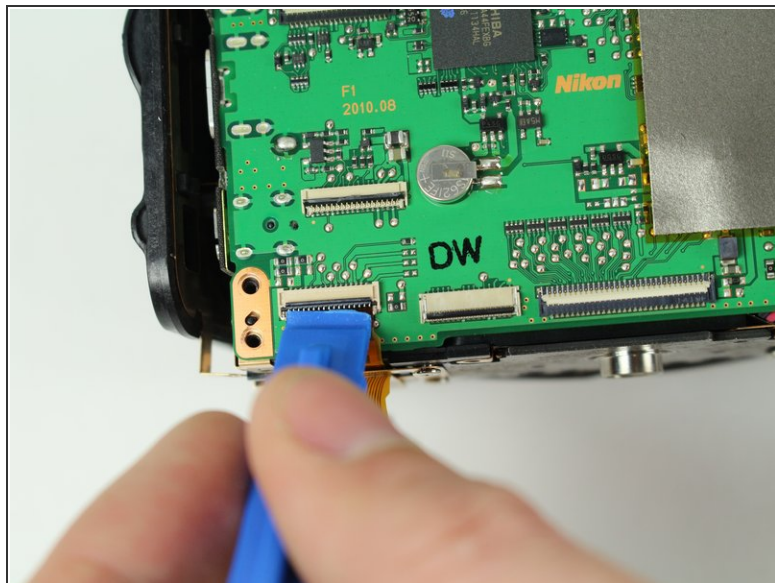
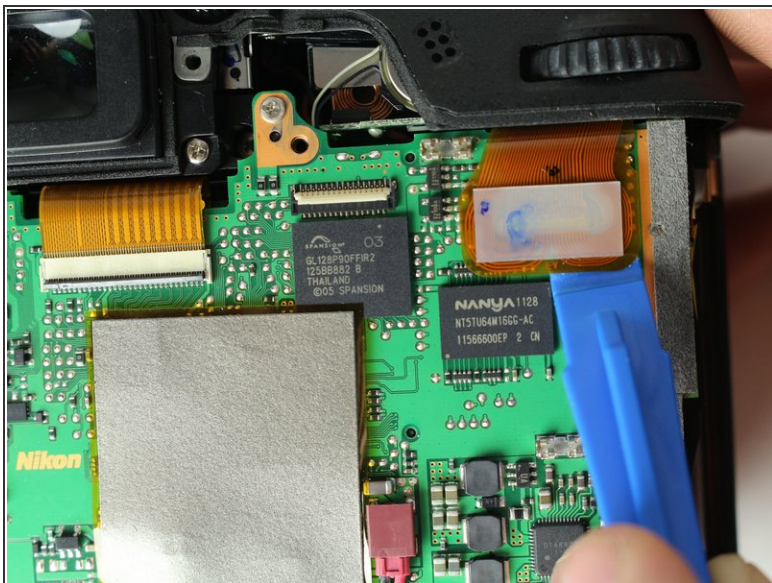
- Gently lift the right motherboard shield off with the tip of a spudger.

Step 19



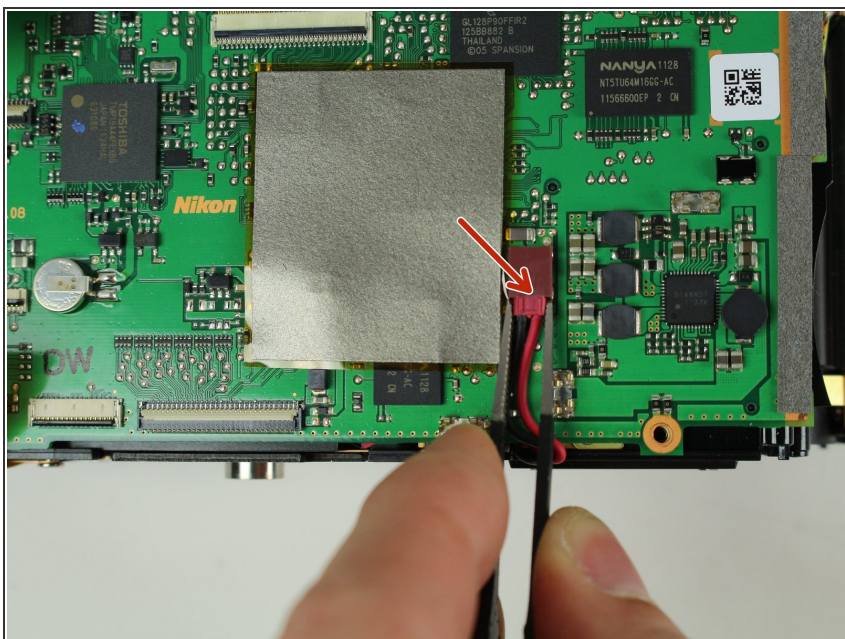
- Disconnect remaining ribbon cables.

Step 20



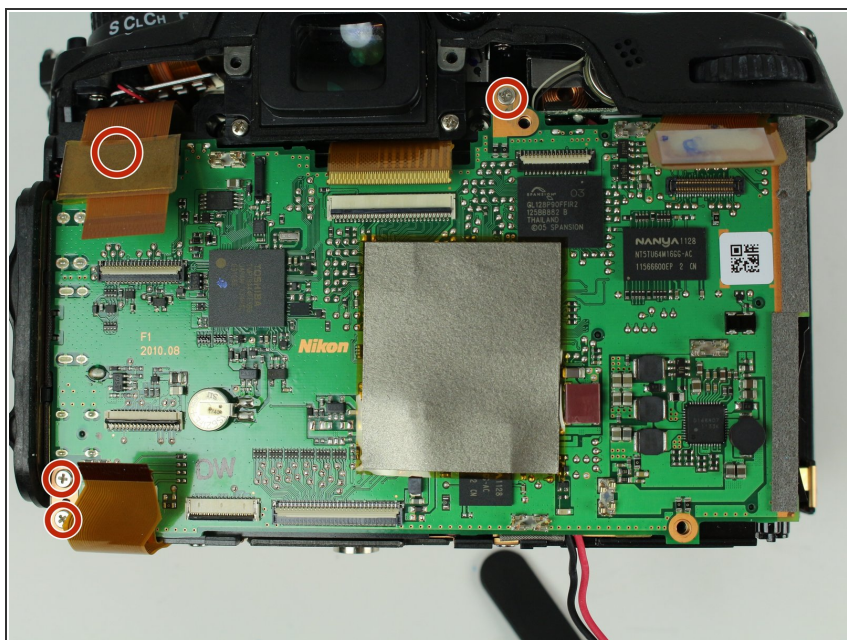
- Disconnect remaining ribbon cables.

Step 21



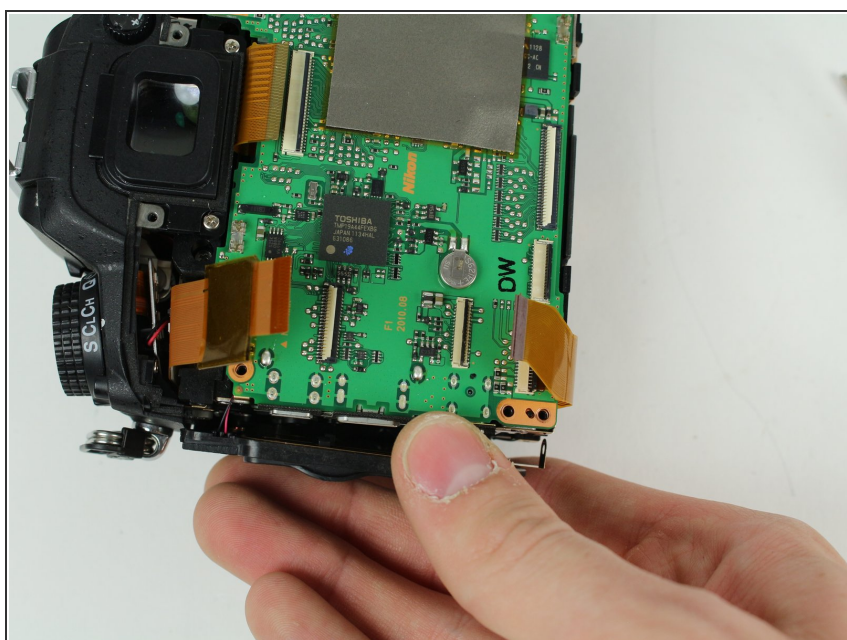
- Carefully disconnect the red connector with tweezers.

Step 22



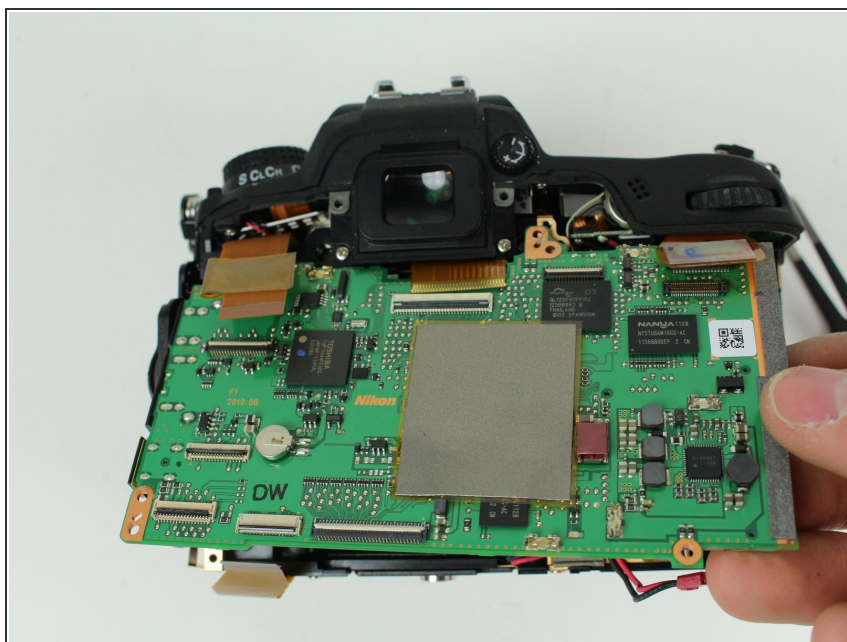
- Remove four 3.5 mm J000 screws securing the motherboard.

Step 23



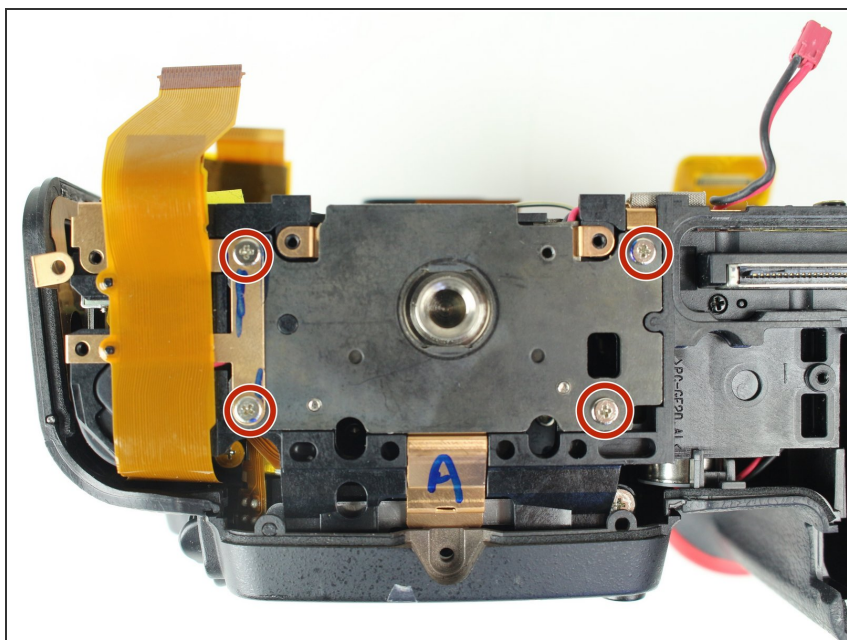
- Gently pull the port side cover away from the motherboard.

Step 24



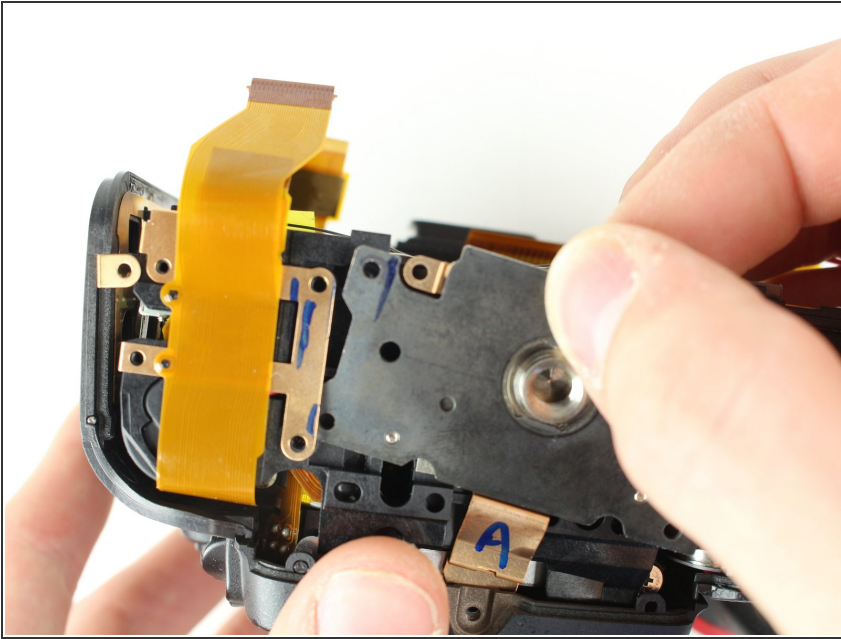
- Lift the motherboard off.

Step 25 — Tripod Plate



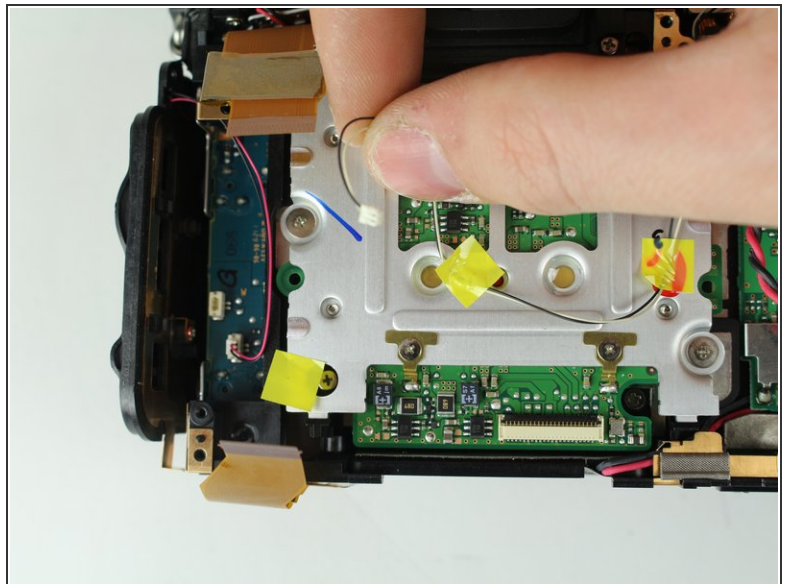
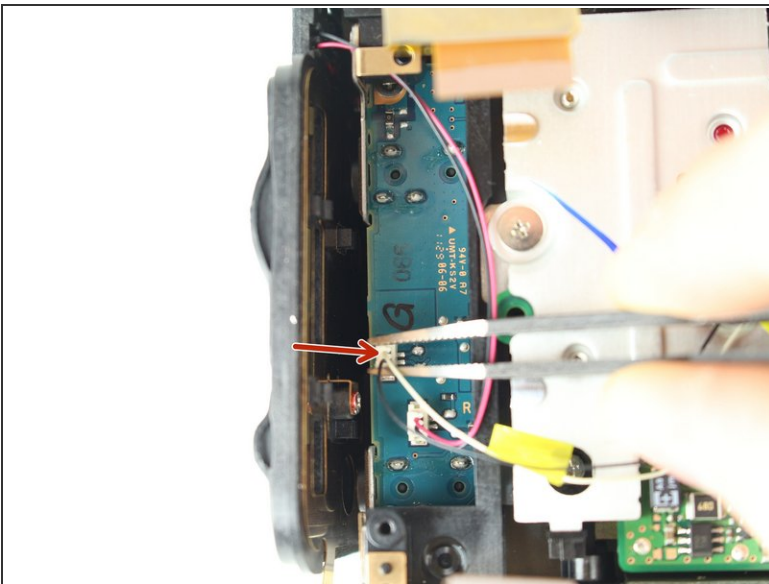
- Remove four 6 mm J000 screws securing the tripod plate.

Step 26



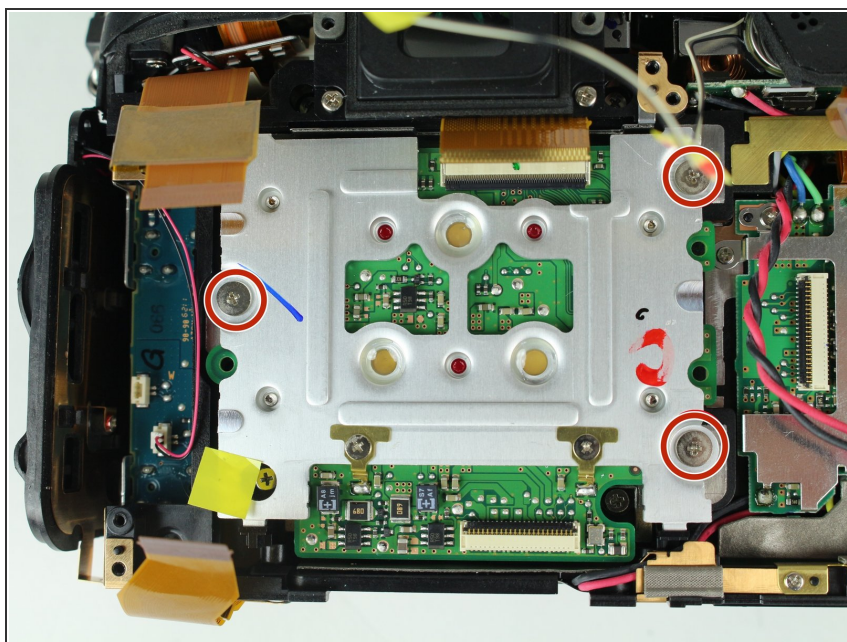
- Carefully lift the tripod plate from the backside of the camera and slide out the grounding clip from under the lens mount.

Step 27 — Image Sensor



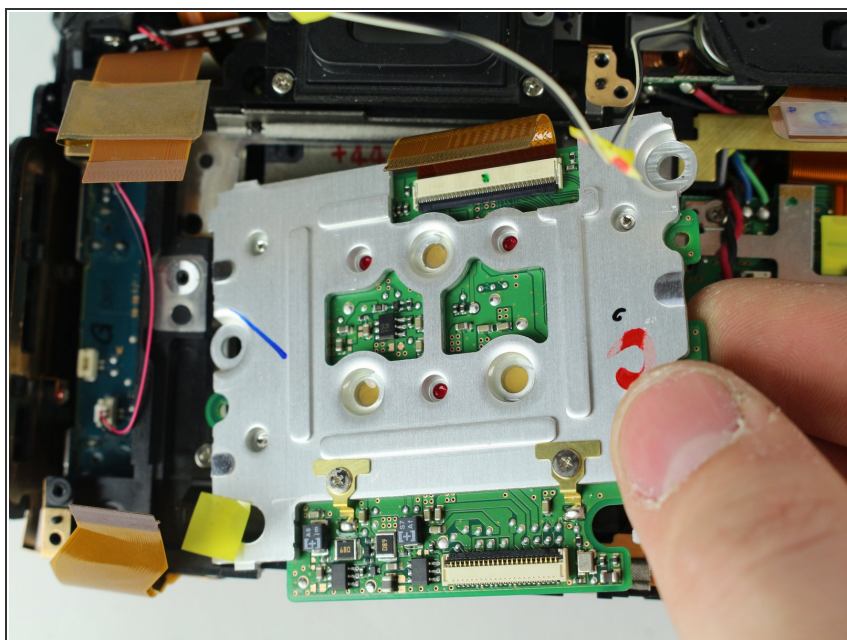
- Disconnect black and white speaker cable.

Step 28



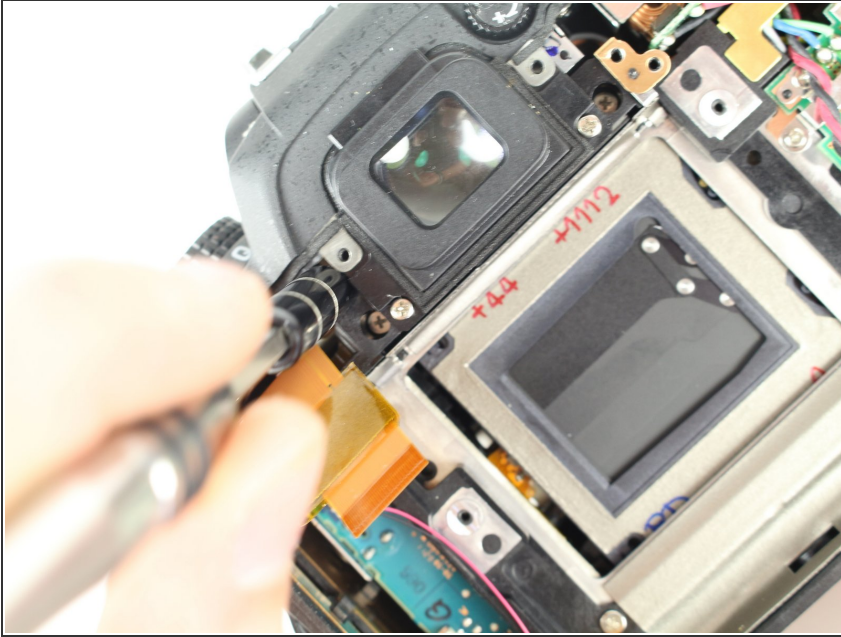
- Remove three 6 mm J000 screws securing the image sensor.

Step 29



- Carefully lift the image sensor plate out of the camera.

Step 30 — Shutter Assembly



- Manually pop up flash by inserting a screw driver to the left of the viewfinder and pressing on the metal lever.

⚠ It won't take much pressure. Press carefully and the flash will pop up when you find the right spot.

Step 31



- Remove two 5 mm J000 screws from under the flash.

Step 32



- Remove two 3 mm J000 screws securing the front cover.

Step 33



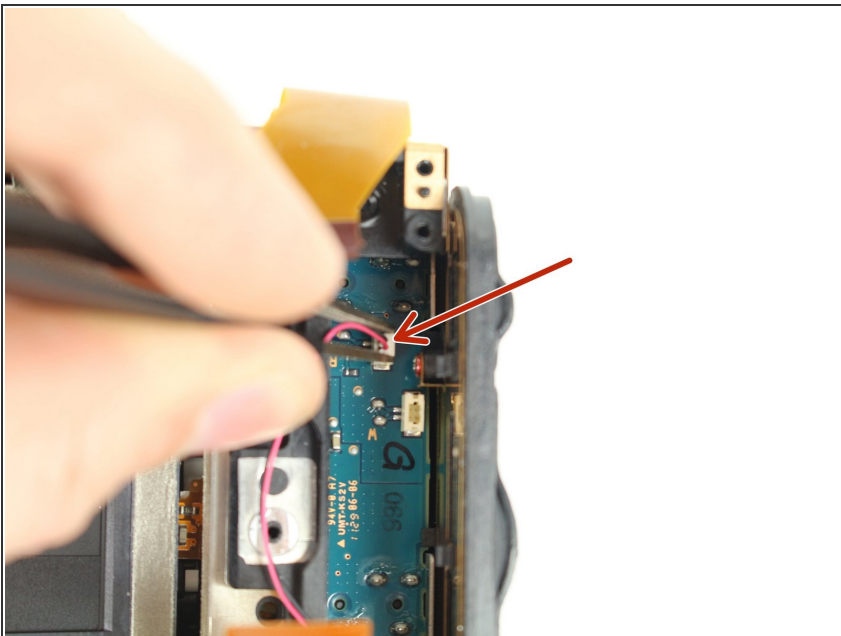
- Remove the front cover.

Step 34



- Carefully remove the port cover.

Step 35



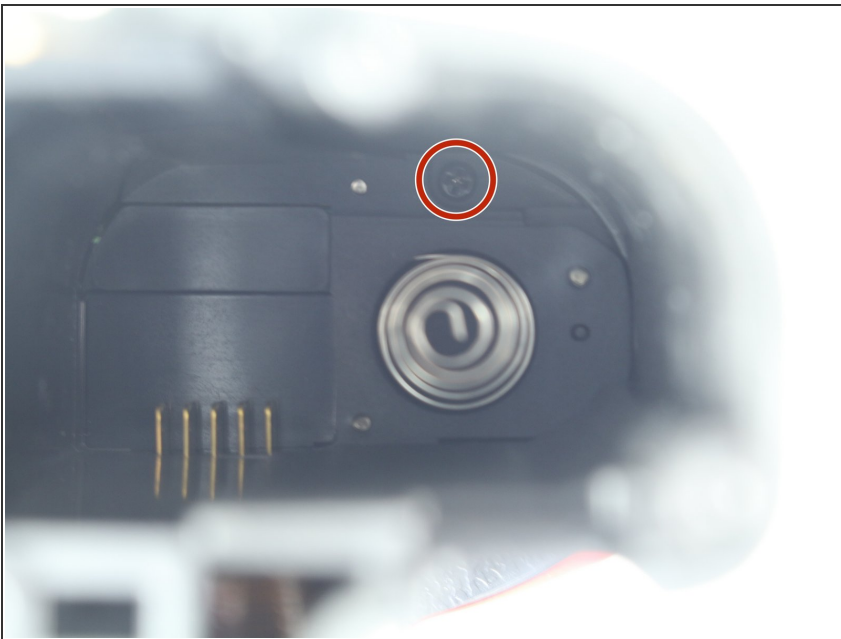
- Deroute the microphone cable.

Step 36



- Remove one 4 mm J000 screw from the front.

Step 37



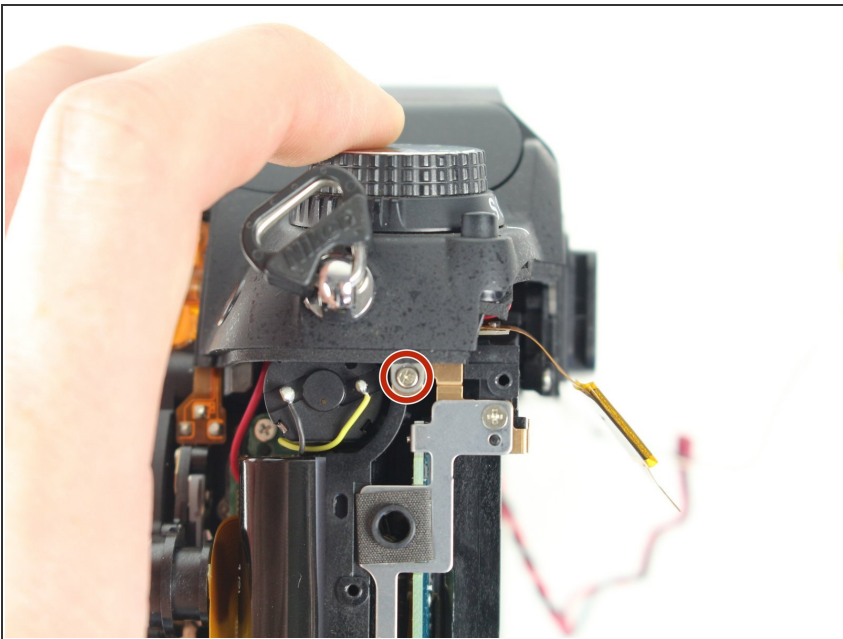
- Remove one 8.5 mm J000 screw from the battery compartment.

Step 38



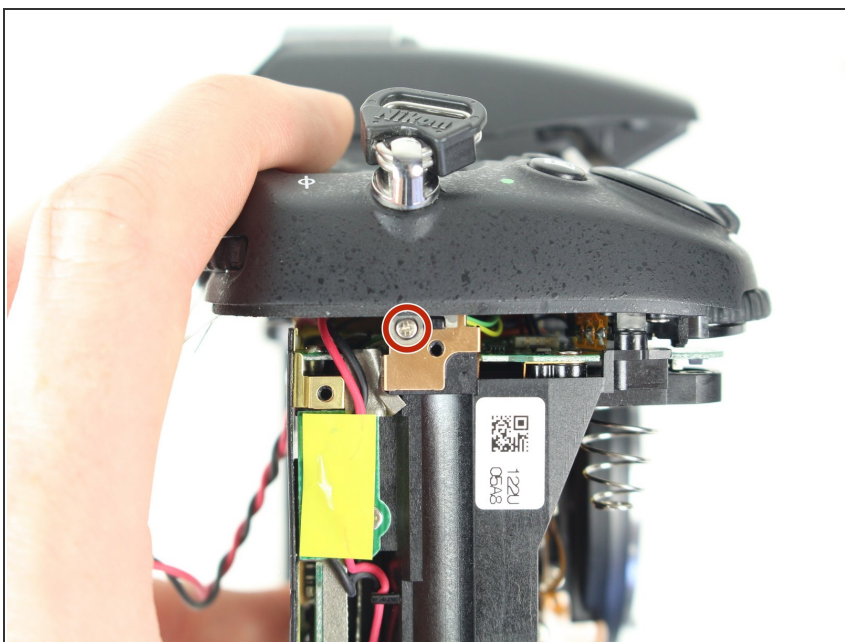
- Remove the grip carefully.

Step 39



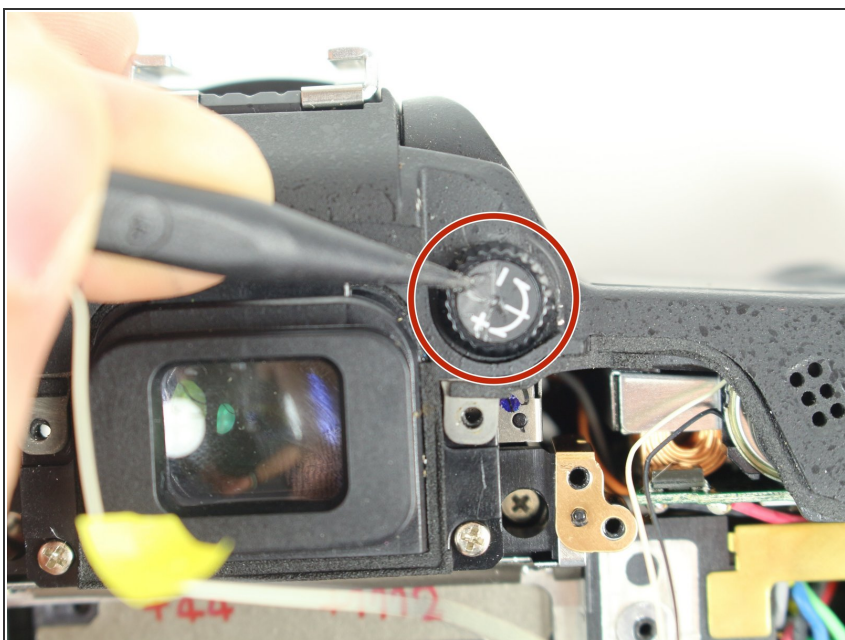
- Remove one 4 mm J000 screw securing the top case (under right strap hook).

Step 40



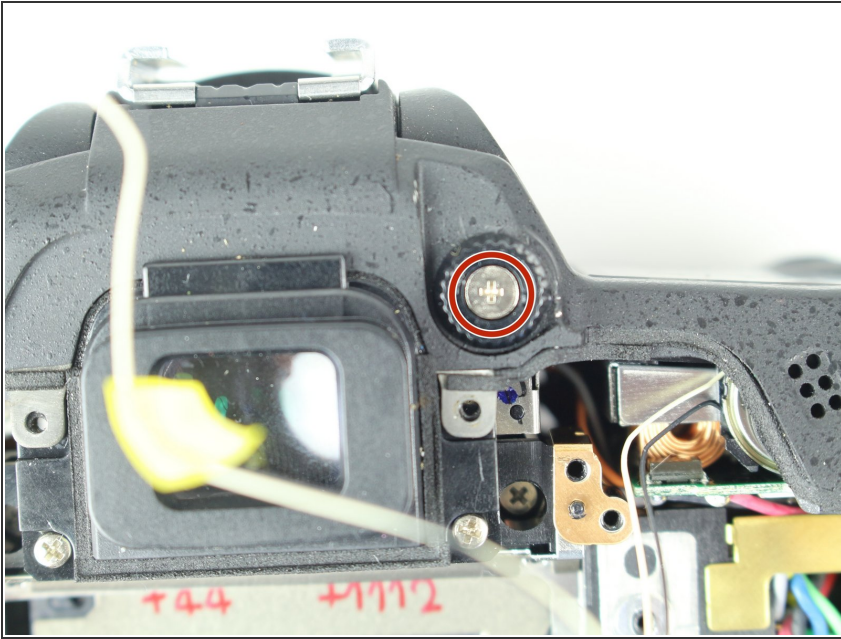
- Remove one 4 mm J000 screw securing the top case (under left strap hook).

Step 41



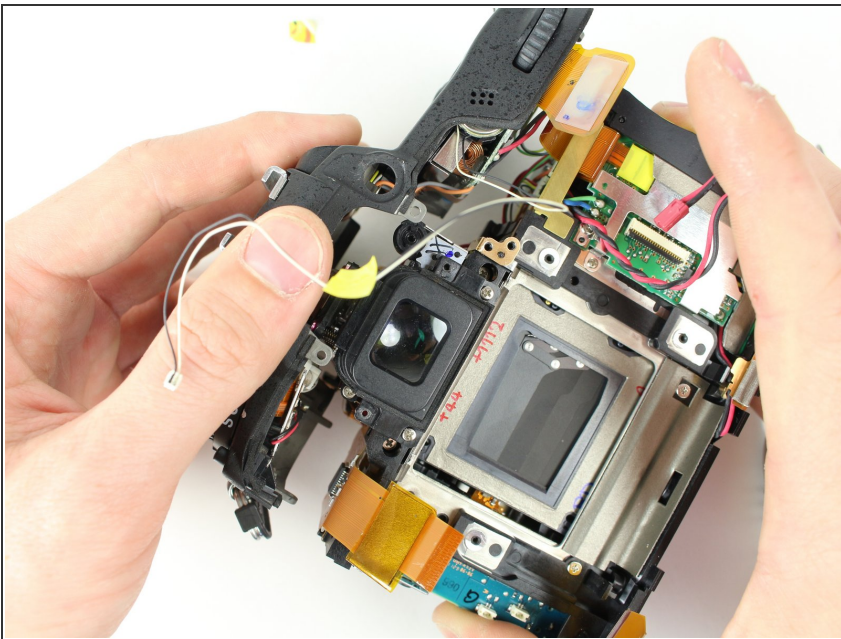
- Remove the sticker covering the diopter adjust screw.

Step 42



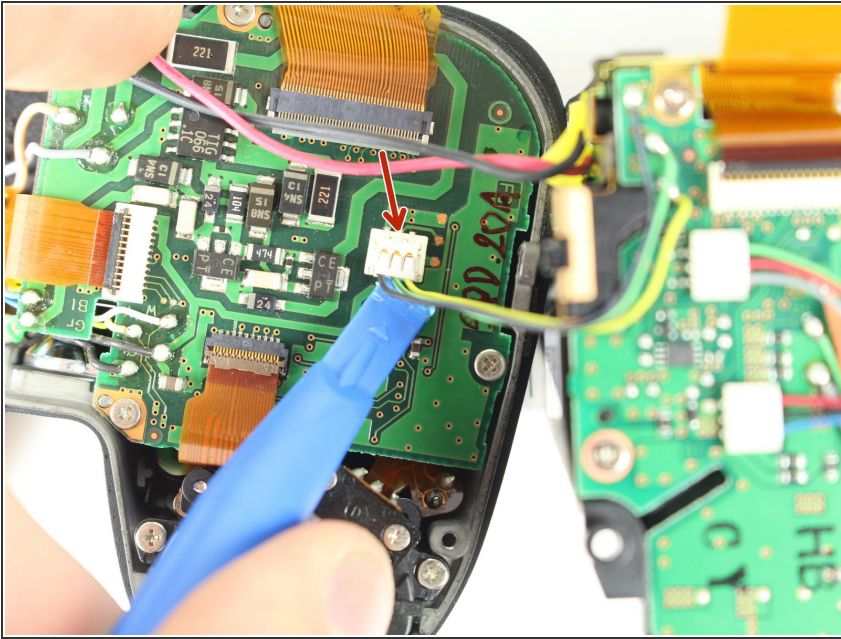
- Remove one 8.0 mm J000 screw.
- Remove the Diopeter Adjust.

Step 43



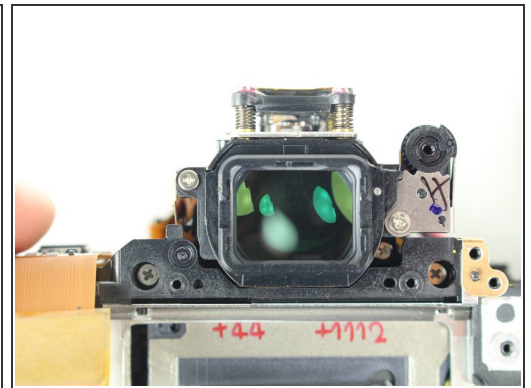
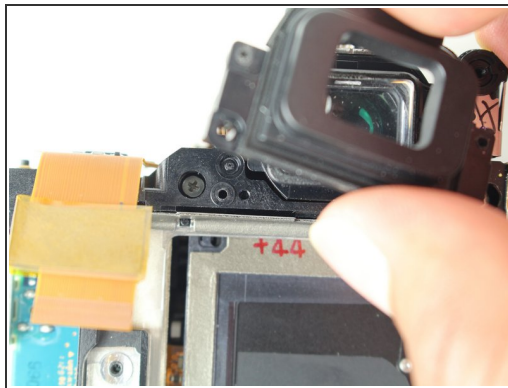
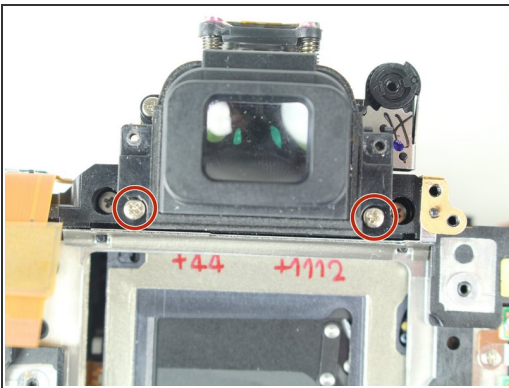
- Remove the top case.

Step 44



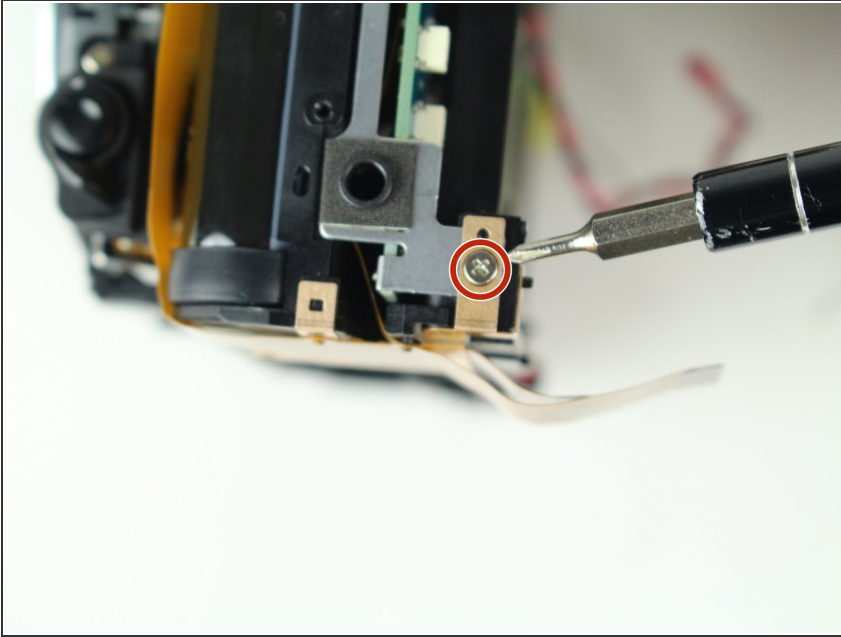
- Remove the Black, Yellow, Green cable from the top case board.

Step 45



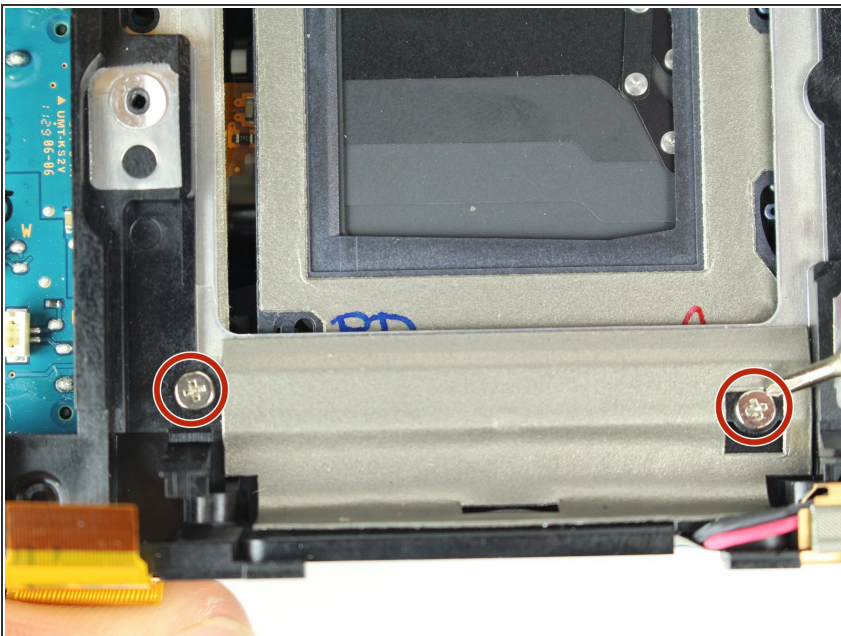
- Remove two 6.5 mm J000 screws securing the viewfinder.
- Remove the viewfinder cover.

Step 46



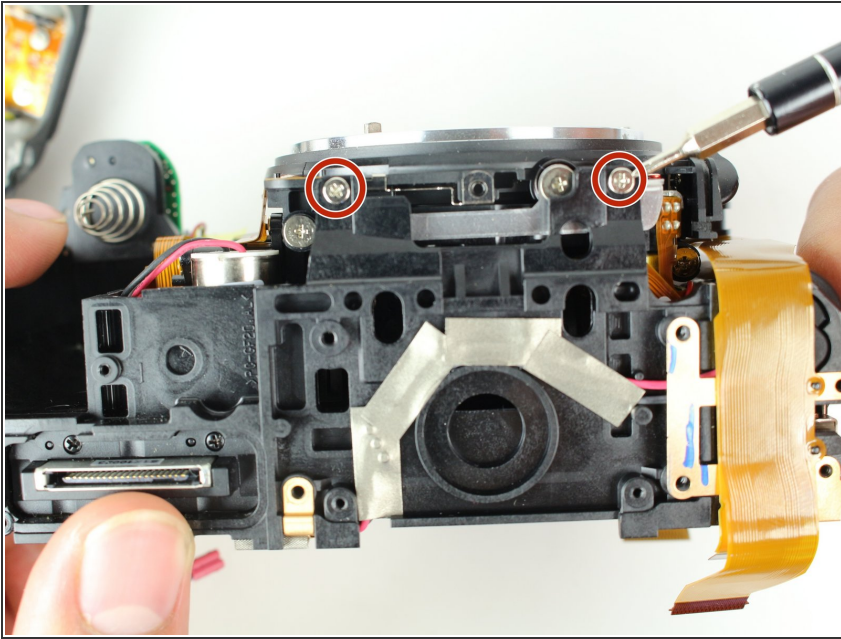
- Remove one 3 mm J000 screw from the bottom left side of the camera.

Step 47



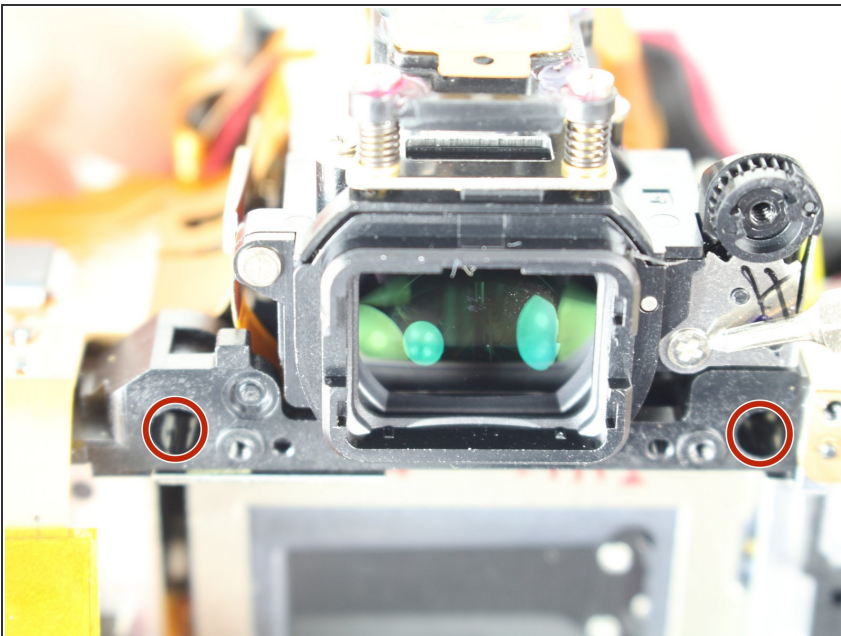
- Remove two 6 mm J000 screws from the left of the shutter.

Step 48



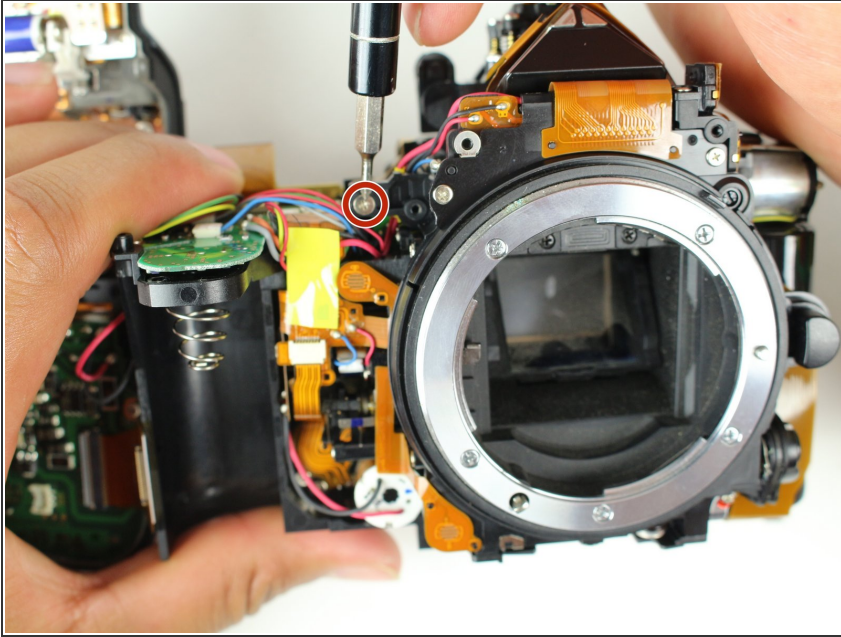
- Remove two 6.5 mm J000 screws from beneath the lens mount.

Step 49



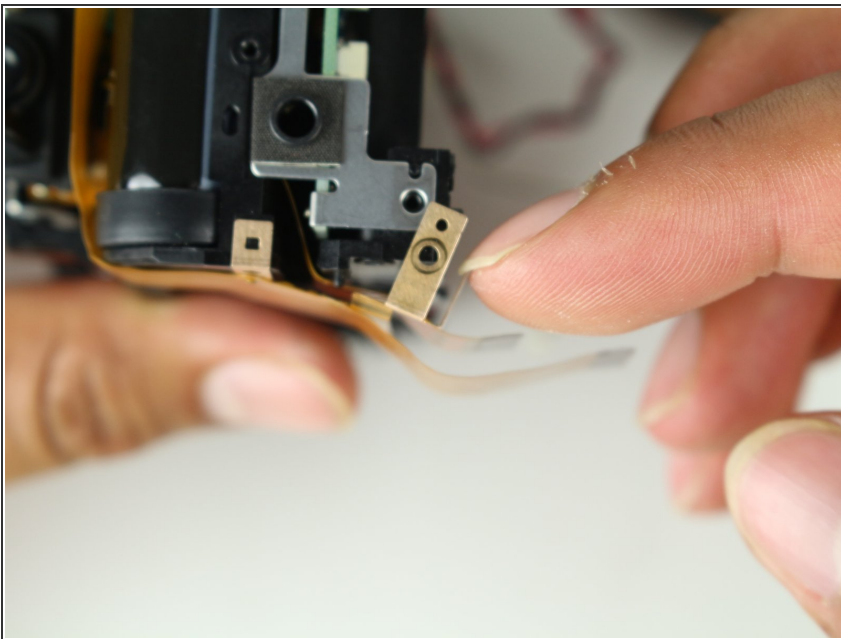
- Remove two screws from just below and to the sides of the viewfinder.

Step 50



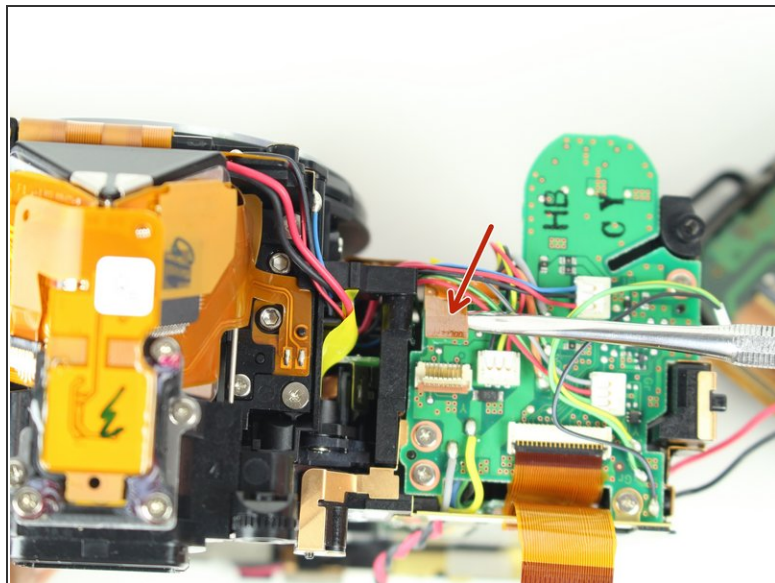
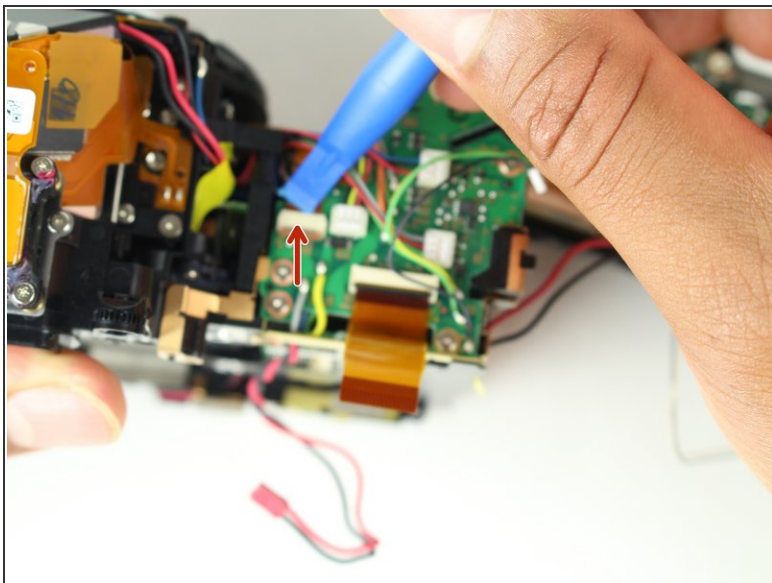
- Remove one 5 mm J000 screw from the top right of the camera.

Step 51



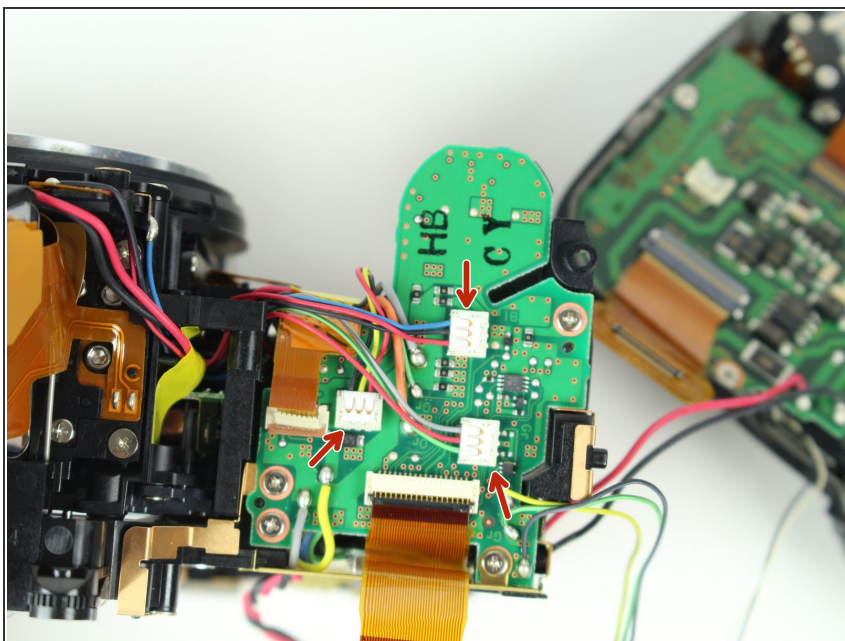
- Carefully peel back ribbon cable on the bottom left of camera.

Step 52



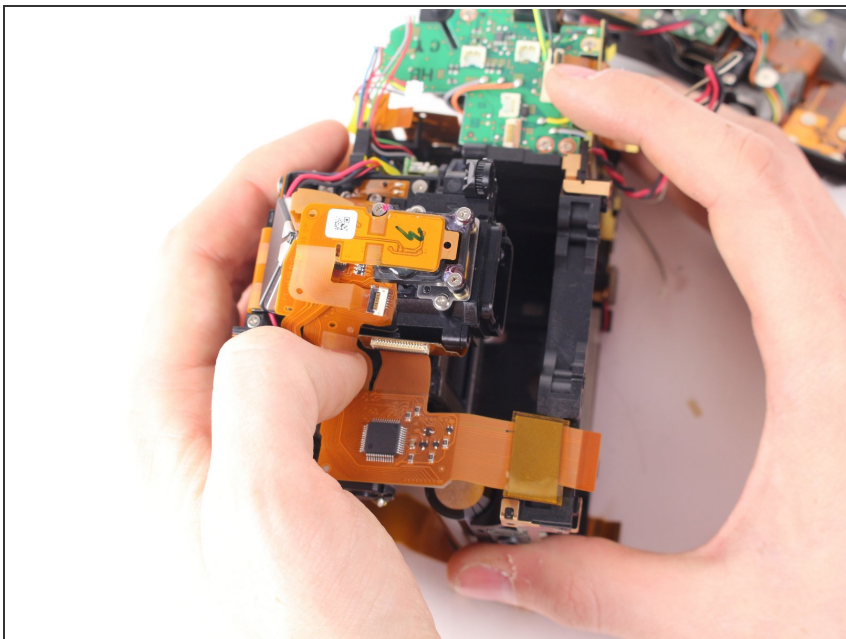
- Remove the left front ribbon cable from top right of circuit board.

Step 53



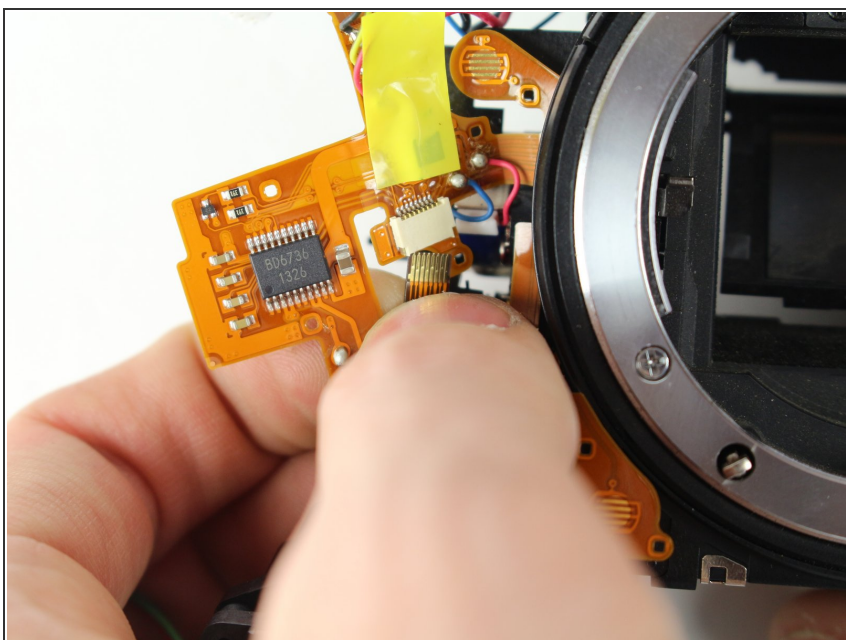
- Remove all three wire connectors.

Step 54



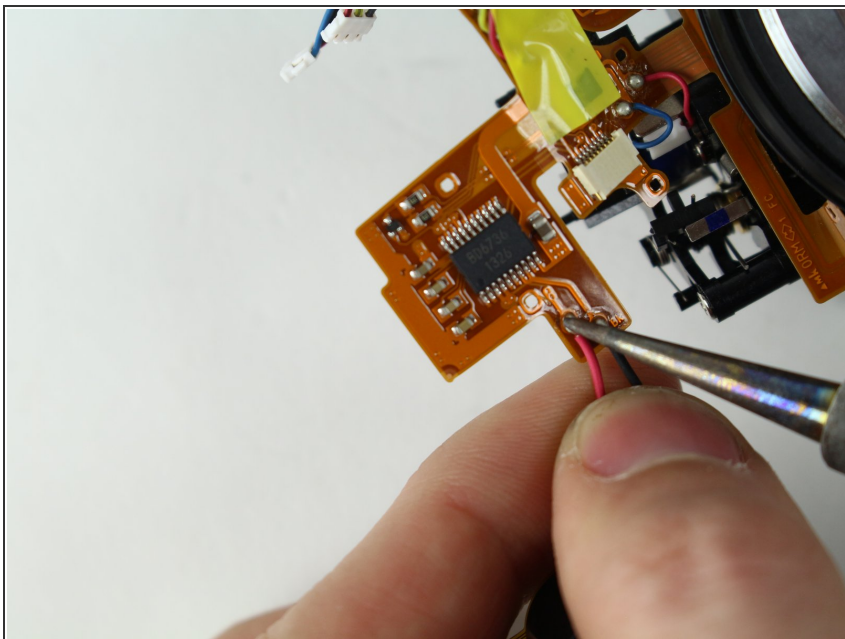
- Separate the shutter assembly from the camera body.

Step 55 — Mirror Box & Viewfinder



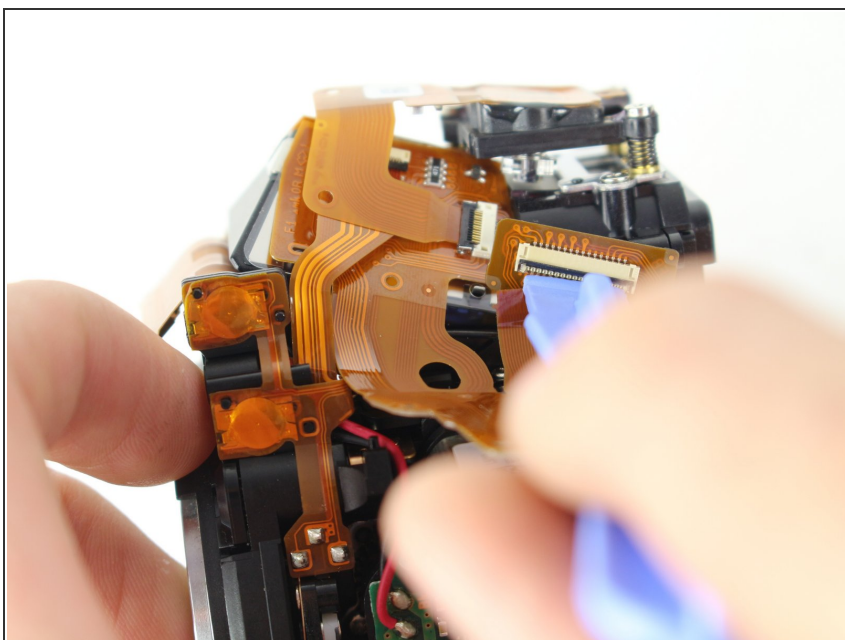
- Pull out ribbon cable from circuit assembly near front left of device.

Step 56



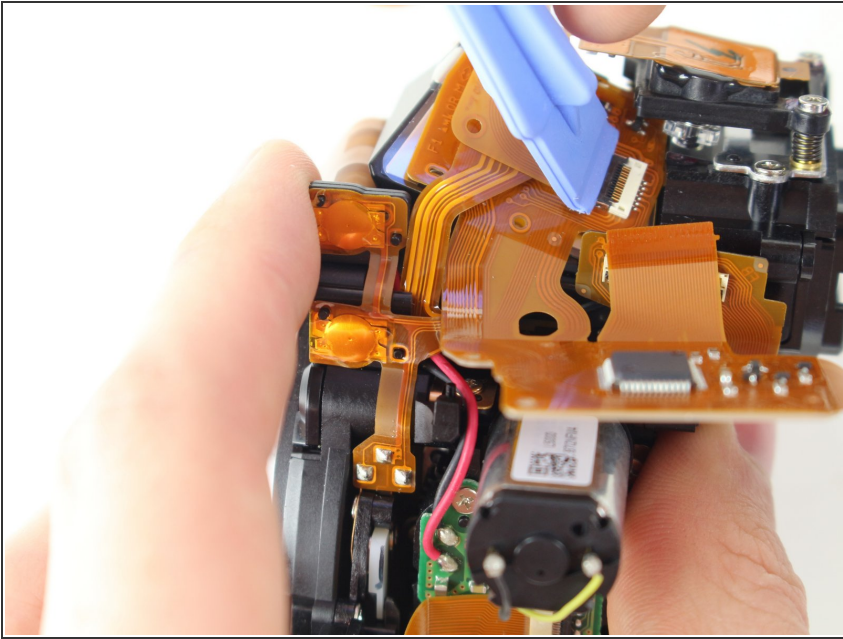
- Desolder red & black power leads.
- ❗ Check out our [soldering guide](#) for help!

Step 57



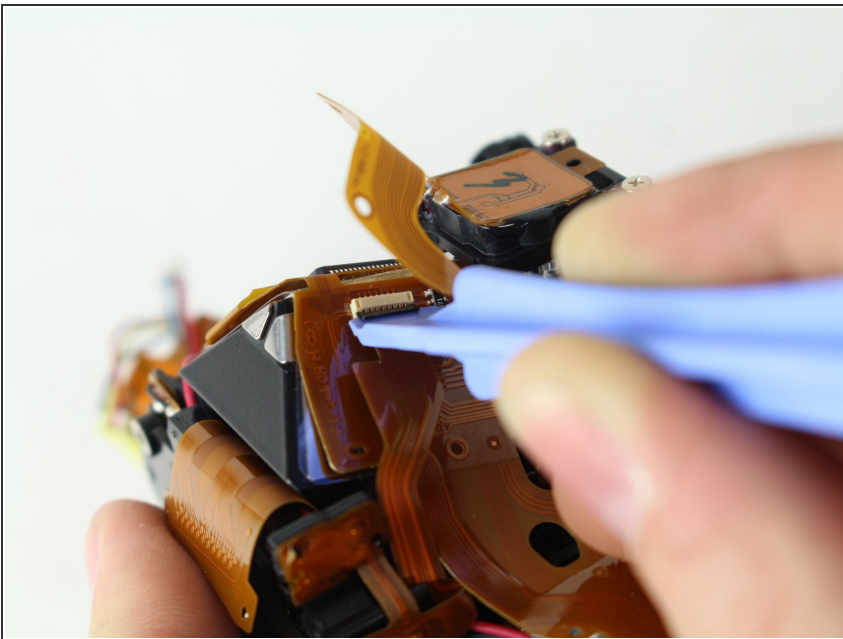
- Disconnect ribbon cable at the top right of camera.

Step 58



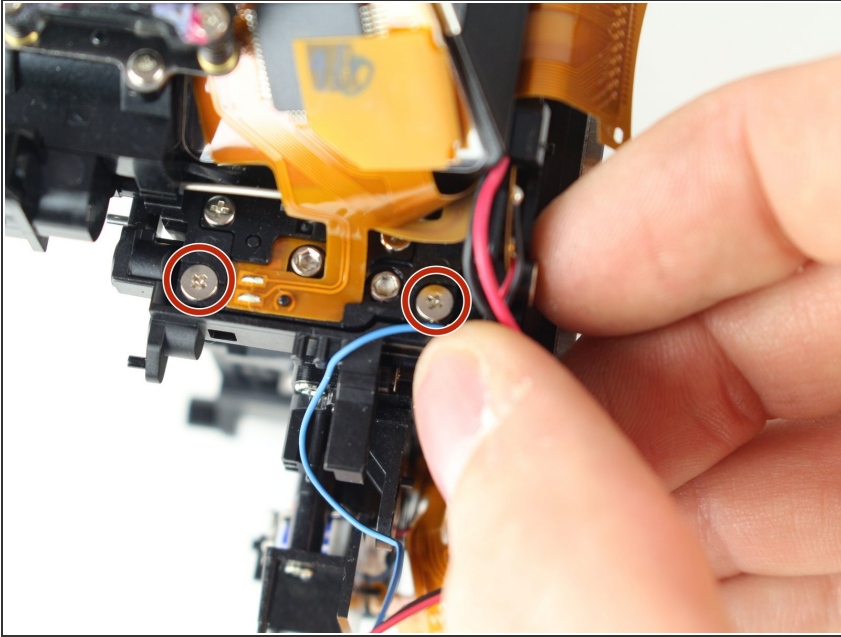
- Disconnect ribbon cable at top right of camera.

Step 59



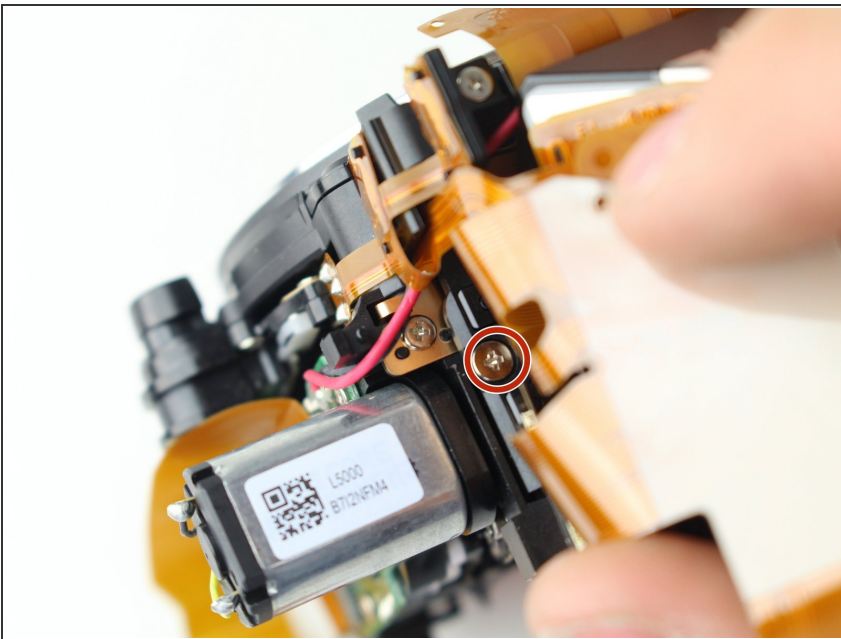
- Disconnected ribbon cable at rear right of viewfinder.

Step 60



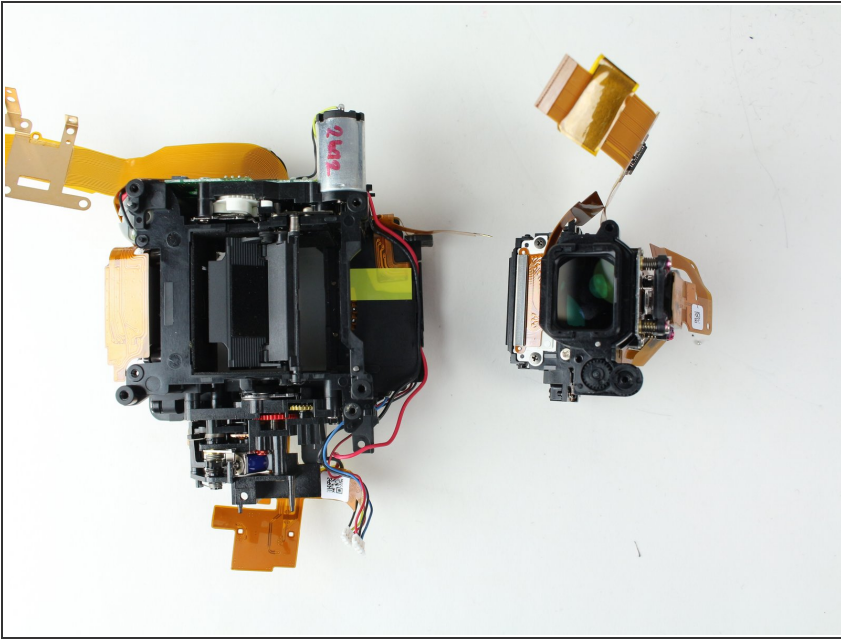
- Remove the two 5.5mm J000 screws

Step 61



- Remove the 5.5 mm J000 screw.

Step 62



- Remove the viewfinder from the mirror box assembly.

To reassemble your device, follow these instructions in reverse order.