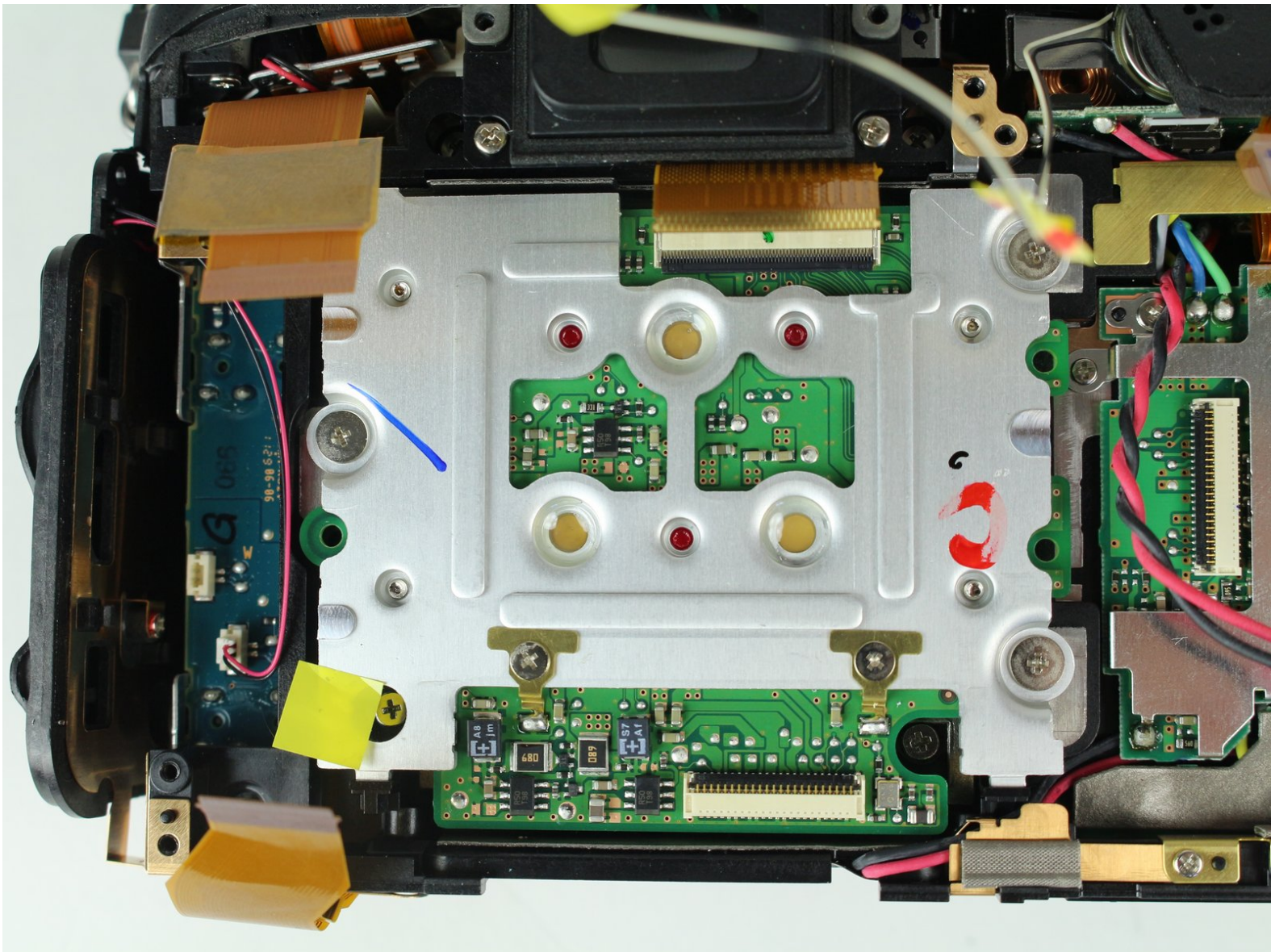




Nikon D7000 Image Sensor Replacement

Replacing the image sensor of a Nikon D7000.

Written By: Jed Chen



INTRODUCTION

Use this guide to replace the image sensor.



TOOLS:

- [Metal Spudger](#) (1)
 - [Phillips #0 Screwdriver](#) (1)
 - [Spudger](#) (1)
 - [Tweezers](#) (1)
-

Step 1 — Motherboard



- Remove the following 5 screws securing the bottom cover to the camera body:
 - Four 6 mm J000 screws.
 - One 8 mm J000 screw (under lens mount).

Step 2



- Remove three 6 mm J000 screws from under the battery cover.

Step 3



- Gently pull the bottom cover off of the camera body.

Step 4



- Remove the following screws from the port area:
 - Two 3.5 mm J000 screws.
 - One 6 mm J000 screw (right above ports).

Step 5



- Peel the rear rubber piece off with tweezers.

Step 6



- Remove one 4.25 mm J000 screw from behind the rear rubber piece.

Step 7



- Pull the eyepiece cover up to remove it.

Step 8



- Remove two 6 mm J000 screws from behind the eyepiece cover.
- ⓘ On D7100 models, there is an additional screw holding the back plate on. This screw is located in the diopter (dial with + - on it). This screw can be accessed by peeling up this sticker on the diopter.

Step 9



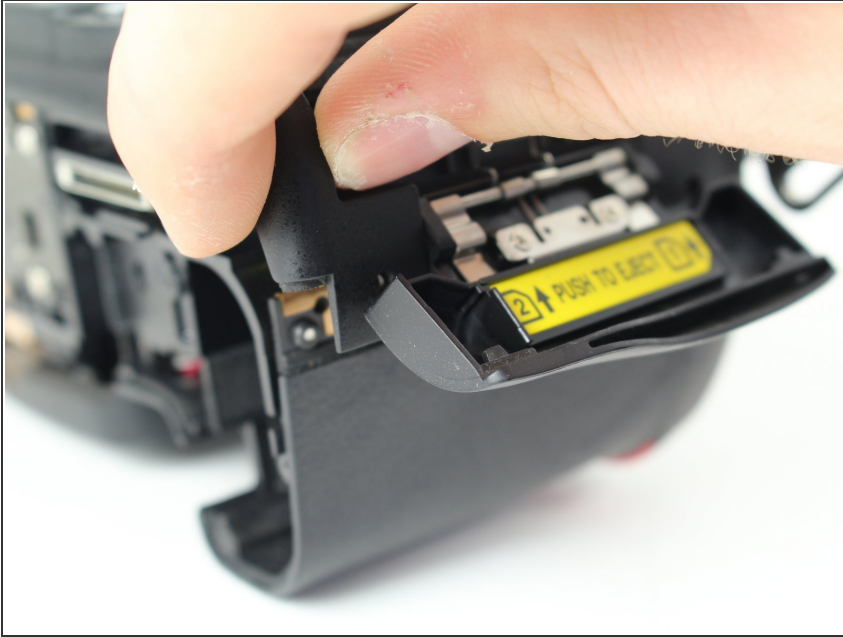
- Open the SD card cover by pushing slightly down with your thumb and sliding up.

Step 10



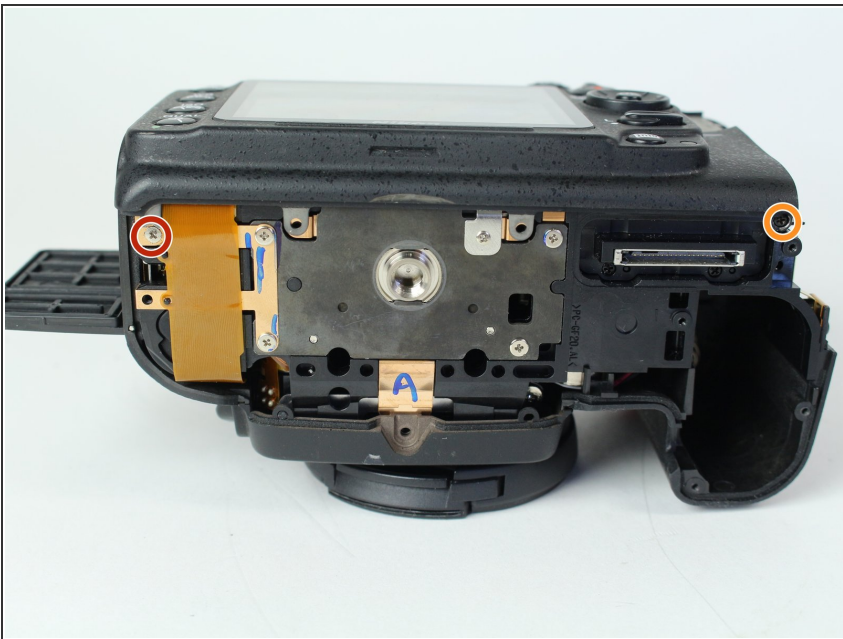
- Remove four 6 mm J000 screws that secure the SD card cover.

Step 11



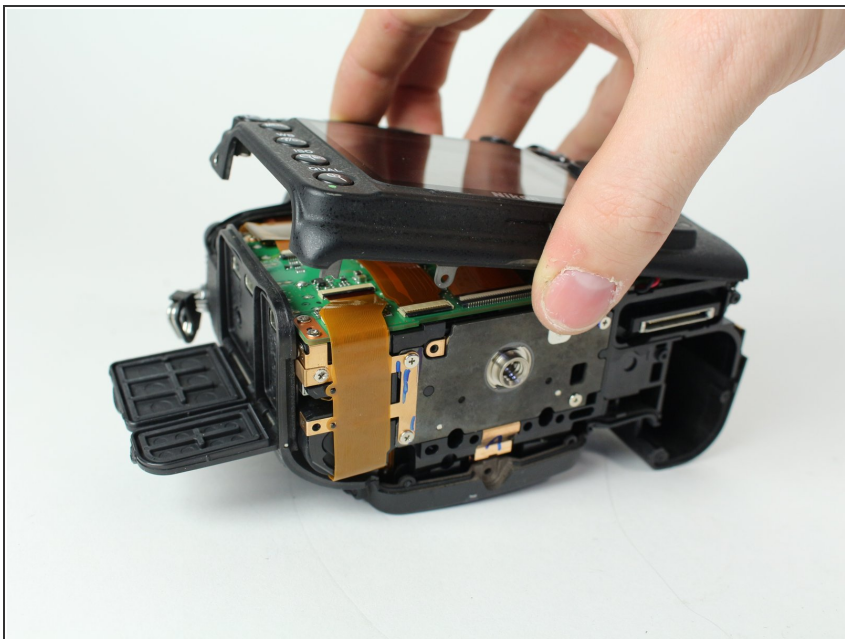
- Gently pull the SD card cover off.

Step 12



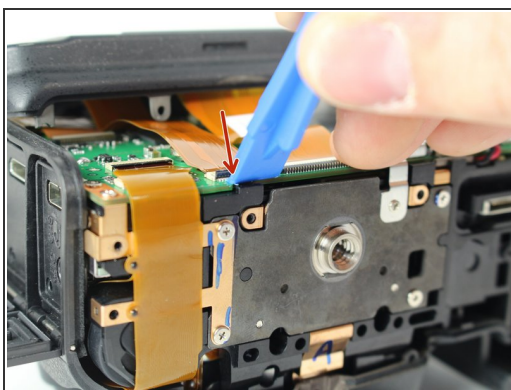
- Remove the following screws that secure the back case:
 - One 6 mm J000 screw.
 - One 3 mm J000 screw.


Step 13



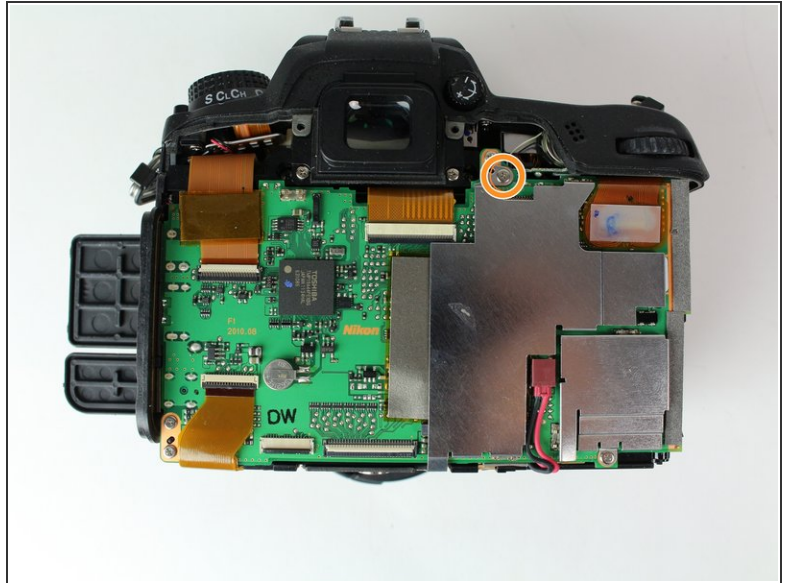
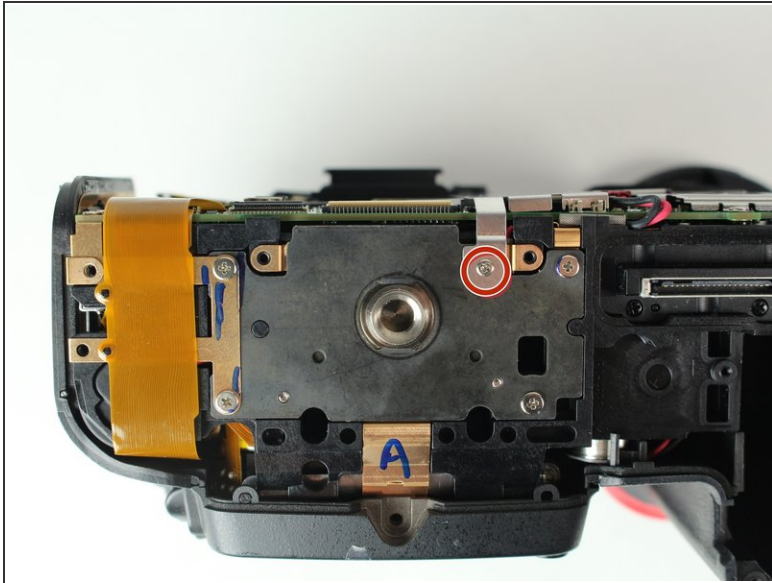
- Carefully lift the back case off.

Step 14



- Disconnect the following two ribbon cables from the motherboard.
-  See our [Cable Connector Guide](#) for help with ribbon cable connectors!

Step 15

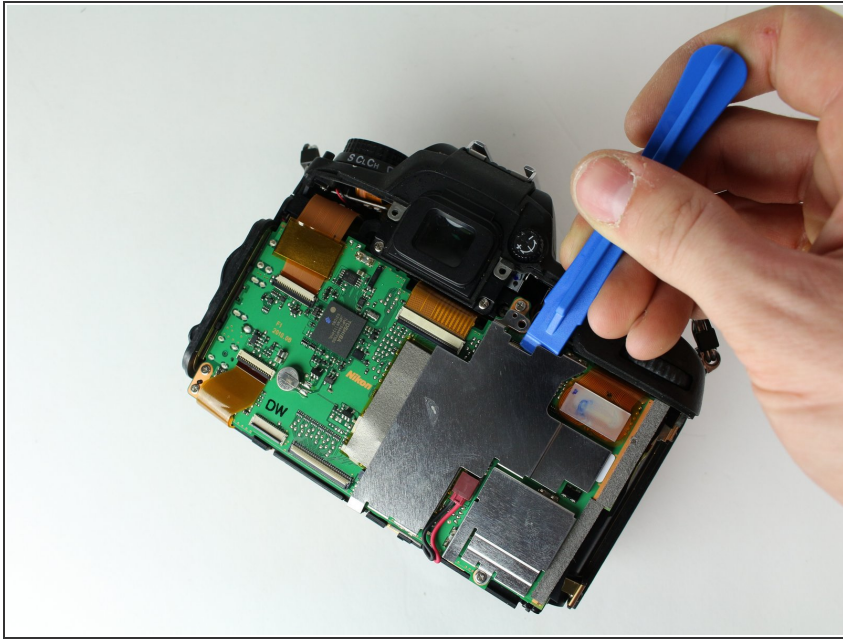


- Remove the following screws securing the left motherboard shield:

- One 2 mm J000 screw (on the bottom).
- One 3.5 mm J000 screw (on the back).

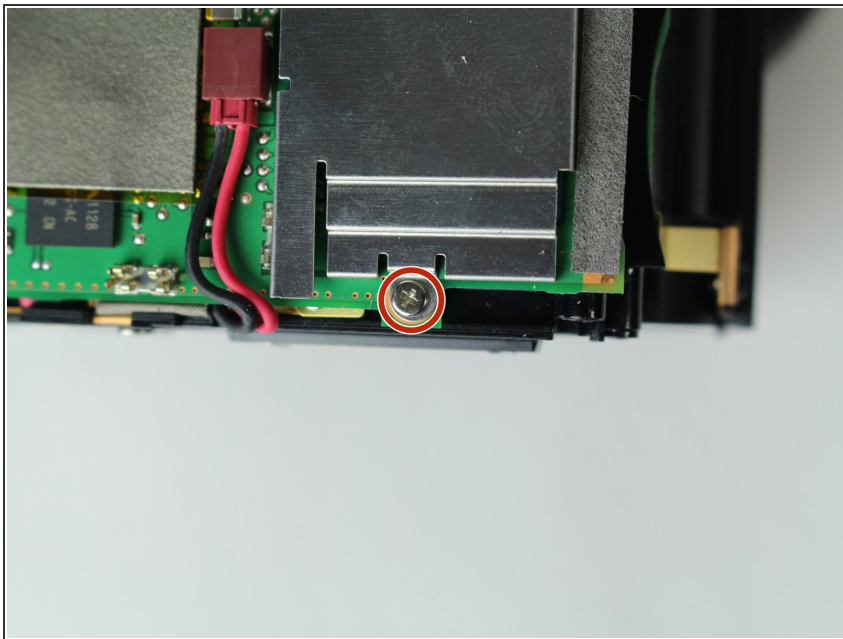
⚠ Be careful of the grounding clips on the motherboard.

Step 16



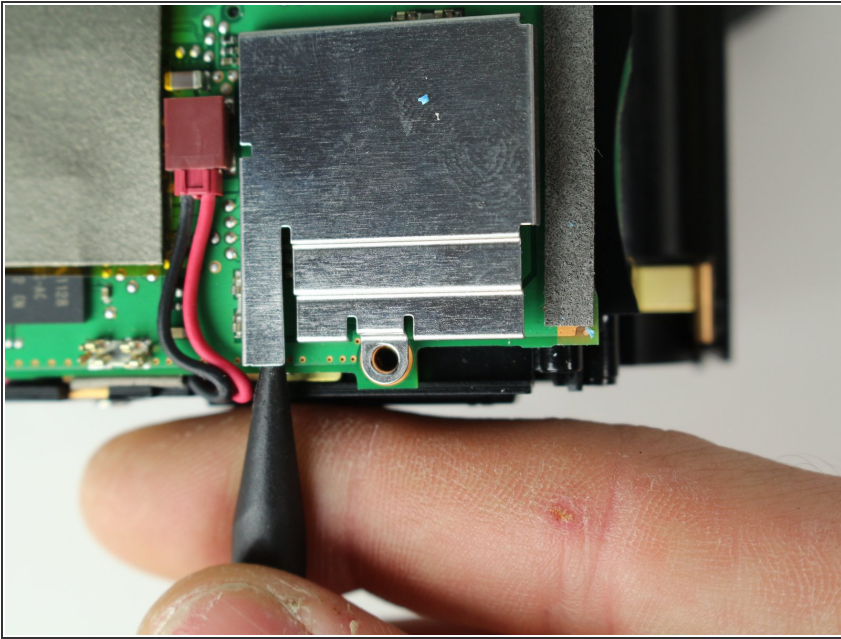
- Gently pry and lift the left motherboard shield off.

Step 17



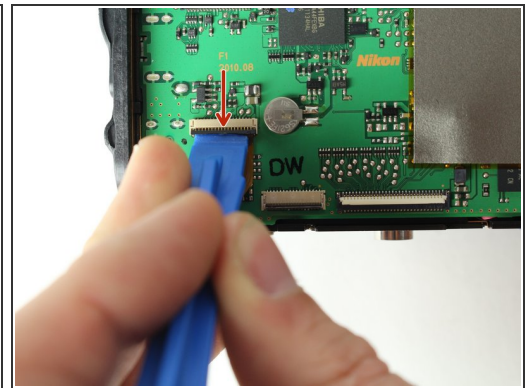
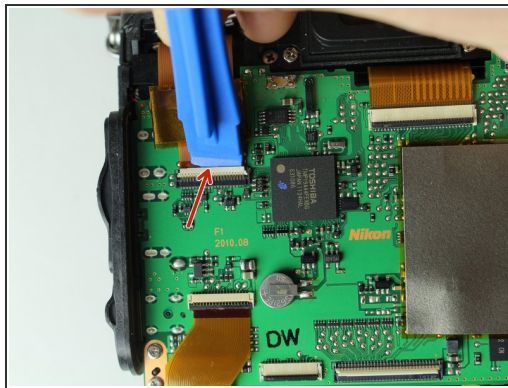
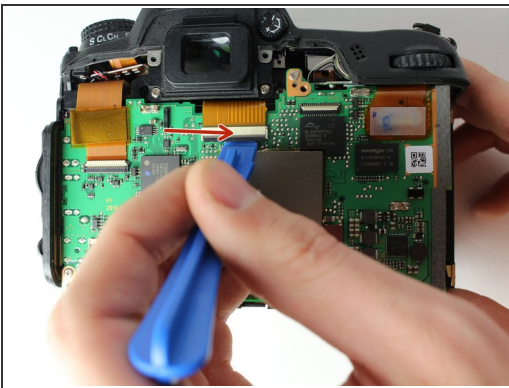
- Remove one 3.5 mm J000 screw securing the right motherboard shield.

Step 18



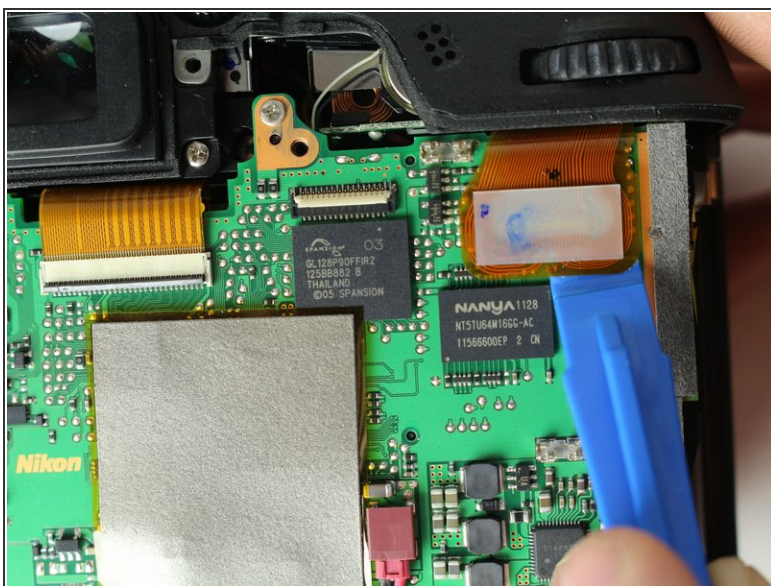
- Gently lift the right motherboard shield off with the tip of a spudger.

Step 19



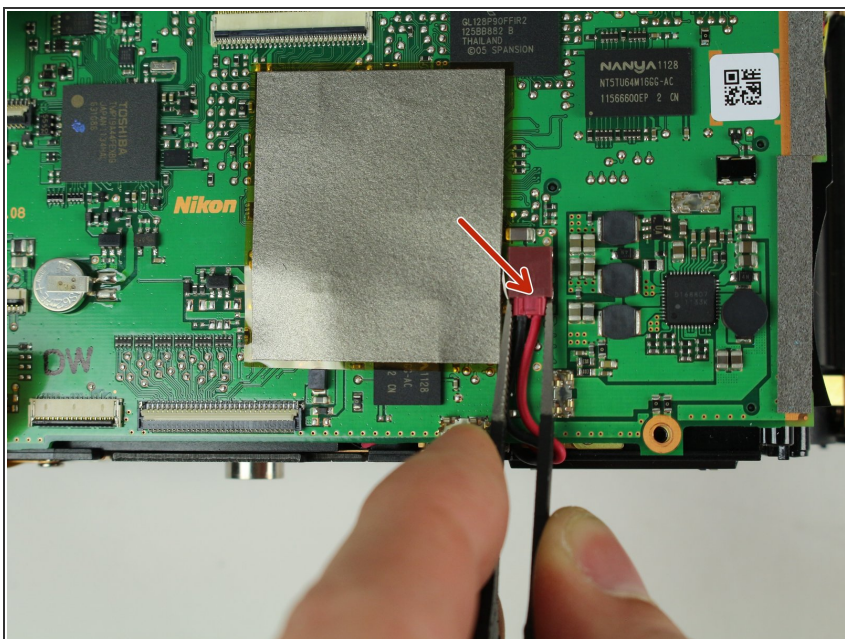
- Disconnect remaining ribbon cables.

Step 20



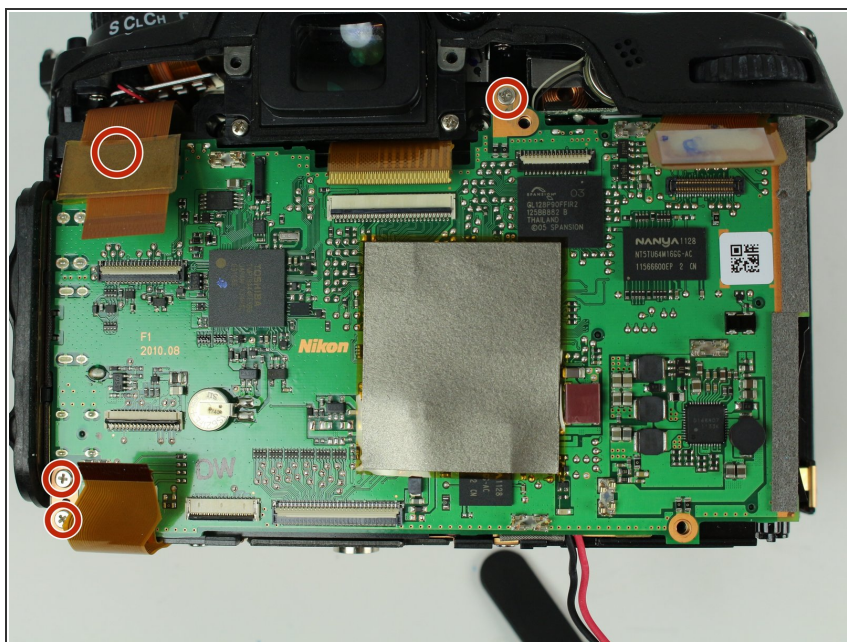
- Disconnect remaining ribbon cables.

Step 21



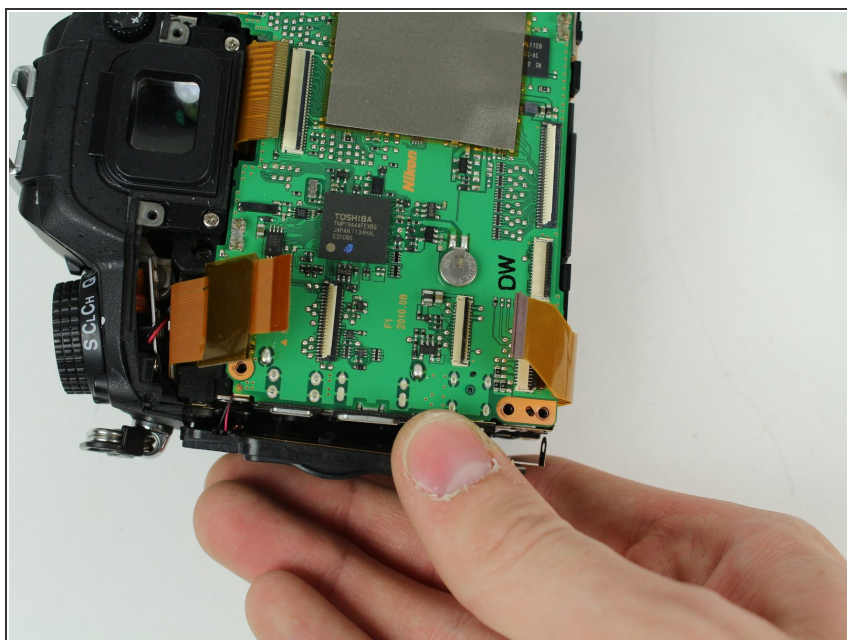
- Carefully disconnect the red connector with tweezers.

Step 22



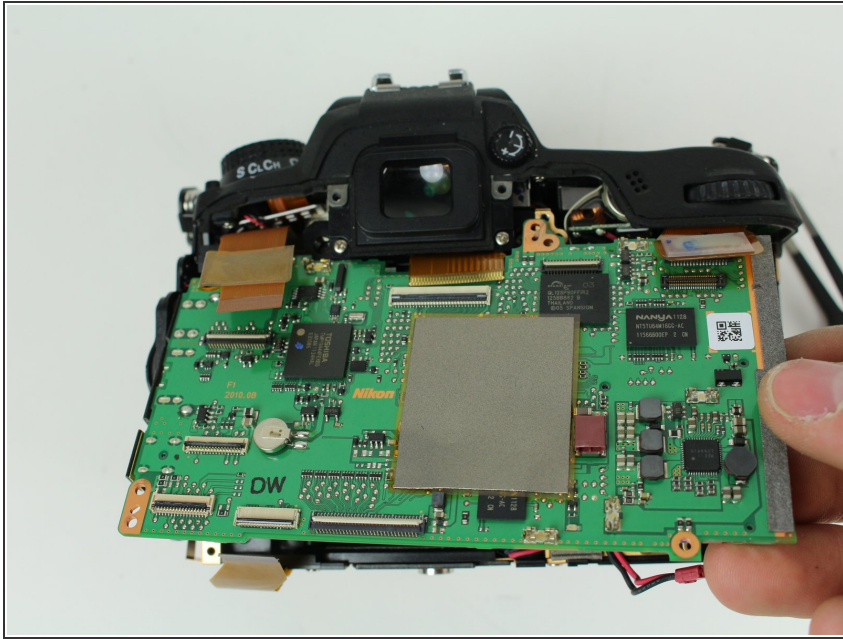
- Remove four 3.5 mm J000 screws securing the motherboard.

Step 23



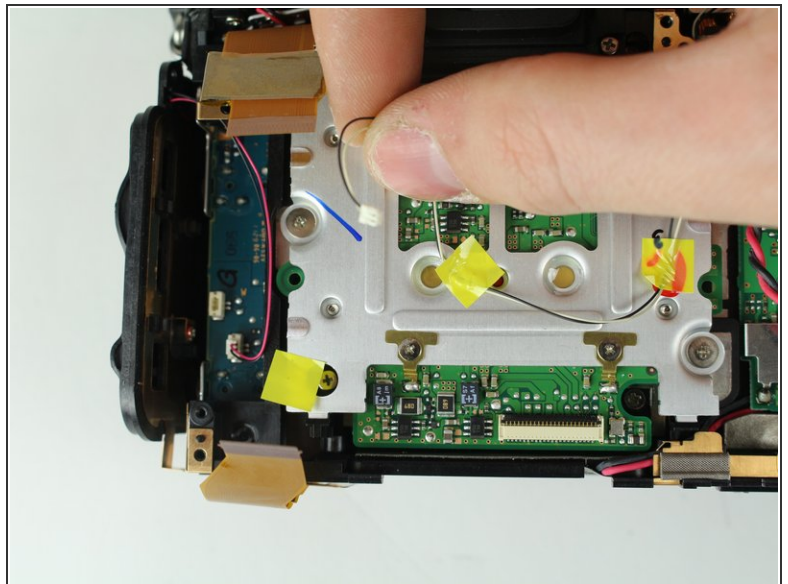
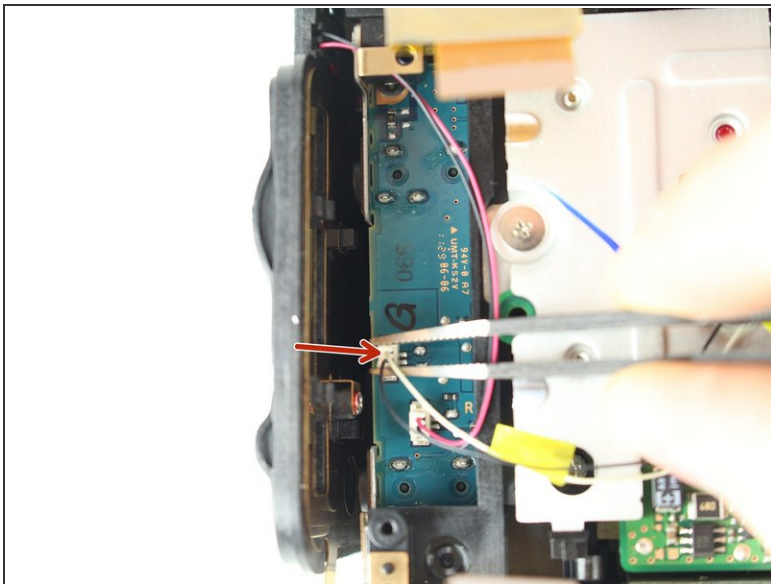
- Gently pull the port side cover away from the motherboard.

Step 24



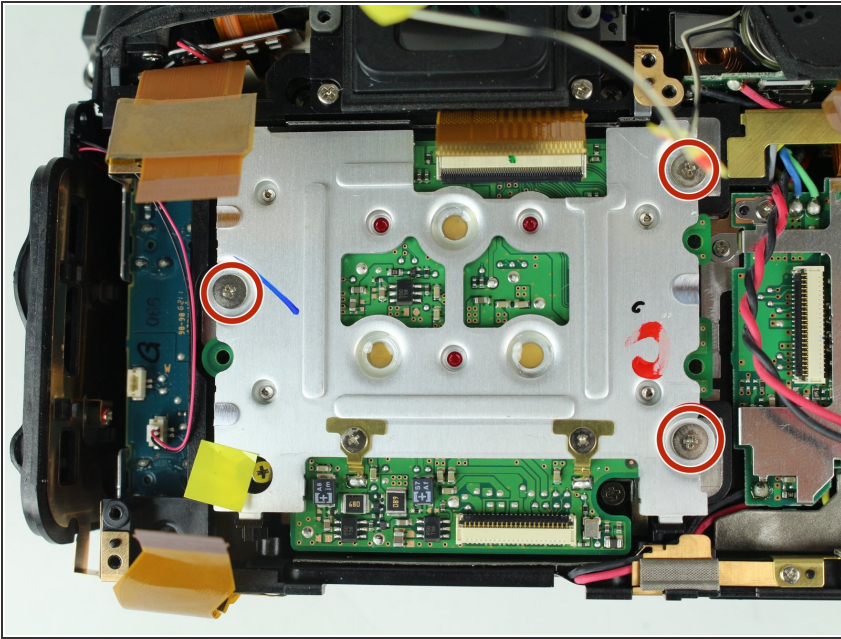
- Lift the motherboard off.

Step 25 — Image Sensor



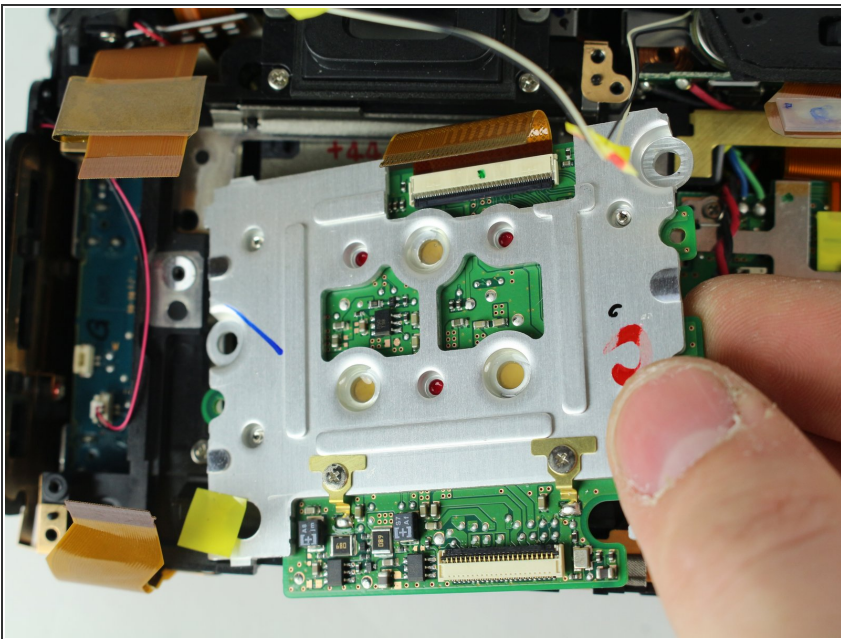
- Disconnect black and white speaker cable.

Step 26



- Remove three 6 mm J000 screws securing the image sensor.

Step 27



- Carefully lift the image sensor plate out of the camera.

To reassemble your device, follow these instructions in reverse order.