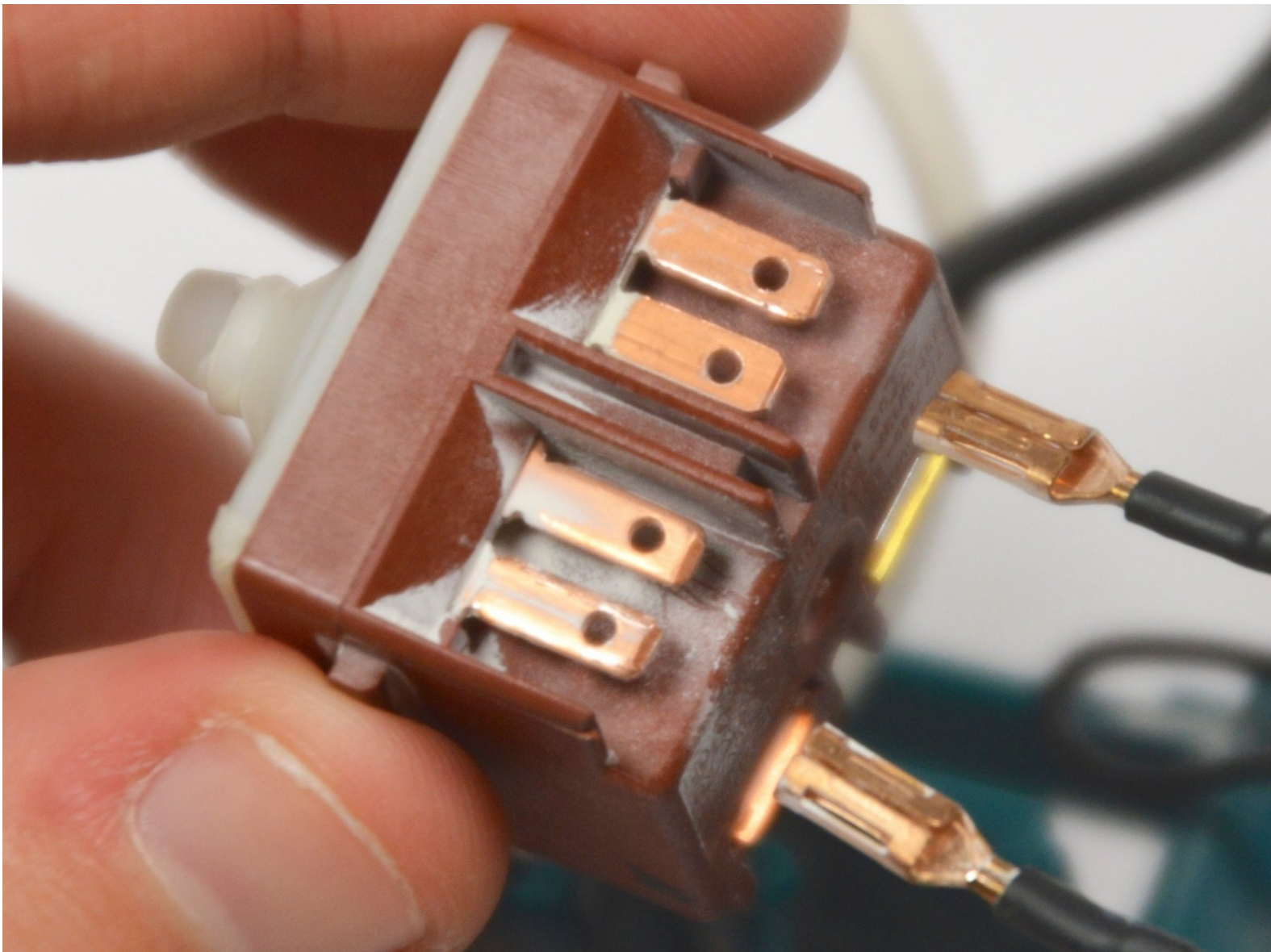




# Makita GA4030K Switch Replacement

This guide will assist you in replacing the switch on your angle grinder.

Written By: Nyssa Backes



---

## INTRODUCTION

This guide outlines the replacement of the internal electrical switch.



### TOOLS:

- [Spudger](#) (1)
  - [Phillips #2 Screwdriver](#) (1)
-

## Step 1 — Back Cover



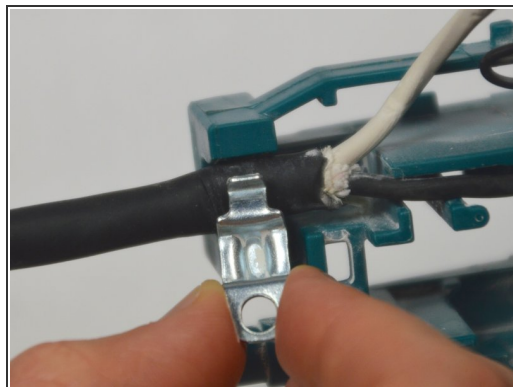
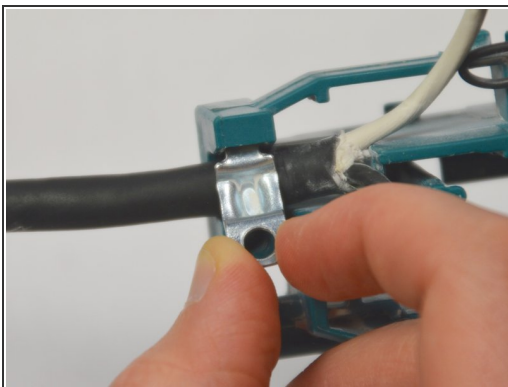
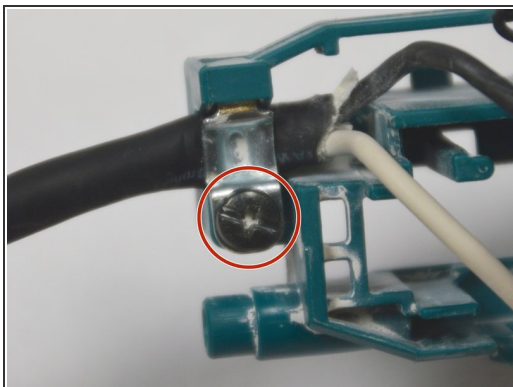
- Unscrew the 20 mm tapping screw using a Philips #02 screwdriver.

## Step 2



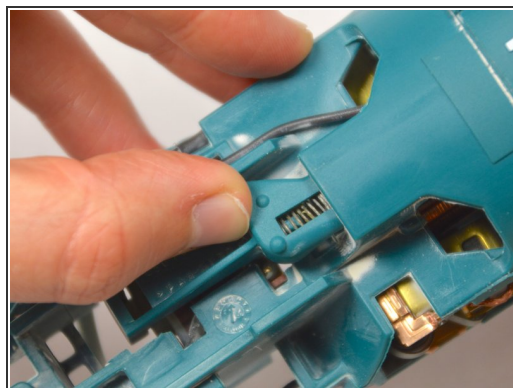
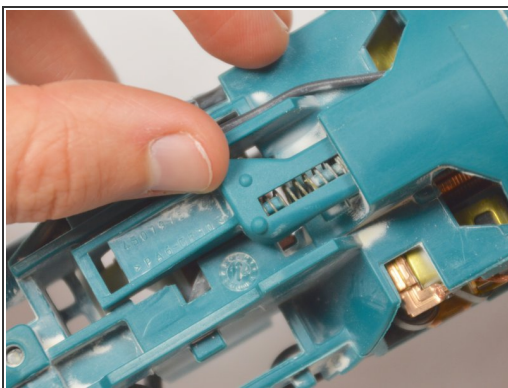
- Slide the back cover down the power cable.

### Step 3 — Switch



- Unscrew the 20 mm tapping screw using a Phillips #02 screwdriver.
- Lift the clasp up and out to remove.

### Step 4



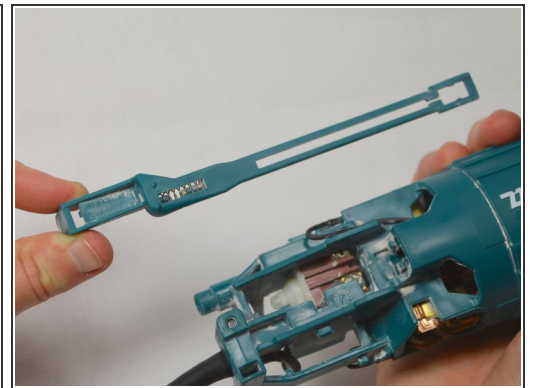
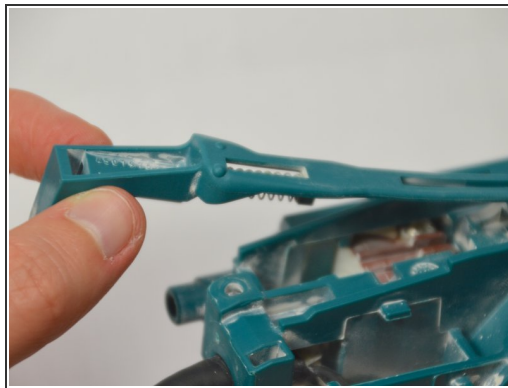
- Place your finger in the gap in front of the switch. Now, at the base of the device, push the switch lever into the 'on' position.

## Step 5



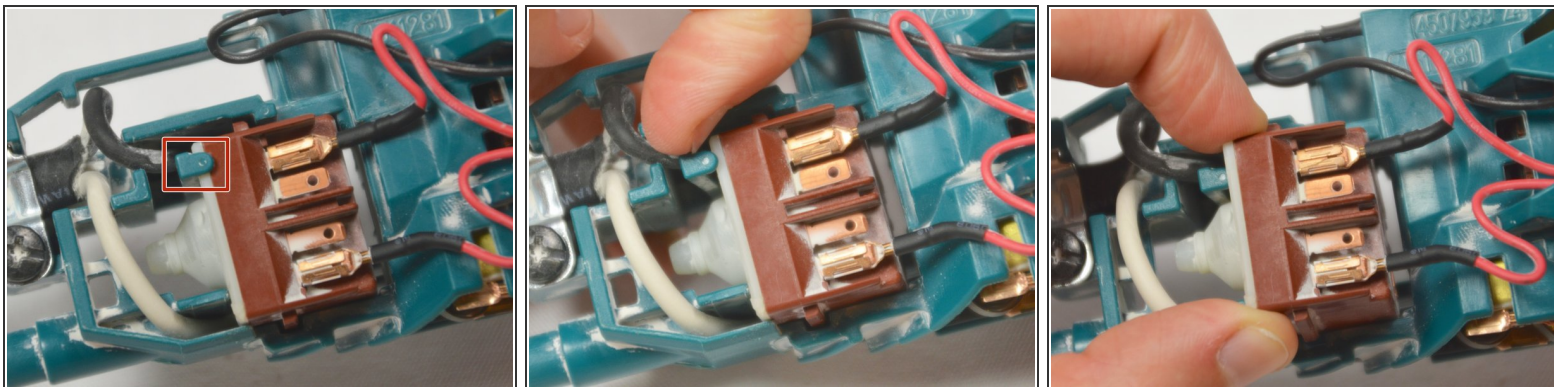
- Keeping the switch lever in the 'on' position, remove the switch.
- ★ When reinserting the switch, place the switch in the hole without pressing the switch lever in. Holding the switch against the back edge of the hole, push the switch lever fully into the 'on' position and then let go. The switch should catch onto the switch lever and remain attached.

## Step 6



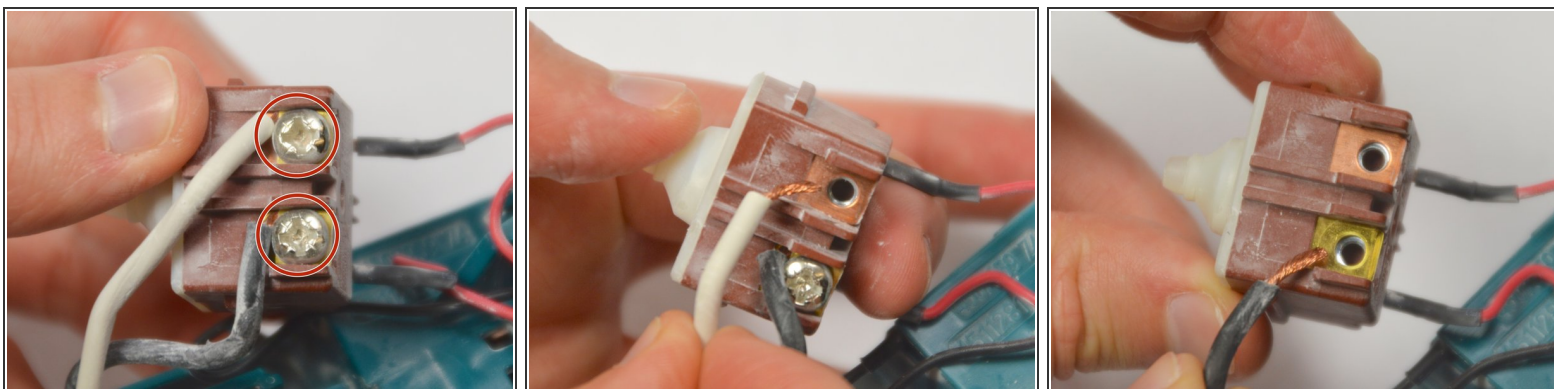
- Pull the switch lever up and out of the body of the angle grinder.

## Step 7



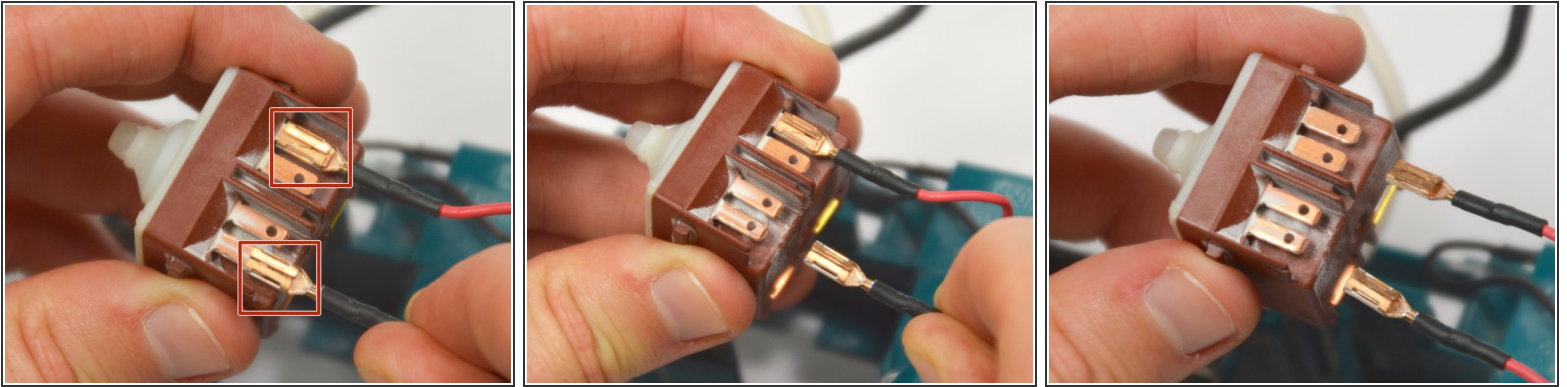
- Pull back the plastic clip and pull the internal switch up and out of the cavity.

## Step 8



- Remove the two 10 mm screws holding the power cord leads in place using a Phillips #02 screwdriver.
- ⓘ When reassembling, be sure to attach the power cabling in the same positions.

## Step 9



- Pull the two leads leading to the motor off of the switch.
  - ⓘ When inserting the leads of the new switch make sure that they are inserted into the two outside spaces on the internal switch mechanism.

To reassemble your device, follow these instructions in reverse order.