

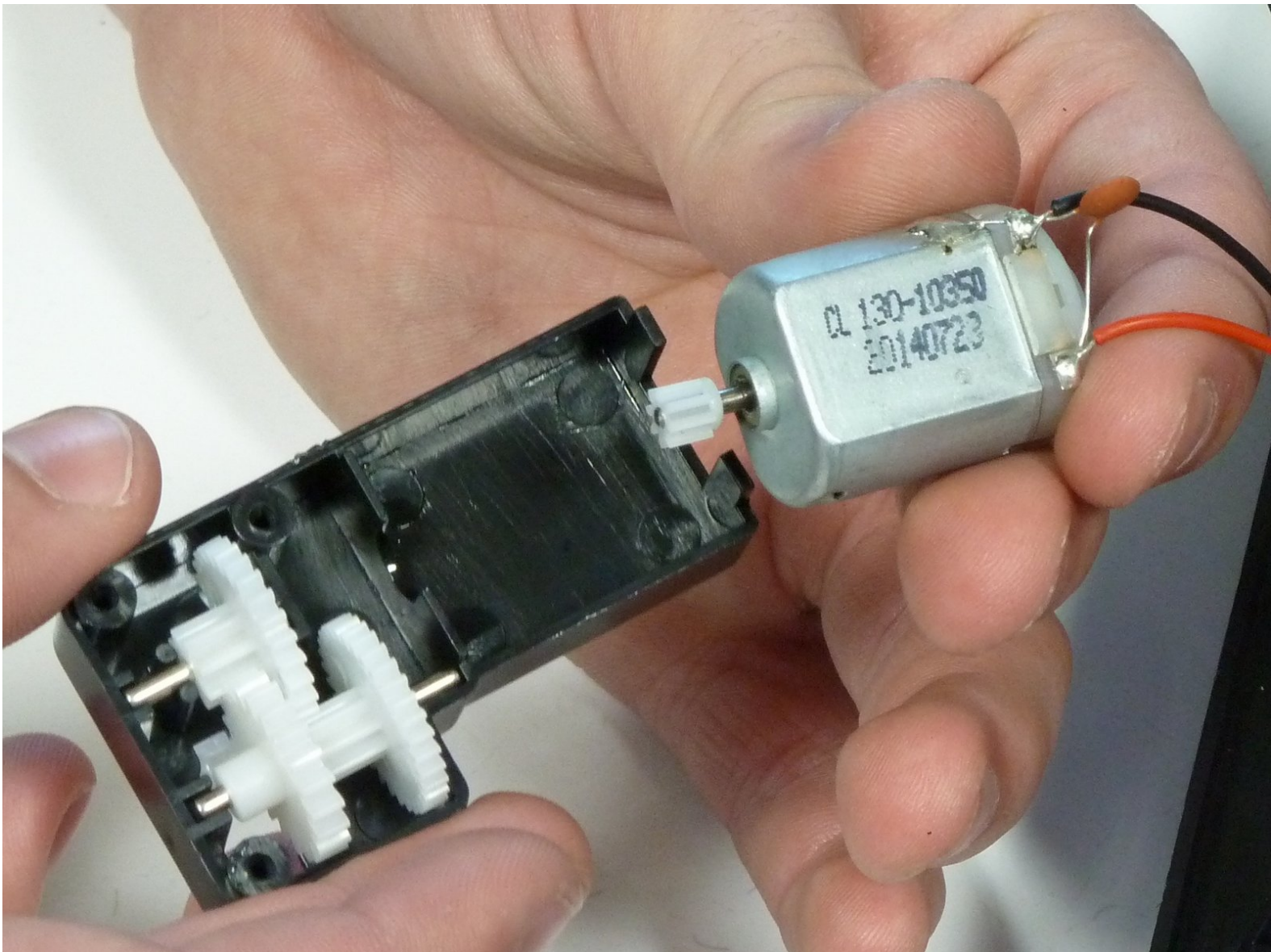


X-street Lamborghini Murcielago LP670-4 SV

Front Steering Motor Replacement

The steering motor at the front of the car may fail and need replacing. This guide will help disassemble the car so the front motor is easily accessible and removable.

Written By: Trent Peterson



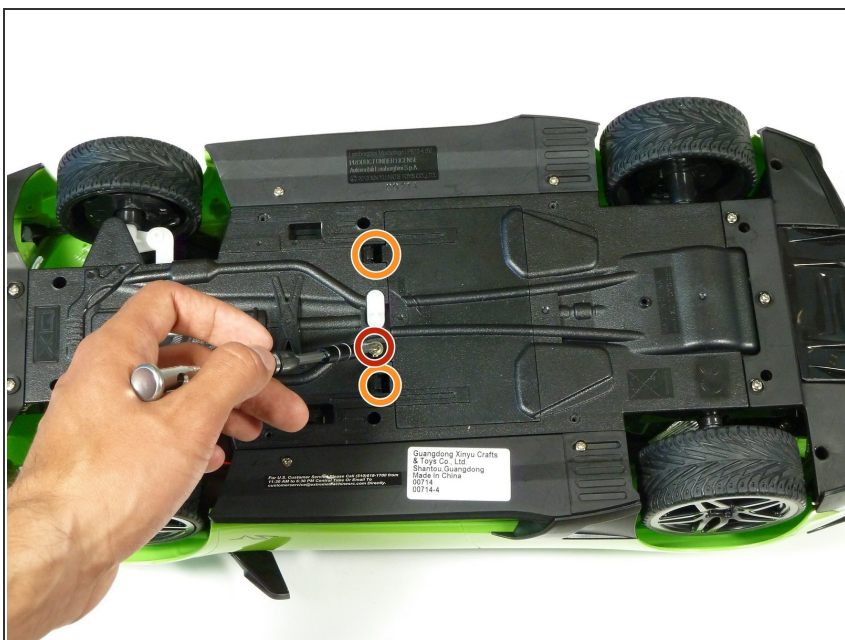
INTRODUCTION

The front steering motor provides power to the steering column which turns the wheels to one side. If the car fails to turn to one side or the other, it is possible the front steering motor needs replacement.

TOOLS:

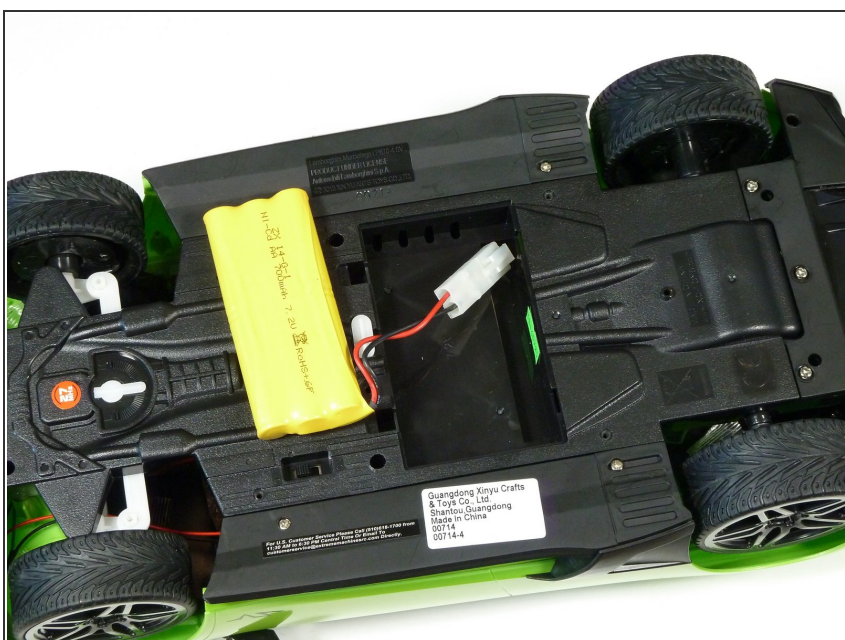
- [Phillips #00 Screwdriver](#) (1)
 - [Phillips #000 Screwdriver](#) (1)
-

Step 1 — Battery



- Unscrew the two 2.5mm Phillips #00 screws from the middle of the car.
- Unclip the two clips to remove the battery cover.

Step 2



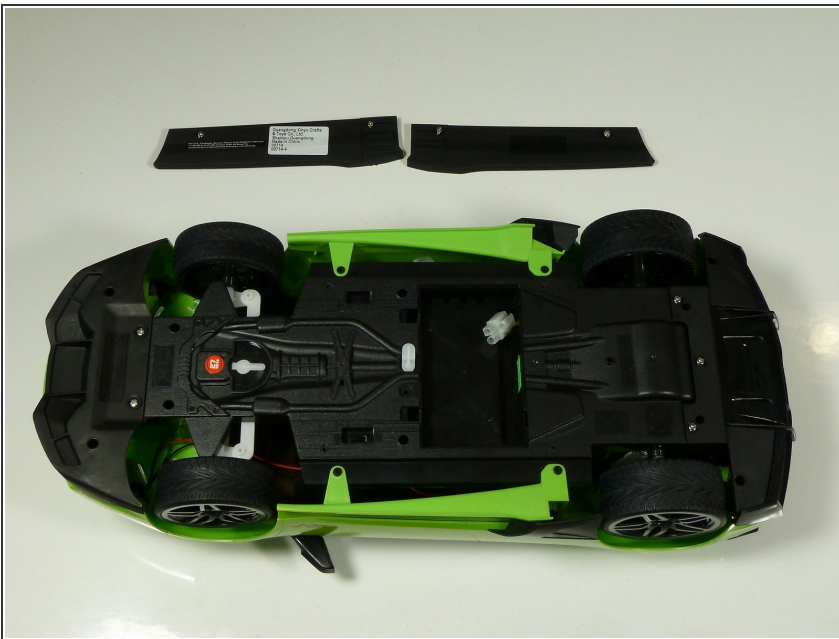
- Unplug the battery by pushing on the clip.

Step 3 — Underbody



- Unscrew the two 2.5mm Phillips #00 screws from each side

Step 4



- Remove the side skirt covers on each side of the car.

Step 5



- Lift up and remove the two side skirts.

Step 6



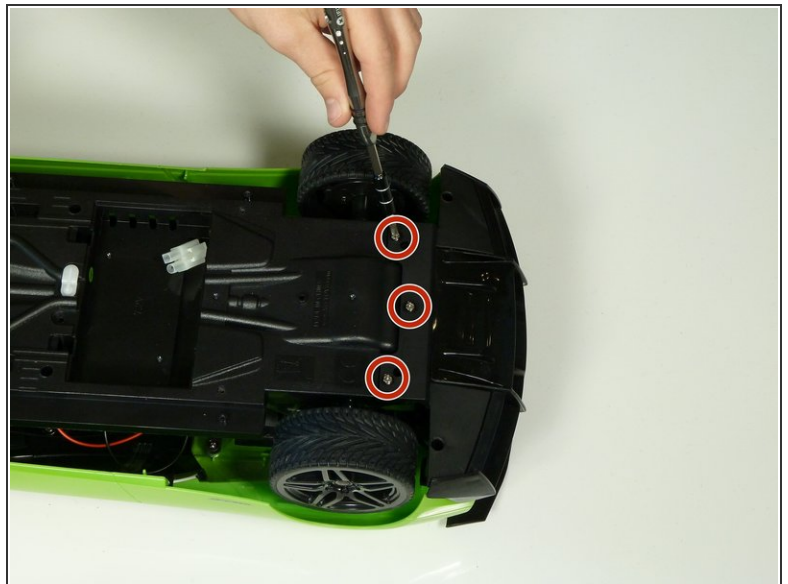
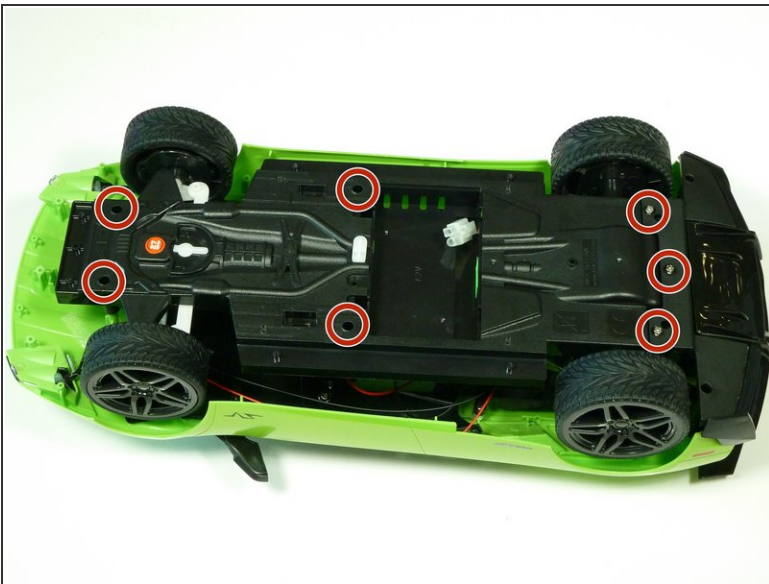
- Unscrew the two 2.5mm Phillips #00 screws from the front skirt of the car.

Step 7




- Lift the front part of the underbody and pull it out from the main underbody.

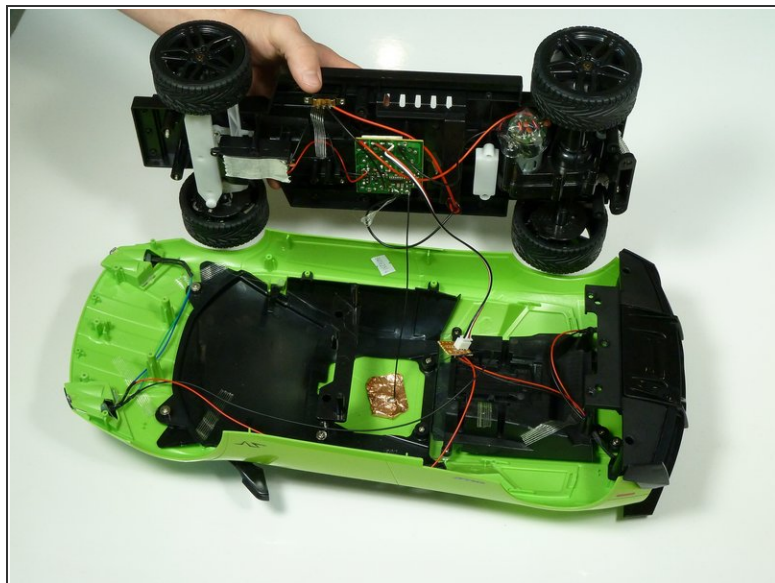
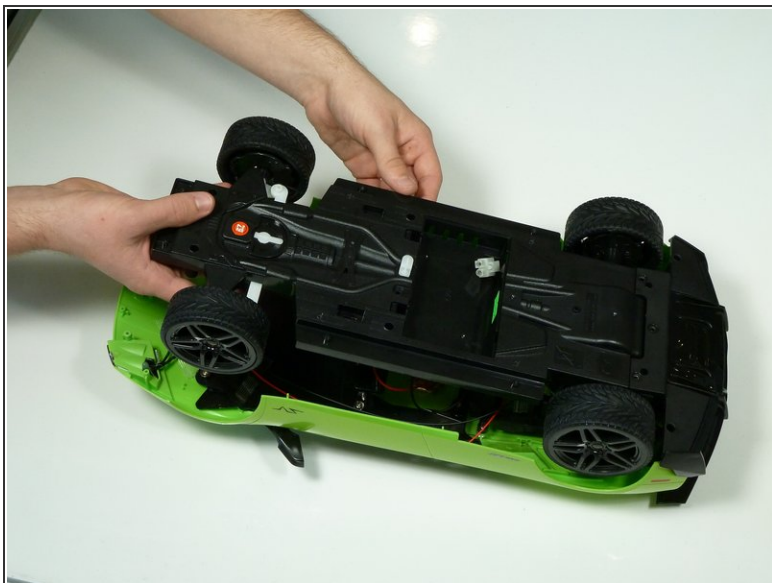
Step 8



- Unscrew the remaining seven 9mm Phillips #00 screws from the underbody of the car.

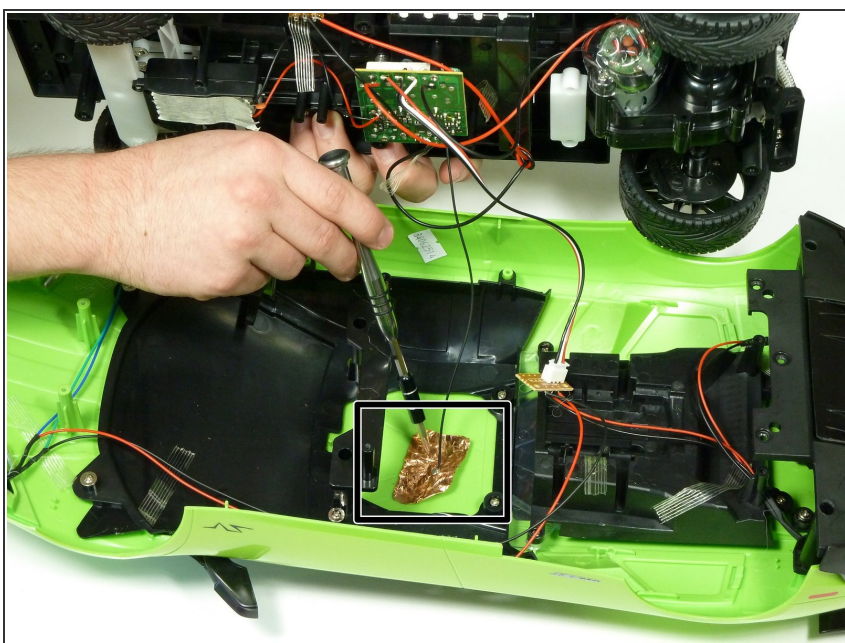
 The second image shows a closer view of the rear three screws

Step 9



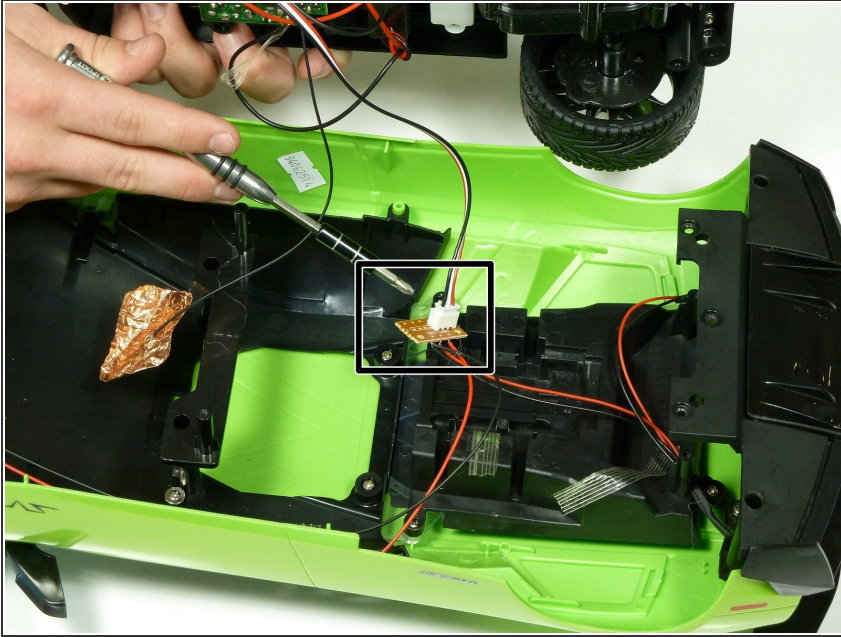
- Lift the main underbody from the shell of the car.
- Lift up the body to expose the wiring and hardware underneath.

Step 10



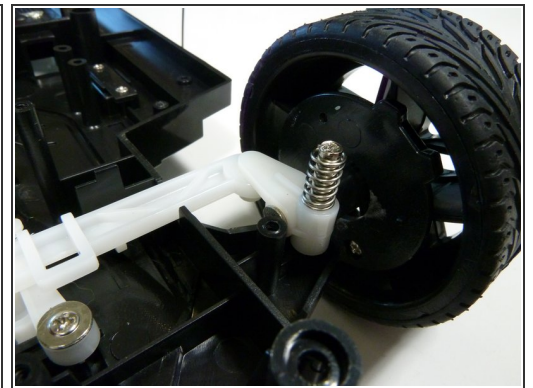
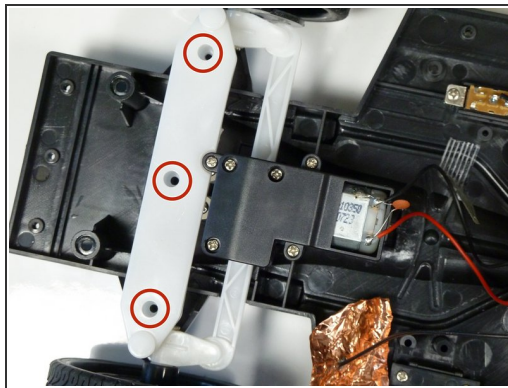
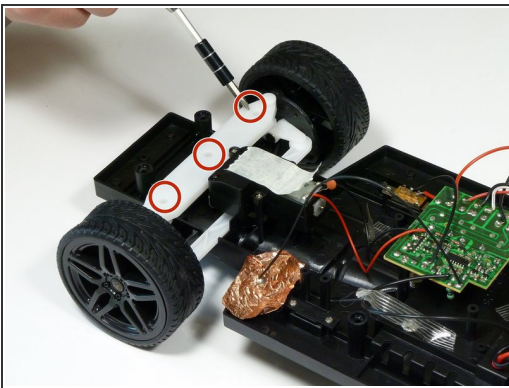
- Remove the reflective sticker from the top of the body.

Step 11



- Unplug the wire connector.

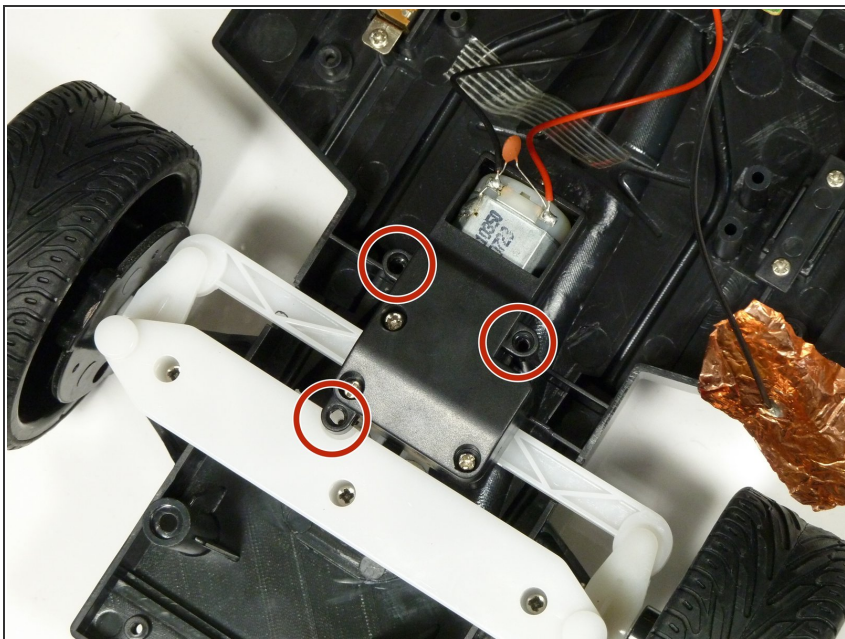
Step 12 — Steering Column



- Unscrew the three 2.5mm Phillips #00 screws from the white steering column.

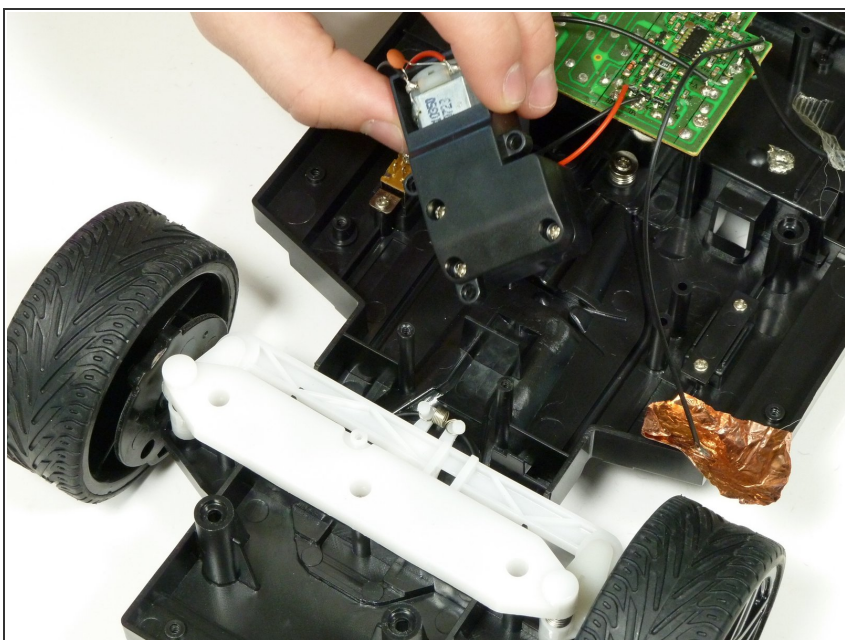
⚠ After removing the three screws, the steering column will pop out of position because of the springs underneath. To reassemble, put the springs back together as shown in picture #3.

Step 13 — Front Steering Motor



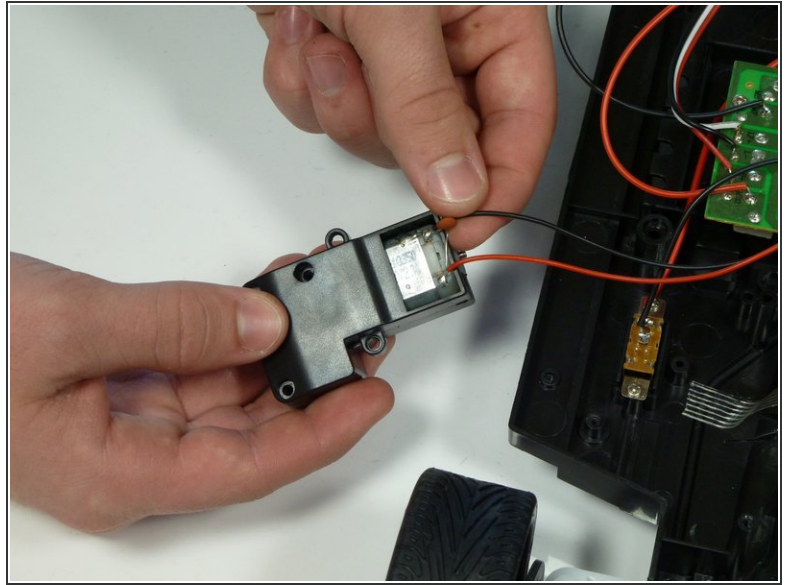
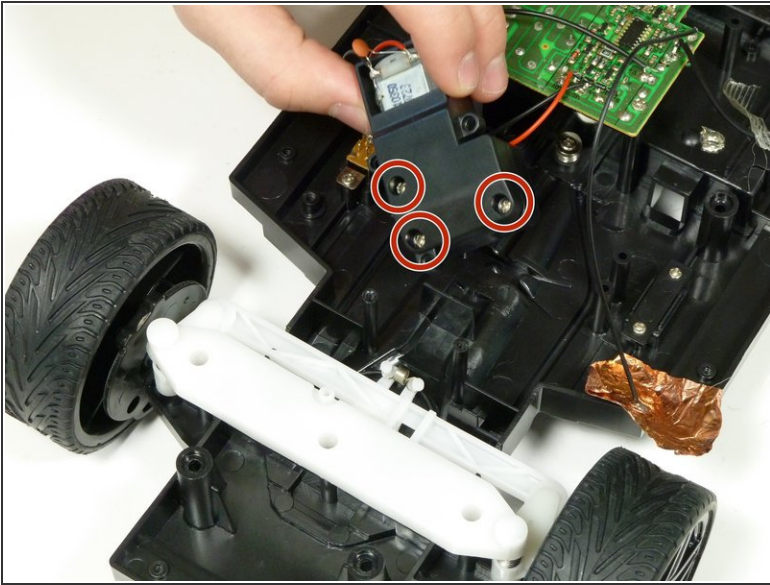
- Remove the three 1.6mm Phillips #000 screws from the black motor casing

Step 14



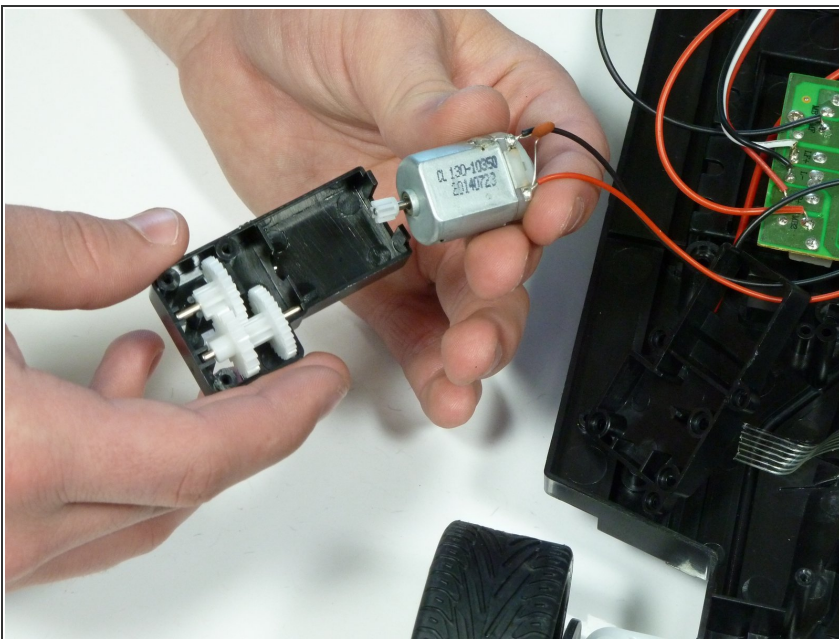
- Remove the front motor and its casing from the chassis of the car.

Step 15



- Remove the remaining three 1.6 mm Phillips #000 screws from the black motor casing
- The second image shows the screws removed from the casing.

Step 16



- Pull out the front motor, making sure to keep the gears intact

To reassemble your device, follow these instructions in reverse order.