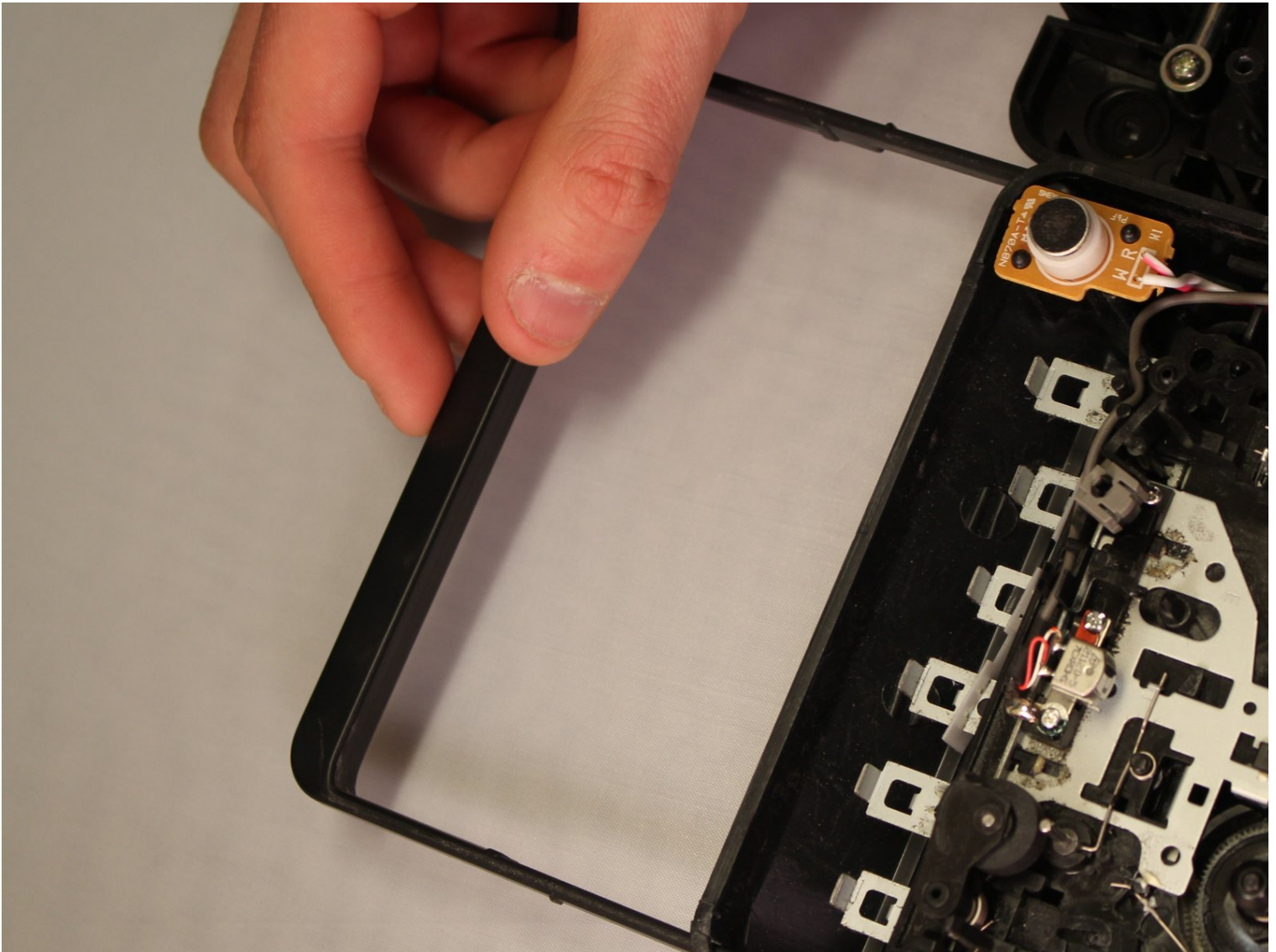




Panasonic RQ-2102 Holding Handle Replacement

In this guide, you will learn how to replace...

Written By: Andrew Campbell



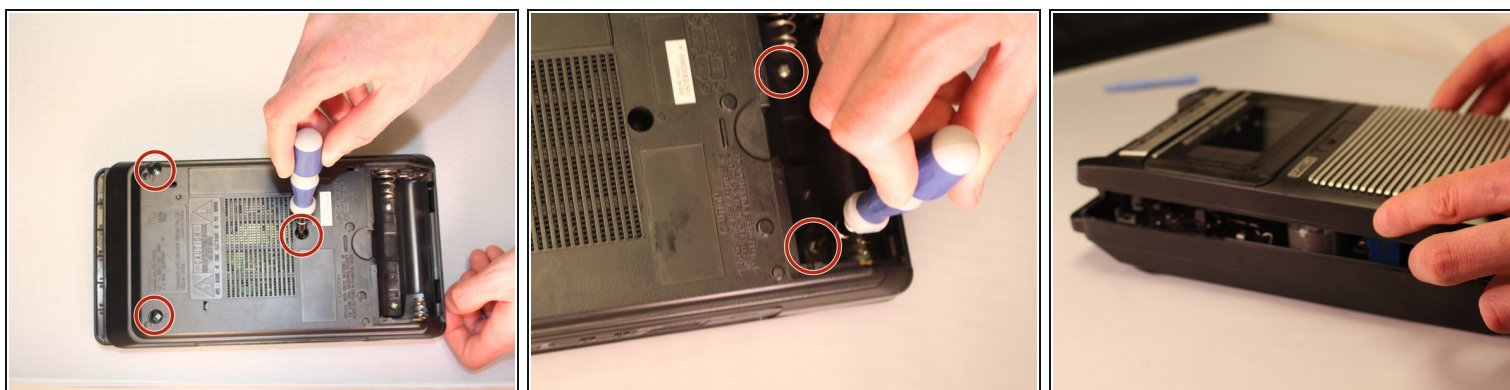
INTRODUCTION

In this guide, you will learn how to replace the holding handle on a Panasonic RQ-2102. Since the handle is made of plastic, it is likely to break after heavy use. In this case, replacing it is easy. However, if the two handle catches are broken, the entire body needs to be replaced as they are molded to the body and hold the handle in place.

TOOLS:

Tournevis cruciforme #0 (1)

Step 1 — Holding Handle

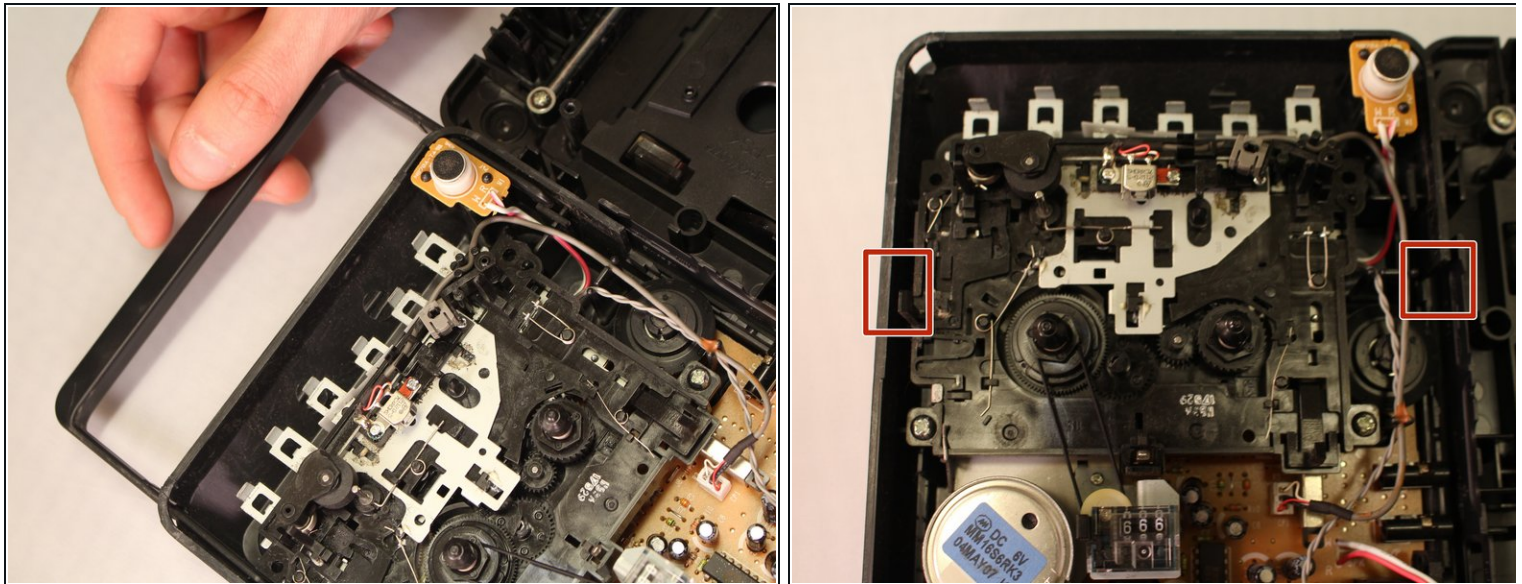


- Remove the three M5-0.8 x 12 mm Phillips #0 screws from the back of the device body.
- There are two more screws inside the battery compartment. Remove those as well.

 **Cautiously remove the back of the device body. Be sure not to damage the cord that connects the two sides.**

 All of the screws are the same size.

Step 2



- Carefully remove the handle. Make sure the handle catches on each side are intact.
 - Replace the old handle with the new handle.
- ☒ Remember, if the handle catches are broken, the device must be replaced.

To reassemble your device, follow these instructions in reverse order.