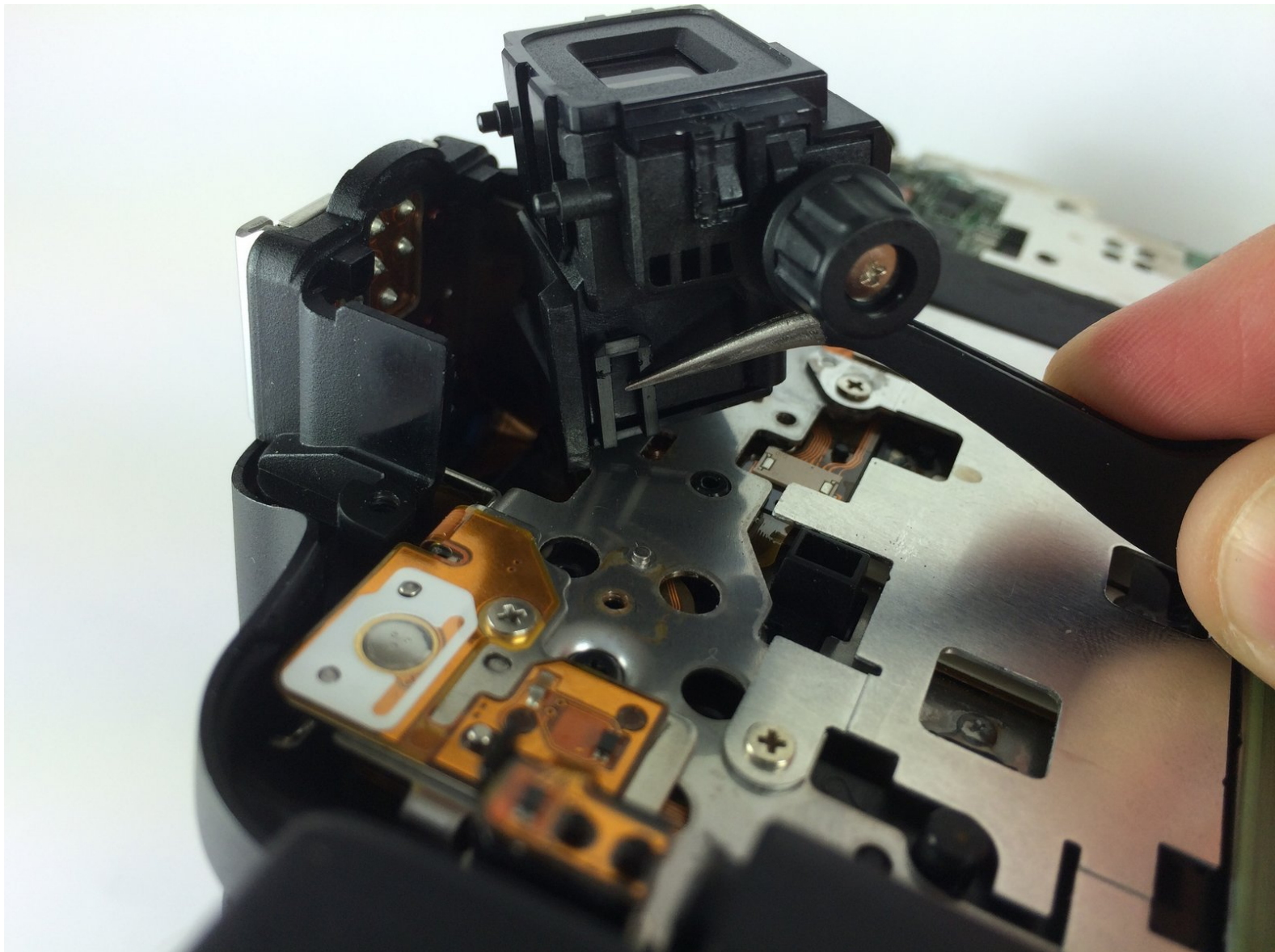




Canon PowerShot SX50 HS Eyepiece Replacement

This guide will explain how to remove and replace the eyepiece.

Written By: Megan Rund



INTRODUCTION

Replace the eyepiece of the Canon PowerShot SX50 HS.



TOOLS:

- [Tweezers](#) (1)
 - [Phillips #000 Screwdriver](#) (1)
 - [iFixit Opening Tools](#) (1)
-

Step 1 — Battery



- Locate the battery compartment on the bottom of the camera.
- Push the latch on the outside of the battery door to the right to get to the battery pack inside.

Step 2



- Pull the brown latch on the inside of the battery door towards your palm (to the left). The battery pack should pop out (battery not pictured).
- Now remove the battery pack from the camera with your fingers.

Step 3 — Rear Case



- Remove the two Phillips #000 screws, length 5 mm, on either side of the viewfinder.
- Remove the one Phillips #000 screw, length 4 mm, on the bottom, closer to the back side of the camera.

Step 4



- Remove the two Phillips #000 screws, length 3 mm, on the left side of camera.
- Remove the Phillips #000 screw, length 4 mm, located between the two 3 mm screws.
- Remove the two Phillips #000 screws, length 4 mm, on the bottom left corner of the camera.

Step 5



- Find the "A/V Out Digital" charging station and lift up the flap.
- Remove the two Phillips #000 screws, length 5 mm, that are under the "A/V Out Digital" flap.
- Remove the one Phillips #000 screw, length 5 mm, that is outside the "A/V Out Digital" flap.

Step 6



- Use the plastic opening tool to carefully start lifting up the camera's left-side panel. Then use your fingers to pry off the rest.

Step 7



- Make sure the LCD screen panel, the battery compartment door, and the 'A/V Out Digital' flap are all open.
- Using your fingers, carefully pry off the back encasement (you may need to use a plastic opening tool to help you).

⚠ Do not remove the back casing too far or too quickly. There is a wire ribbon attaching the back encasement to the motherboard that is very delicate.

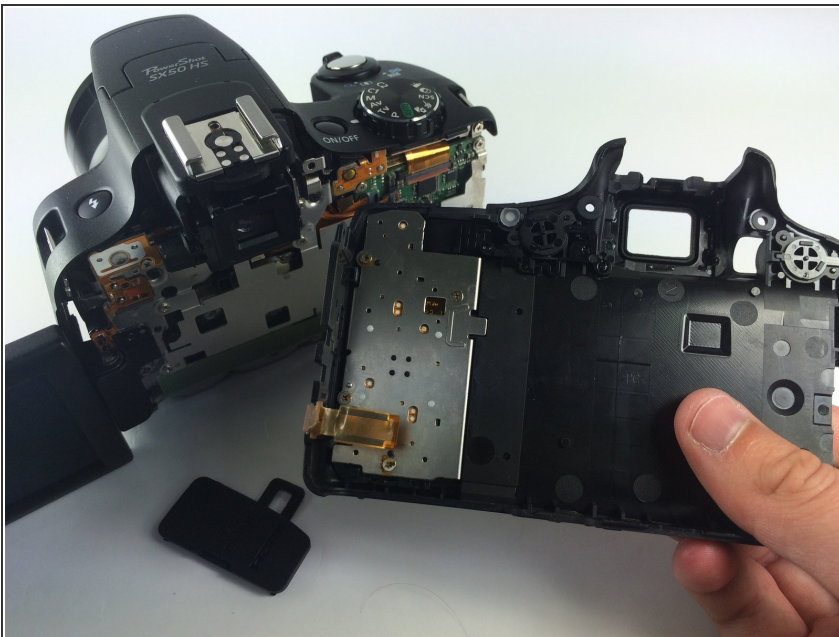
Step 8



- Find the orange wire ribbon attaching the back encasement to the I/O board in the lower right-hand corner of the camera (lens facing away).
- Carefully lift up the brown clip holding the wire ribbon in place and pull the ribbon out of the clasp with your fingers or tweezers.

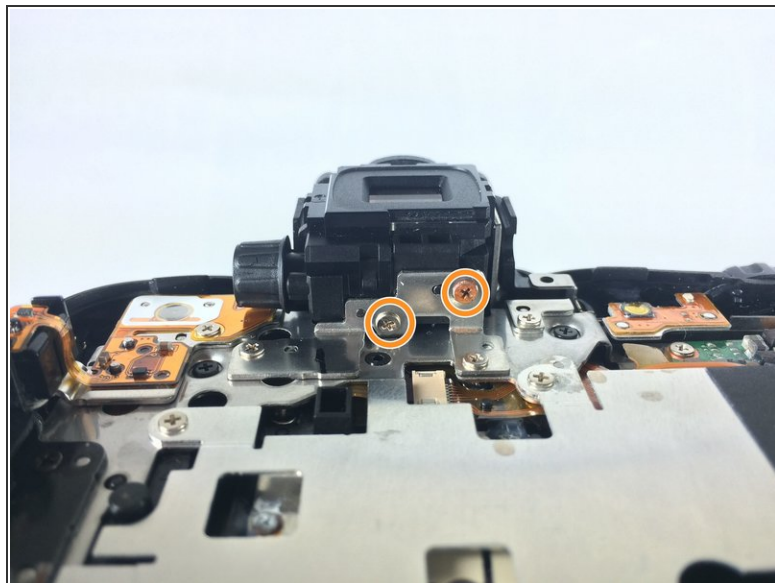
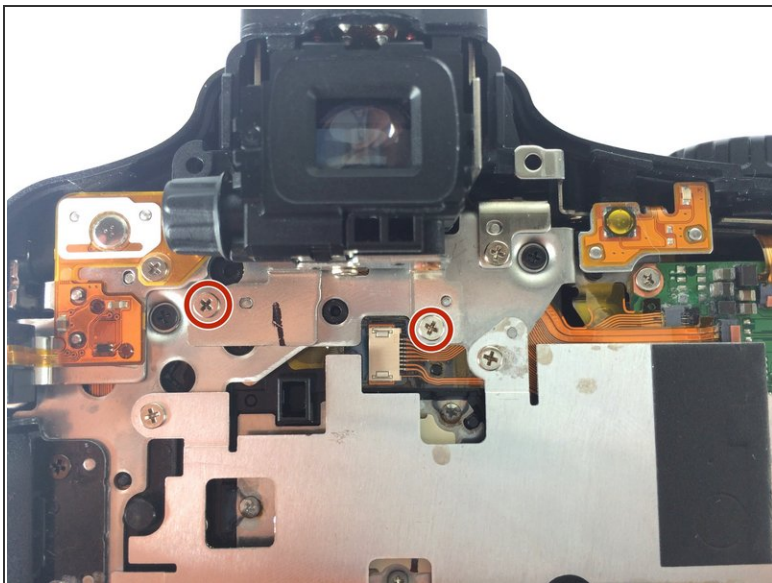
⚠ Be cautious when removing the wire ribbon; it is very delicate.

Step 9



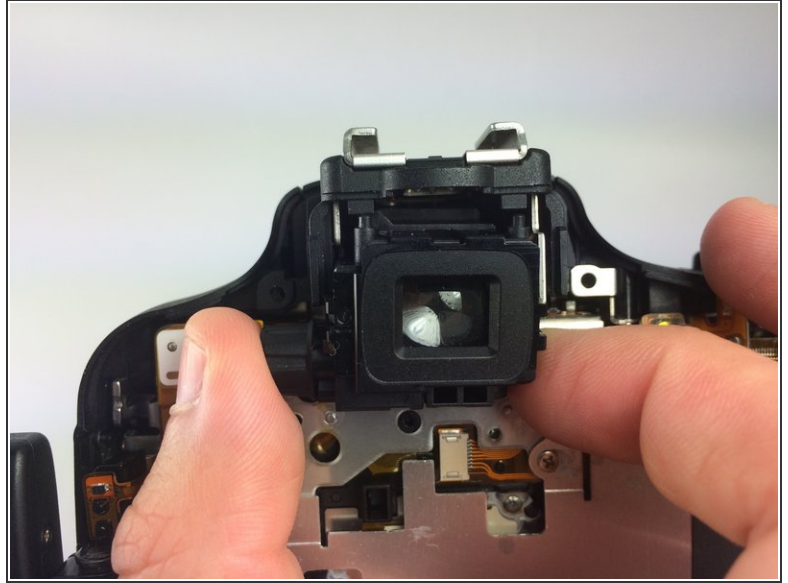
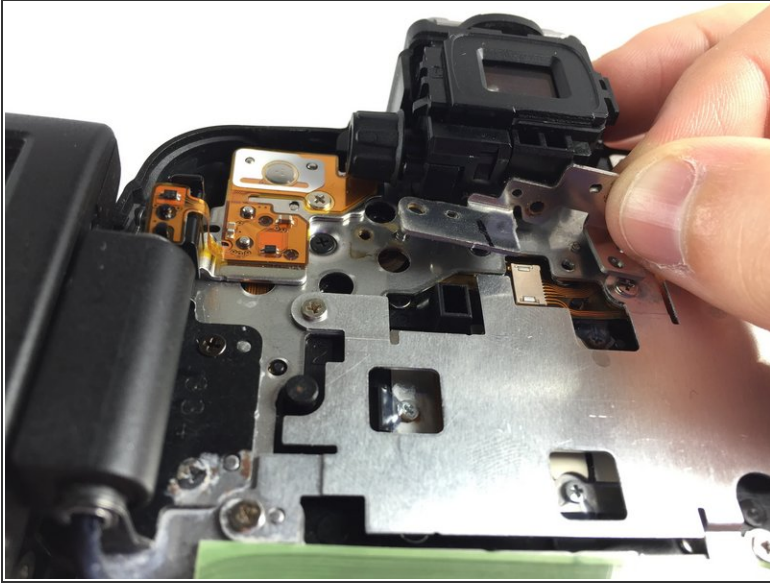
- Now you can completely separate the back encasement from the rest of the camera.

Step 10 — Eyepiece



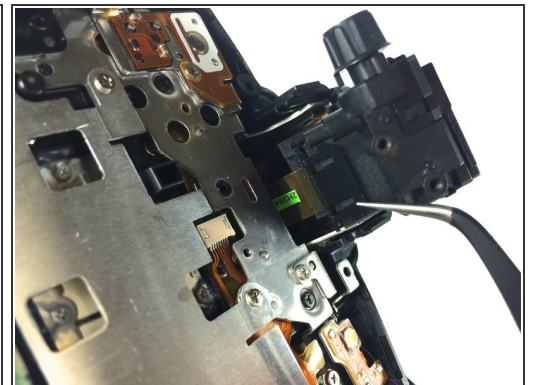
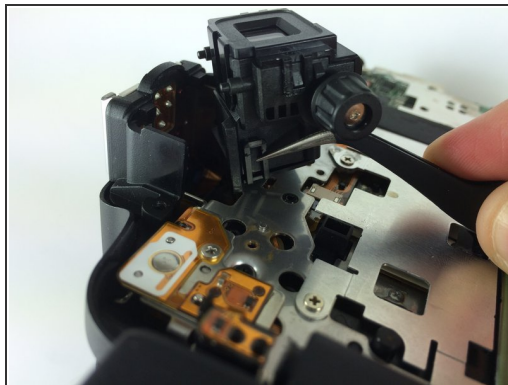
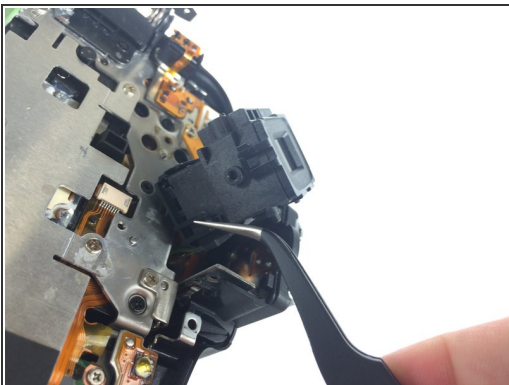
- Remove the two #000 Phillips screws, length 2 mm, on the metal panel attaching the eyepiece to the rest of the camera.
- Remove the two #000 Phillips screws, length 3 mm, attaching the metal panel to the eyepiece.

Step 11



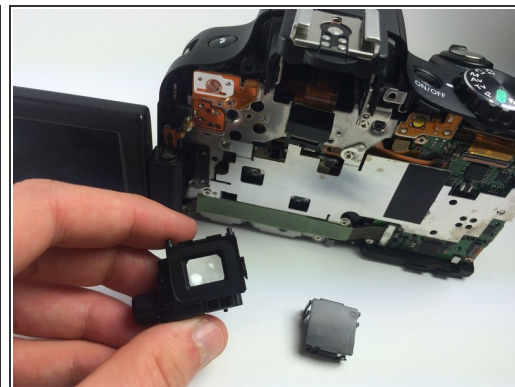
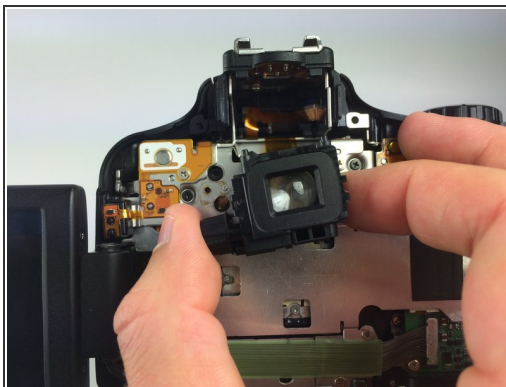
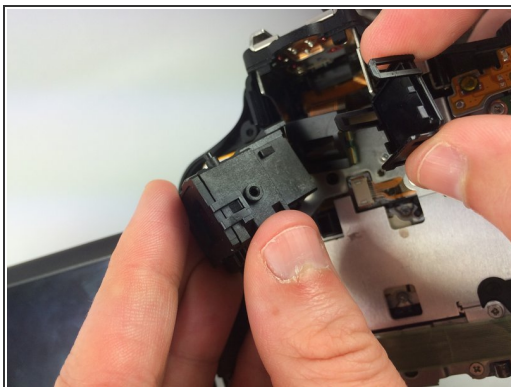
- Use your fingers to carefully remove the metal plate.
 - Carefully remove the eyepiece from the encasing around it. There is a wire ribbon that will still be attaching it to the camera.
- ⚠ Do not pull the eyepiece out too hard or too fast; the wire ribbon is very delicate.

Step 12



- Using the curved tip tweezers unhook the clasps on the sides of the eyepiece that are holding its back panel in place.
- Using the curved tip tweezers unhook the clasp on the bottom of the eyepiece that is holding its back panel in place.

Step 13



- Remove the back panel of the eyepiece. The viewfinder is inside and is attached to the camera via the orange wire ribbon.
- Now you can completely remove the eyepiece from the camera.

To reassemble your device, follow these instructions in reverse order.