



Canon PowerShot SX50 HS LCD Screen Replacement

This guide will show you how to remove and replace the LCD screen of the PowerShot SX50 HS.

Written By: Megan Rund



INTRODUCTION

Replace the LCD screen of the Canon PowerShot SX50 HS.



TOOLS:

- [iFixit Opening Tools](#) (1)
 - [Tweezers](#) (1)
 - [Phillips #000 Screwdriver](#) (1)
-

Step 1 — Battery



- Locate the battery compartment on the bottom of the camera.
- Push the latch on the outside of the battery door to the right to get to the battery pack inside.

Step 2



- Pull the brown latch on the inside of the battery door towards your palm (to the left). The battery pack should pop out (battery not pictured).
- Now remove the battery pack from the camera with your fingers.

Step 3 — Rear Case



- Remove the two Phillips #000 screws, length 5 mm, on either side of the viewfinder.
- Remove the one Phillips #000 screw, length 4 mm, on the bottom, closer to the back side of the camera.

Step 4



- Remove the two Phillips #000 screws, length 3 mm, on the left side of camera.
- Remove the Phillips #000 screw, length 4 mm, located between the two 3 mm screws.
- Remove the two Phillips #000 screws, length 4 mm, on the bottom left corner of the camera.

Step 5



- Find the "A/V Out Digital" charging station and lift up the flap.
- Remove the two Phillips #000 screws, length 5 mm, that are under the "A/V Out Digital" flap.
- Remove the one Phillips #000 screw, length 5 mm, that is outside the "A/V Out Digital" flap.

Step 6



- Use the plastic opening tool to carefully start lifting up the camera's left-side panel. Then use your fingers to pry off the rest.

Step 7



- Make sure the LCD screen panel, the battery compartment door, and the 'A/V Out Digital' flap are all open.
- Using your fingers, carefully pry off the back encasement (you may need to use a plastic opening tool to help you).

⚠ Do not remove the back casing too far or too quickly. There is a wire ribbon attaching the back encasement to the motherboard that is very delicate.

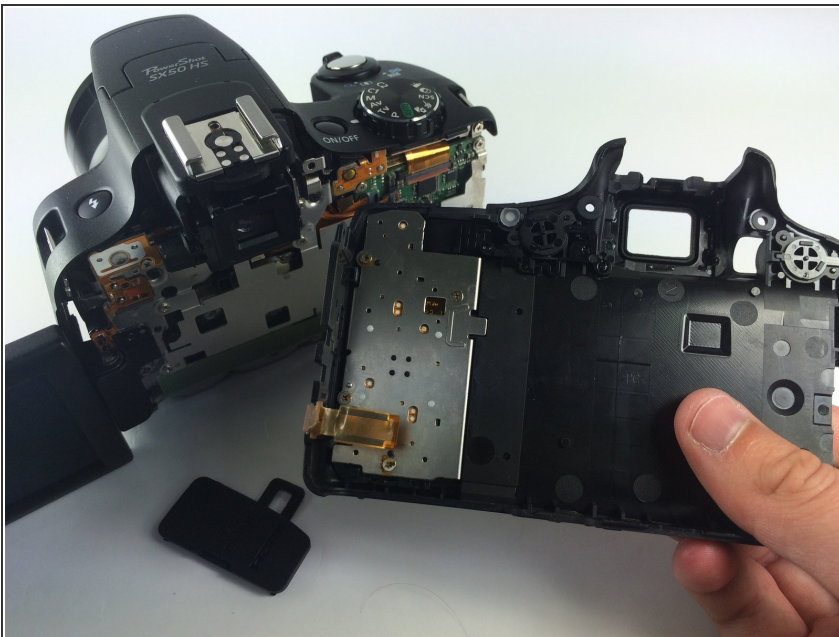
Step 8



- Find the orange wire ribbon attaching the back encasement to the I/O board in the lower right-hand corner of the camera (lens facing away).
- Carefully lift up the brown clip holding the wire ribbon in place and pull the ribbon out of the clasp with your fingers or tweezers.

⚠ Be cautious when removing the wire ribbon; it is very delicate.

Step 9



- Now you can completely separate the back encasement from the rest of the camera.

Step 10 — LCD Screen



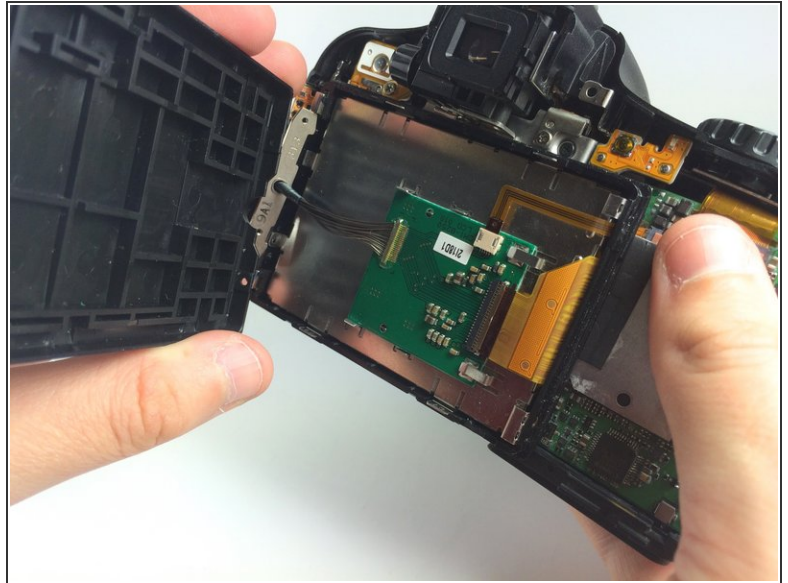
- Open the LCD screen panel.
- Remove the two Phillips #000 screws, length 3 mm, on the outside edge of the LCD panel.

Step 11



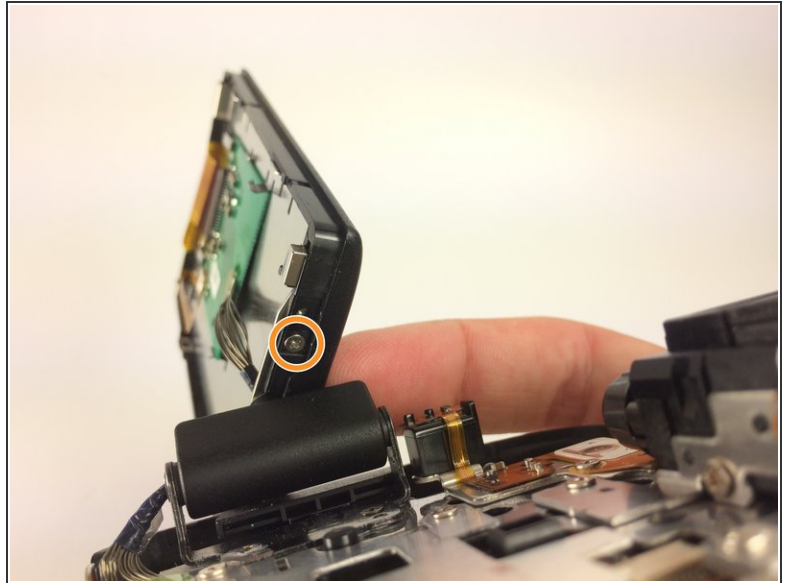
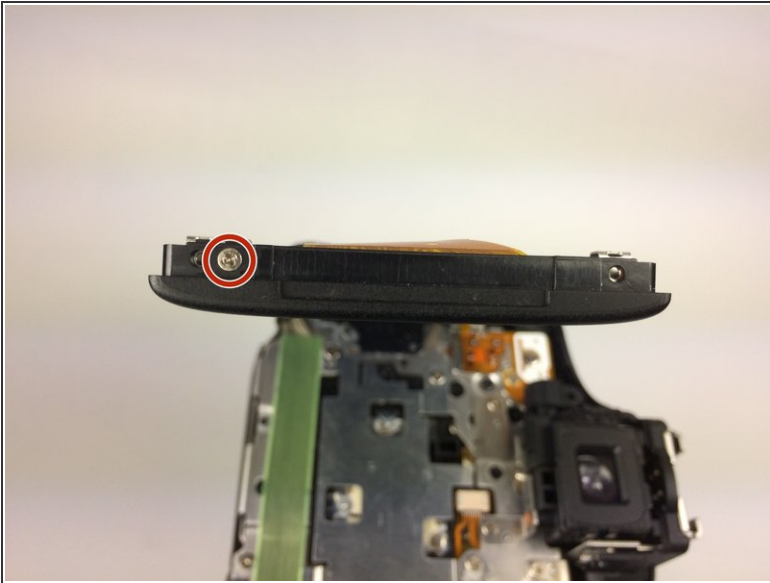
- Remove the Phillips #000 screws, length 3 mm, on the inside edge of the LCD screen panel.

Step 12



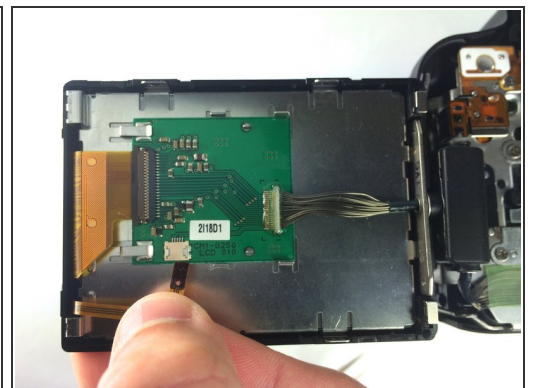
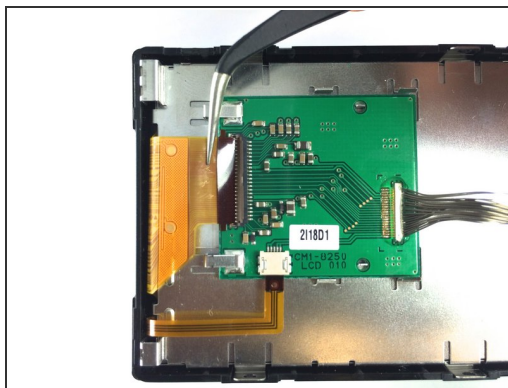
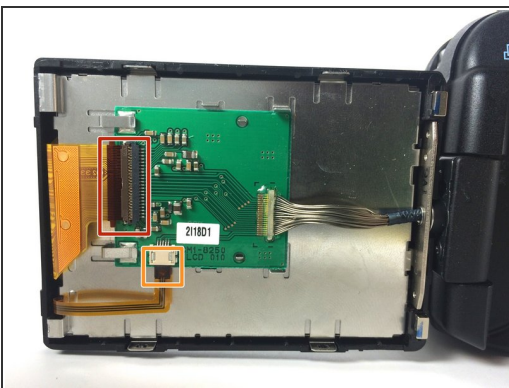
- Use one of the plastic opening tools to pry off the back covering of the LCD screen.
- Use your fingers to carefully remove the back covering.

Step 13




- Remove the one Phillips #000 screw, length 2 mm, on the outside edge of the inner encasement of the LCD screen.
- Rotate the screen counterclockwise as shown and remove the one Phillips #000 screw, length 2 mm, on the inside edge of the inner encasement of the LCD screen.

Step 14



- To detach the larger wire ribbon, lift the release latch on the connector of the circuit board. Remove the wire ribbon with tweezers.
- Now remove the smaller wire ribbon by pulling on it firmly but gently.

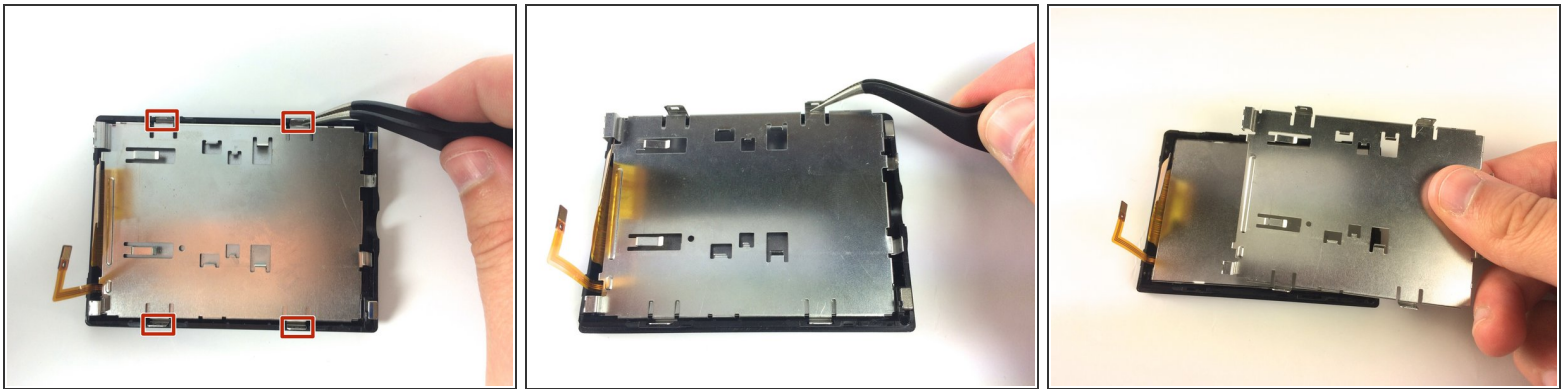
 The wire ribbons are very delicate; be very cautious when detaching them!

Step 15



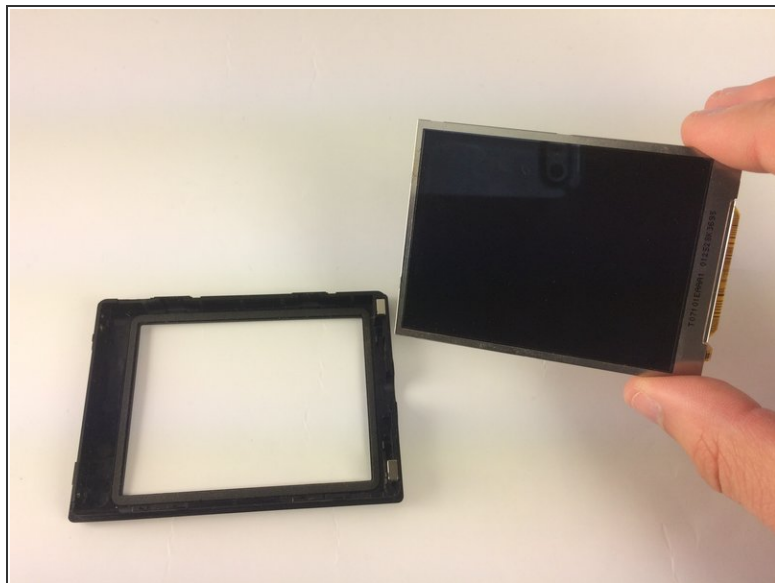
- Use the curved tip tweezers to carefully remove the green circuit board out from under the two clips holding it in place. Then you can remove it completely with your fingers.
- Now you can separate the LCD screen panel from the rest of the camera.

Step 16



- Use the curved tip tweezers to detach the metal plate that holds the screen in place. There are four latches you will need to detach.
- Remove the metal plate from the rest of the LCD screen panel.

Step 17



- Use your fingers to remove the LCD screen from its encasing. It comes out very easily.

To reassemble your device, follow these instructions in reverse order.