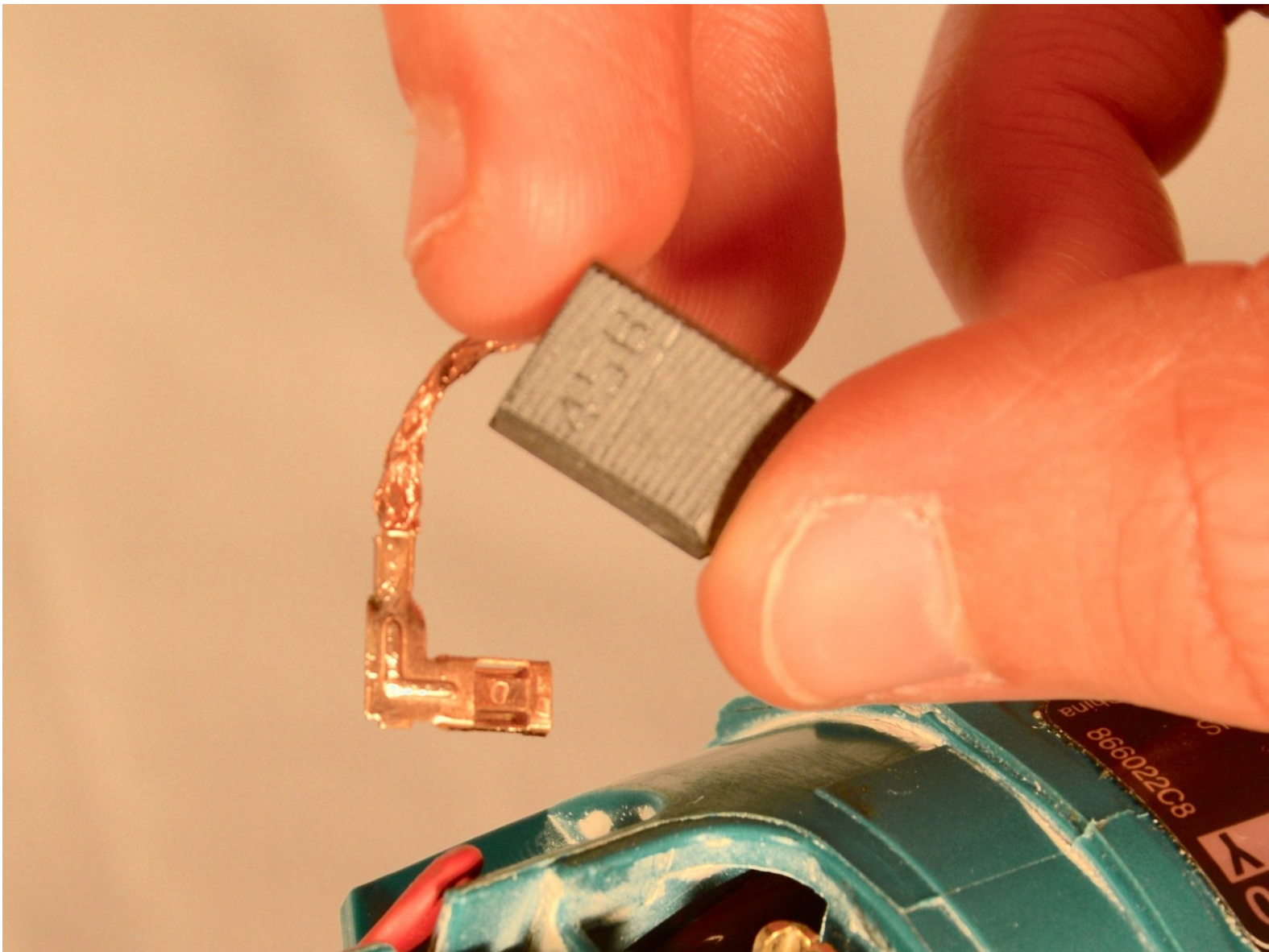




Makita GA4030K Carbon Brush Replacement

Carbon brushes are one of the most critical, yet delicate, parts of an angle grinder. These instructions will guide you through replacing the carbon brushes.

Written By: Nyssa Backes



INTRODUCTION

This guide will show you how to quickly and easily replace the carbon brushes in a Makita GA4030k angle grinder.



TOOLS:

- [Phillips #2 Screwdriver](#) (1)
 - [Spudger](#) (1)
 - [Small Needle Nose Pliers](#) (1)
-

Step 1 — Back Cover



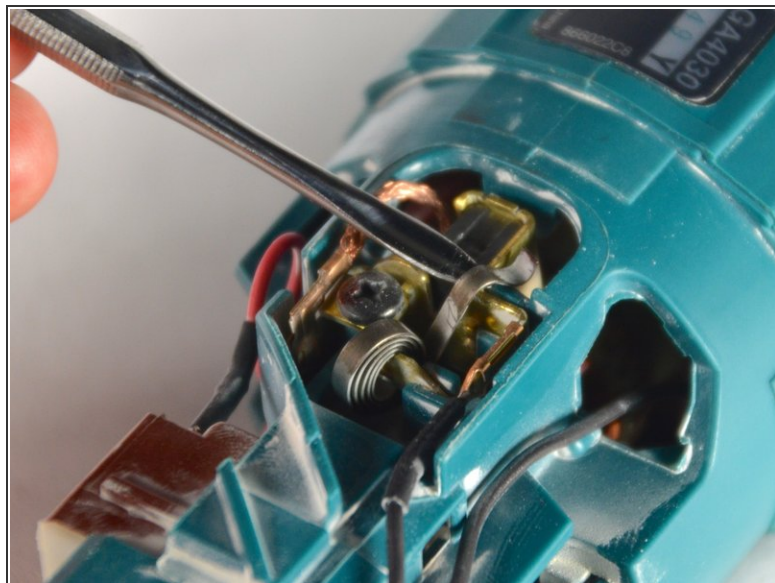
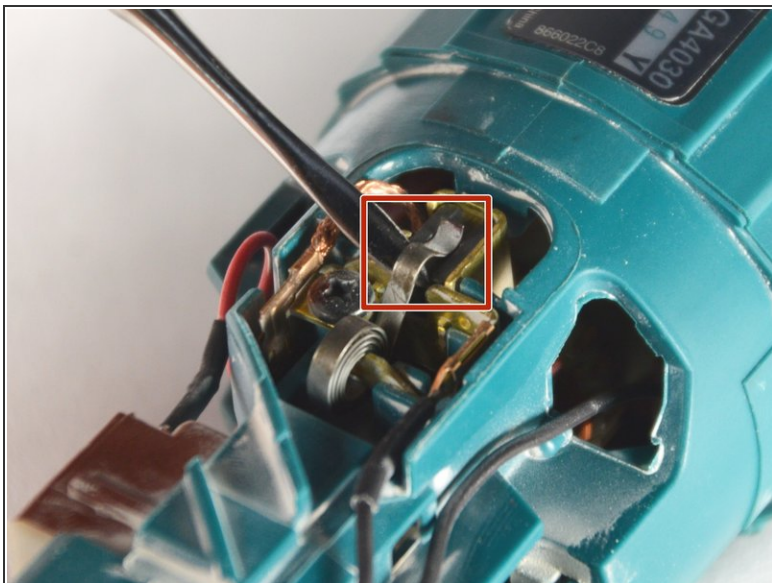
- Unscrew the 20 mm tapping screw using a Philips #02 screwdriver.

Step 2



- Slide the back cover down the power cable.

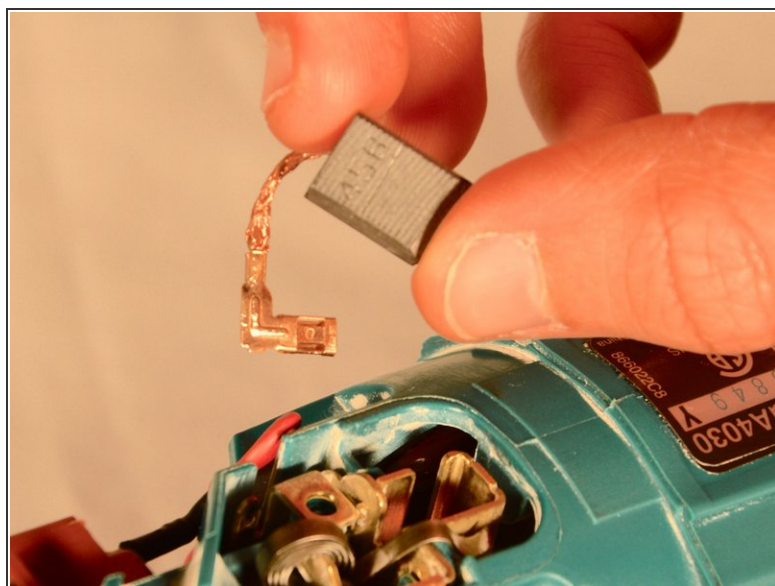
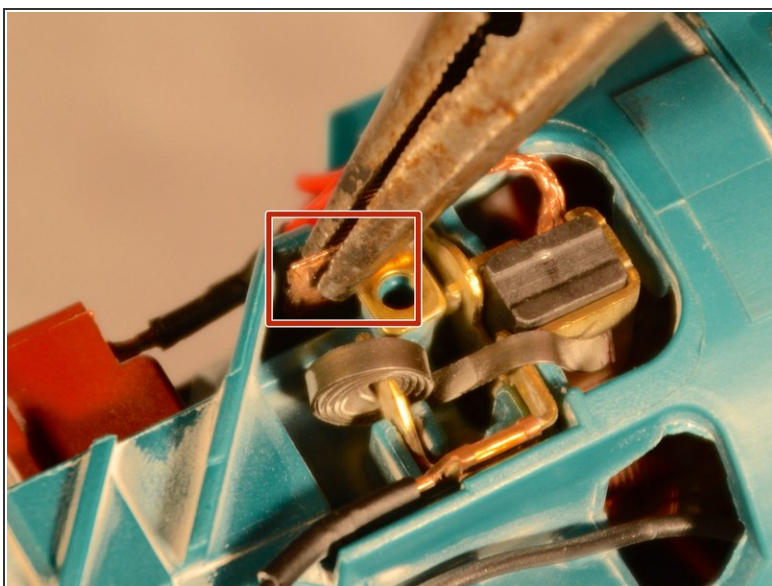
Step 3 — Carbon Brushes



- Use a spudger to move the springs (holding the brushes) to the side.

ⓘ There are two brushes, one on each side.

Step 4



- Use needle nose pliers to gently pull out the carbon brushes by their crimped connectors.

To reassemble your device, follow these instructions in reverse order.