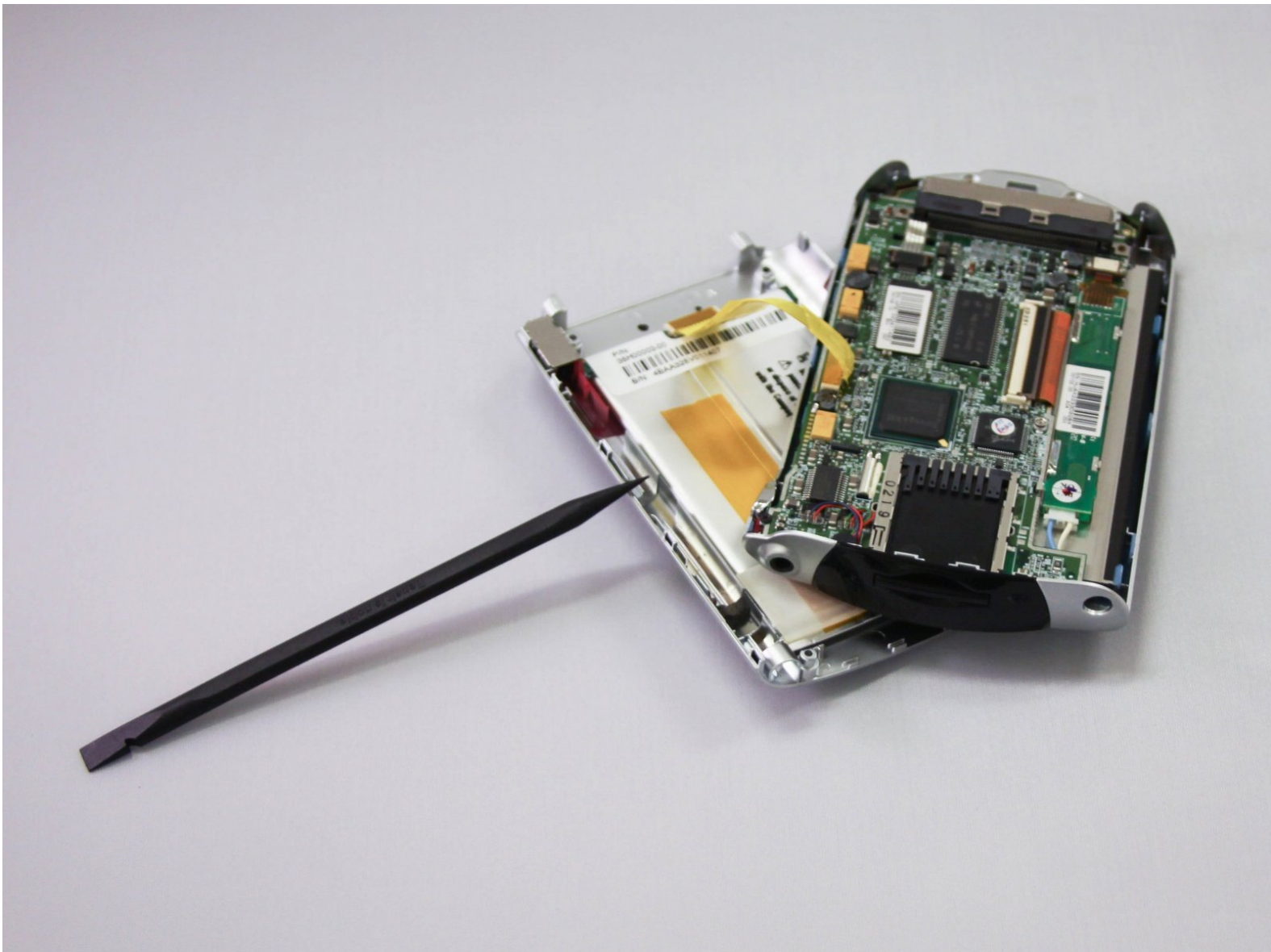




HP iPAQ H3850 Battery Replacement

Following the given steps will aid you in replacing the battery in the HP iPAQ H3850.

Written By: Nick Hilzendeger



INTRODUCTION

This guide will outline the battery replacement process



TOOLS:

- [Essential Electronics Toolkit](#) (1)
 - [iOpener](#) (1)
-

Step 1 — Battery



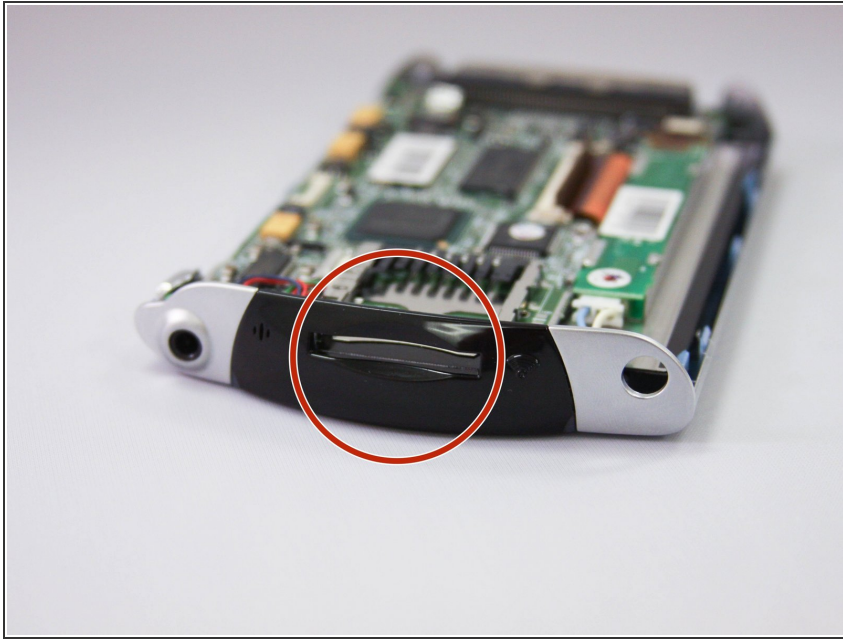
- To begin the disassembly of the device, place it on a flat surface with the screen facing down.

Step 2



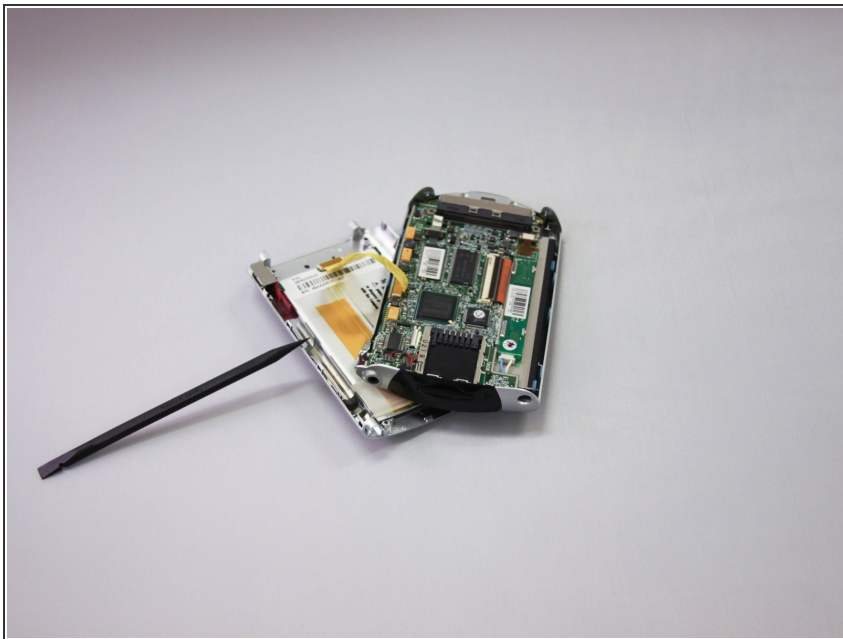
- Remove the four screws found on the back cover of the device.

Step 3



- Remove SD card on top of device by pushing and then releasing.

Step 4



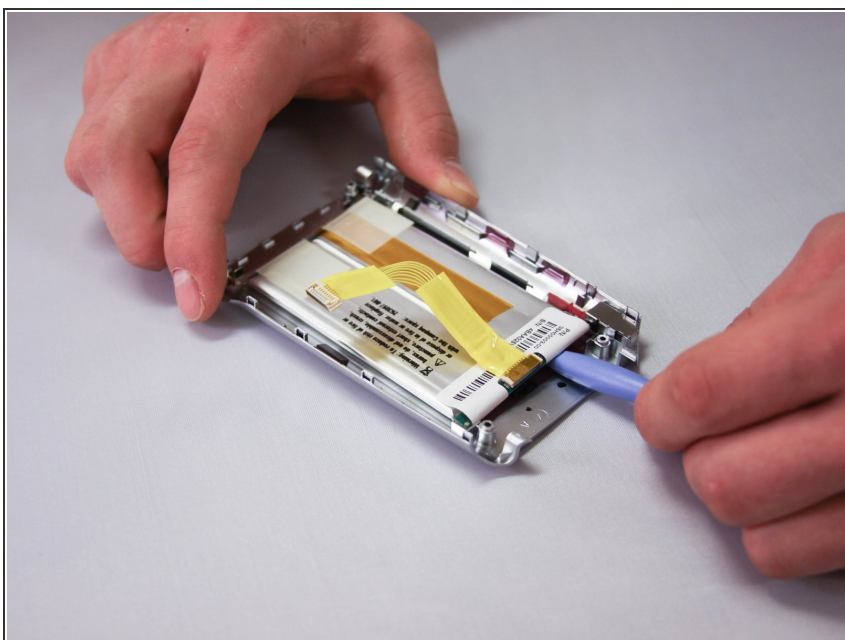
- Carefully remove the back cover using the spudger against the grooves along the sides of the iPAQ.

Step 5



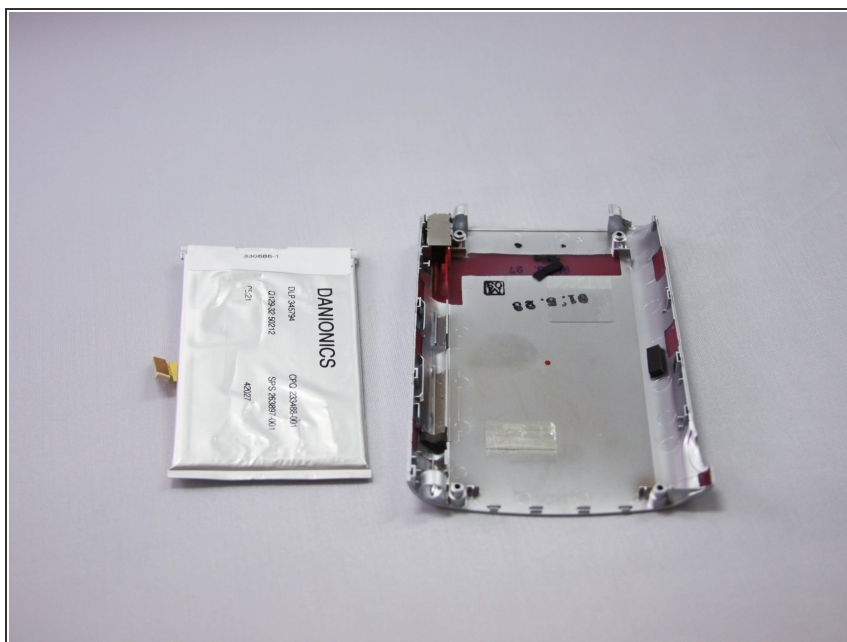
- Using the plastic opening tool, carefully detach the yellow ribbon from the connector pins to separate the device into two halves.

Step 6



- Using a heating pad or blow dryer, heat the back of cover until warm.
- The glue holding in battery should now be loosened.
- Use plastic opening tool to remove battery from the back cover.

Step 7



- Once the old battery is removed, scrape off the old adhesive from the device backing with the prying tool.
- To attach the new battery, apply an adhesive to each corner of the backing where the battery sits and place the device into the backing.
- Allow the adhesive to set for half an hour

To reassemble your device, follow these instructions in reverse order.