



# Polaroid Automatic 100 Spread Roll Replacement

The spread roll spring is a vital part of the...

Written By: Katie Miller



# INTRODUCTION

The spread roll spring is a vital part of the polaroid that ensures that your developing photo will exit the camera once your photo is taken.

---

## TOOLS:

[iFixit Opening Tool](#) (1)

[6-in-1 Screwdriver](#) (1)

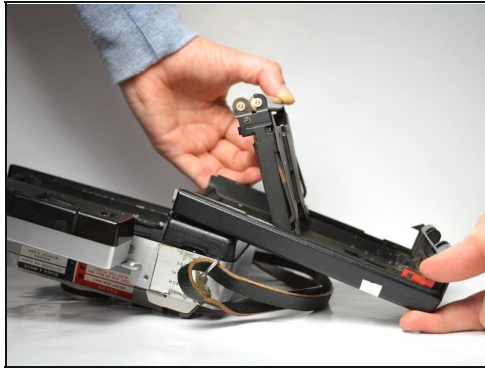
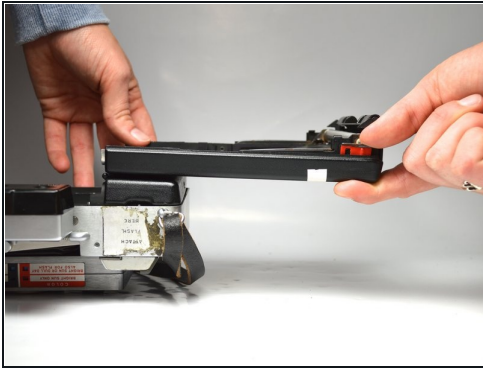
---

### Step 1 — Spread Roll



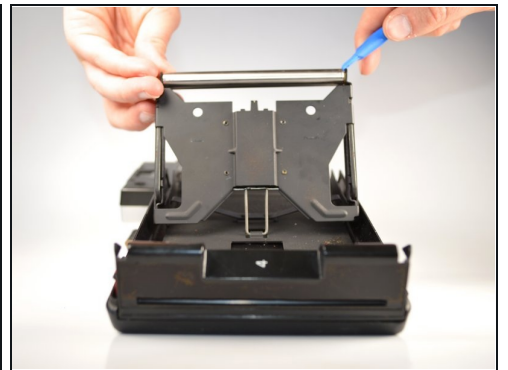
- Push the lever on the bottom of the camera towards the left.
- Open the rear door of the camera.

## Step 2



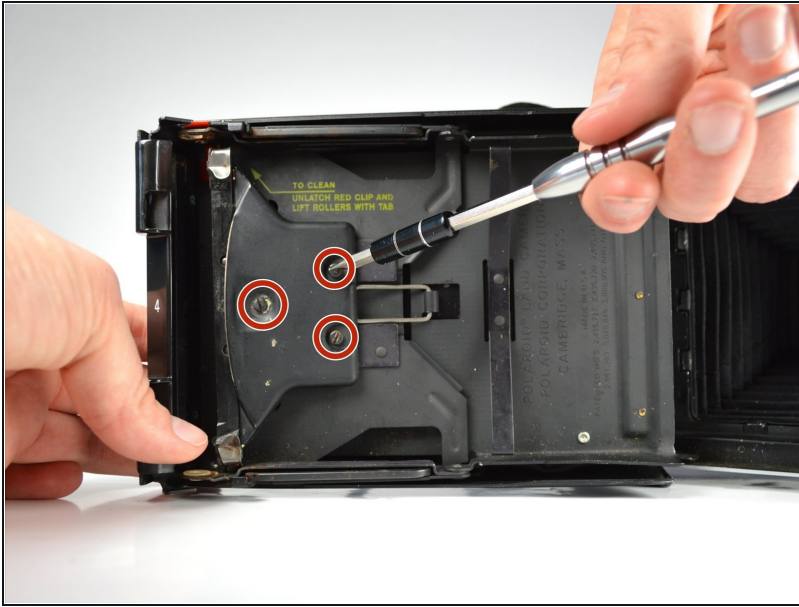
- Unlatch the red clip on the side.
- Lift the rollers up.
- Position the camera with the back cover closest to you.

## Step 3



- Remove the rear roll by using the plastic opening tool to take it off the metal frame.
- Then remove the front roll by pushing away from you with the plastic opening tool.

## Step 4



- Unscrew the three 2.5 mm screws (attached to the metal plate) with a [3.0 flathead](#) screwdriver. Then take off the metal plate.

## Step 5



- Pull the support rod out.

---

To reassemble your device, follow these instructions in reverse order.