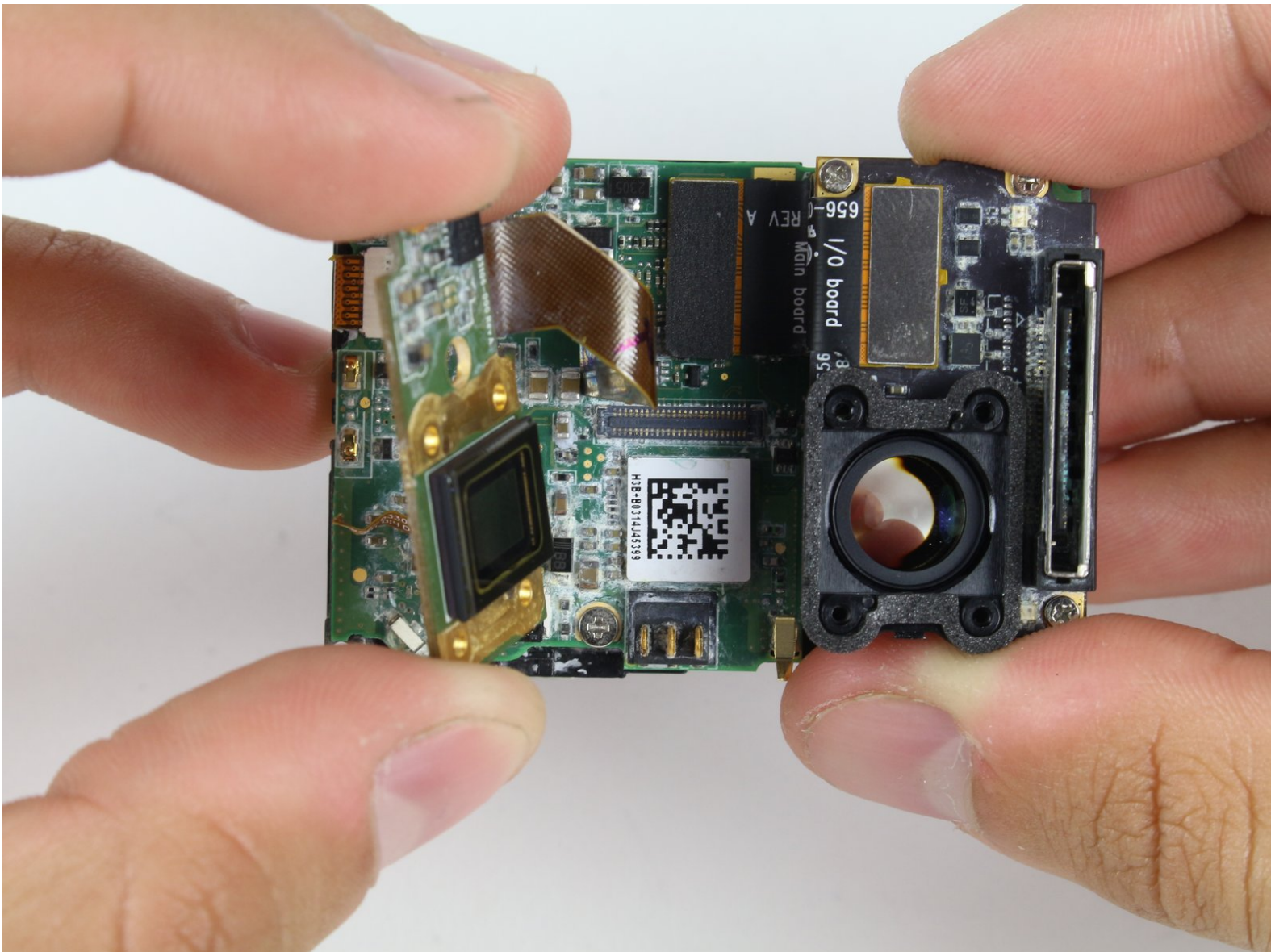




# GoPro Hero3+ Black Edition Image Sensor Replacement

Inside the device and behind the lens lies a Sony IMX117 image sensor. The following guide will illustrate the steps to replace this vital component.

Written By: Kyle Rooney



# INTRODUCTION

Can your GoPro no longer capture anything? You try to record your awesomeness and nothing? You may need to replace your image sensor, and this guide will have you filming your latest skydiving adventure in no time!



## TOOLS:

- [Spudger](#) (1)
- [iFixit Opening Tools](#) (1)
- [Phillips #00 Screwdriver](#) (1)



## PARTS:

- [GoPro Hero3 Plus Black Front Panel](#) (1)
- [GoPro Hero3 Plus Black Image Sensor](#) (1)

## Step 1 — Battery



- Pull the tab on the back of the device to release the back cover. It should come right off.
- ⓘ The device pictured does not include the back cover.

## Step 2



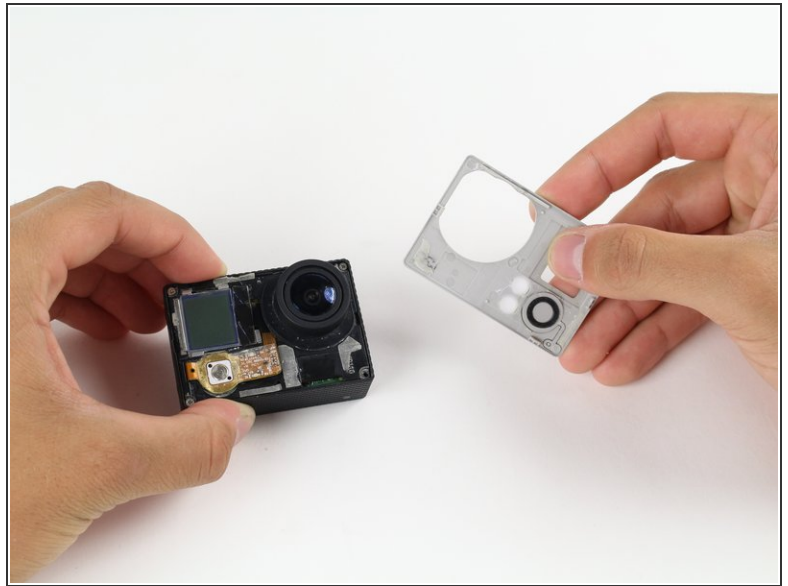
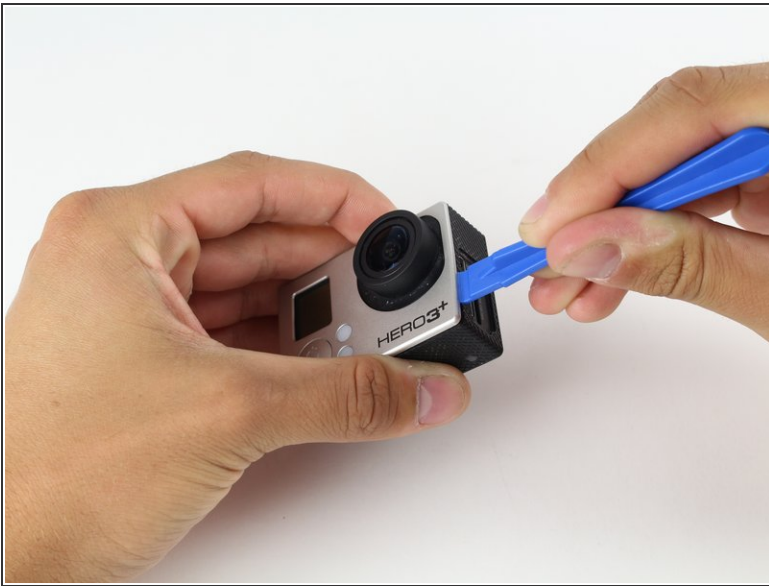
- Use the battery tab to pull the battery out of the device.

### Step 3



- Remove the battery from the slot.

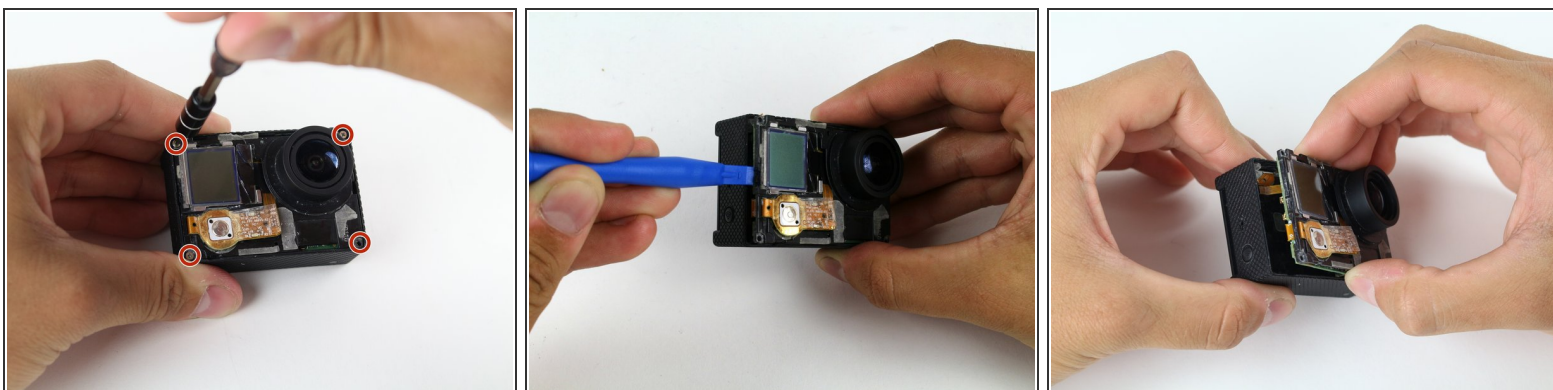
### Step 4 — Front Face Plate



- Using a plastic opening tool, pry the gray, front face plate until it can be removed from the housing.
  - ⚠ To avoid breaking or weakening the tabs on the face plate which hold it in place, alternate the sides from which you pry and check each tab before separating the plate from the body.

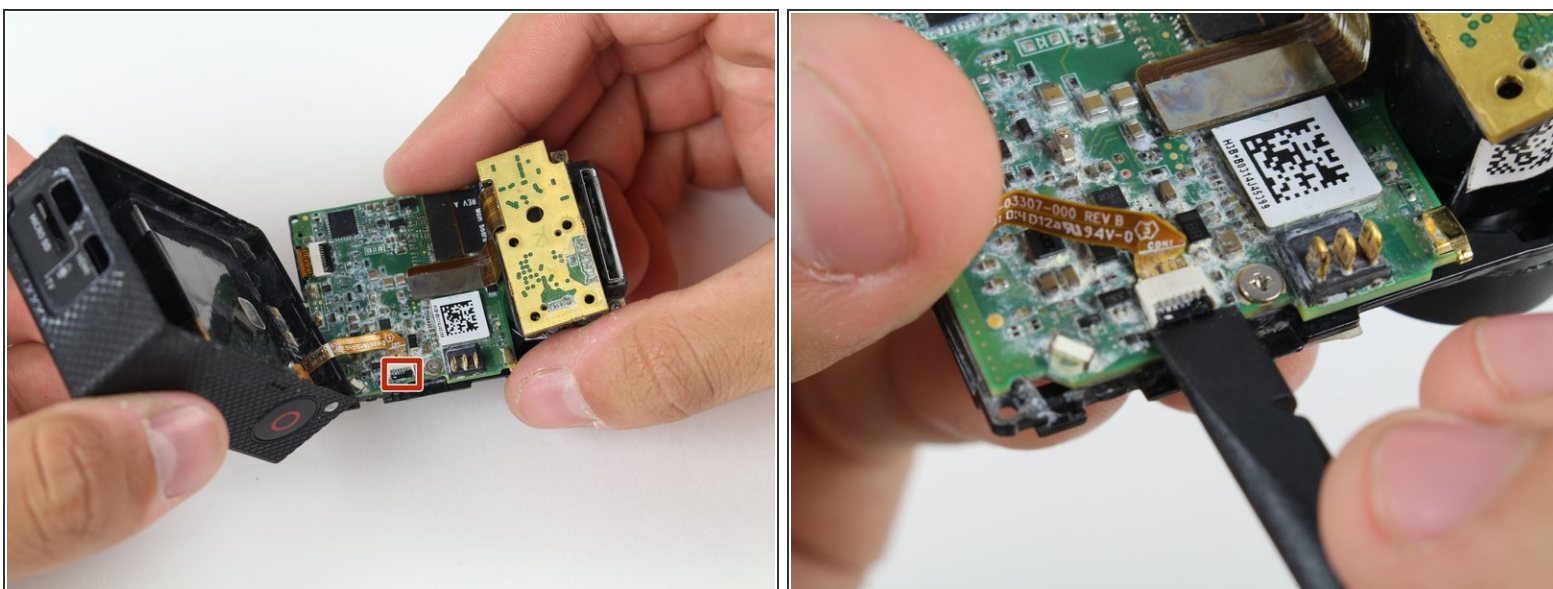


## Step 5 — Image Sensor



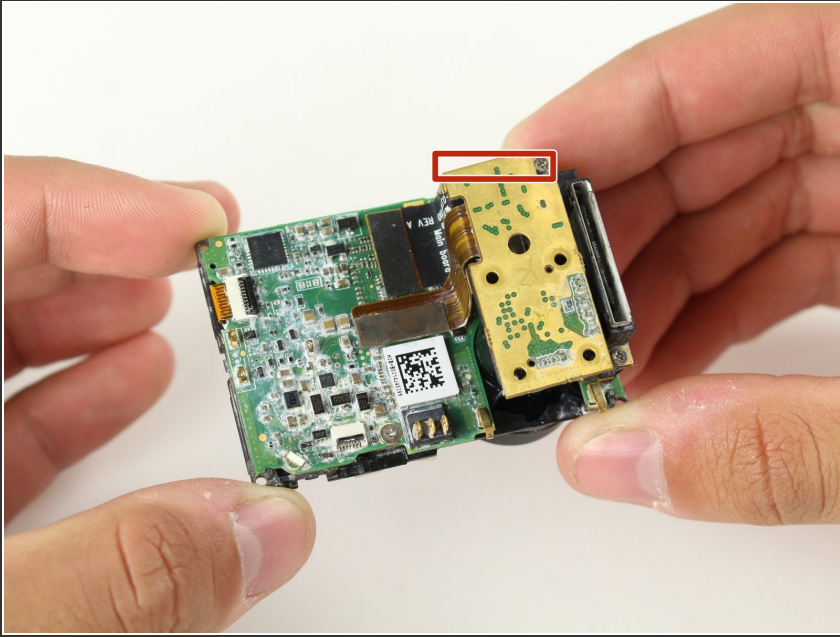
- Using your screwdriver, remove the four 8.1mm PH00 screws securing the motherboard to the black housing unit and set them aside.
- Use the plastic opening tool to help pry the motherboard/midframe up from the main housing. Once you can get a hold of the edge, simply pull the internal components up and out!
- ⚠ Watch out for the ribbon cable connecting the midframe and the motherboard to the GoPro housing. See the next step.

## Step 6



- Remove the ribbon cable connecting the housing to the motherboard by flicking up the black clip with the spudger tool and gently pulling the cable out.

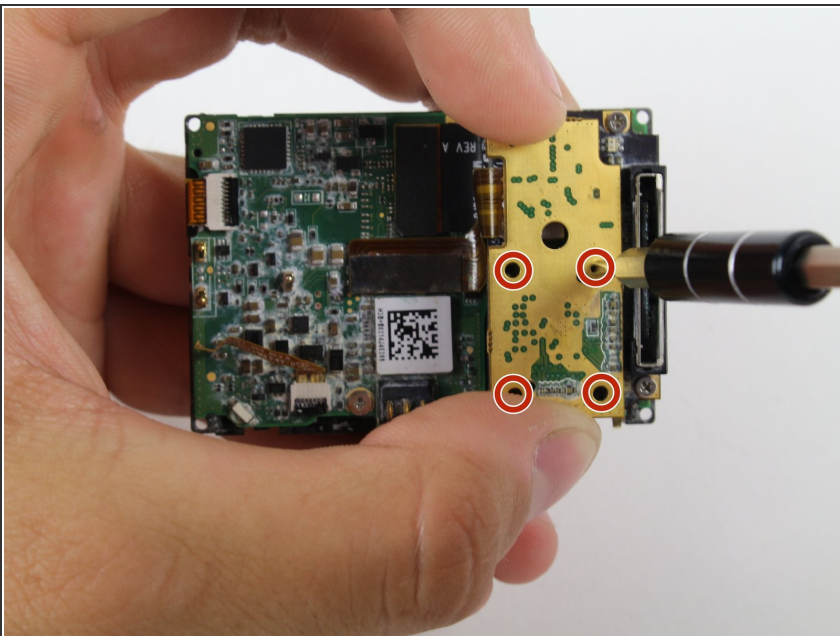
## Step 7



- Once the internal components are removed, take out your handy dandy spudger tool and pry off the piece of tape that holds down the image sensor.

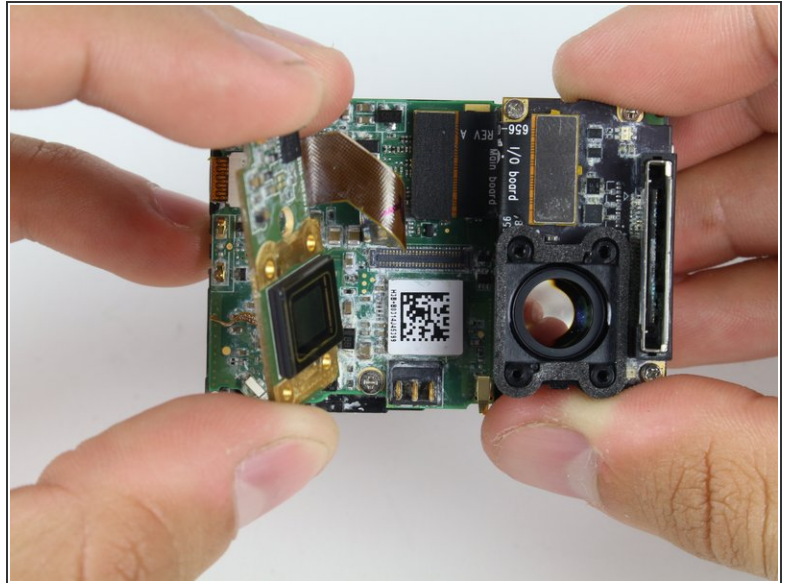
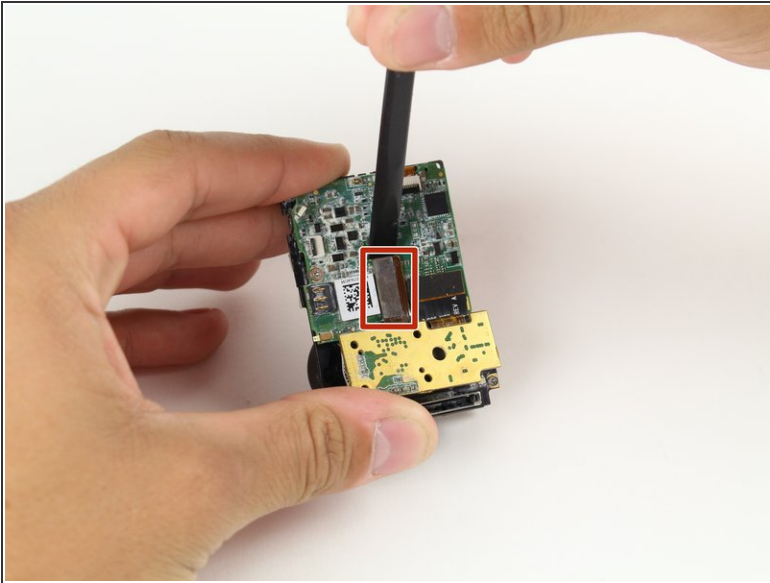
**i** Disclaimer: Our device is just a teardown unit and no longer has the tape. The markup depicts the location where the tape would be located.

## Step 8



- Using your screwdriver, remove the four PH00 screws securing the image sensor to the motherboard.
- i** Disclaimer: The unit used for this guide did not include these screws. Set them aside so you do not mix them up with the previously removed screws.

## Step 9



- Using the spudger tool, pry off the connector ribbon from the motherboard (don't worry it comes off pretty easily).
- Remove the image sensor from the motherboard assembly.

To reassemble your device, follow these instructions in reverse order.