



# Sony CPF-IP001 Power Plug Replacement

Written By: Mike Bolton



---

## TOOLS:

Phillips #2 Screwdriver (1)

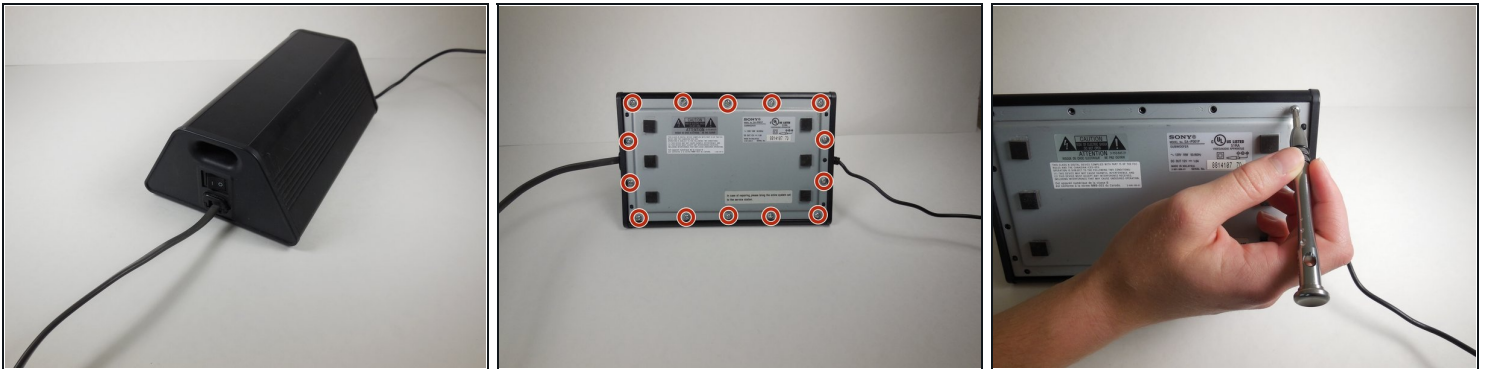
Metal Spudger (1)

iFixit Opening Tool (1)

Tweezers (1)

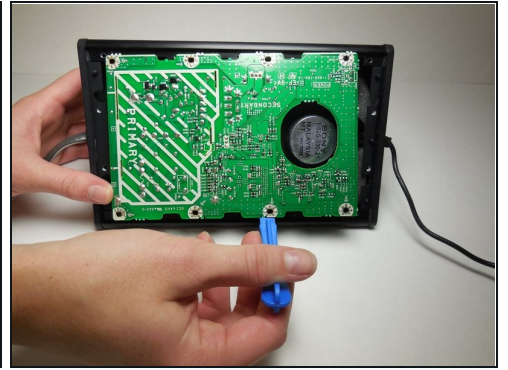
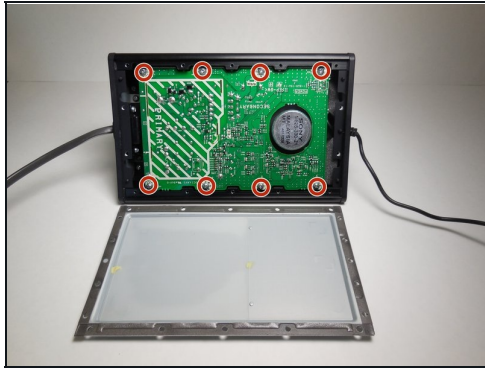
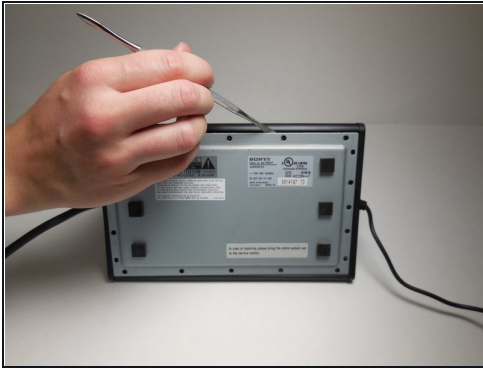
---

### Step 1 — Power Plug



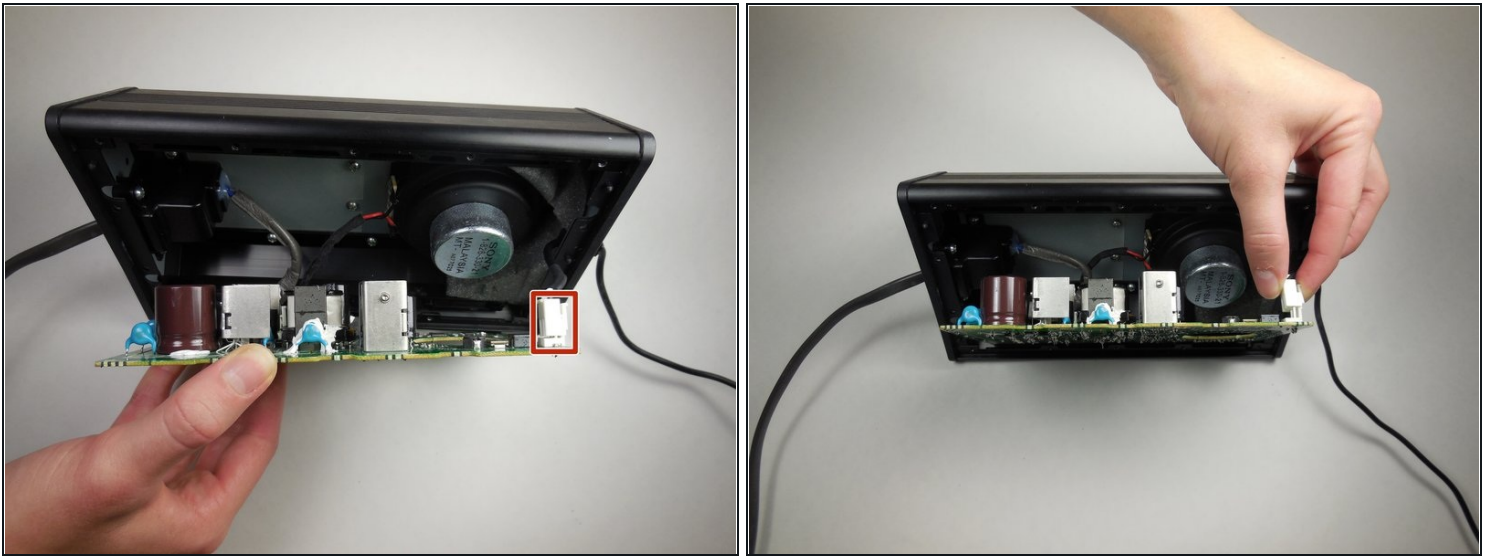
- The Sony Cradle Audio System will have 14 XXXX type of screws located on the bottom of the device.
- Using a Phillips #2 screwdriver, remove all 14 screws.

## Step 2



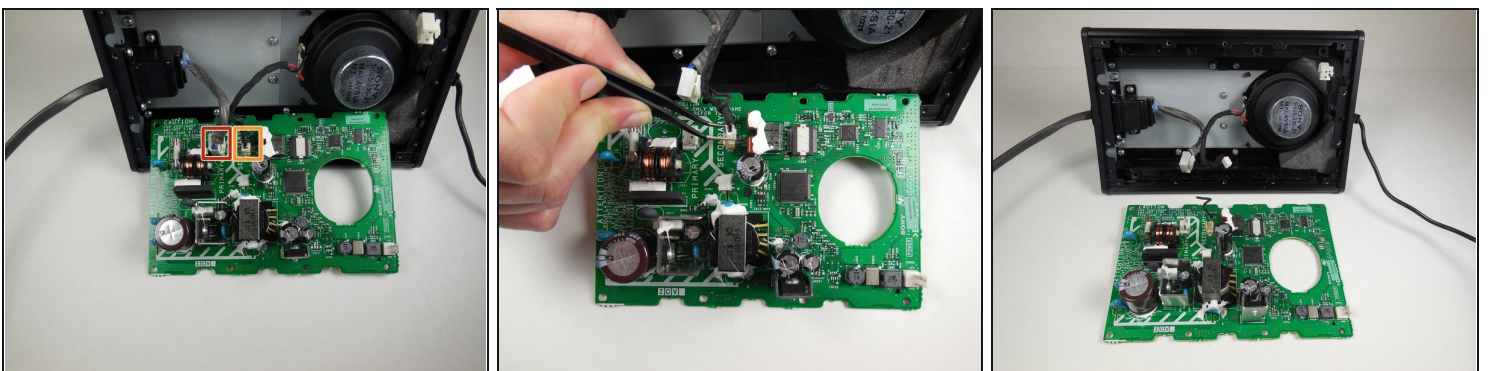
- Once all of the screws are removed, the cover can be taken off using a metal spudger.
  - There are 8 more XXXX screws holding the circuit board in place that will need to be removed.
  - Once the screws are removed, a plastic spudger can be used to carefully move the circuit board away from the device.
- ⚠ There will be 3 wires connected to the opposite side of the circuit board. Be careful not to pull the board out of the device too far and damage these wires.

### Step 3



- The first of the 3 wires can easily be found and is connected to the board via a clip.
- To remove the clip squeeze the tap and pull it out.
- ☑ There are still 2 more wires connected to the board. Now that the first has been removed the other two can be more easily reached.

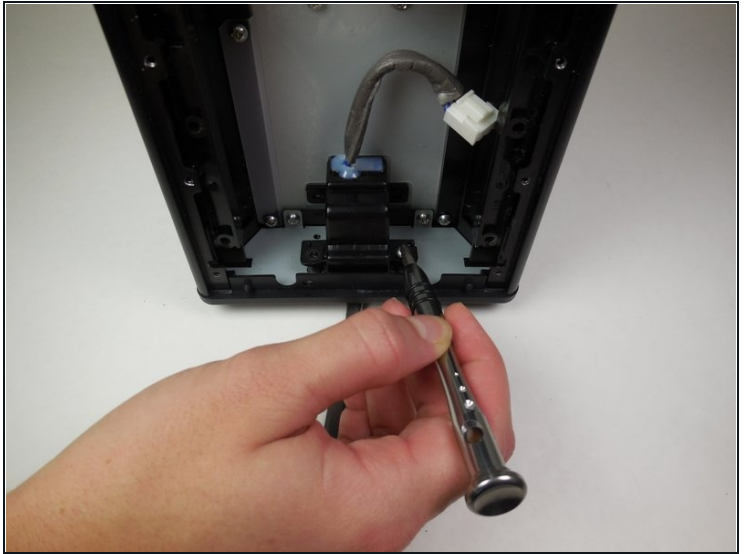
### Step 4



- The wire furthest to the left of the device can be removed in the same way that the first was removed. Simply squeeze the clip and pull out.
- The final wire (furthest to the right) can be carefully removed using a pair of [tweezers](#).
- Now the circuit board has been completely removed from the device and can be set aside.

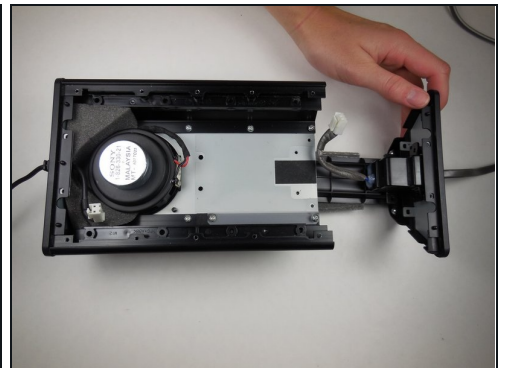
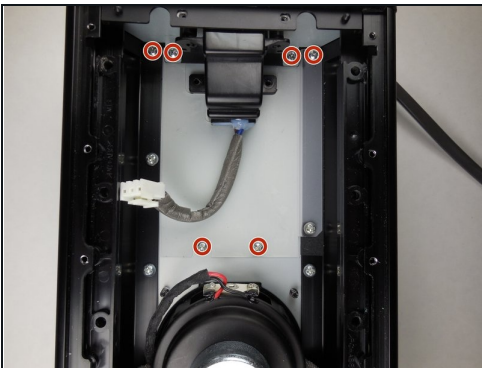


## Step 5



- Next the housing for the power switch and power cord must be removed.
- Remove the 4 XXXX screws using a Phillips #2 screwdriver.

## Step 6



- Remove these next 6 XXXX screws using a Phillips #2 screwdriver.
- The housing is now disconnected from the device and can be pulled out from the side.
- ① The power housing will come out as a whole unit with the subwoofer air tunnel.

## Step 7



- The subwoofer air tunnel can be removed by unscrewing the 2 XXXX screws with a Phillips #2 screwdriver.

---

To reassemble your device, follow these instructions in reverse order.