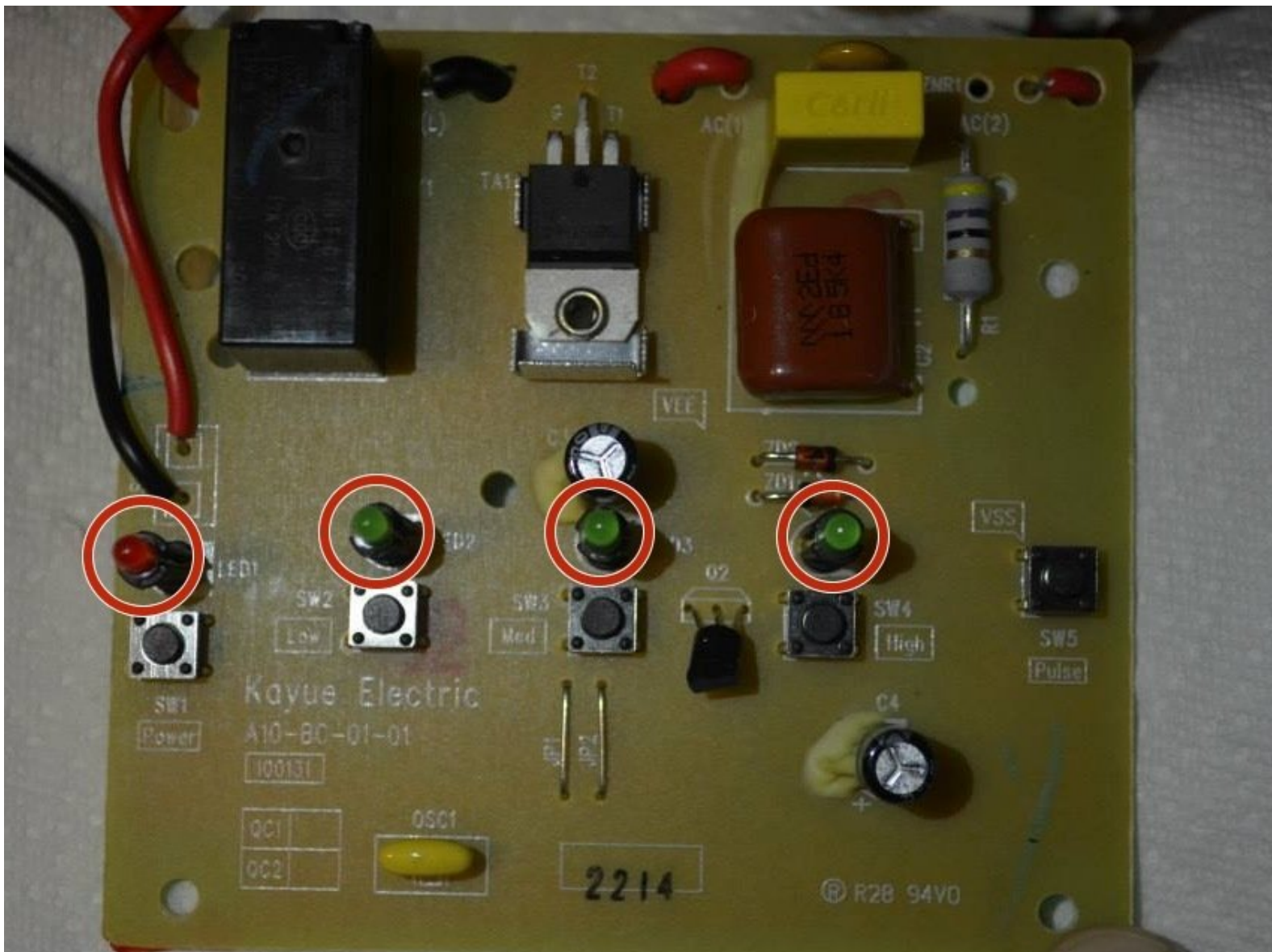




# Ninja NJ600 LED Light Replacement

This replacement guide will show the user how to replace the LED lights on their blender.

Written By: Nathan Delaney



---

## INTRODUCTION

The Ninja NJ600 blender has an LED light display to help the user operate it. This guide will show how to replace one of these lights.



### TOOLS:

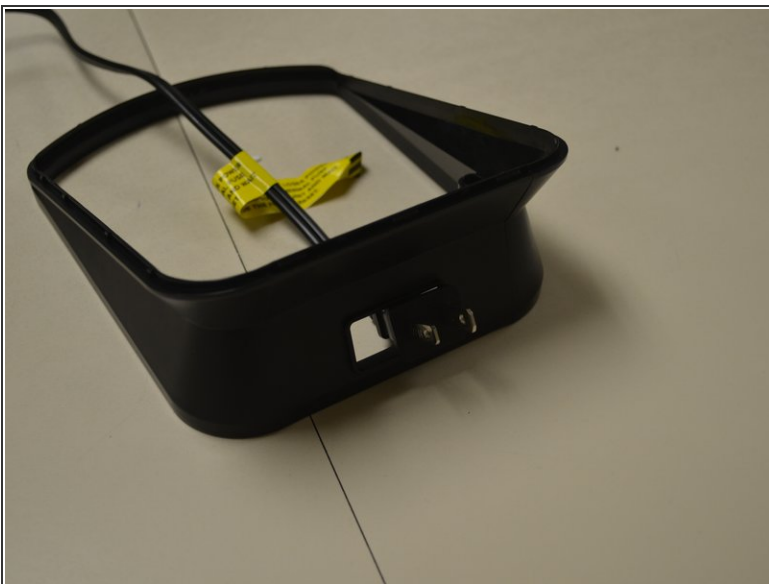
- [Phillips #2 Screwdriver](#) (1)
  - [Soldering Workstation](#) (1)
-

## Step 1 — Blender Base Cover



- Remove the five screws (13mm long, 6mm head diameter) using a Phillips #2 screwdriver.

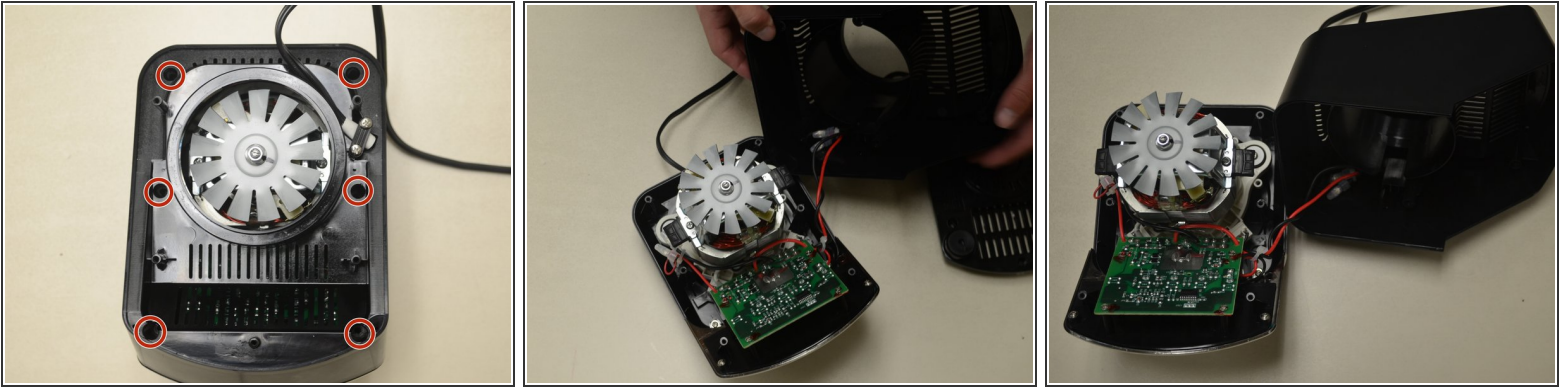
## Step 2



- Without removing any screws, you can pull the 2nd layer free from the base. Do this now and set it down gently next to the base.
- The power cord runs through a hole in the side of this layer. Squeeze the cord and pull it through the hole to separate the layer from the cord.



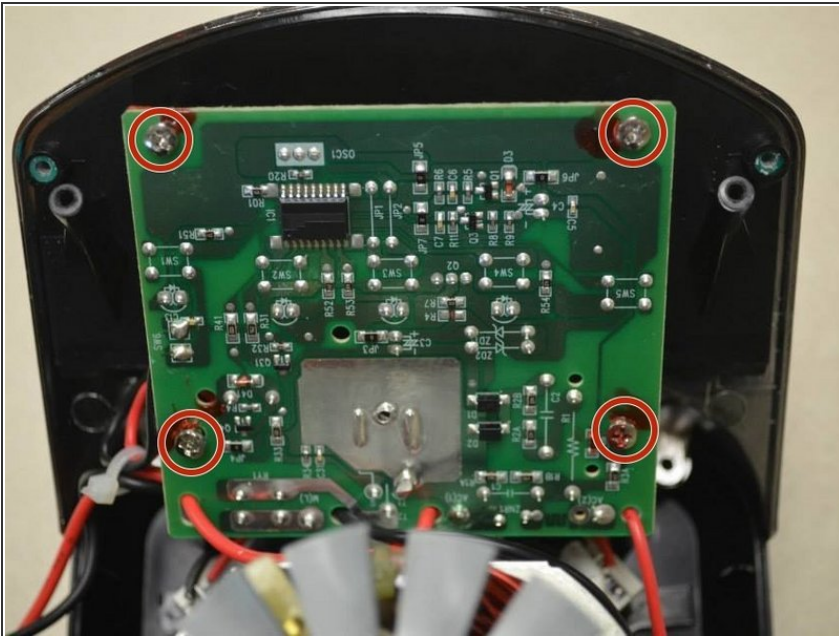
### Step 3



- Using the Phillips #2 screwdriver, remove these six screws (13mm long, 6mm head diameter). Then carefully remove this layer, and rest it next to the blender base.

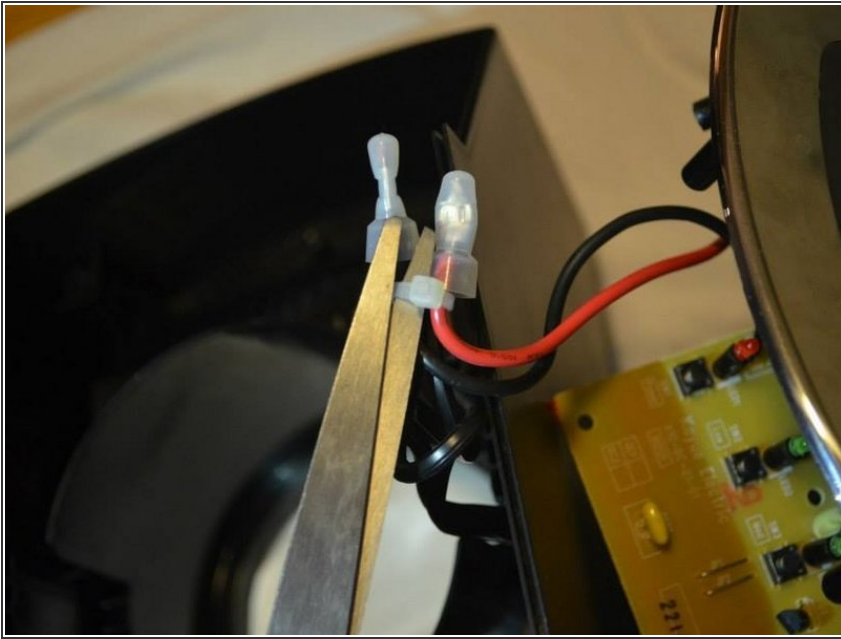
⚠ Be careful not to damage the two wires that are keeping this third layer attached to the base.

### Step 4 — Circuit Board



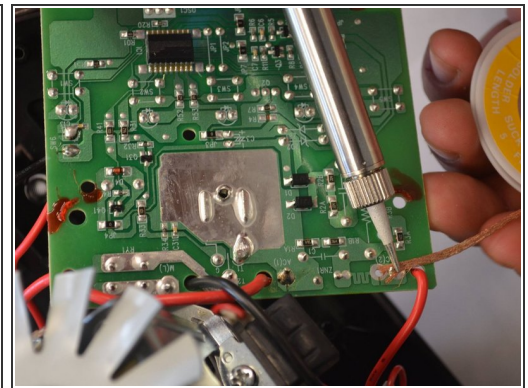
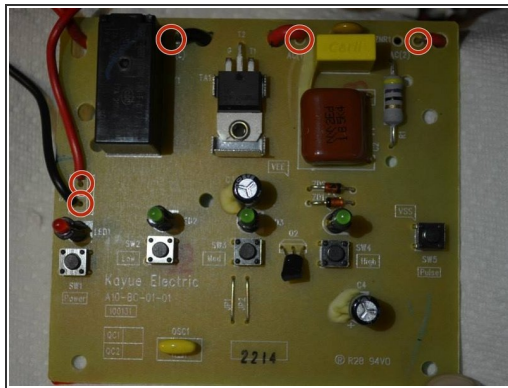
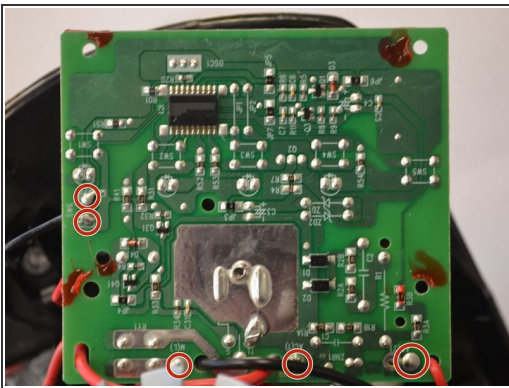
- Remove these four screws (10mm long, 5mm head diameter) using a Phillips #2 screwdriver.
- ⓘ Be careful not to scratch the circuit board with the screwdriver.

## Step 5



- Using a pair of scissors or wire cutters, cut the zip tie holding these wires.
- This will give the circuit board more range of motion.

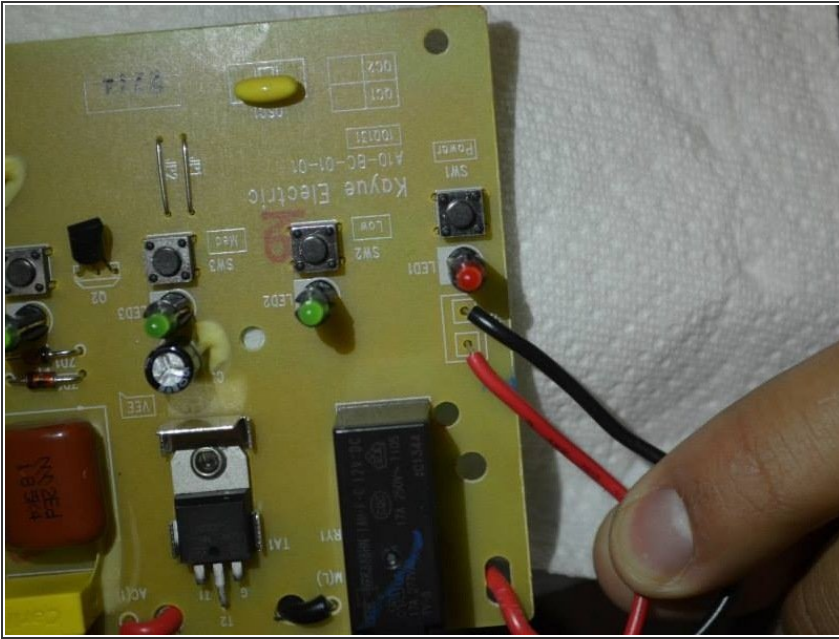
## Step 6



- Desolder the five wires from the solder pads shown.
- If you do not know how to do this, iFixit has a [guide](#) describing the process.
- ⓘ Before you begin to desolder these wires, flip the board over to confirm that you are about to desolder the correct component.
- ⚠ Soldering iron is very hot, use caution when handling

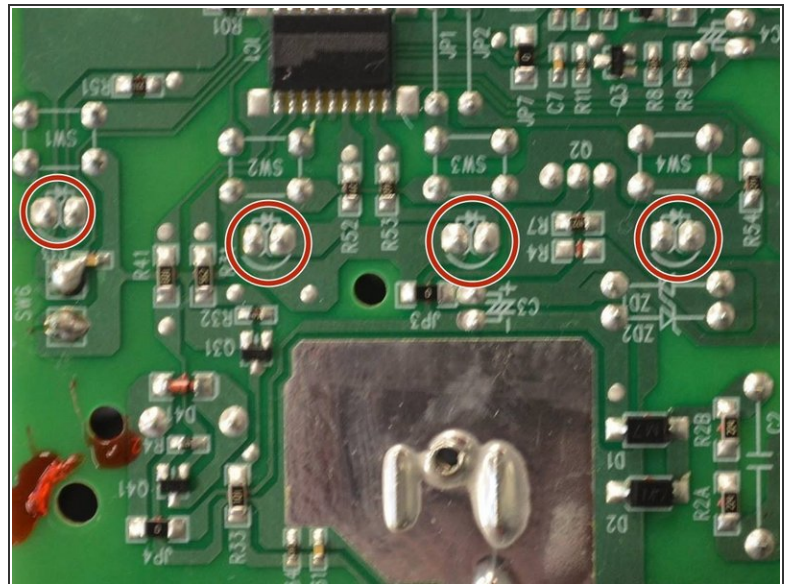
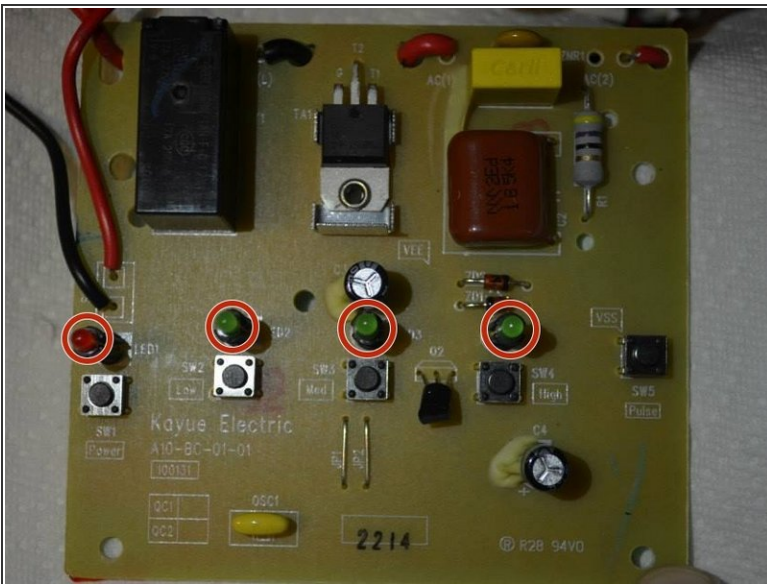


## Step 7



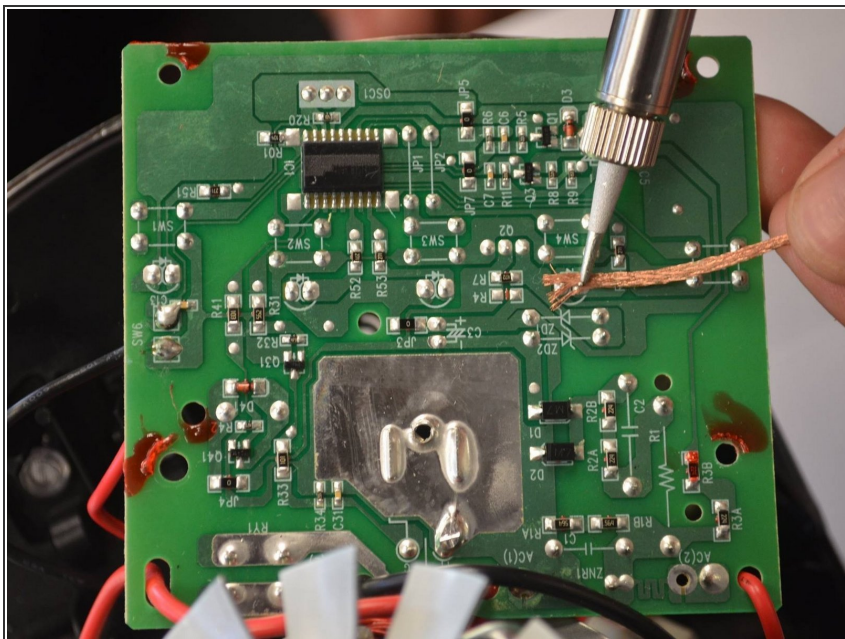
- After the wires have cooled enough to touch, carefully slide the circuit board free of the wires.
- **NOTE:** keep track of which pad each wire was soldered to. This is important for your blender to function.

## Step 8 — LED Light



- Locate the LED you wish to desolder.
- On the bottom of the board, each LED is designated with a small triangle with a line at one tip.

## Step 9



- Desolder the two LED leads, and remove the LED from the board.

- **NOTE:** the LED is a diode, and requires proper orientation when installed.

⚠ Soldering iron is very hot, use caution when handling

To reassemble your device, follow these instructions in reverse order.