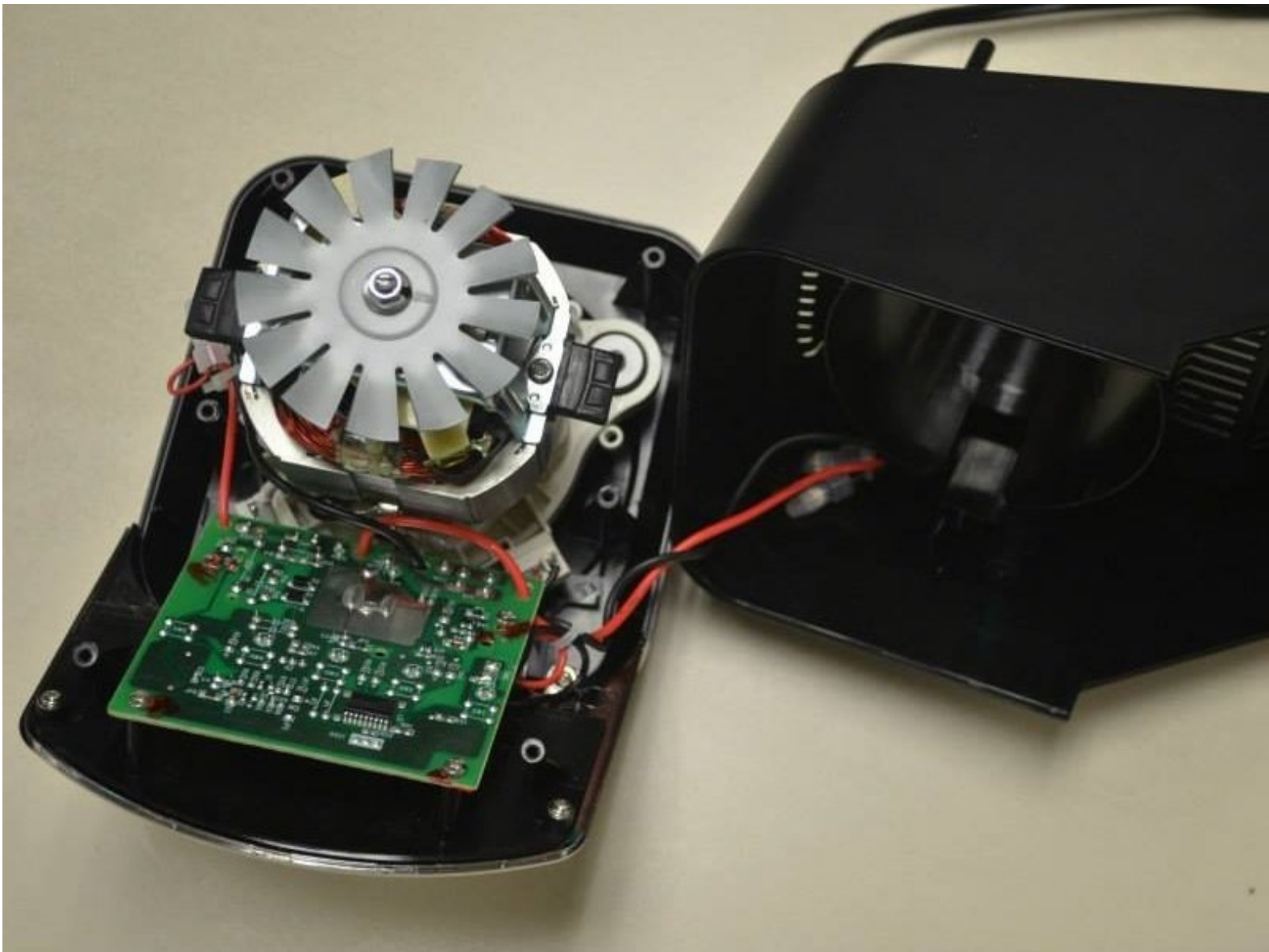




Ninja NJ600 Fan Replacement

When your blender is not working, or is overheating when in use, the problem may be due to the fan. This guide will help resolve any problems with the fan.

Written By: Ryan Heller



INTRODUCTION

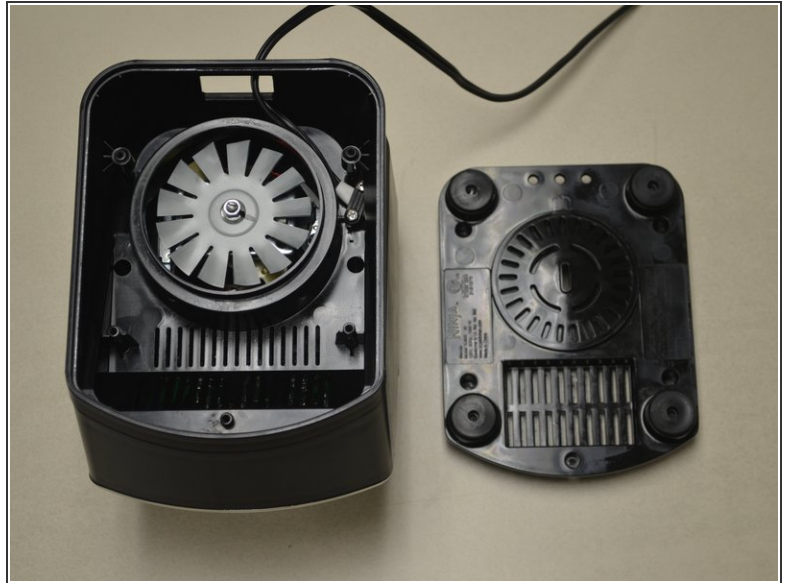
This guide will illustrate how to disassemble and replace the fan inside your blender.



PARTS:

- [1/8" Flathead Screwdriver](#) (1)
 - [Towel](#) (1)
 - [Small Needle Nose Pliers](#) (1)
-

Step 1 — Blender Base Cover



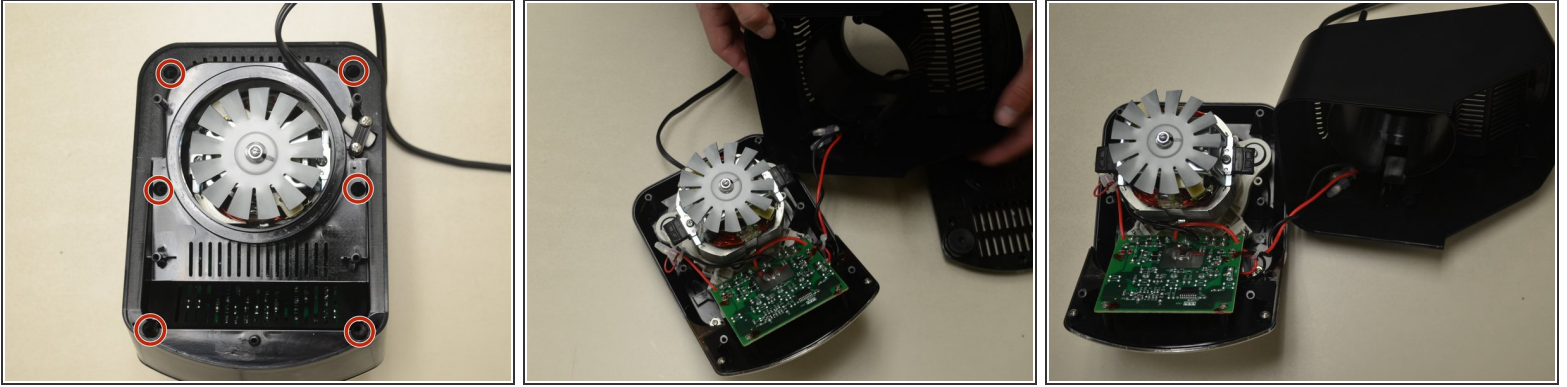
- Remove the five screws (13mm long, 6mm head diameter) using a Phillips #2 screwdriver.

Step 2



- Without removing any screws, you can pull the 2nd layer free from the base. Do this now and set it down gently next to the base.
- The power cord runs through a hole in the side of this layer. Squeeze the cord and pull it through the hole to separate the layer from the cord.

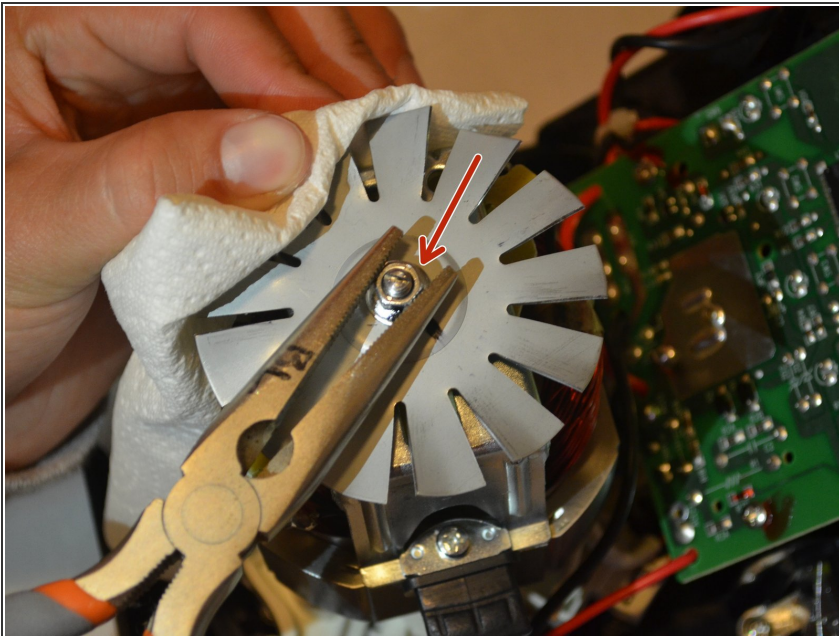
Step 3



- Using the Phillips #2 screwdriver, remove these six screws (13mm long, 6mm head diameter). Then carefully remove this layer, and rest it next to the blender base.

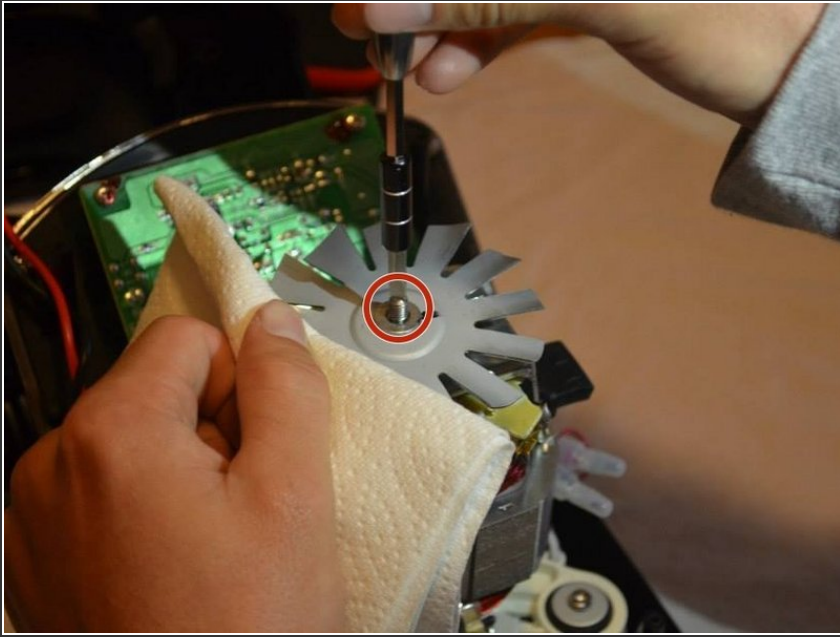
⚠ Be careful not to damage the two wires that are keeping this third layer attached to the base.

Step 4 — Fan



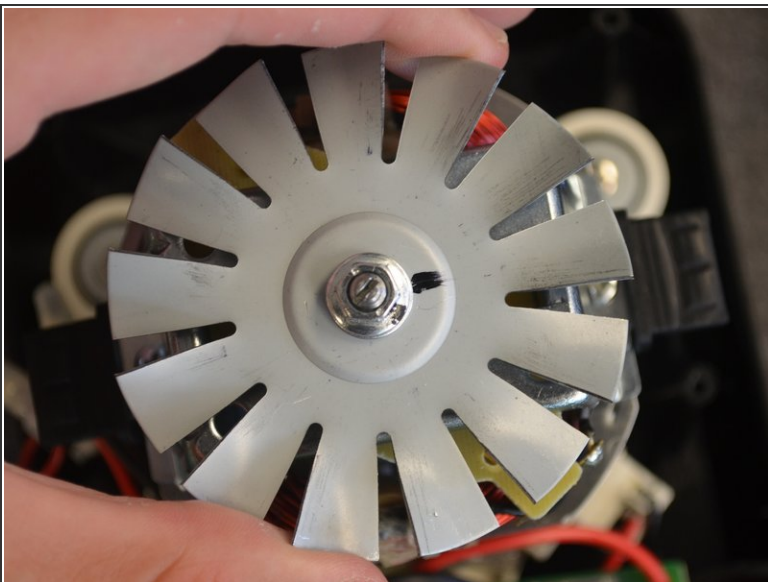
- Hold the fan steady and use a wrench or pliers to remove the nut in the image.
- ⚠ The fan is sharp. Use caution when handling with bare hands.
- ⓘ A towel or gloves may be useful when holding the fan for this step.

Step 5



- Hold the fan and use the flathead 4.0 screwdriver to loosen the washer.
- ⚠ The fan is sharp, use caution when handling with bare hands.
- ★ You may use a towel or gloves to avoid handling the fan with your bare hands.

Step 6



- Slide the washer and fan off of the screw.

To reassemble your device, follow these instructions in reverse order.