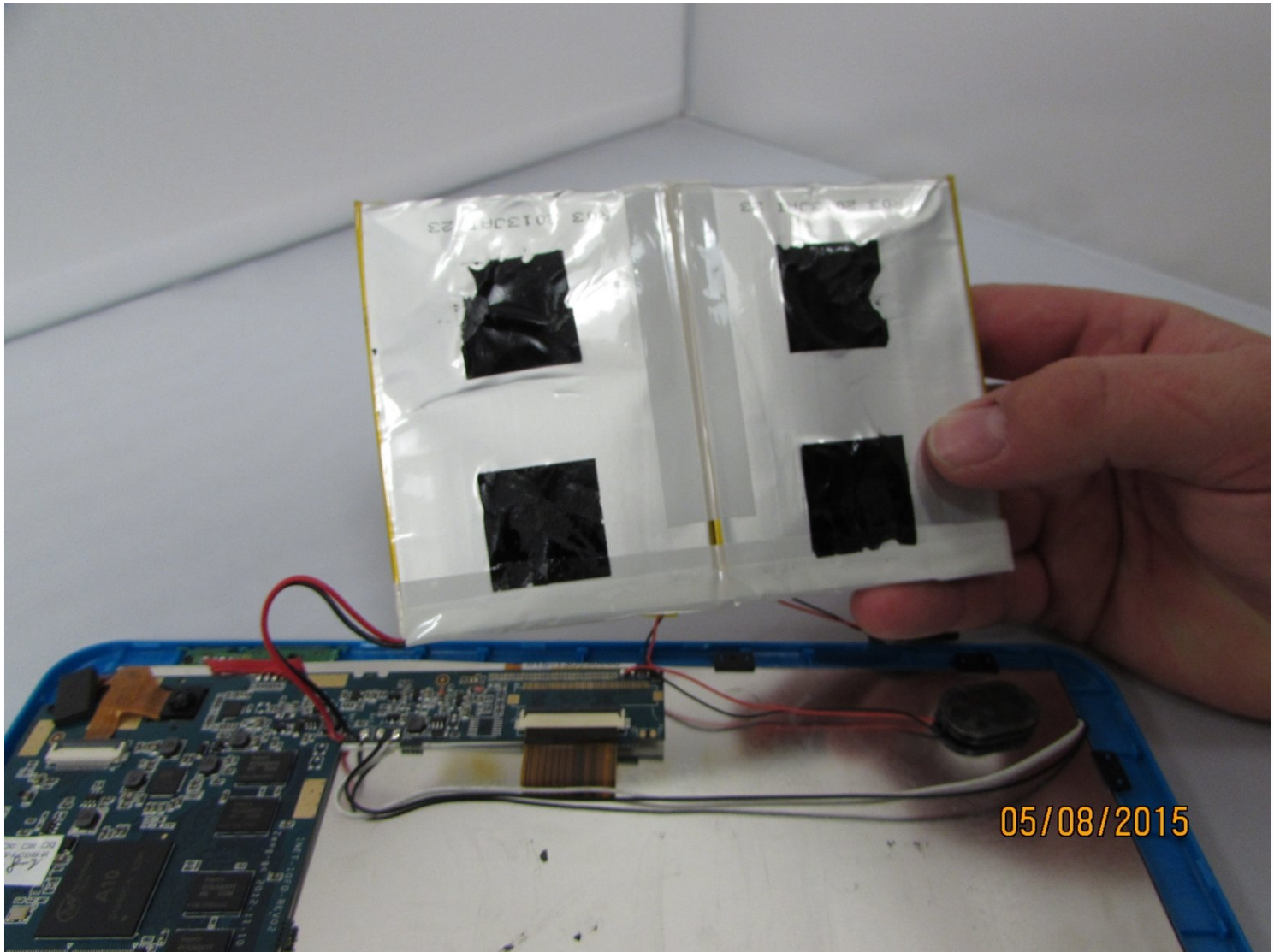




Visual Land Prestige 10 Battery Replacement

Written By: Connor Reese



TOOLS:

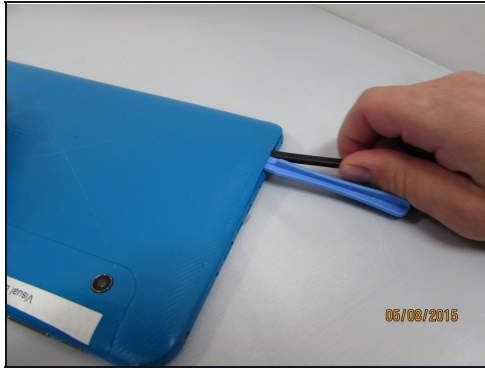
Magnetic Project Mat (1)
Phillips #00 Screwdriver (1)
iFixit Opening Tool (1)
Spudger (1)
Soldering Iron (1)

Step 1 — Back Case



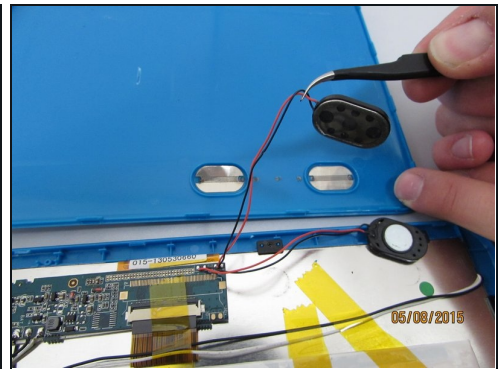
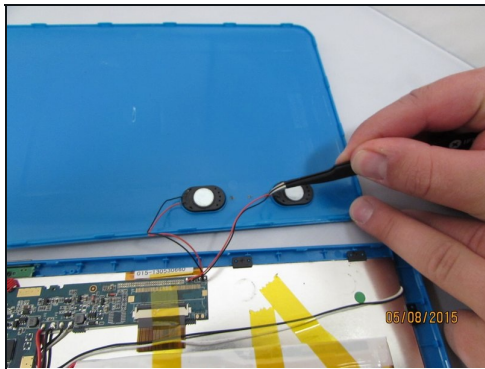
- Remove the 3mm screws from bottom of tablet with the precision screwdriver and place on [magnetic mat](#). label where they came from.
- ① All screws throughout this guide are the same 3mm size.

Step 2



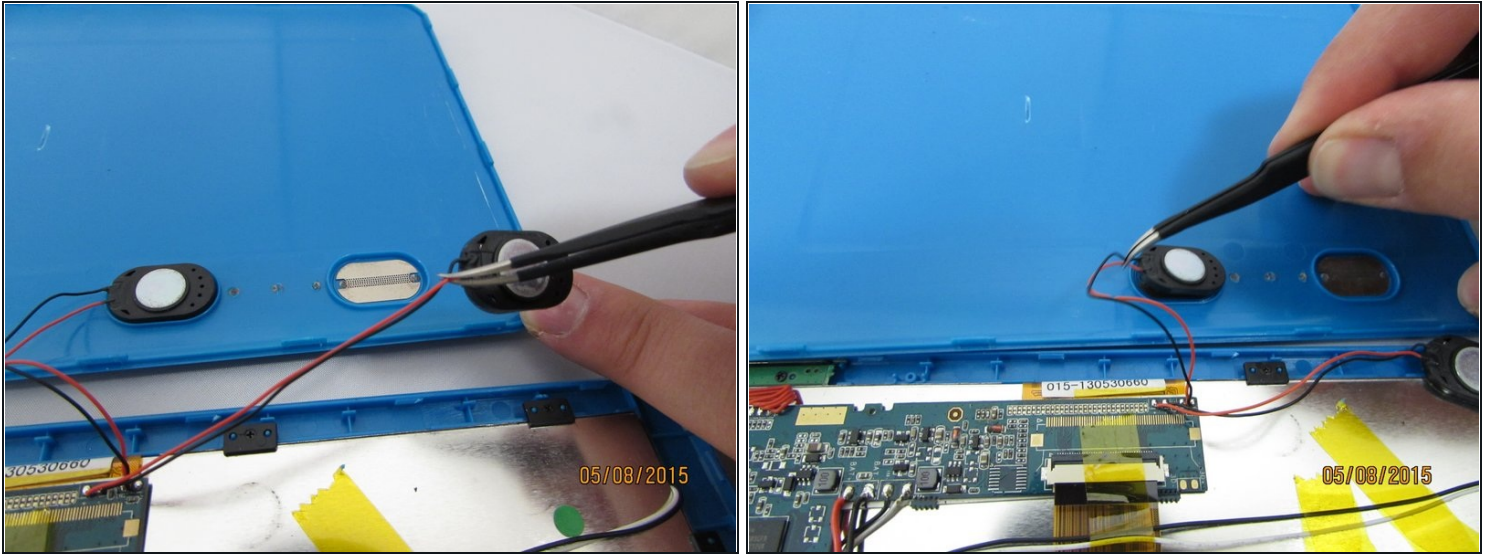
- Using the spudger, create a small opening to be used to open the back case.
- While holding the case open, insert the plastic opening tool to get a larger opening.
- Once you have a slight opening, insert the spudger and work around the edges, separating the back plate from the front.

Step 3



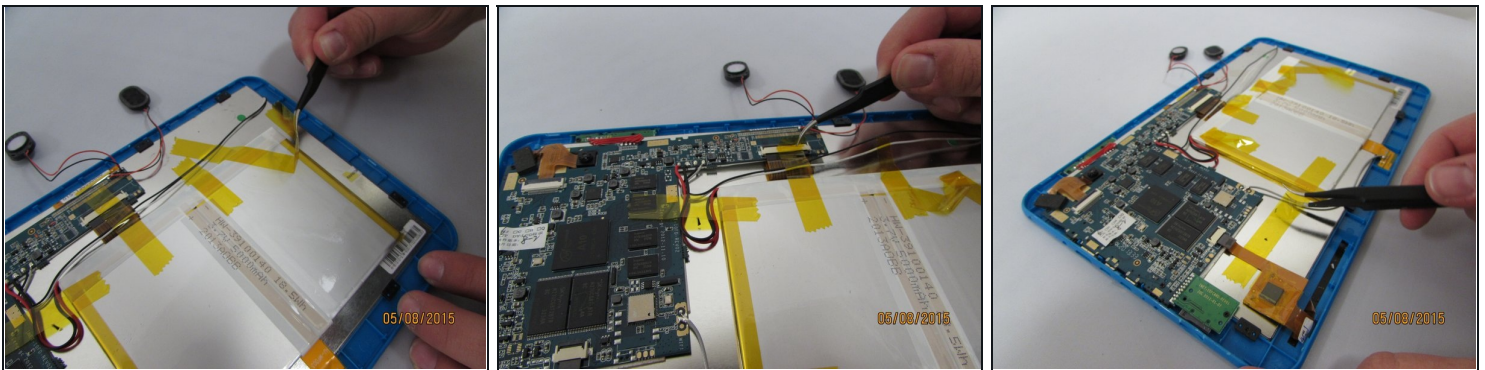
- now that the case is open, carefully remove the speakers and set aside.

Step 4



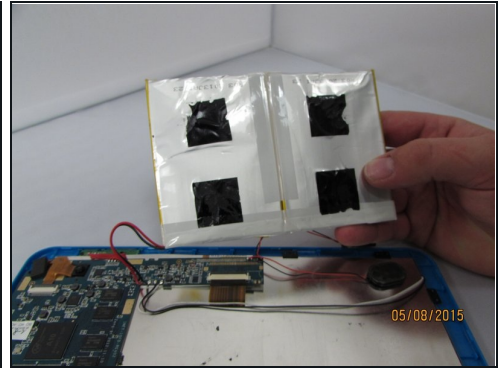
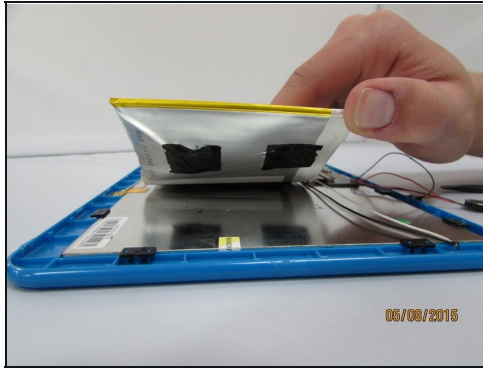
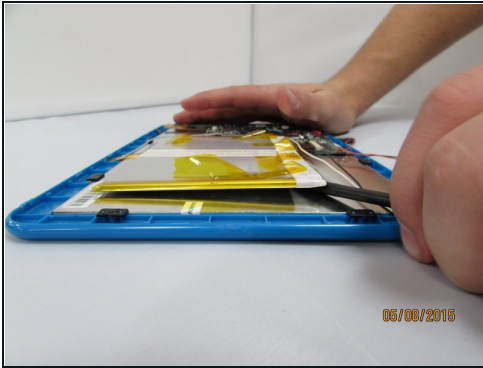
- Gently remove the speakers from the back case with tweezers and set the case aside.

Step 5 — Battery



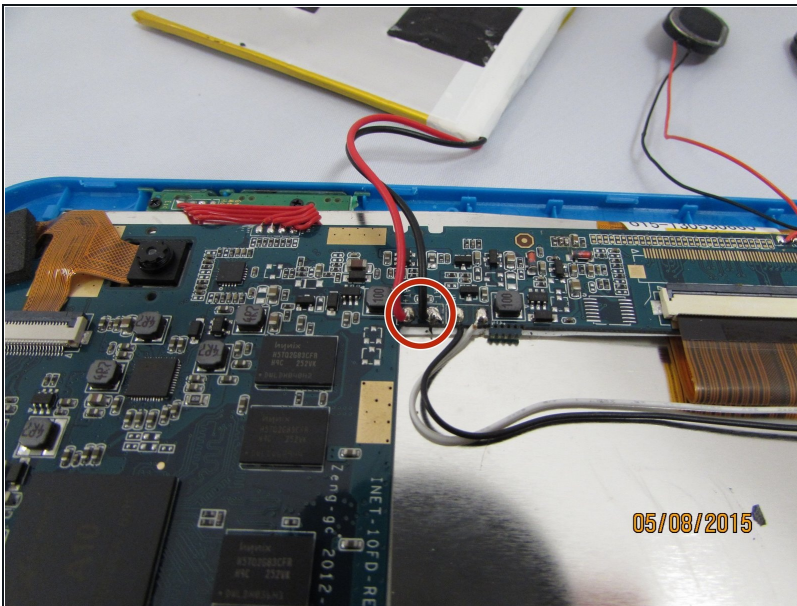
- Remove yellow tape from surrounding components.

Step 6



- insert the spudger and gently work around and underneath the battery.
- With the battery separated from the LCD Display, set it aside.
- ① The battery is held down by very strong adhesive.

Step 7



- Desolder and remove the 2 wires from the motherboard.

⚠ Use caution when desoldering to avoid damage to yourself or to the components.

To reassemble your device, follow these instructions in reverse order.