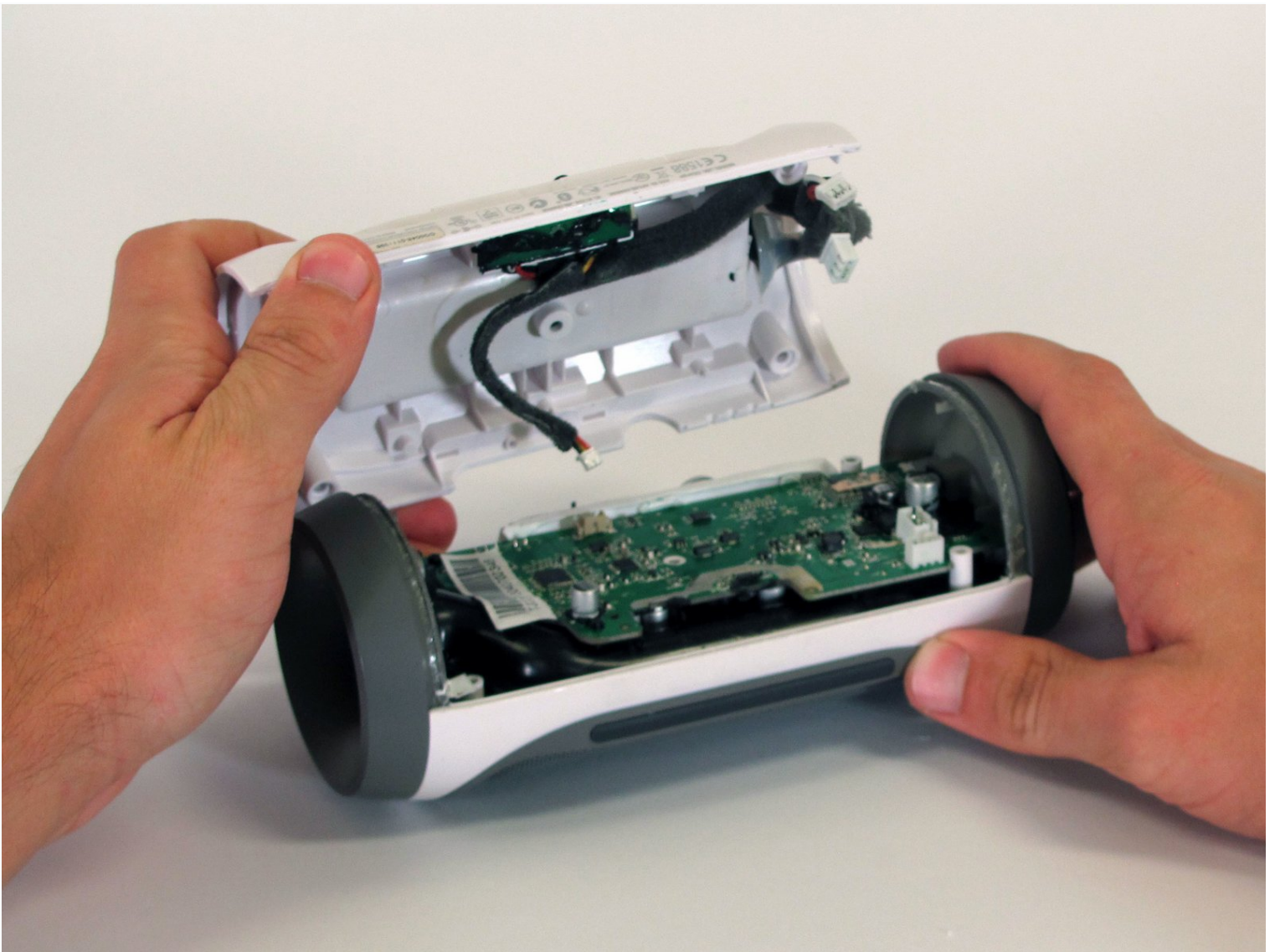




Disassembling JBL Charge Casing

This guide outlines how to disassemble a JBL...

Written By: Joe Durand



INTRODUCTION

This guide outlines how to disassemble a JBL Charge speaker's case. Disassembling the speaker's case will be useful in repairing water damage, and/or replacing batteries. This guide does not require special skills, besides basic knowledge of common hand held tools.

TOOLS:

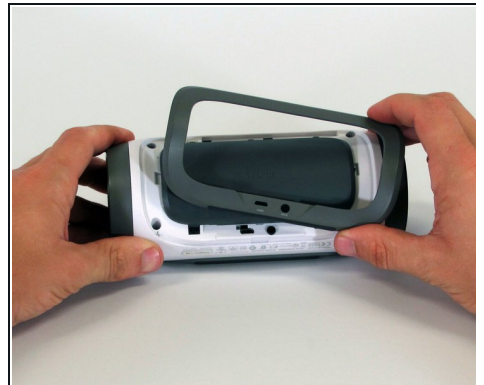
Metal Spudger (1)

Phillips #1 Screwdriver (1)

Spudger (1)

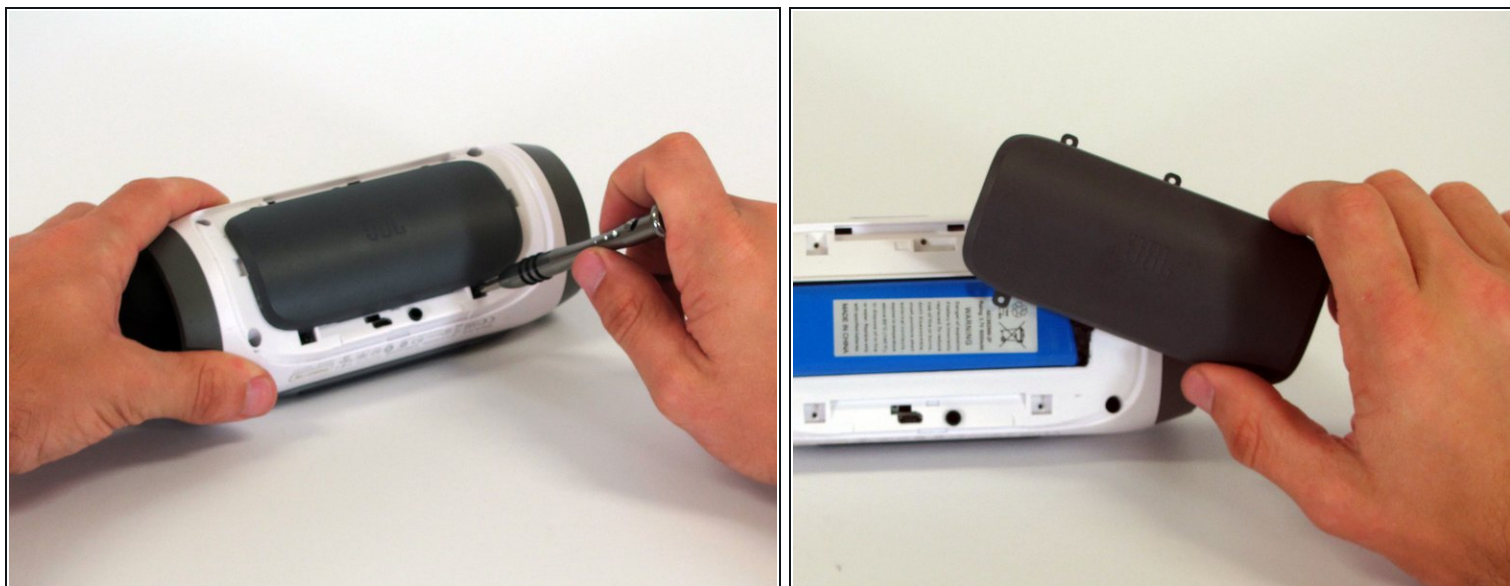
Phillips #2 Screwdriver (1)

Step 1 — Disassembling JBL Charge Casing



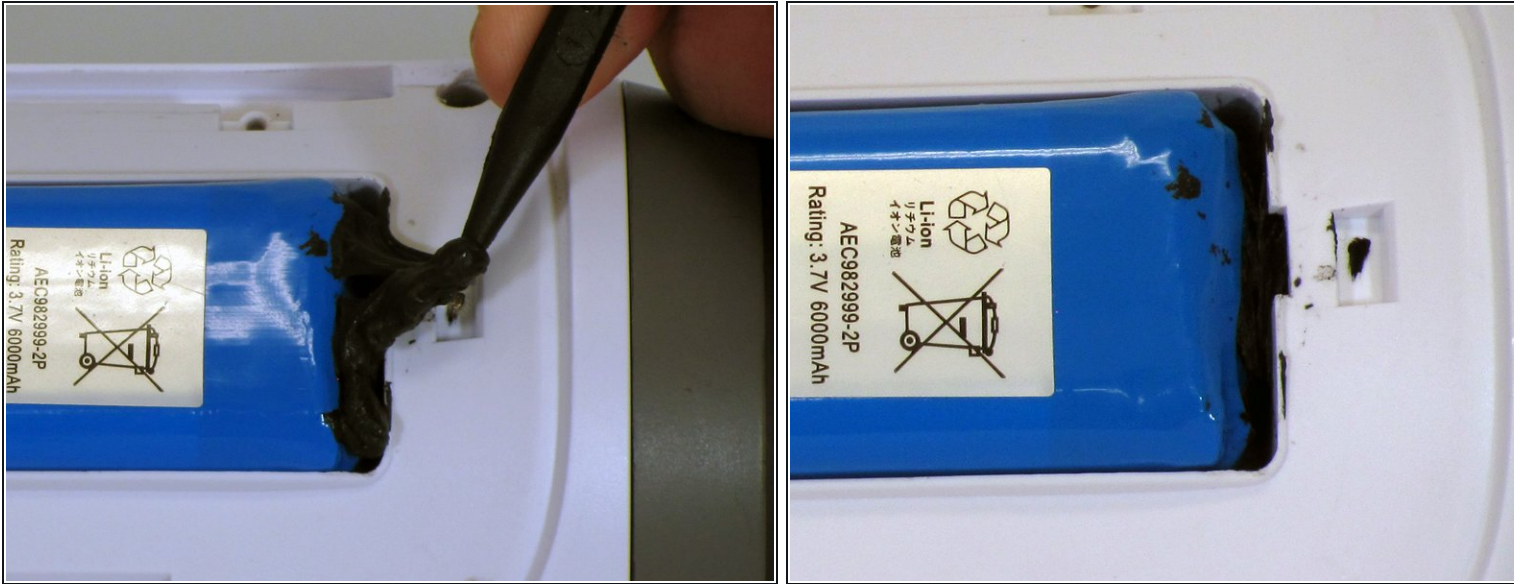
- Make sure the device is powered off before you begin to disassemble the speaker.
- Remove the trim from the speaker using a jimmy or metal spudger.

Step 2



- Use the PH1 screwdriver to remove all five of the 6 mm screws from the battery cover.
- Remove the battery cover and set the cover aside.

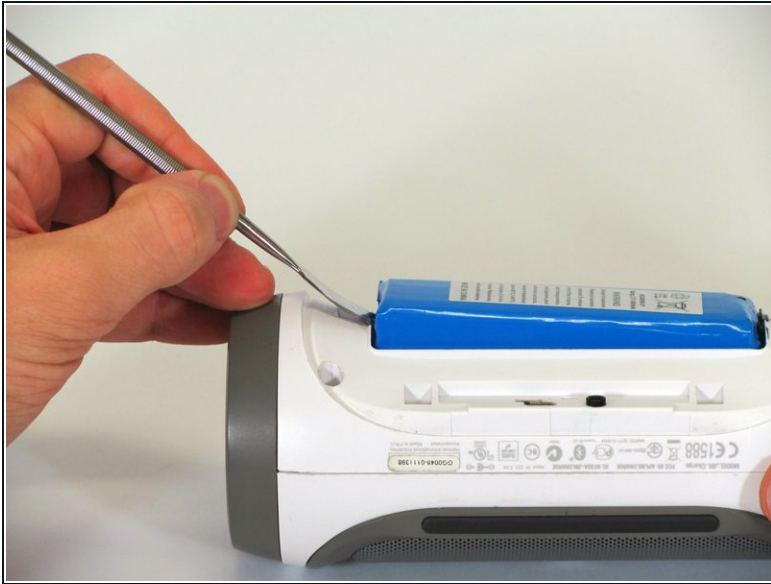
Step 3



- Use a spudger to carefully remove the liquid electrical tape that holds the battery inside the battery compartment.

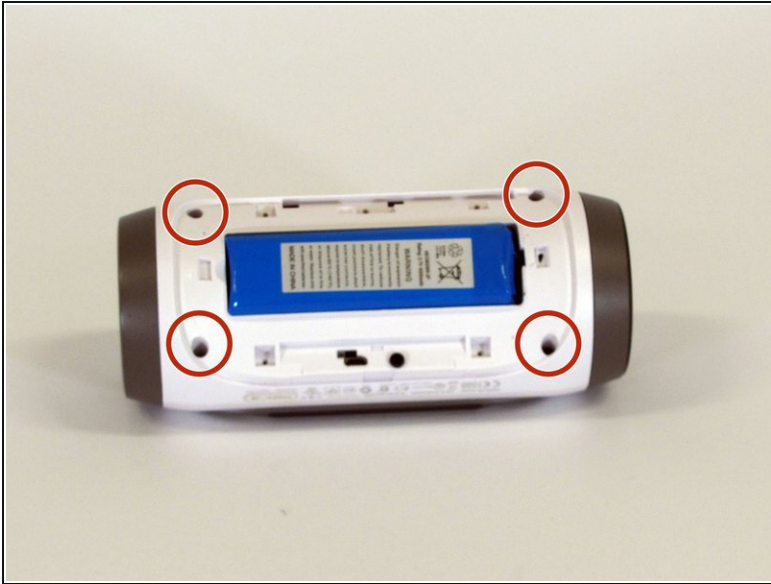
⚠ Be careful not to puncture the battery, or damage the battery wire underneath the liquid electrical tape.

Step 4



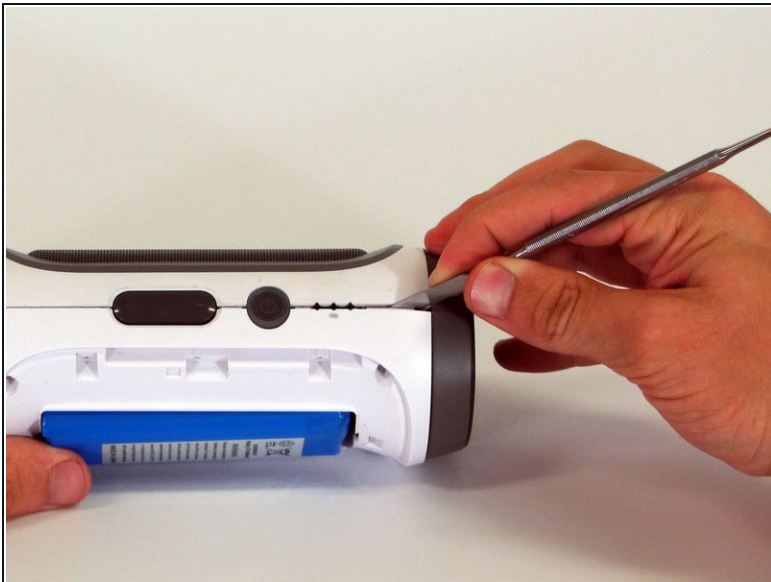
- Use a spudger to lift the battery out of the device.
 - Lift the end of the battery that does not have the wire connection and remove the 16 mm PH2 screw underneath the battery.
- ⚠ Notice the wire that is connecting the battery to the device. Attempting to remove the battery completely could cause damage to the wire. Do not use a metal spudger to remove the battery, this could cause damage.**

Step 5



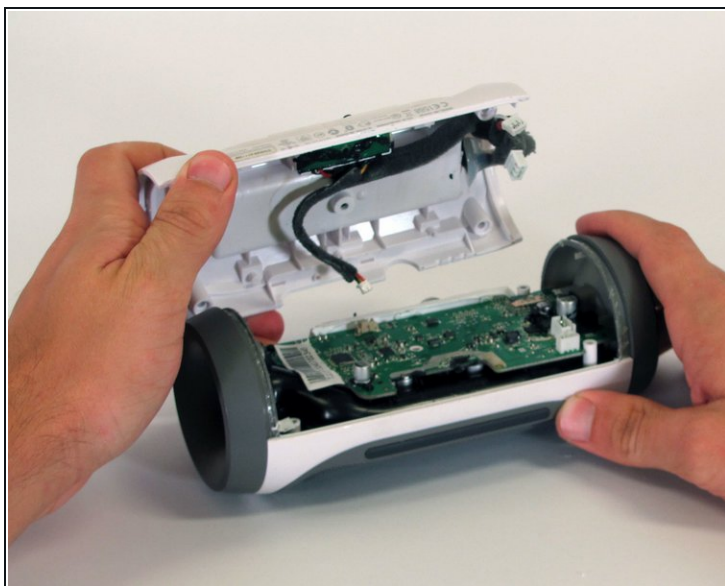
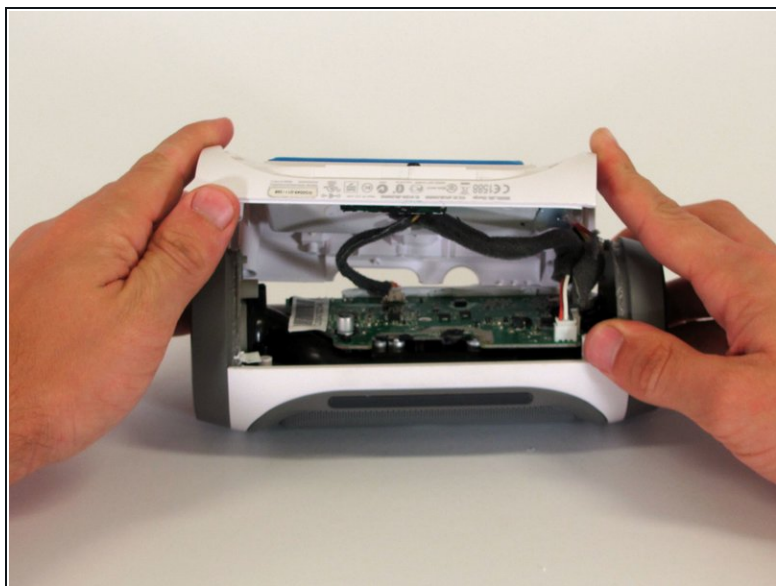
- Remove the four 16 mm screws from the white plastic casing using the PH2 screwdriver.

Step 6



- Starting in a corner of the device where the casing and the side meet, use a pointed metal spudger to pry the back casing off the speaker and the glue holding the seam together.
- Slide the metal spudger along the seam to separate the back casing from the rest of the speaker.

Step 7



- Once the back casing is open, disconnect the three white connectors from the motherboard.
- Remove the upper casing.

To reassemble your device, follow these instructions in reverse order.