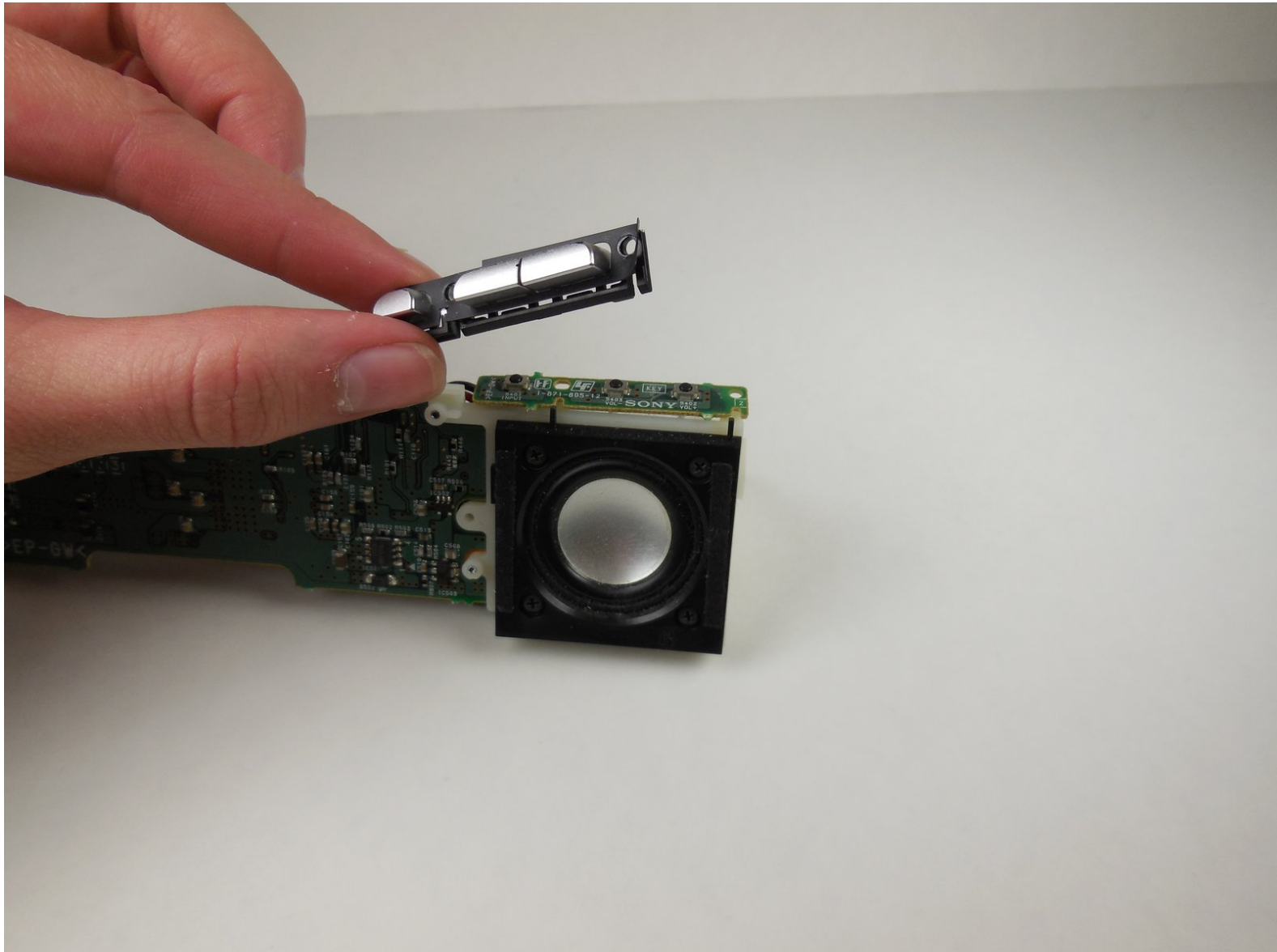




Sony CPF-IP001 Buttons on Main Speaker Replacement

This guide is for replacing the volume and function buttons on the top of the main speakers

Written By: Cole Stanley



INTRODUCTION

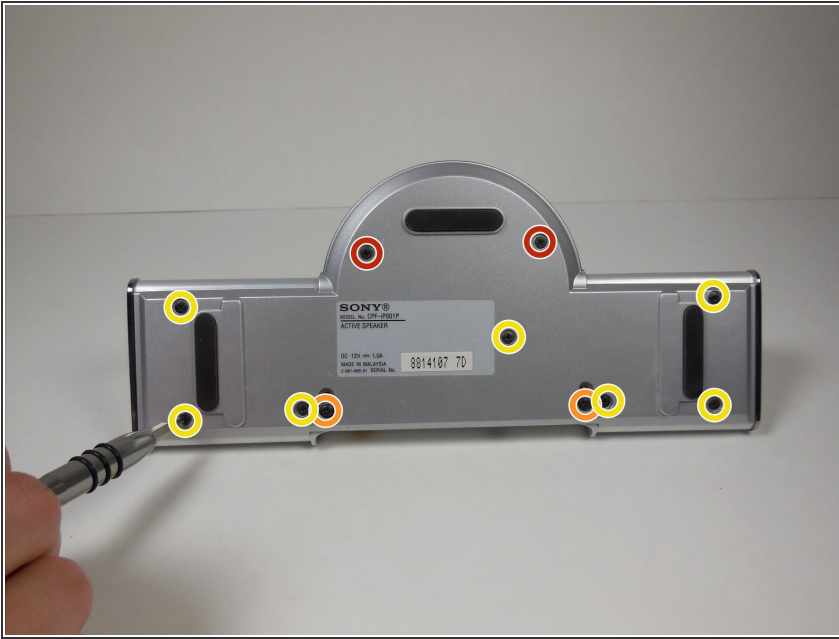
Use this guide to replace the function and volume buttons on the top of the speakers if they are broken.



TOOLS:

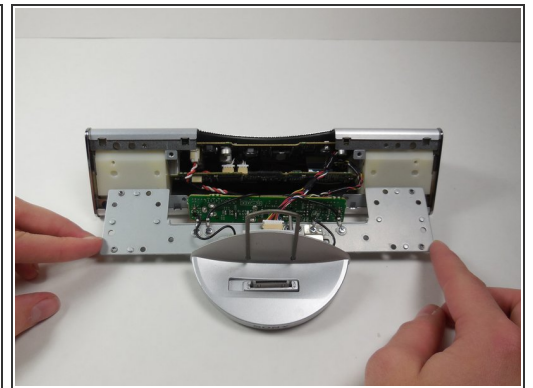
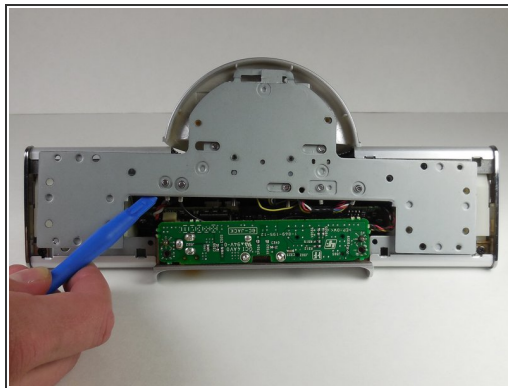
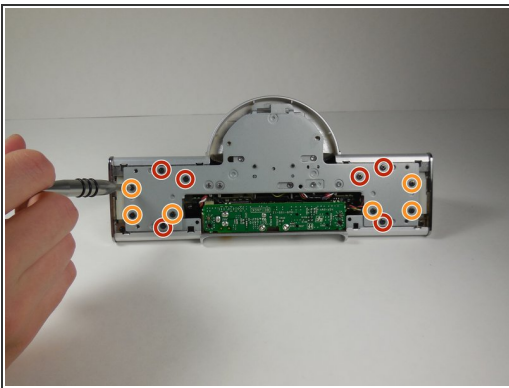
- [Phillips #0 Screwdriver](#) (1)
 - [iFixit Opening Tools](#) (1)
 - [Metal Spudger](#) (1)
 - [Tweezers](#) (1)
-

Step 1 — Main Speaker Housing Disassembly



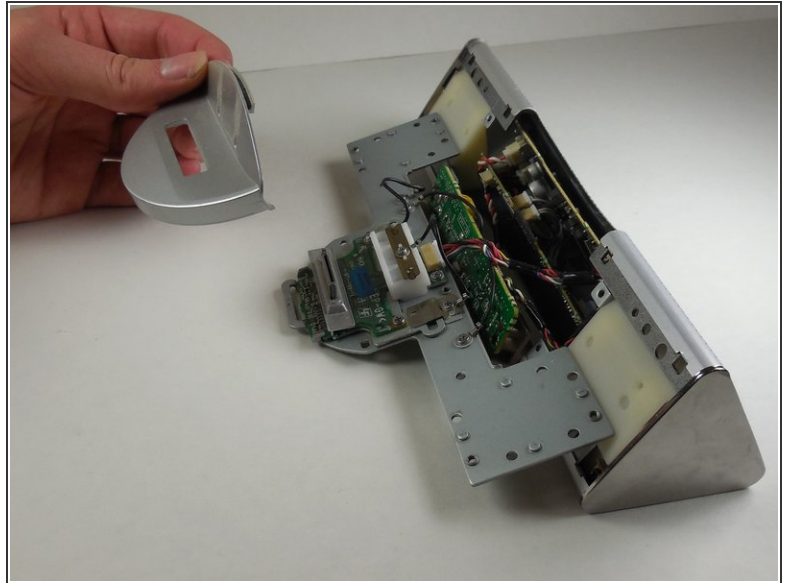
- Remove two 6mm Phillips #0 screws.
- Remove two 7.5 mm Phillips #0 screws.
- Remove seven 4 mm Phillips #0 screws.

Step 2



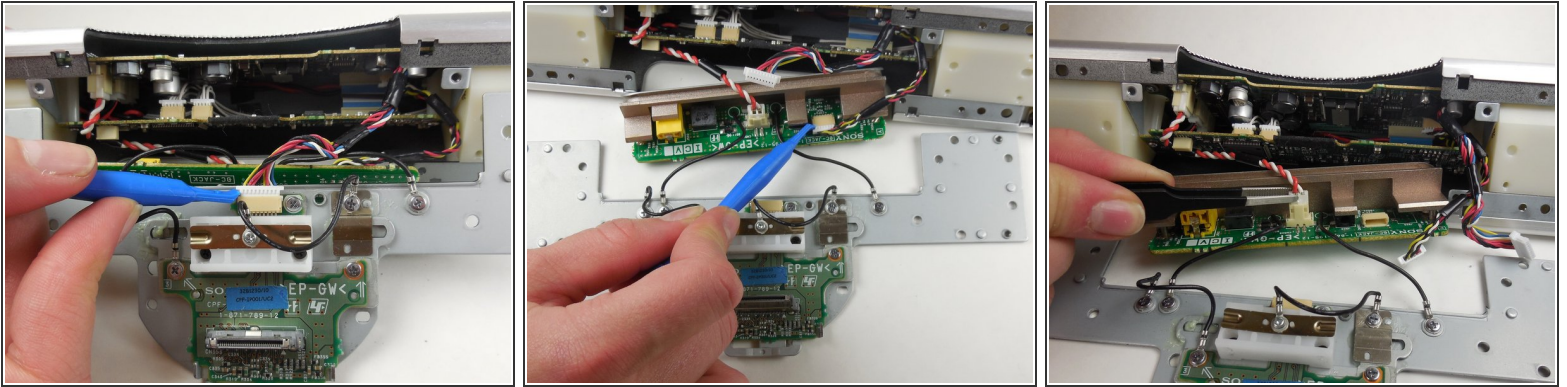
- Remove six 4 mm Phillips #0 screws from the metal backing.
- Remove six 5 mm Phillips #0 screws from the metal backing.
- Using the plastic opening tool, remove the metal plate from the main speaker by gently pulling on it.

Step 3




- Remove the plastic dock cover by using two fingers to push the attached metal piece forward and slide it out of the holes.

Step 4

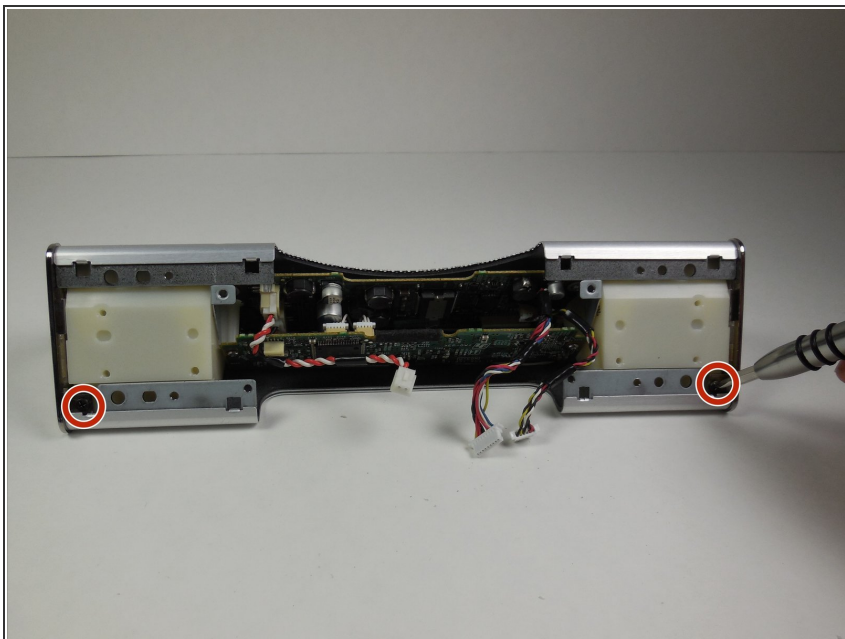


- Using the plastic opening tool, detach the wires connected to the metal plate

 When disconnecting the wires, be careful not to pull on the wires themselves. Use the plastic opening tool and the connector to disconnect it.

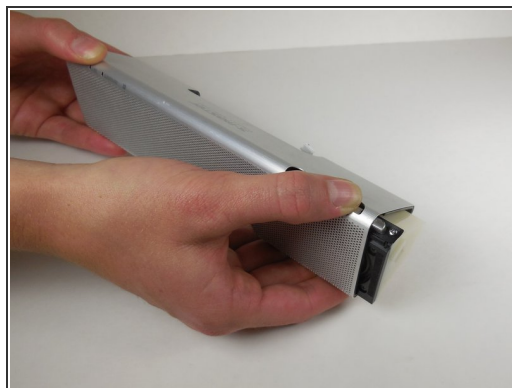
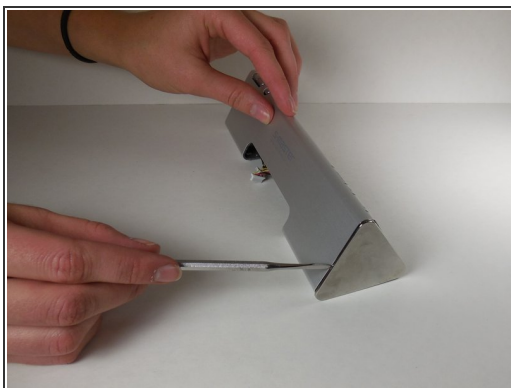
- Use the plastic opening tool to remove wires connected to the circuit board on the far right.
- Use the tweezers to remove wires connected to the circuit board in between the two black wires.
 - Use the tweezers to press the release tab on the front and back of the plastic white wire head.
 - Once the tab is pressed on both sides, lift up to slide wire head out of socket.

Step 5



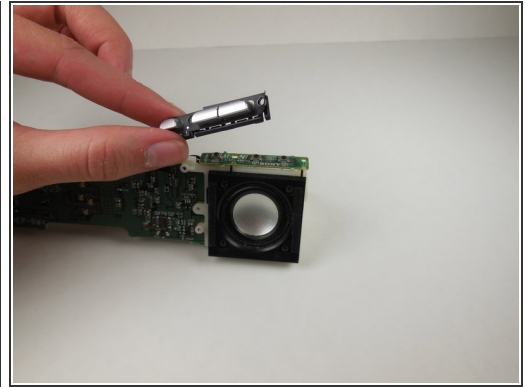
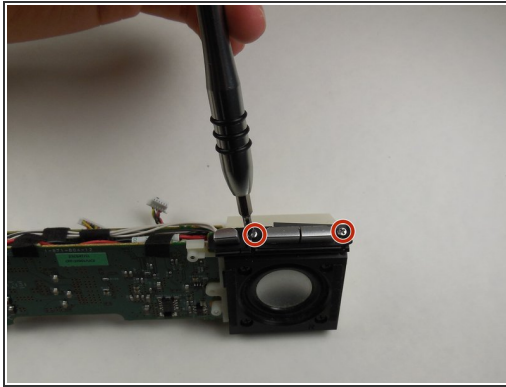
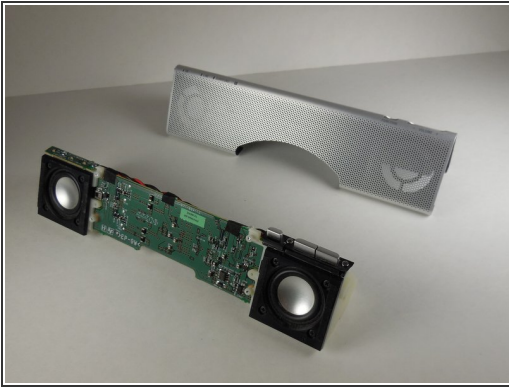
- Remove two 5 mm Phillips #0 screws.

Step 6



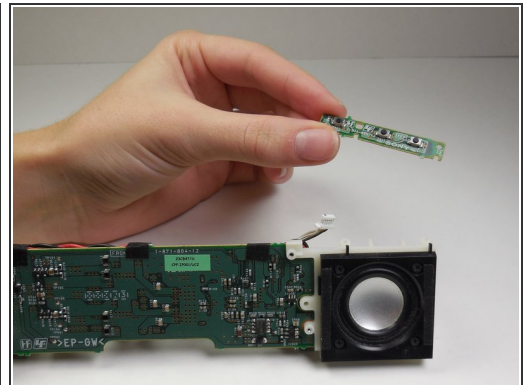
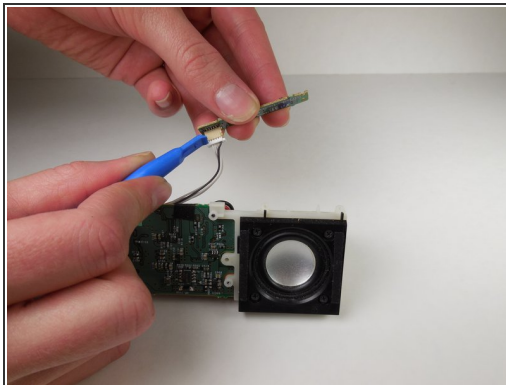
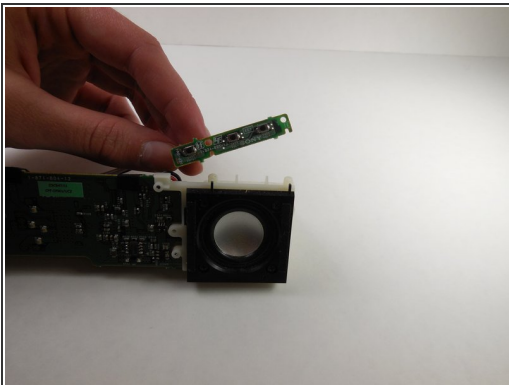
- Using the metal spudger, loosen the metal cap at the end of the speaker.
- Slide down the loosened cap to remove it from the end of the speaker.
- Simultaneously push down on the buttons and slide the speaker out from the casing.

Step 7 — Buttons on Main Speaker



- Remove two 6 mm Phillips #0 screws.
- Gently lift the silver buttons up to remove.

Step 8



- Using the plastic opening tool, disconnect the white connector from the circuit board.
- Replace the broken circuit board with a new one.

To reassemble your device, follow these instructions in reverse order.