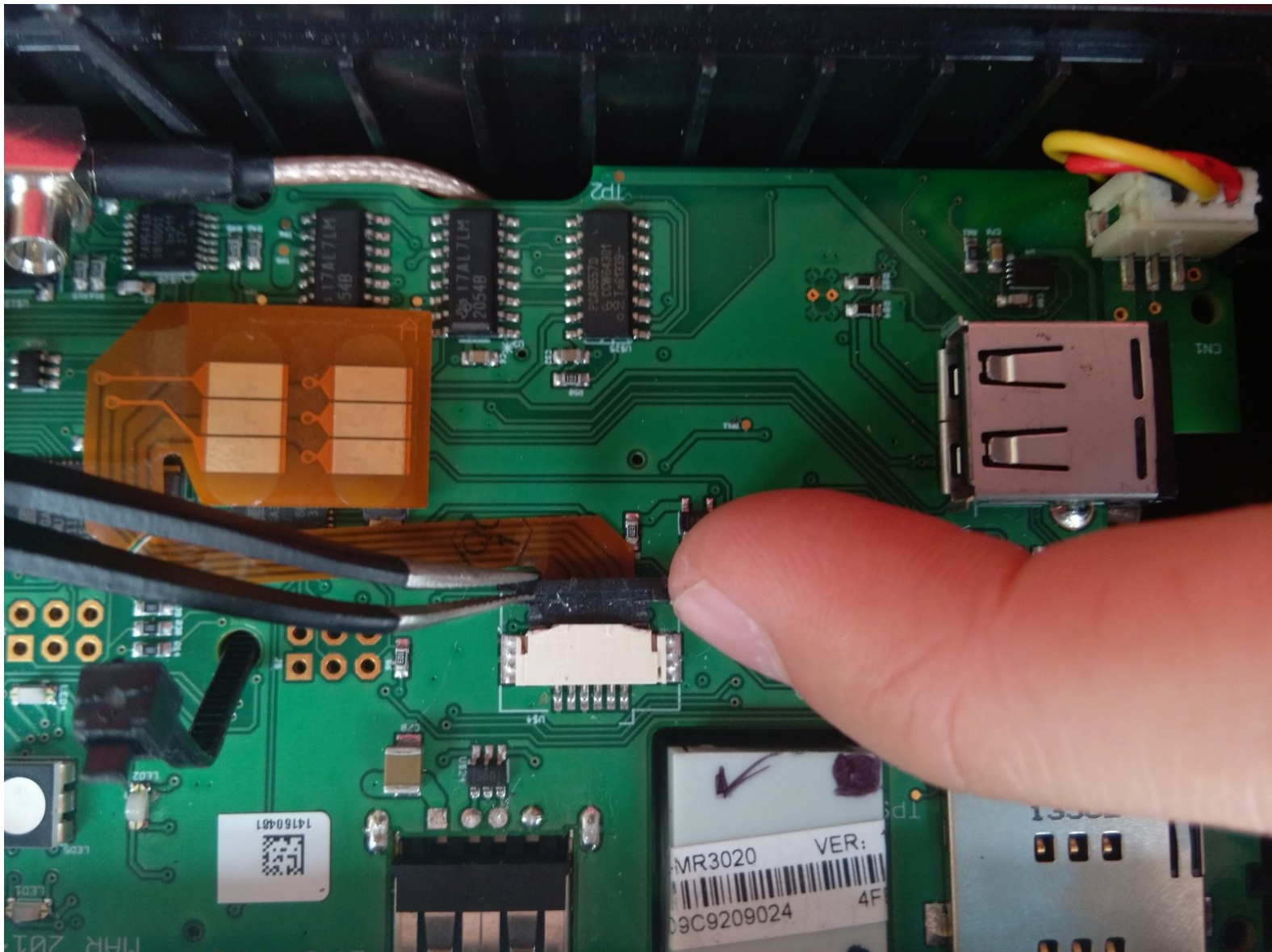




# BRCK v1 Modem Ribbon Connector Replacement

With this guide, you will be able to replace a damaged modem ribbon connector. This will help solve possible connection problems on the device.

Written By: Jeret Buerger



This document was generated on 2020-11-28 04:28:41 AM (MST).

---

## INTRODUCTION

This guide will show you how to remove the top case of the device utilizing a hex 2.0 drive. This allows you to access the modem. Using a pair of tweezers, you can easily remove the modem and replace the ribbon connector located underneath.



### TOOLS:

- [Tweezers](#) (1)
  - [2 mm Hex Screwdriver](#) (1)
-

## Step 1 — Top Cover



- Place the face of the device showing BRCK face up.

## Step 2



- Remove the four screws(4mm hex head) on the corners of the device with a Hex 2.0 Screwdriver.

## Step 3



- Remove the top cover.

## Step 4 — Modem



- Cut the black zip tie holding the modem down.
- ⚠ **Caution** By cutting the zip tie, you void any manufacturer warranty you may have on the device.



## Step 5



- Remove the connection located on the edge of the modem.

## Step 6



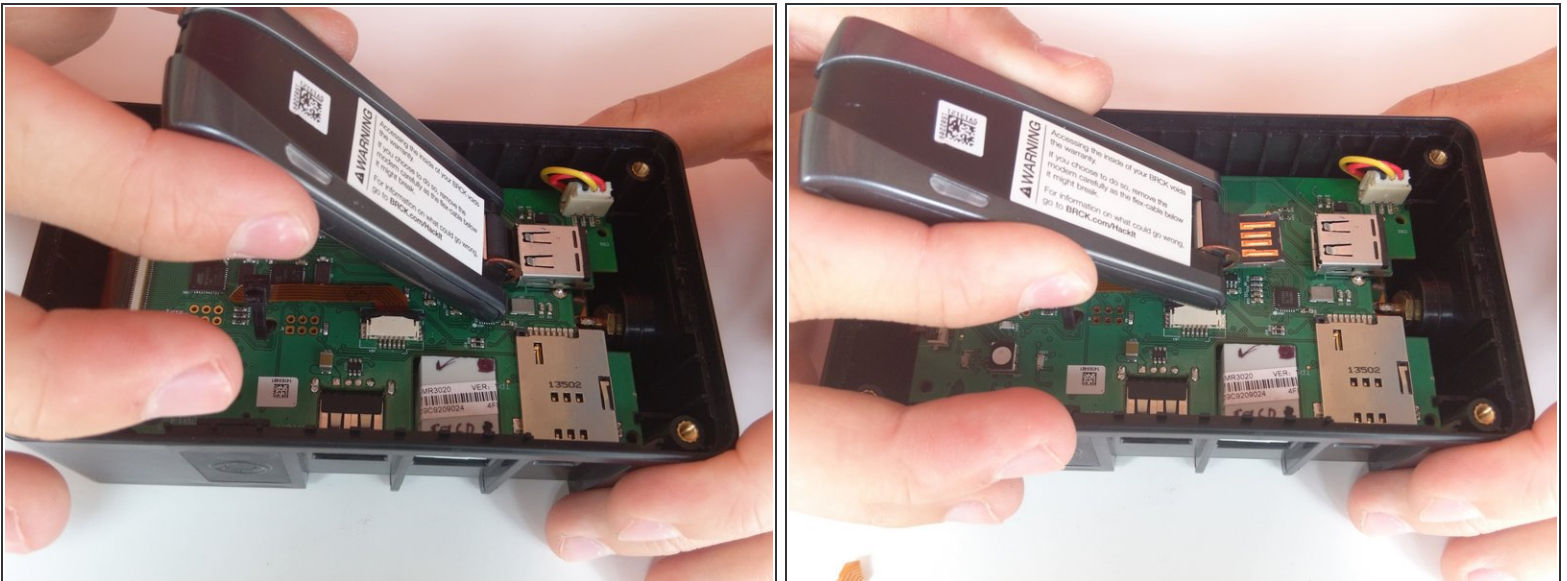
- Slightly lift the modem to reveal the brown ribbon connector and metal connection plate, located on the bottom of the modem.

## Step 7



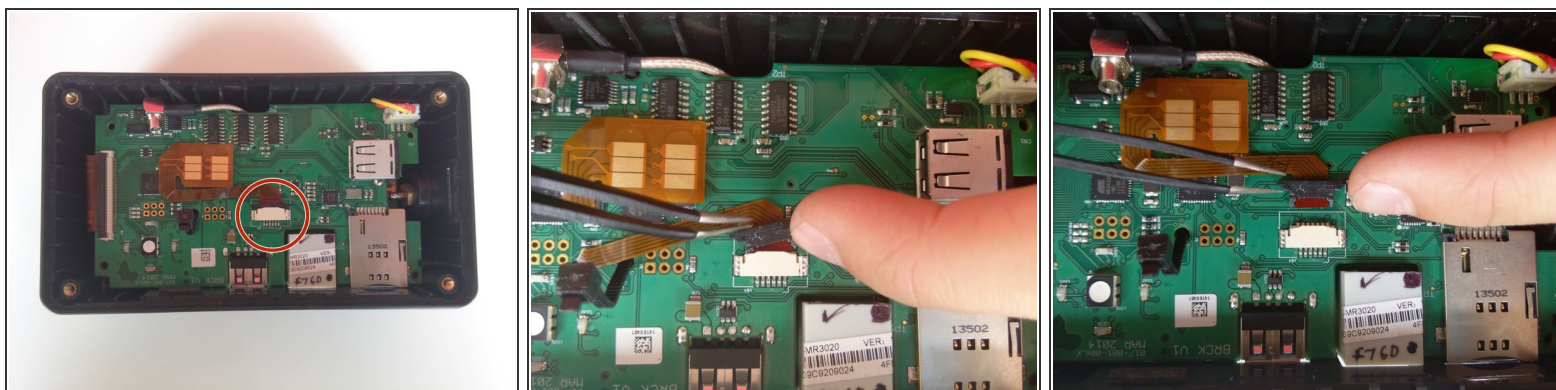
- Using your tweezers, gently push on the metal plate and slide it down toward the base of the modem to release the locking mechanism.
  - Lower the plate and gently pull the ribbon out of the face plate.
- ⚠ Caution** Be extremely gentle while preforming this step. The ribbon is brittle and prone to breaking if bent too much. Make sure you go slowly so that you do not damage the device.

## Step 8



- Remove the modem from the device.

## Step 9 — Modem Ribbon Connector



- Using your fingers, apply equal force to each side of the black tab to loosen the connection.
- Slide the ribbon out from under the black tab.

To reassemble your device, follow these instructions in reverse order.