



Disassembling Sony CPF-IP001 Main Speaker Housing

Disassembly

This guide will show you how to remove the...

Written By: Marlena Perez



INTRODUCTION

This guide will show you how to remove the front paneling and disconnect the wiring.

TOOLS:

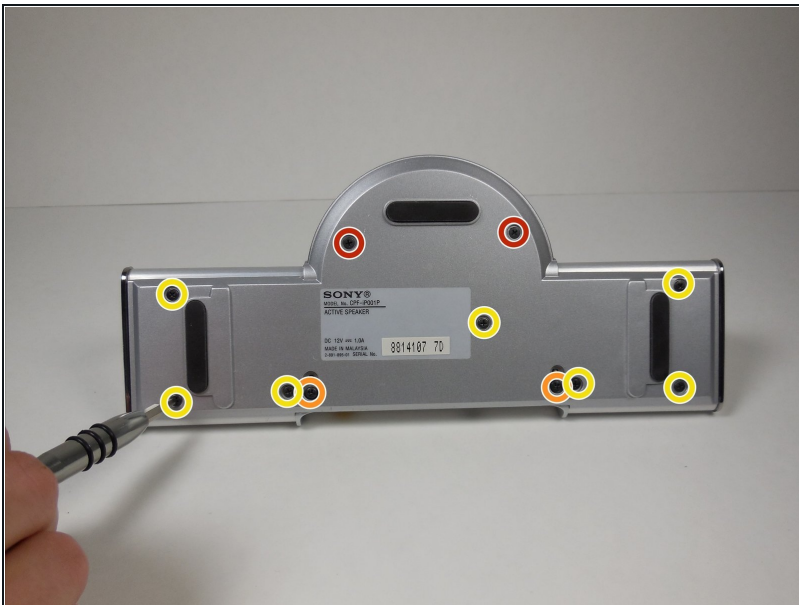
Phillips #0 Screwdriver (1)

iFixit Opening Tool (1)

Metal Spudger (1)

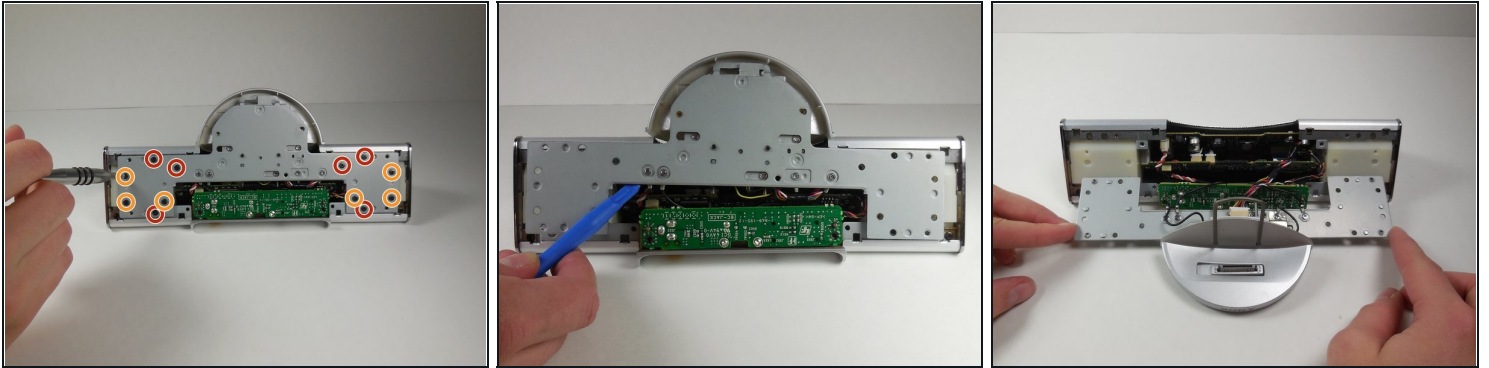
Tweezers (1)

Step 1 — Main Speaker Housing Disassembly



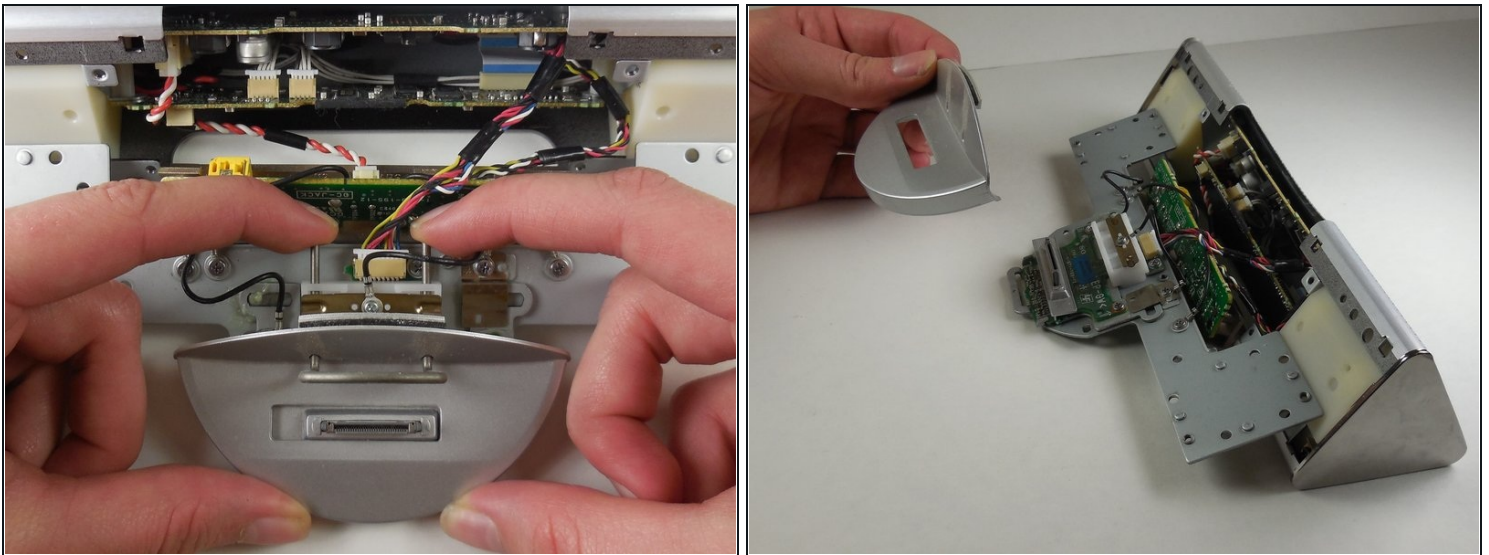
- Remove two 6mm Phillips #0 screws.
- Remove two 7.5 mm Phillips #0 screws.
- Remove seven 4 mm Phillips #0 screws.

Step 2



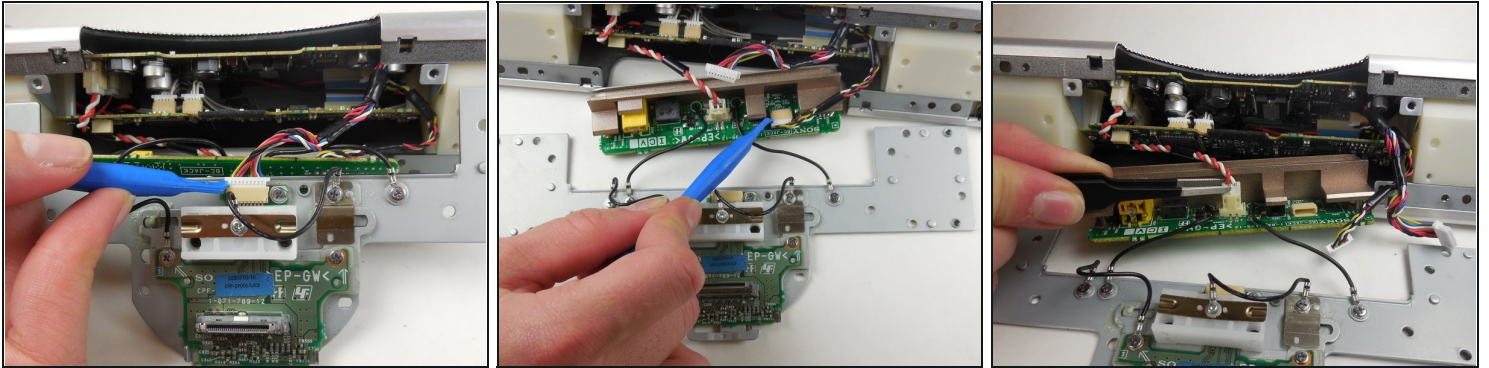
- Remove six 4 mm Phillips #0 screws from the metal backing.
- Remove six 5 mm Phillips #0 screws from the metal backing.
- Using the plastic opening tool, remove the metal plate from the main speaker by gently pulling on it.

Step 3



- Remove the plastic dock cover by using two fingers to push the attached metal piece forward and slide it out of the holes.

Step 4

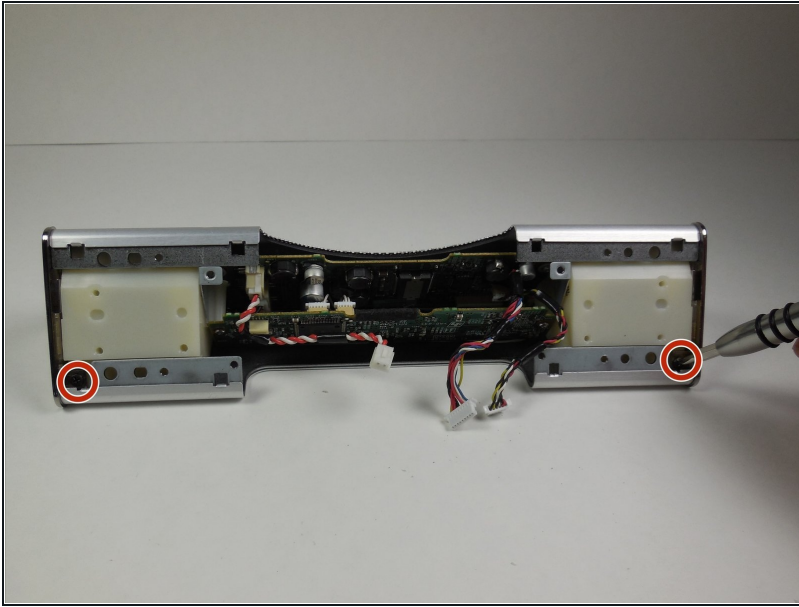


- Using the plastic opening tool, detach the wires connected to the metal plate

⚠ When disconnecting the wires, be careful not to pull on the wires themselves. Use the plastic opening tool and the connector to disconnect it.

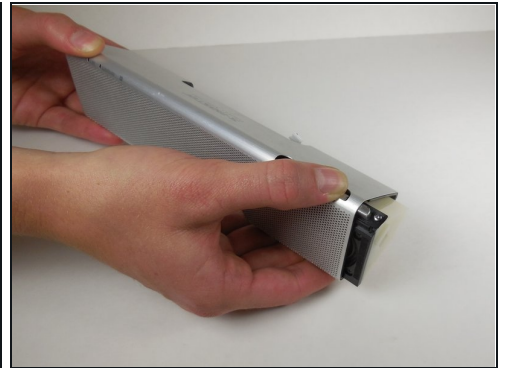
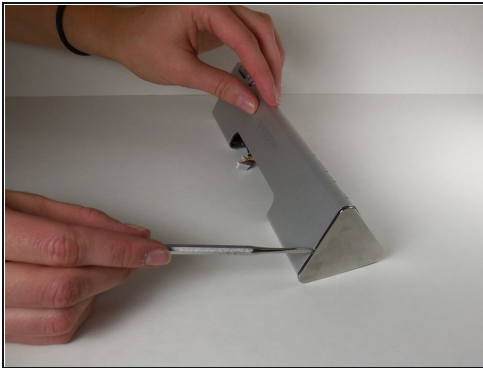
- Use the plastic opening tool to remove wires connected to the circuit board on the far right.
- Use the [tweezers](#) to remove wires connected to the circuit board in between the two black wires.
- Use the tweezers to press the release tab on the front and back of the plastic white wire head.
- Once the tab is pressed on both sides, lift up to slide wire head out of socket.

Step 5



- Remove two 5 mm Phillips #0 screws.

Step 6



- Using the metal spudger, loosen the metal cap at the end of the speaker.
- Slide down the loosened cap to remove it from the end of the speaker.
- Simultaneously push down on the buttons and slide the speaker out from the casing.

To reassemble your device, follow these instructions in reverse order.