



Disassembling Sony CPF-IP001 Main Speaker

Housing Disassembly

This guide will provide step by step instructions on how to take apart the main speakers. It should be used as a preliminary guide before replacing the speakers or buttons.

Written By: Marlena Perez



INTRODUCTION

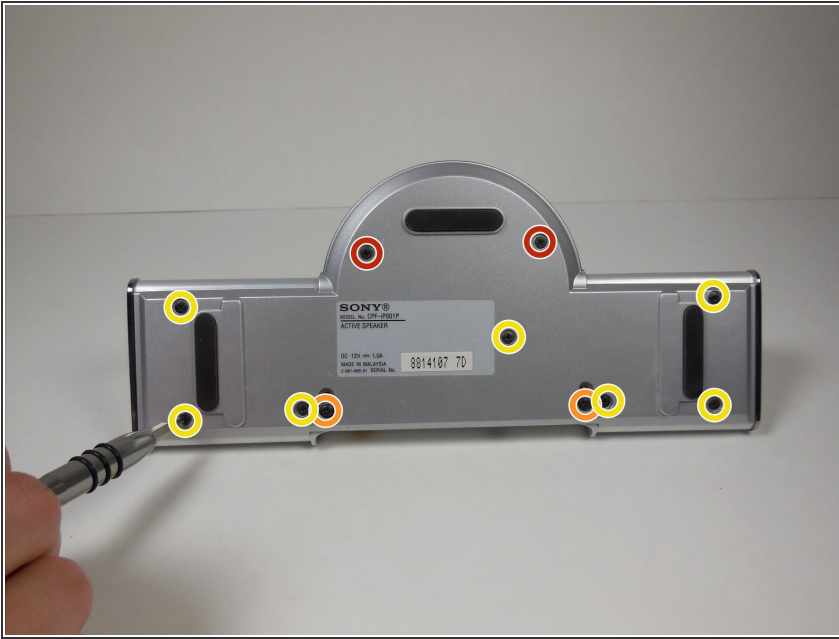
This guide will show you how to remove the front paneling and disconnect the wiring.



TOOLS:

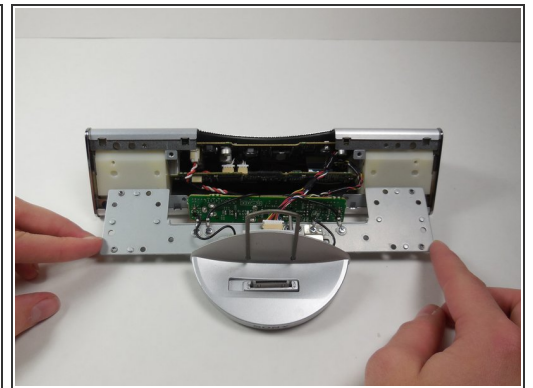
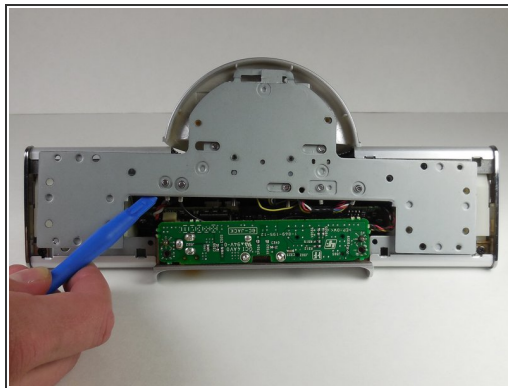
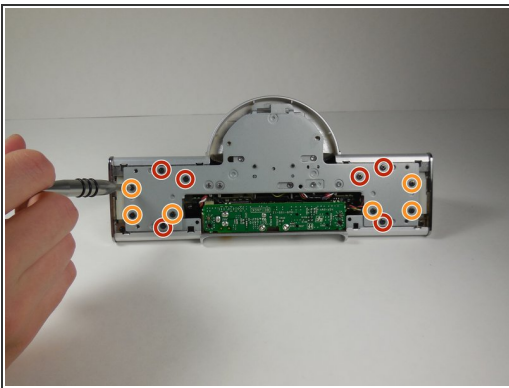
- [Phillips #0 Screwdriver](#) (1)
 - [iFixit Opening Tools](#) (1)
 - [Metal Spudger](#) (1)
 - [Tweezers](#) (1)
-

Step 1 — Main Speaker Housing Disassembly



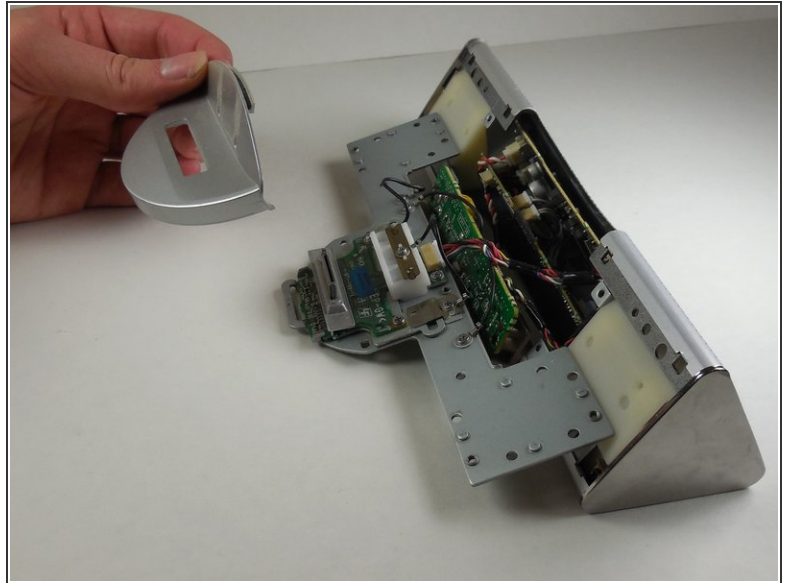
- Remove two 6mm Phillips #0 screws.
- Remove two 7.5 mm Phillips #0 screws.
- Remove seven 4 mm Phillips #0 screws.

Step 2



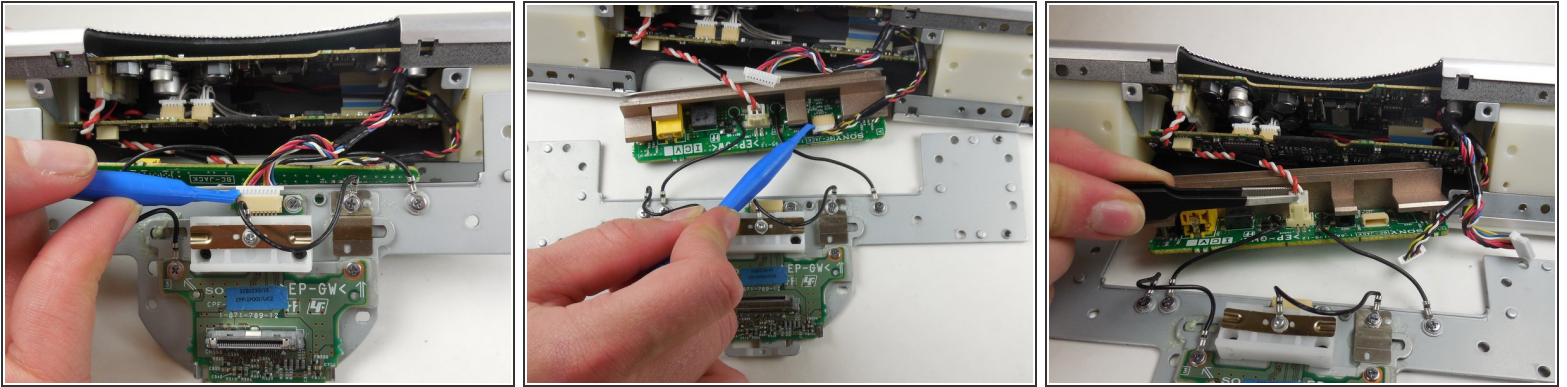
- Remove six 4 mm Phillips #0 screws from the metal backing.
- Remove six 5 mm Phillips #0 screws from the metal backing.
- Using the plastic opening tool, remove the metal plate from the main speaker by gently pulling on it.

Step 3




- Remove the plastic dock cover by using two fingers to push the attached metal piece forward and slide it out of the holes.

Step 4

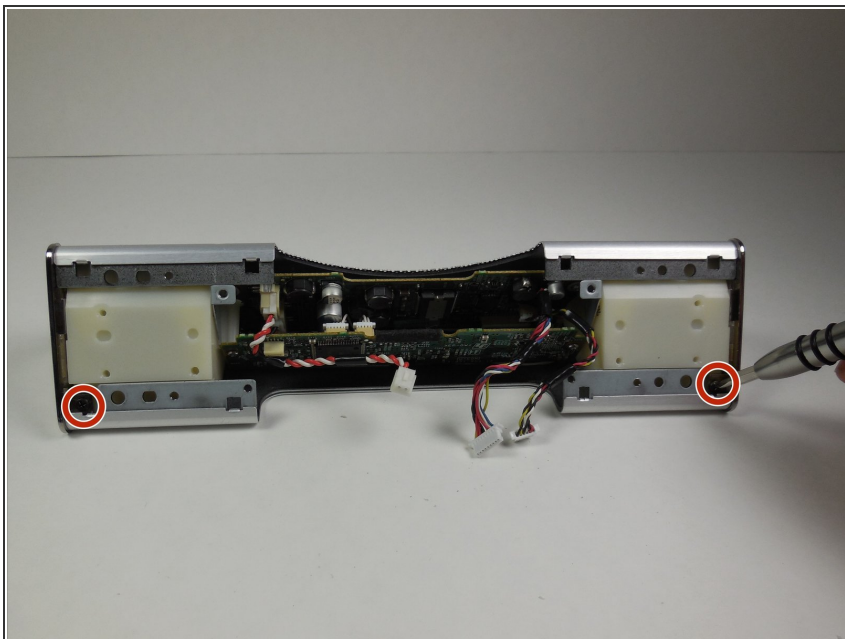


- Using the plastic opening tool, detach the wires connected to the metal plate

 When disconnecting the wires, be careful not to pull on the wires themselves. Use the plastic opening tool and the connector to disconnect it.

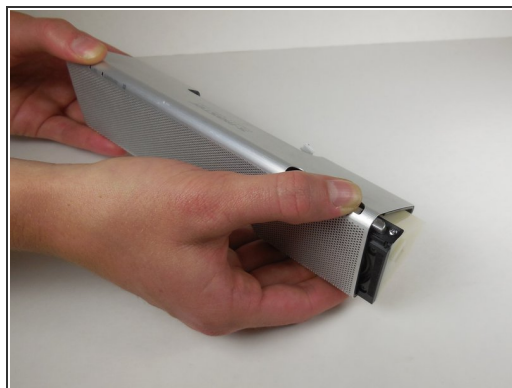
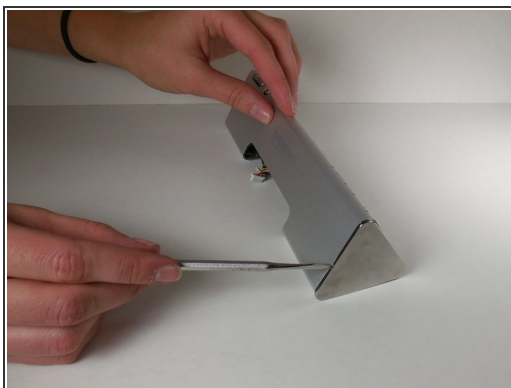
- Use the plastic opening tool to remove wires connected to the circuit board on the far right.
- Use the tweezers to remove wires connected to the circuit board in between the two black wires.
 - Use the tweezers to press the release tab on the front and back of the plastic white wire head.
 - Once the tab is pressed on both sides, lift up to slide wire head out of socket.

Step 5



- Remove two 5 mm Phillips #0 screws.

Step 6



- Using the metal spudger, loosen the metal cap at the end of the speaker.
- Slide down the loosened cap to remove it from the end of the speaker.
- Simultaneously push down on the buttons and slide the speaker out from the casing.

To reassemble your device, follow these instructions in reverse order.