



# Nintendo 3DS XL 2015 Directional Pad Replacement

If the Nintendo 3DS XL 2015 directional pad is...

Written By: Thomas Cho



# INTRODUCTION

If the Nintendo 3DS XL 2015 directional pad is malfunctioning or not working at all, this replacement guide will help you fix the problem.

## TOOLS:

[JIS Driver Set](#) (1)

[Spudger](#) (1)

[Tweezers](#) (1)


## PARTS:

[Nintendo 3DS XL \(2015\) D-Pad Board](#)  
(1)

[Nintendo 3DS XL \(2015\) D-Pad Button](#)  
(1)

## Step 1 — Battery



 **Ensure your device is powered off before proceeding. Failure to do so may result in electrical shock or damage to the device.**

- Place the 3DS upside down. Remove the game card, headphones, charging cable, stylus, or anything else that may be connected to the device.

## Step 2



- Using a JIS #0 screwdriver, loosen the two black screws on the back.
- ① The screws are held in place by captive washers and should not be completely removed.

## Step 3



- Once the screws are loosened, pry open the back cover.

## Step 4



- The battery is located on the left hand side of the 3DS - to remove, use the small gap located at the top-middle and pull up with a non metal pointed tool.

## Step 5 — Motherboard



- Using a JIS #000 screwdriver, remove the six 6mm screws around the edges of the secondary cover.

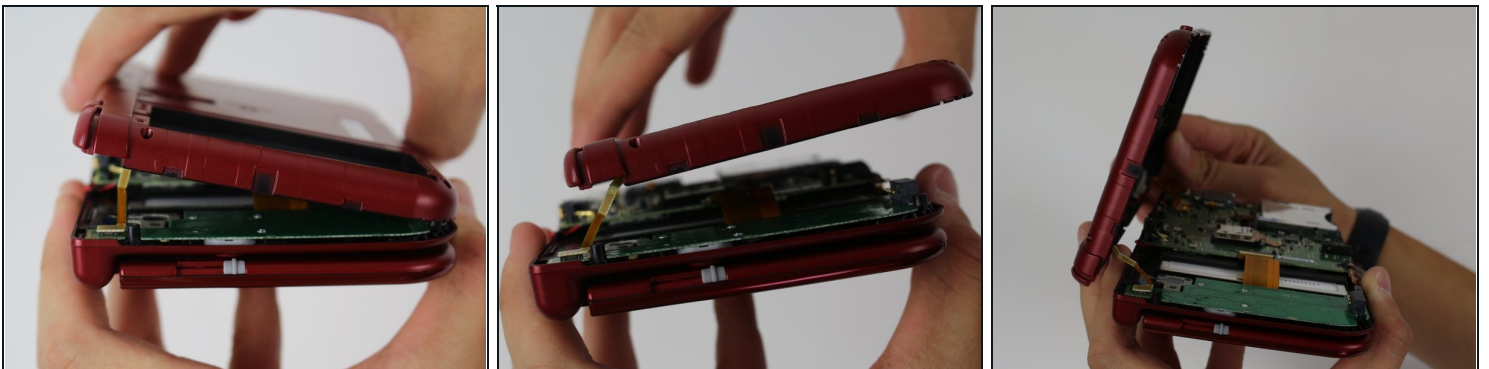


## Step 6



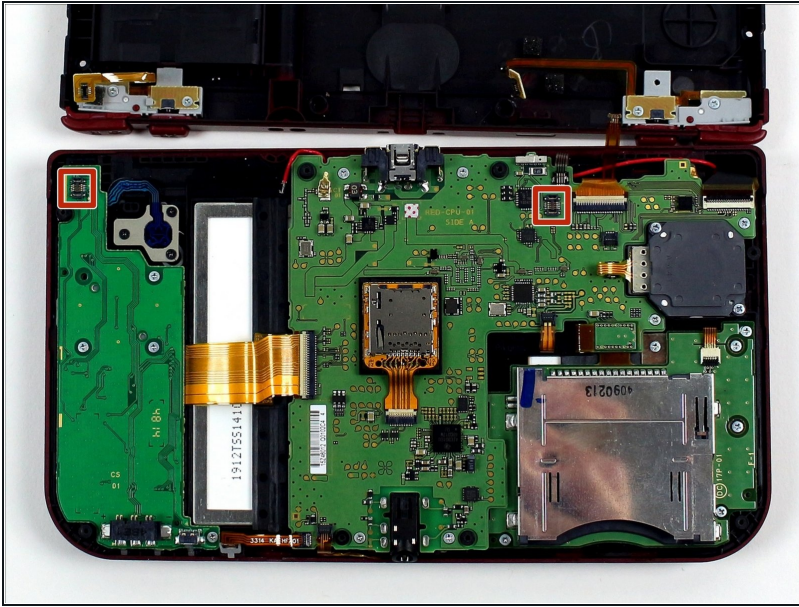
- Using tweezers, carefully pop out the rubber bumpers located at the top side of the 3DS. Removing them will reveal another two 6mm screws. Remove these screws using a JIS #000 as well.

## Step 7



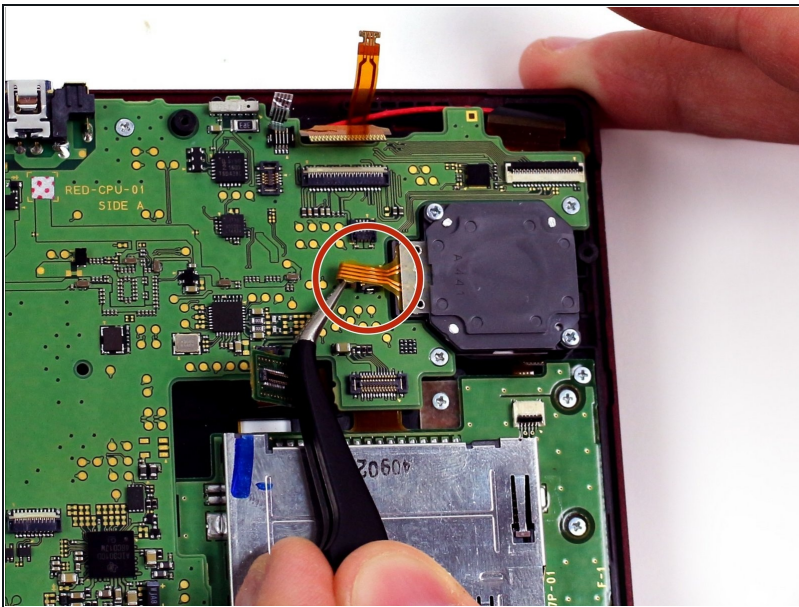
- To separate the cover, carefully lift it up and away from the hinges (in order to clear the headphone port), then pivot it towards the hinges to expose the circuit boards.  
⚠ Don't fully remove the cover yet, or you may damage the delicate ribbon cable that still connects it to the motherboard.

## Step 8



- Use a pair of tweezers to lift away the two plugs that latch the L/R/ZL/ZR button ribbons to the motherboard. You can now remove the back cover completely and set it aside.

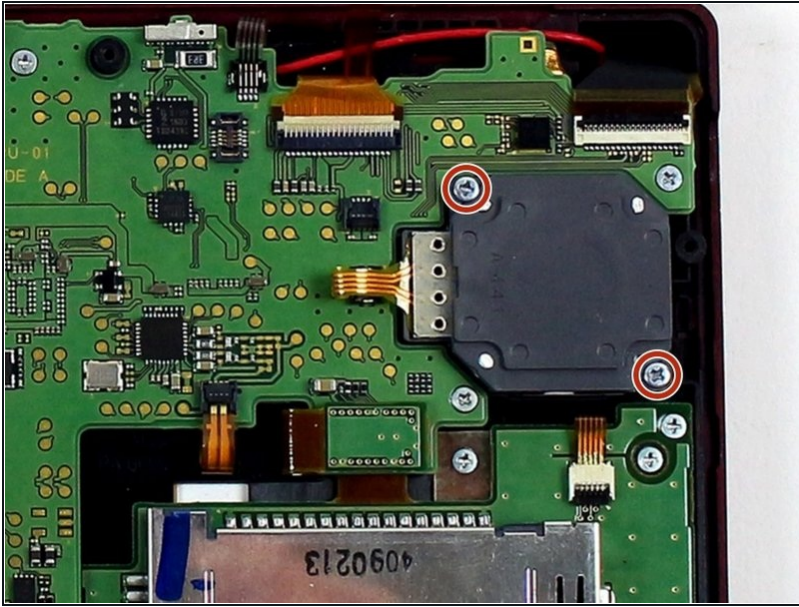
## Step 9



- Use tweezers to flip up the small, hinged locking flap in order to unlock the [ZIF connector](#) securing the circle pad ribbon.
- Slide the ribbon out of the ZIF connector.

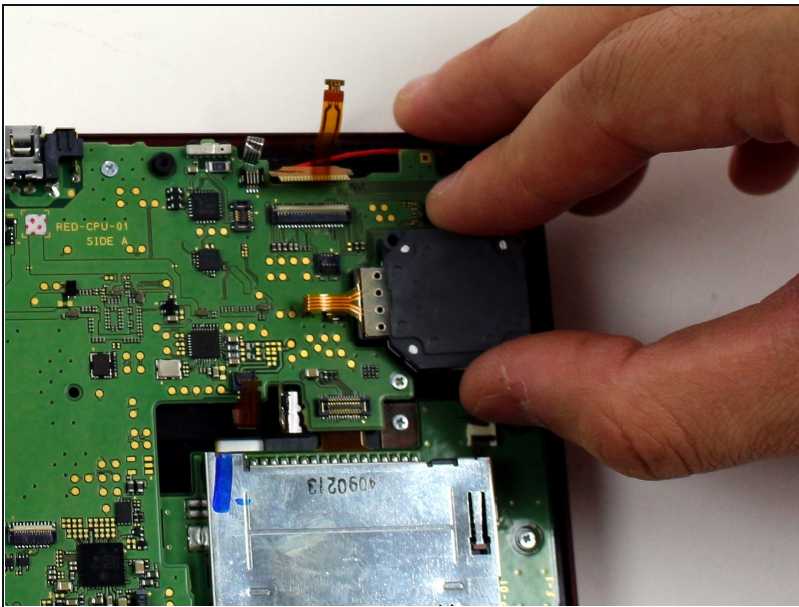


## Step 10



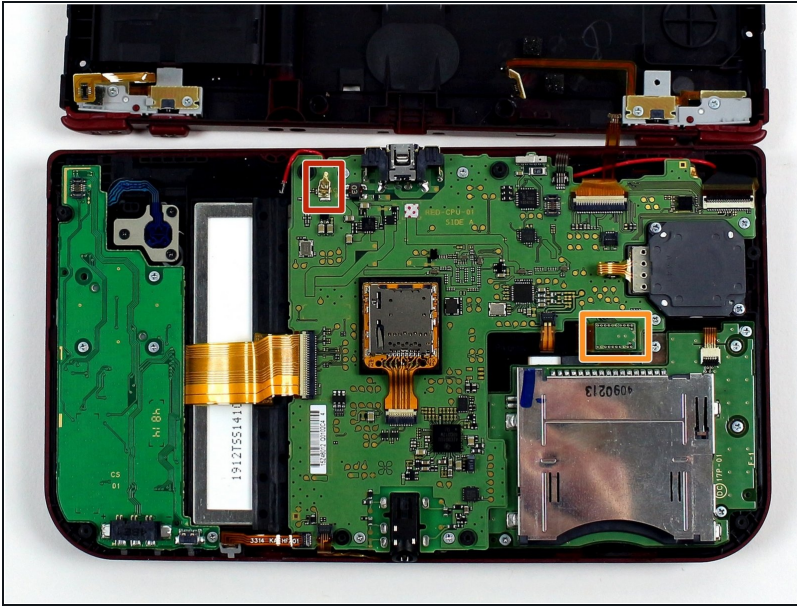
- Using a JIS #000 screwdriver, remove the two 8 mm screws securing the circle pad.

## Step 11



- Lift the circle pad casing upward to remove it. There will be some friction, but it should not require excessive force.

## Step 12

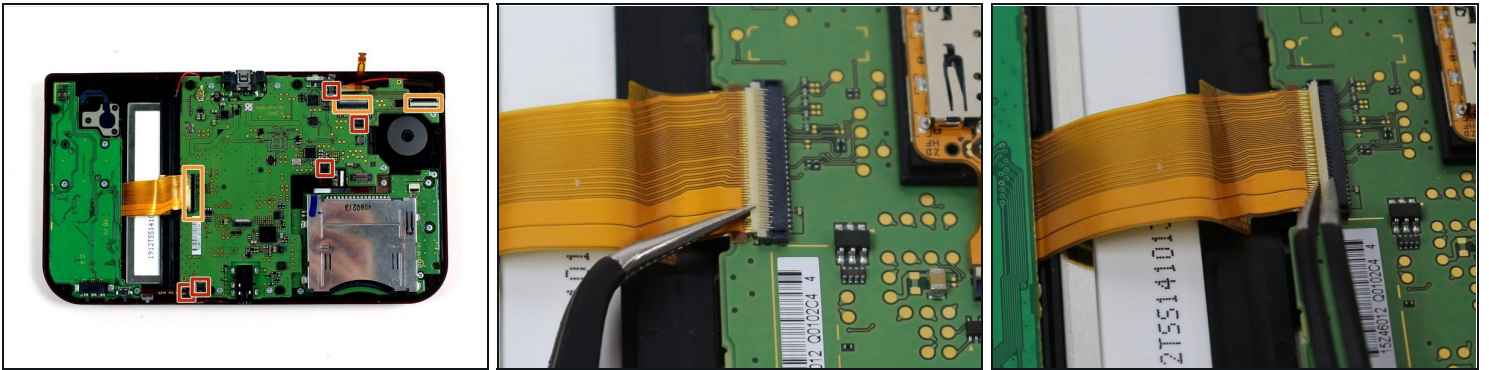


- Locate the gold terminal plug with a red cable at the top left of the motherboard. Using your fingers, carefully pull the plug straight upward to remove.
- Use a pair of tweezers to disconnect the single ribbon connector.

⚠ Don't do what we did -- be very careful **not** to pull on the red cable.

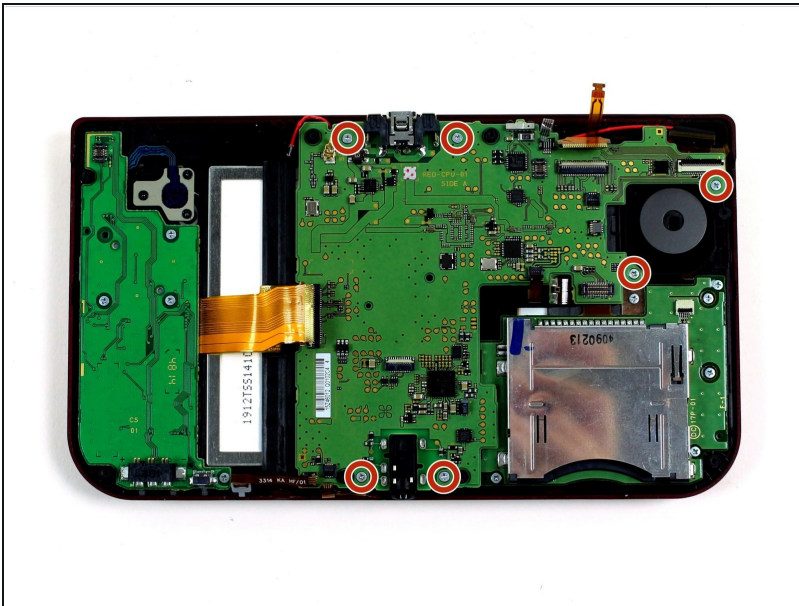


## Step 13



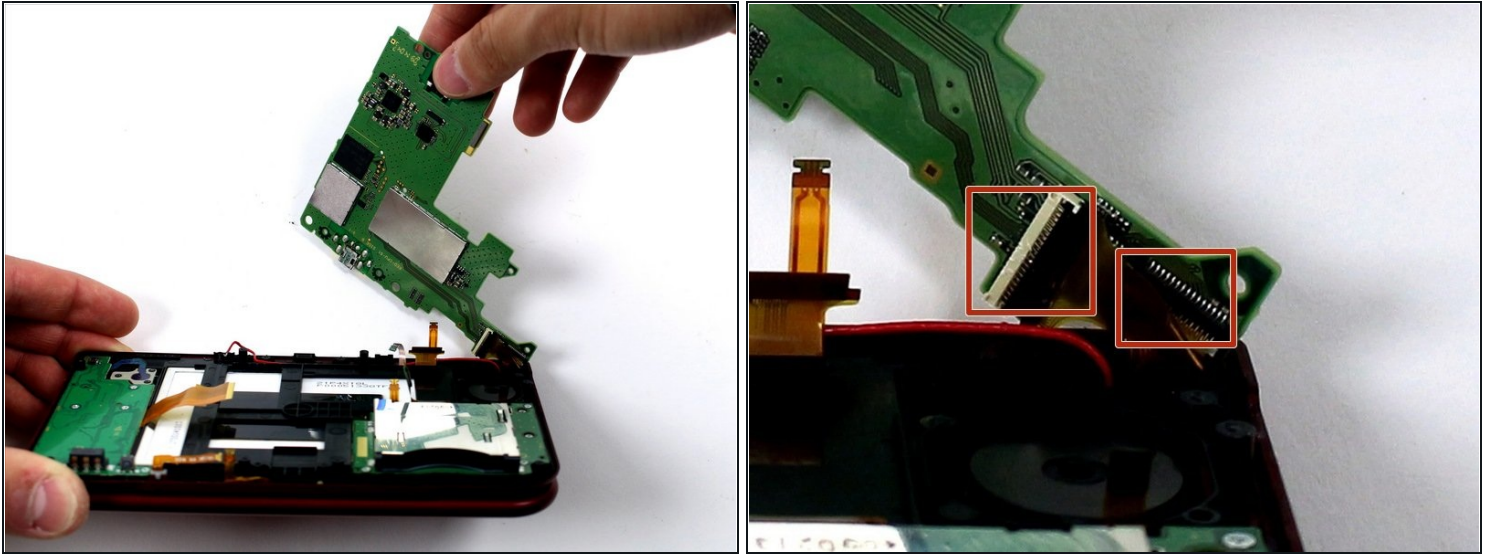
- Using tweezers, gently pull the five marked ribbons out of the ZIF connectors along the sides of the motherboard.
  - ⚠ These ZIF connectors are held in place by friction and do **not** have locks—lifting the flaps on these connectors will break them! Note that in some models the upper-most connector may have a lock.
- Three of the ribbon connectors have plastic clamping flaps that cover the ribbon to prevent slippage. Use the tweezers to flip them up before ribbon removal.
- ☑ When reassembling the device, be sure to flip the ZIF clamps back down.
- ⓘ While the SD card reader is shown as removed in this photo, it is optional for the removal of the motherboard.

## Step 14



- Using a JIS #000 screwdriver, remove six 4mm screws along the edges of the motherboard.

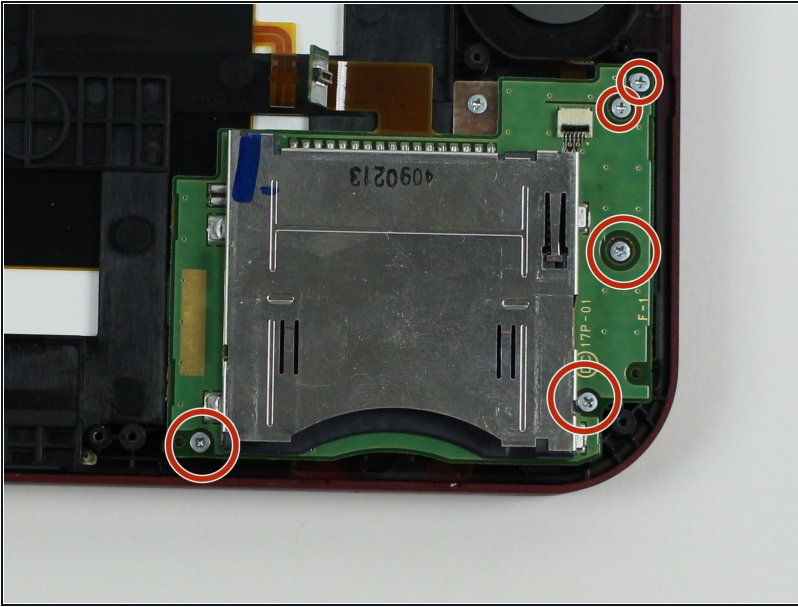
## Step 15



- Carefully pivot the motherboard 90 degrees toward the hinges to reveal two more ZIF connectors on the underside of the motherboard.
- Both have latches that must be flipped up. The left, longer latch is black; the right, shorter one is white. Flip up the flaps, slide the ribbons out and remove the motherboard.
- ① Note which way the ribbons slide into their connectors carefully, as they are different.

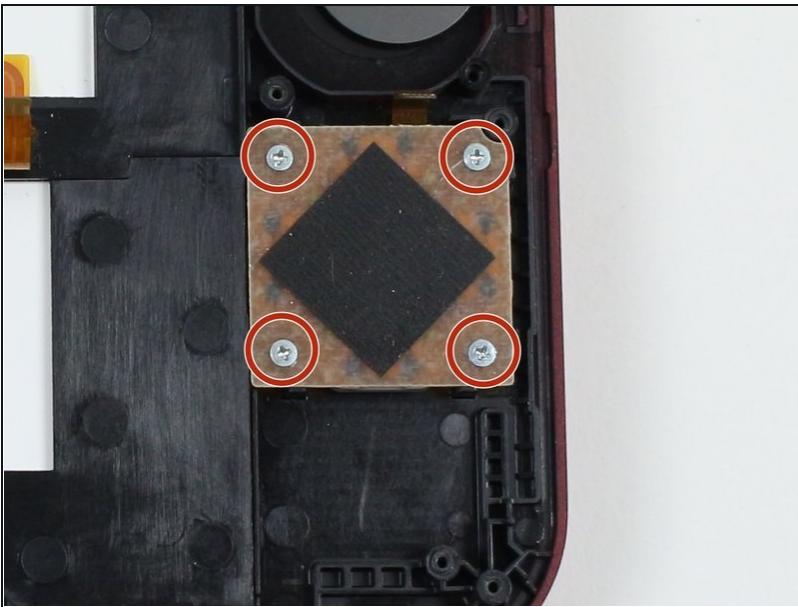


## Step 16 — Game Card Reader



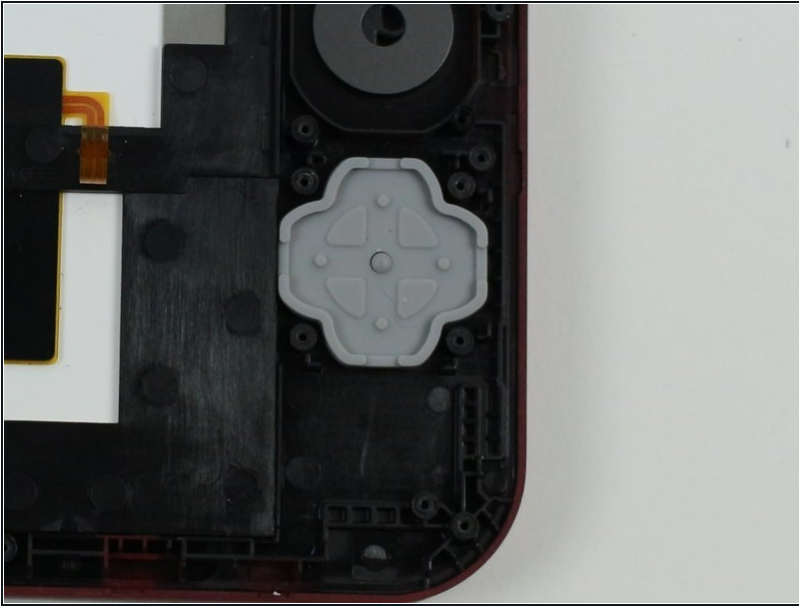
- Remove five 5mm screws from the game card reader panel using a JIS #000 screwdriver.
- The game card reader can now be removed and replaced.

## Step 17 — Directional Pad



- Using the JIS #000, remove four 3mm screws from the square panel.
- Remove the panel by lifting it upward.

## Step 18



- Pry off the gray rubber covering.
- Take out the directional pad using tweezers and replace.

---

To reassemble your device, follow these instructions in reverse order.