



Jawbone Big Jambox Speaker Replacement

Do you have a broken speaker? Fix it here!

Written By: Taryn Kelley



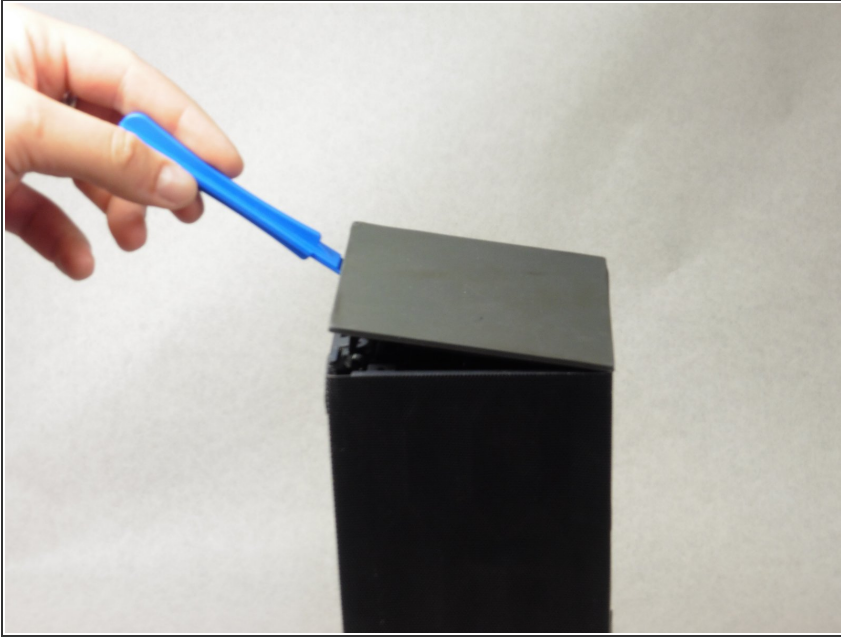
INTRODUCTION

If your speaker is not working, it may need to be replaced. This guide requires having a new, compatible speaker to replace the broken one with.

TOOLS:

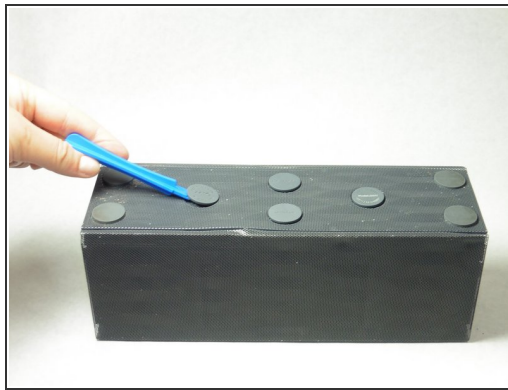
- [Soldering Iron](#) (1)
 - [Utility Scissors](#) (1)
 - [iFixit Opening Tools](#) (1)
 - [T6 Torx Screwdriver](#) (1)
-

Step 1 — Outer Case



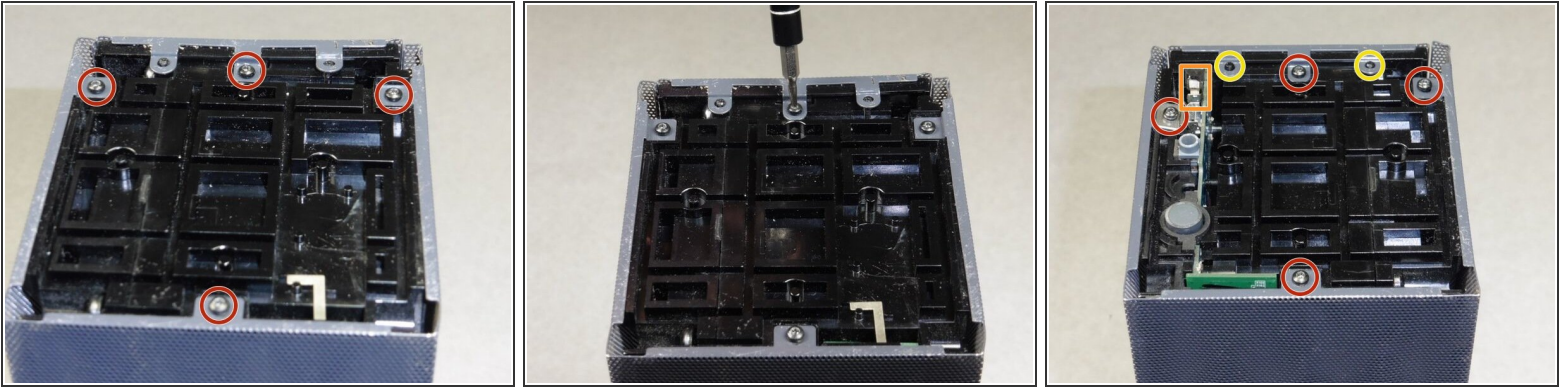
- Remove both end caps by putting a plastic opening tool in the center of the seam. Work around the edges to pry the end caps off completely.
- ⓘ Due to interior clips holding the end caps in place, use caution when applying force.

Step 2



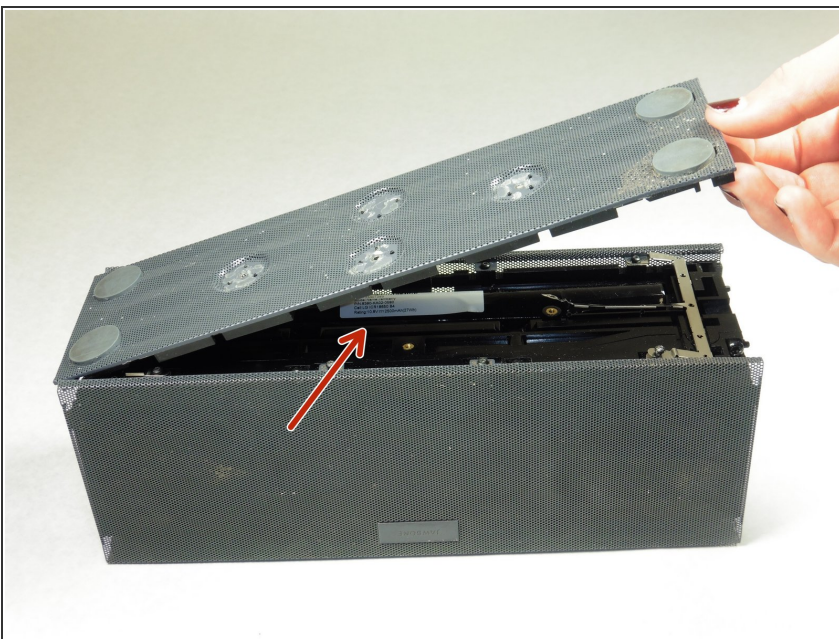
- Turn the Jambox upside down. Peel the indicated rubber tabs off, using a plastic opening tool if necessary.
- ⓘ You may want to only take the tabs half way off to avoid re-gluing when reassembling.
- Remove the three T6, 7.0 mm screws under each rubber tab.
- ✦ Because the screws are a different length, set the screws aside.

Step 3



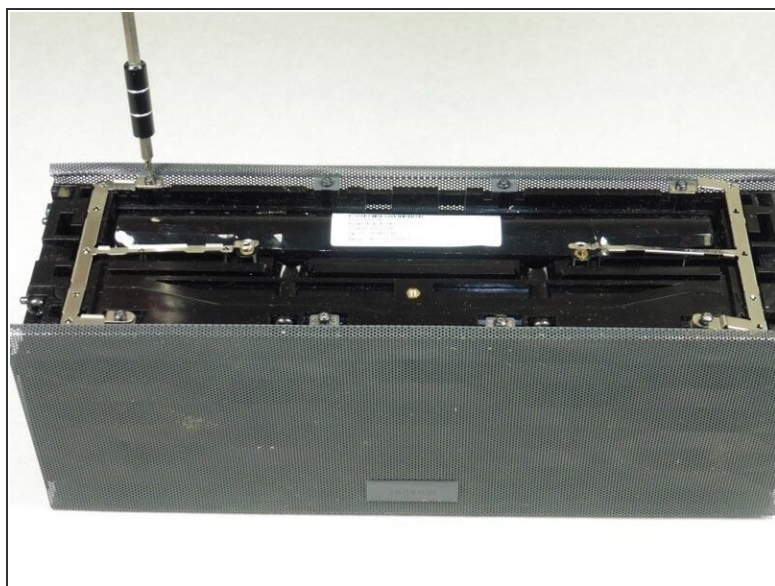
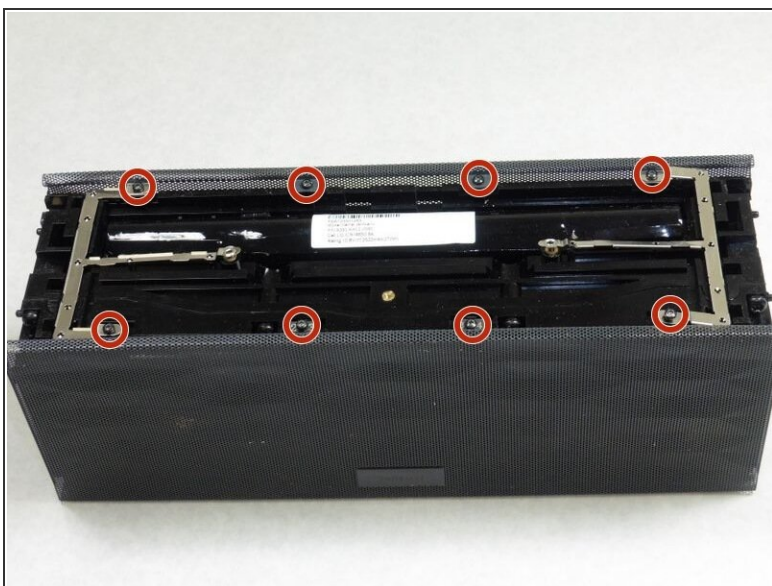
- With the Jawbone logo facing towards you and with correct orientation, place the Jambox with the left end cap facing upward.
- Unscrew indicated T6 9.7 mm screws.
- Gently loosen the tabs from their anchor points so the bottom may be removed.
- Flip the Jambox so the other end cap is facing up. The USB cable is on this side (metal grounding clip, indicated in orange). Repeat the above two steps.

Step 4



- Pry up the bottom panel by lifting from the device.
- Pull the bottom up. This may take a bit of force as the bottom is glued to device.
- Once removed, the battery will now be visible.

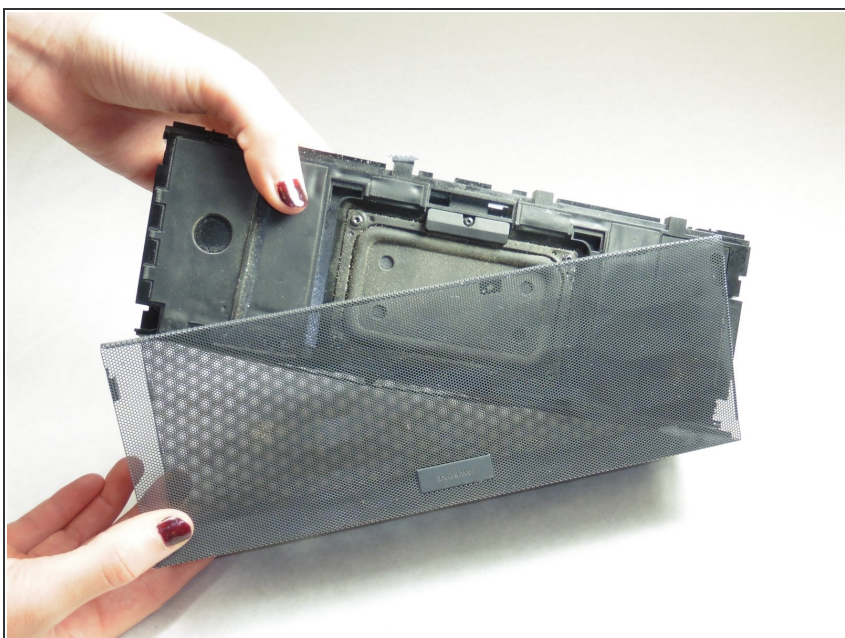
Step 5



i Before unscrewing, take a picture of the top view. That way, when you're reassembling the device, you'll know the orientation of the metal grounding plates.

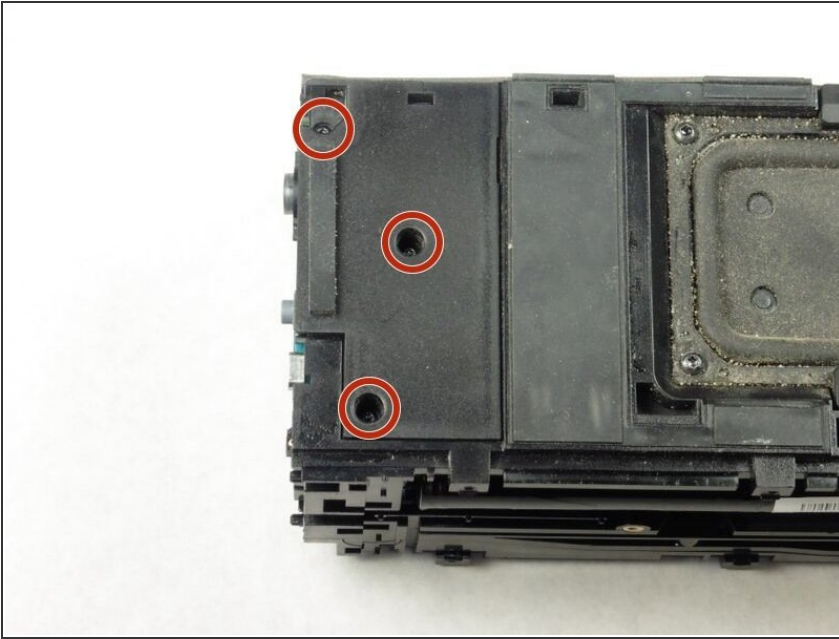
- Unscrew the eight indicated T6 9.8 mm screws. Remove metal grounding plates.

Step 6



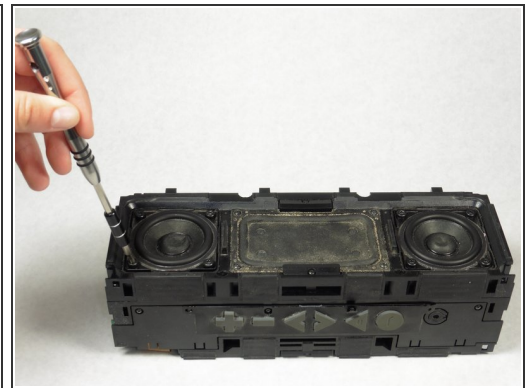
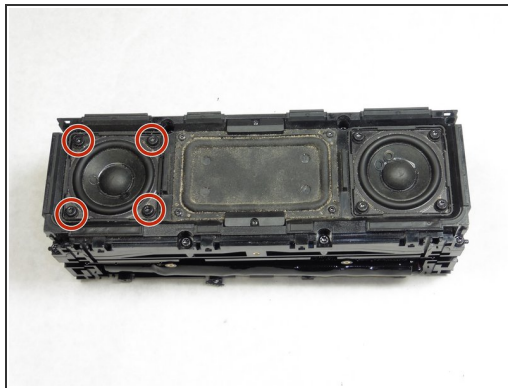
- Once all eight screws are removed, pry the sides of the Jambox to lift the body from its shell.

Step 7



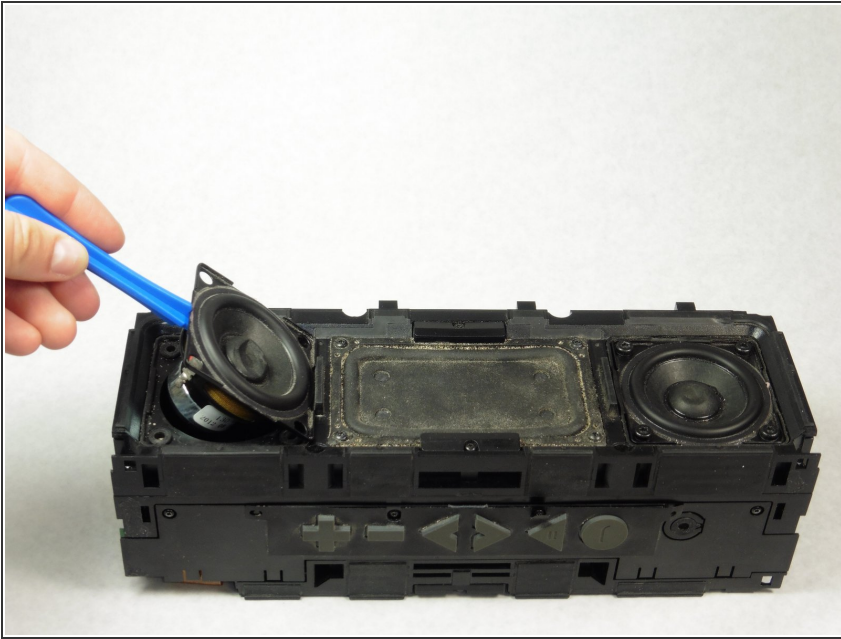
- With the battery facing forward, remove the three indicated T6 9.5 mm screws.
- Once the screws are removed, lift up the small plastic plate, revealing the auxiliary board underneath.

Step 8 — Speaker



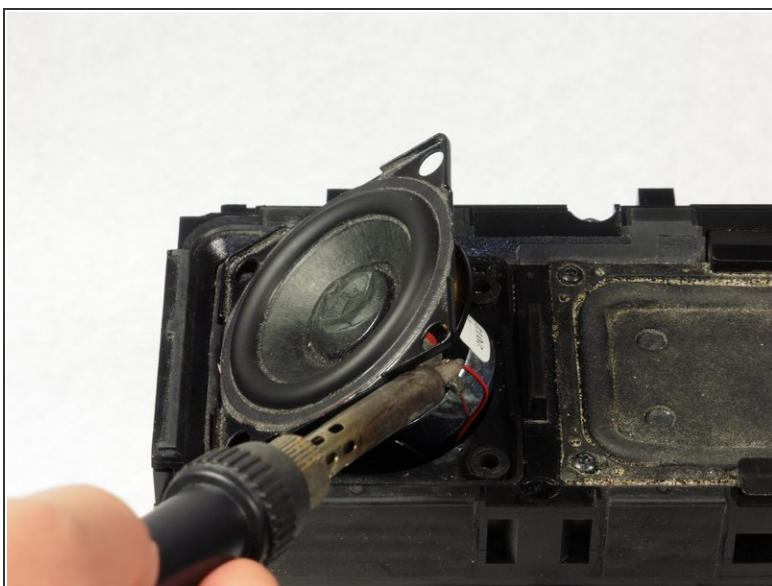
- Place the disassembled Jambox with the speakers facing up.
- Locate the screws around the broken speaker.
- Use a T15 screwdriver to remove the four 12.1 mm screws around the broken speaker.

Step 9



- Using a plastic opening tool, pry the speaker out of the Jambox.

Step 10



- Desolder the wires from the speaker terminal in the Jambox.
- ☞ Detach the round speaker from its square frame, and save the square frame for the replacement speaker.
- ⚠ Use caution when operating a soldering iron due to extreme heat.
- ℹ For instructions on how to solder and desolder, take a look at the [soldering guide](#).

To reassemble your device, follow these instructions in reverse order.