



SKYTEX SP1020 Motherboard Replacement

This guide will provide you with the necessary information needed to remove and replace the motherboard of your device.

Written By: yuriy16899



INTRODUCTION

By the end of the guide you will have the ability to replace the motherboard of your device.



TOOLS:

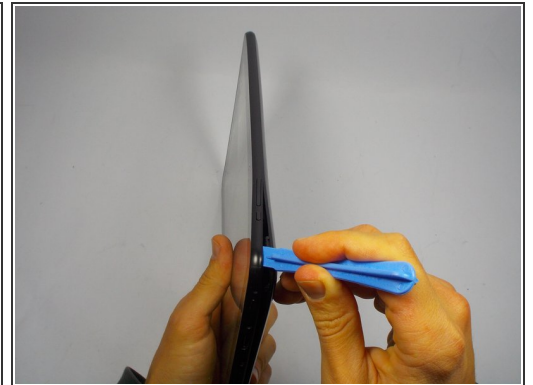
- [Tweezers](#) (1)
 - [Spudger](#) (1)
 - [Soldering Iron](#) (1)
-

Step 1 — Rear Case



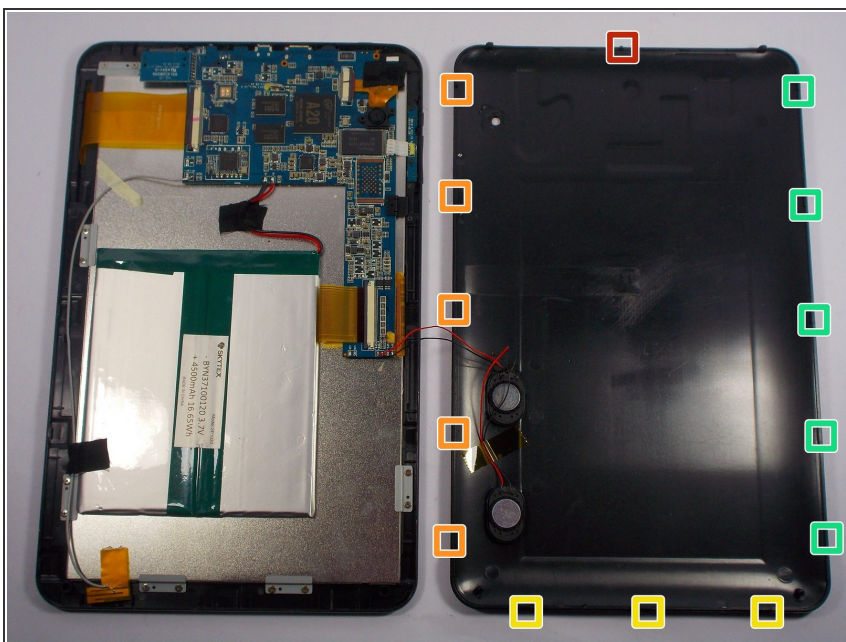
- Prior to any repairs make sure that you are familiar with the device as well as the location of its buttons and ports.
- ⓘ Turn off device prior to continuing to further steps.

Step 2



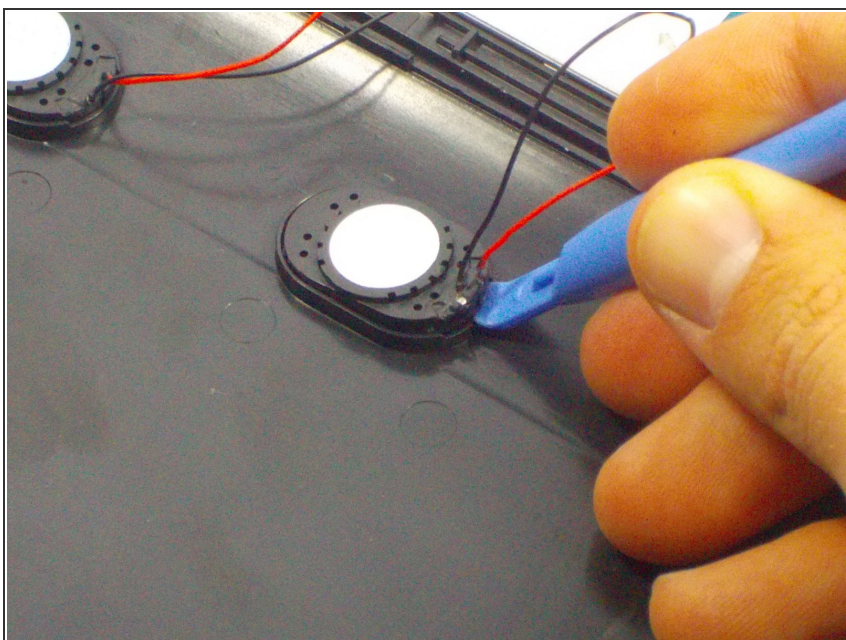
- ⓘ Set the tablet back panel facing down, with the SKYTEX logo facing you. You will find that this step will start from the right side of the device.
- Insert the plastic opening tool between the bottom seam of the back panel and the micro SD port. The tool's edge should point toward the rear panel to prevent any scratching or damage.
- Follow up with the plastic opening tool, releasing the clips as you go all the way around the device.

Step 3



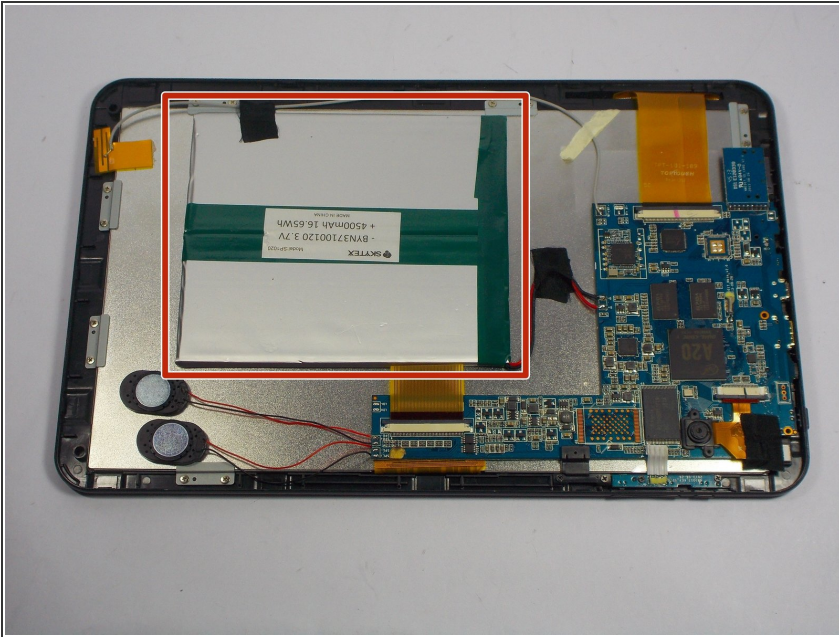
- The clips will be released in the order specified as the spudger tool is moved along the seam around the device.

Step 4



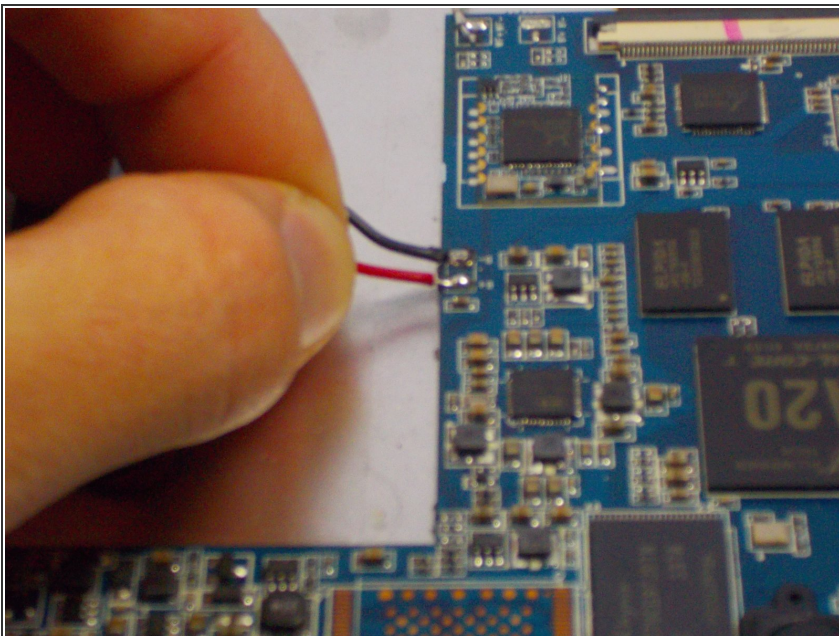
- Use a plastic opening tool to pry the speakers out of the rear case.
- The rear case will now be free from the rest of the device.

Step 5 — Battery



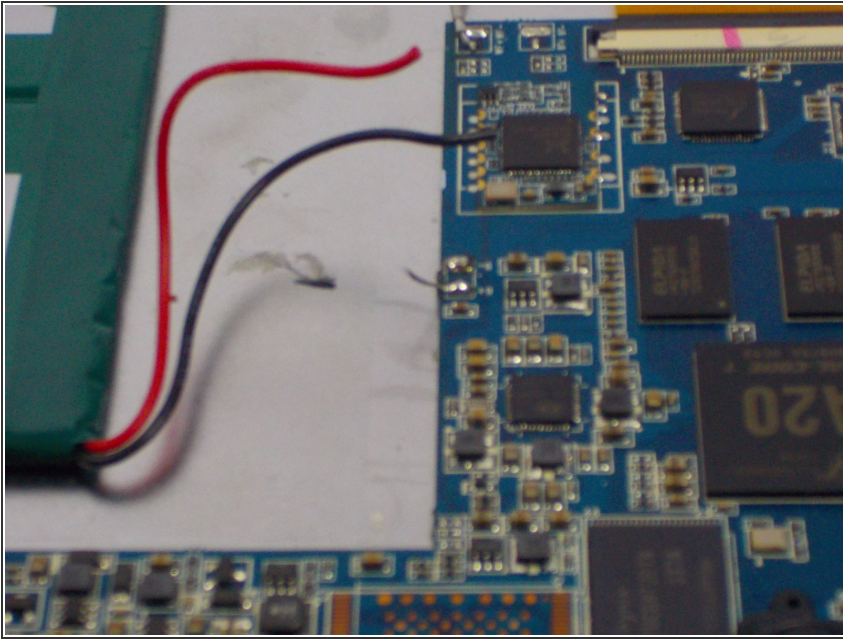
- Locate the battery.

Step 6



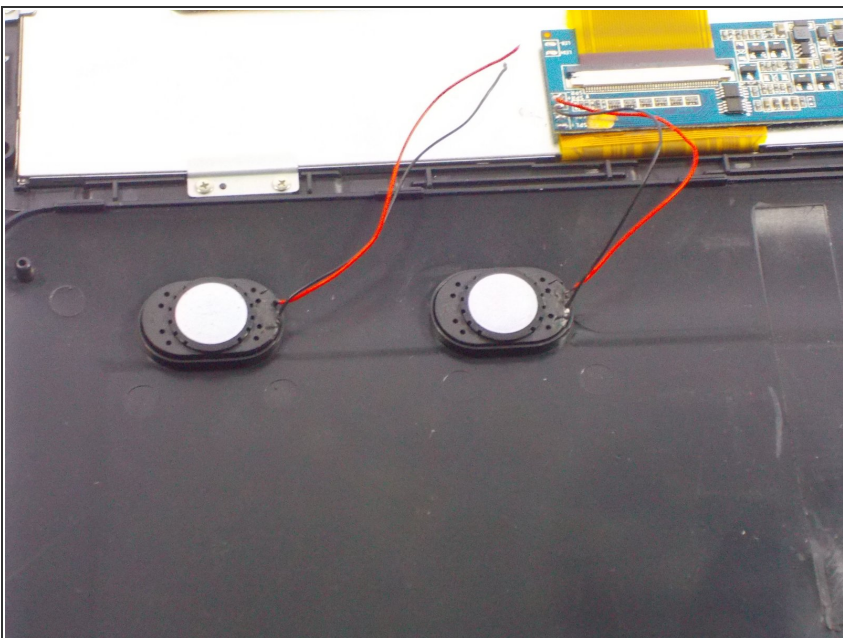
- Use a soldering iron and desoldering braid to desolder the red and black motherboard battery connections.

Step 7



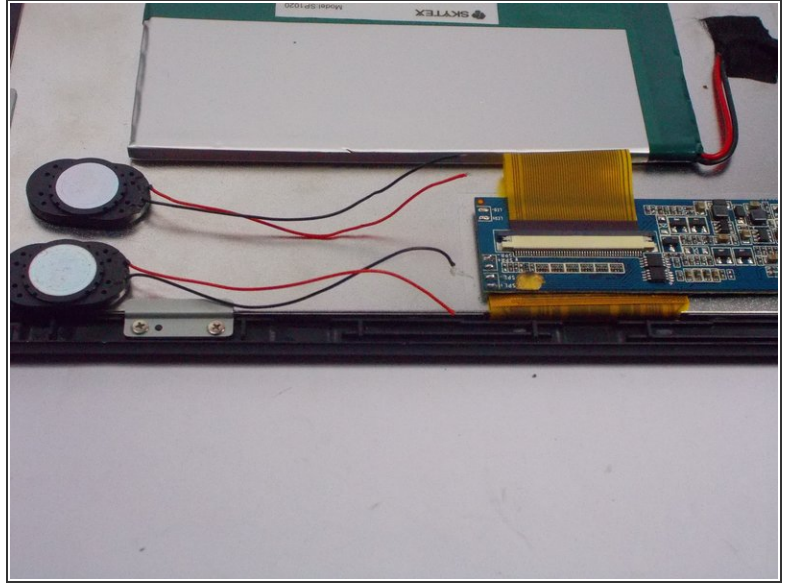
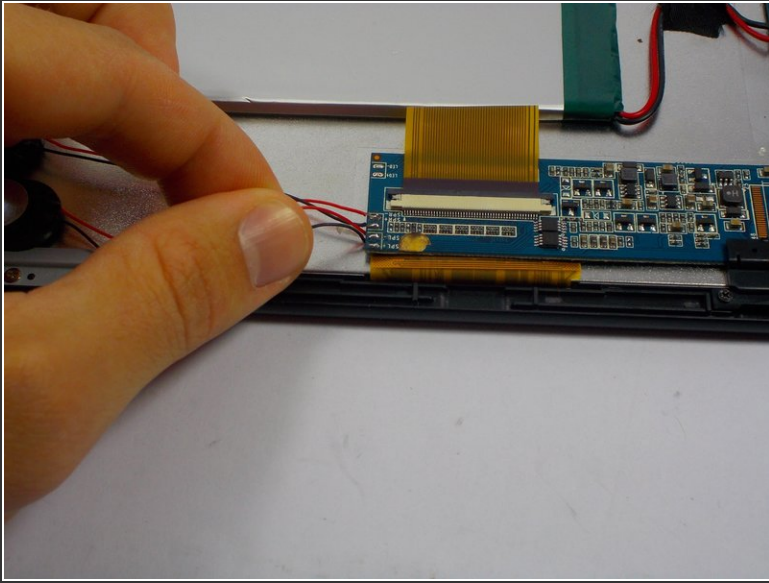
- Gently lift the battery up and out of the device.

Step 8 — Speakers



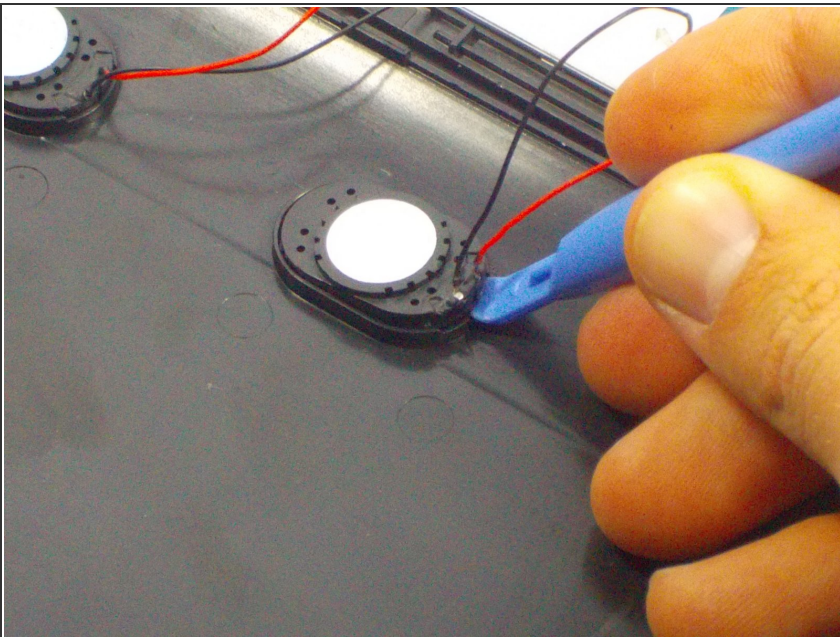
- locate the speakers

Step 9



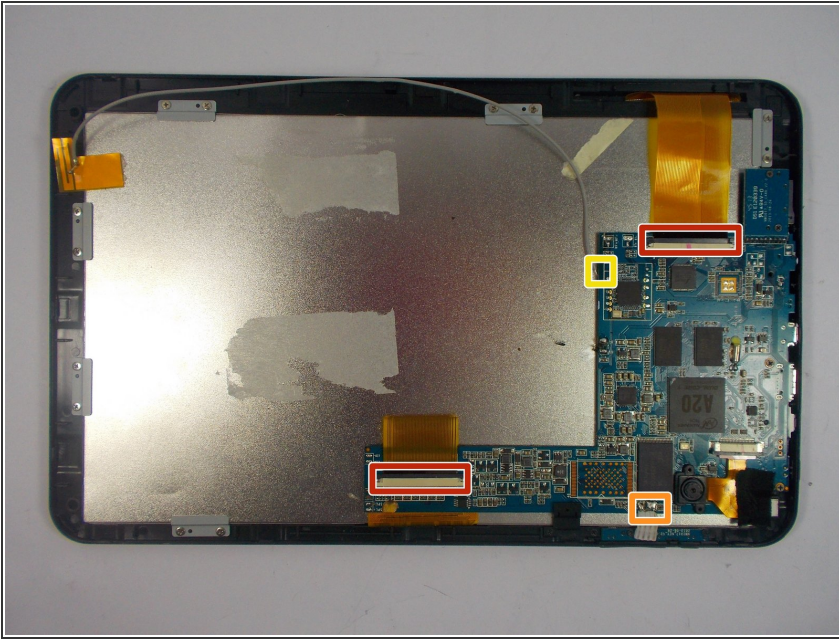
- Use a soldering iron and desoldering braid to desolder the two sets of red and black wires.

Step 10



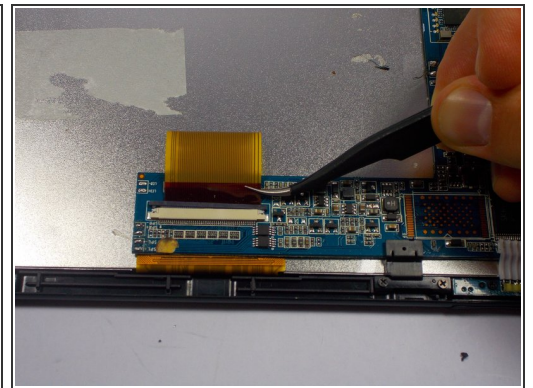
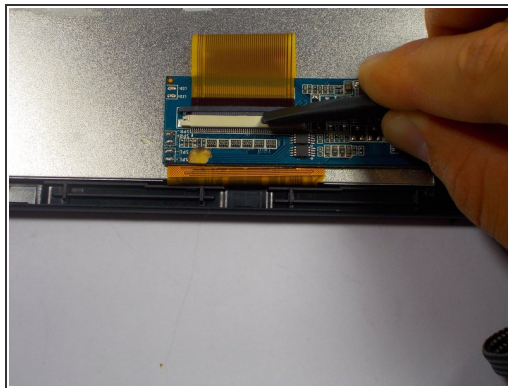
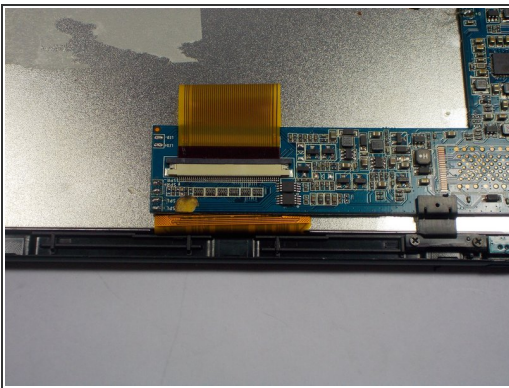
- Use a plastic opening tool to pry the speakers out of the rear case.

Step 11 — Motherboard



- **i** Become familiar with the motherboard including its attachable components and wires.
- The image shows and specify the order of the major components that must be removed before moving on.

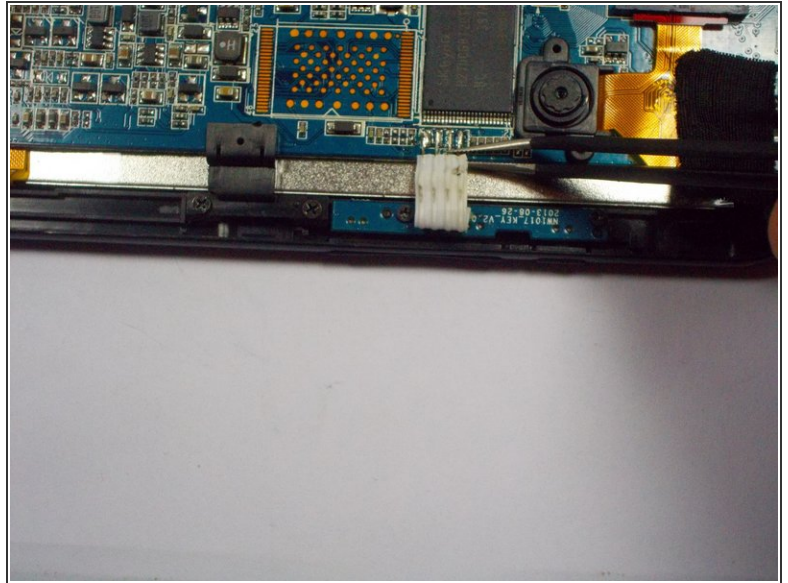
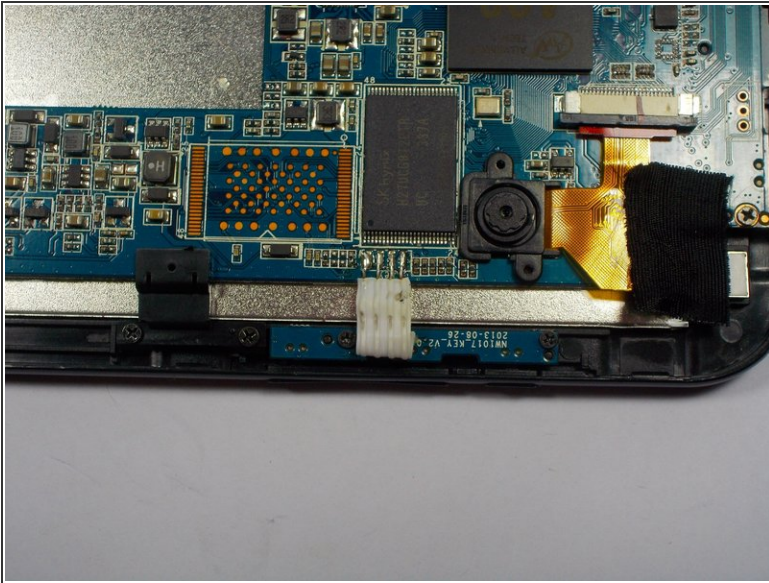
Step 12



- Locate the two ribbon cables that will need to be removed.
- Using the spudger tool, slide the black clip over the white housing up. This will release the ribbon cable.
- Once the ribbon cable is loose, the tweezers should be used to slide the cable out.

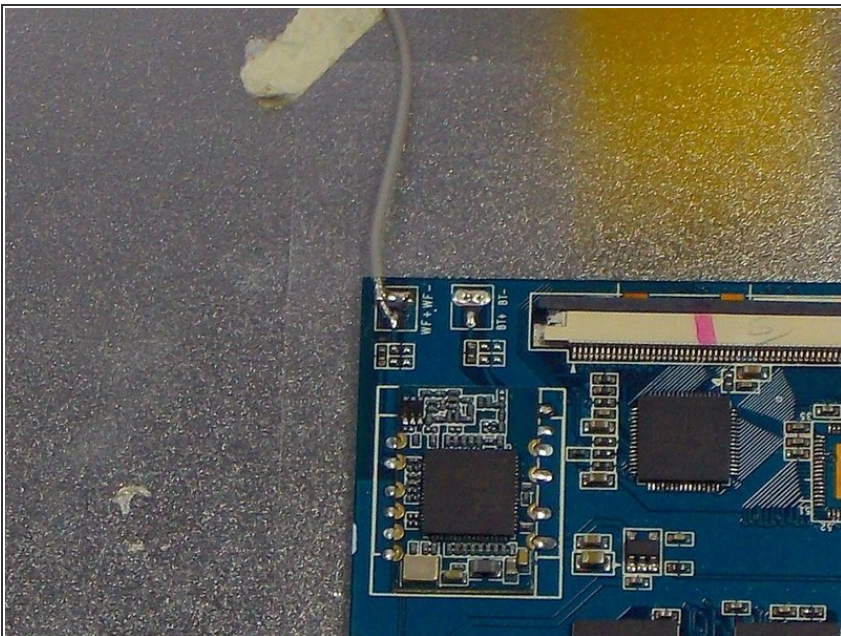
⚠ Don't grab the ribbon cable too hard, to avoid any damage to the cable.

Step 13



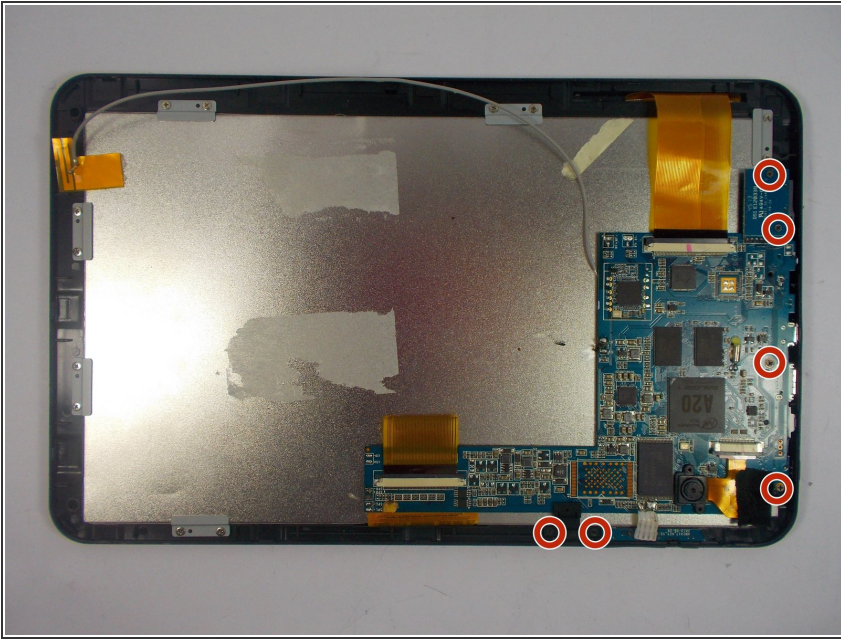
- ① Locate the set of wires with a white coating located at the bottom of the motherboard.
- Using the tweezers carefully remove the cables one at a time from the motherboard.
- ⚠ Avoid any damage to the tips of the wires.

Step 14



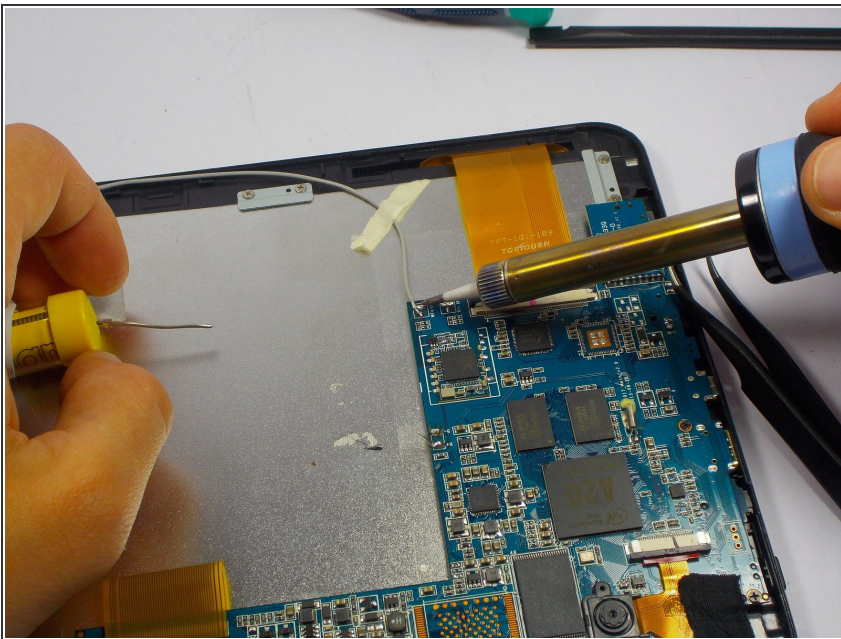
- Using the tweezers remove the single white coated wire from the motherboard with a split at the tip.
- ① When removing the wire, you want to mark one of the tips that's removed first with tape. The motherboard will have a "+" and a "-" sign attached to the wires mark them once removed to help with the reassembling process.

Step 15



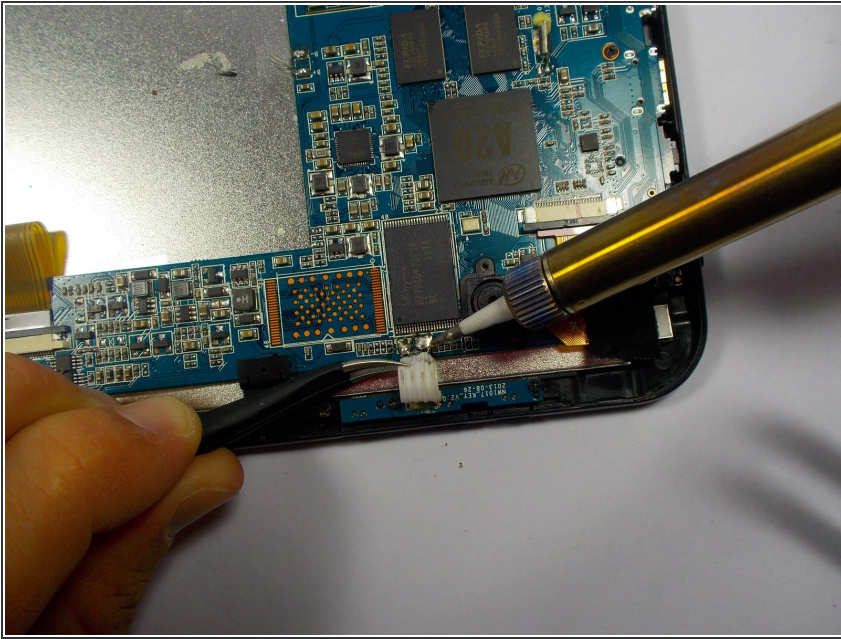
- Using the (3.75mm) Phillips #00 screwdriver remove all of the indicated screws connecting the motherboard to the case.

Step 16



- Reattach the single white coated wire using a soldering kit.
- ⓘ Be sure to solder the positive "+" and negative "-" ports to their corresponding places.

Step 17



- Using a soldering kit attach the set of white coated wires back to the new motherboard.
- ⚠ When soldering the wires, be sure to not let the solder touch between the four tips, to avoid a shorted circuit.

To reassemble your device, follow these instructions in reverse order.