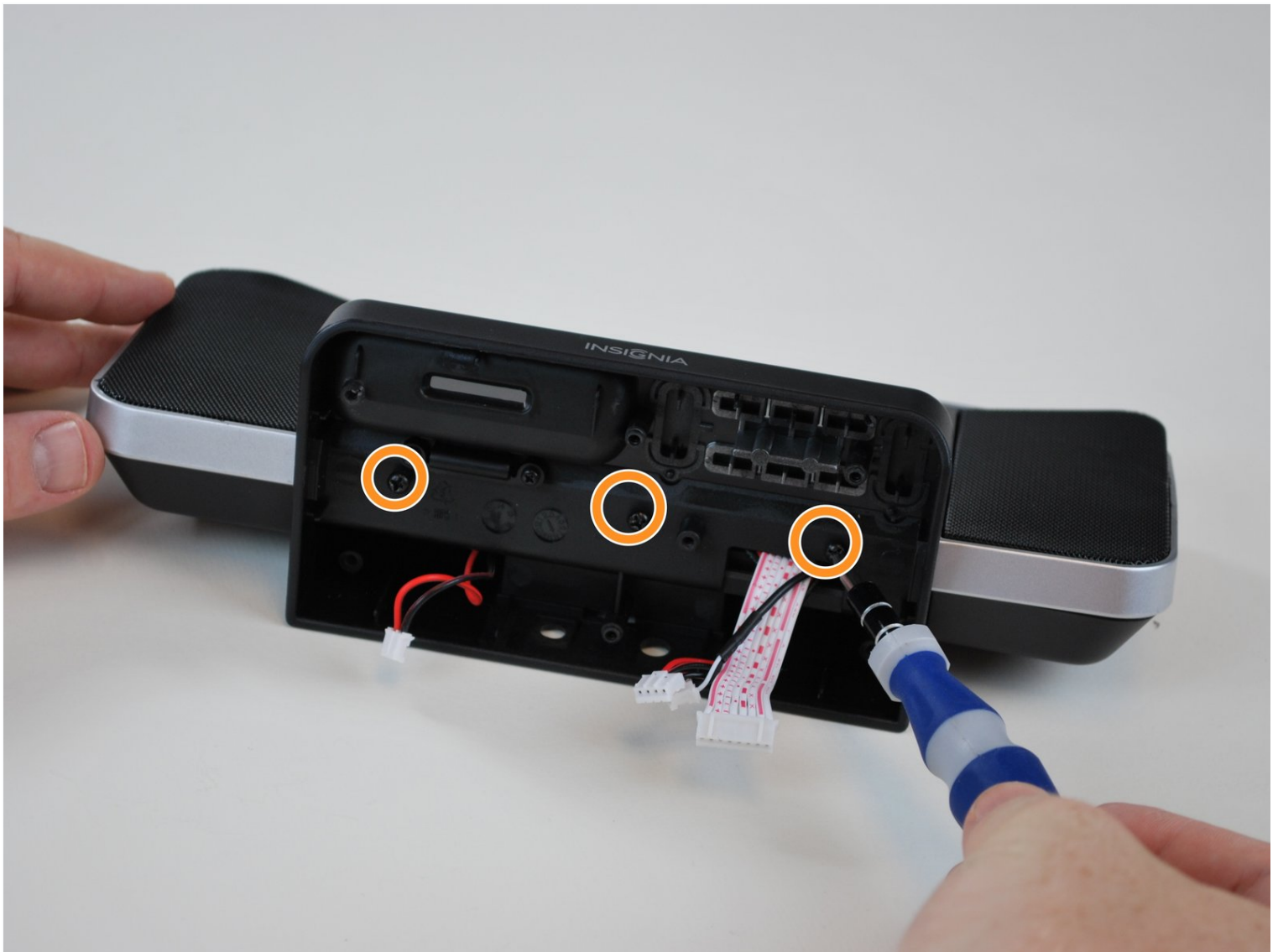




# Insignia NS-CLIP02 Speaker replacement and troubleshooting

This guide shows how to locate and repair...

Written By: Aubrey



# INTRODUCTION

This guide shows how to locate and repair broken connections to the speakers.

## TOOLS:

[Essential Electronics Toolkit](#) (1)

[Metal Spudger](#) (1)

[iOpener](#) (1)

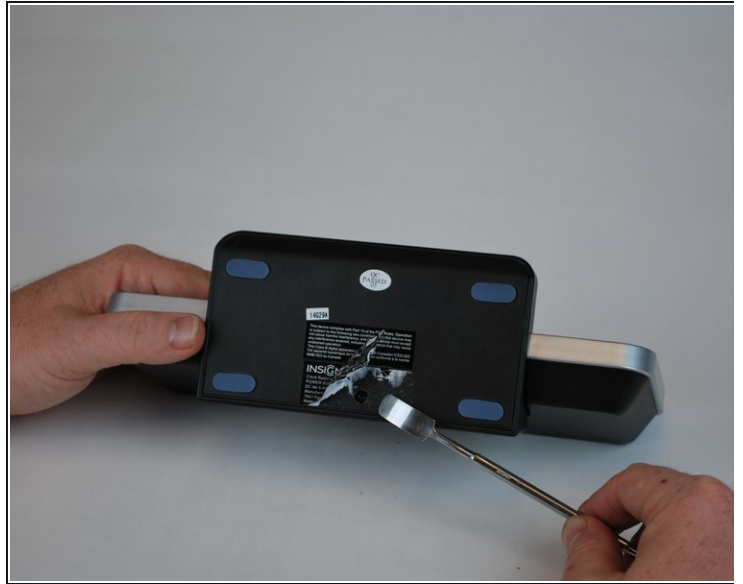
[Philips screwdriver](#) (1)

## Step 1 — Motherboard



- Set the clock radio on the work space so the bottom of the device is showing.

## Step 2



- Use a metal spudger to peel back the adhesive sticker on the bottom of the clock.

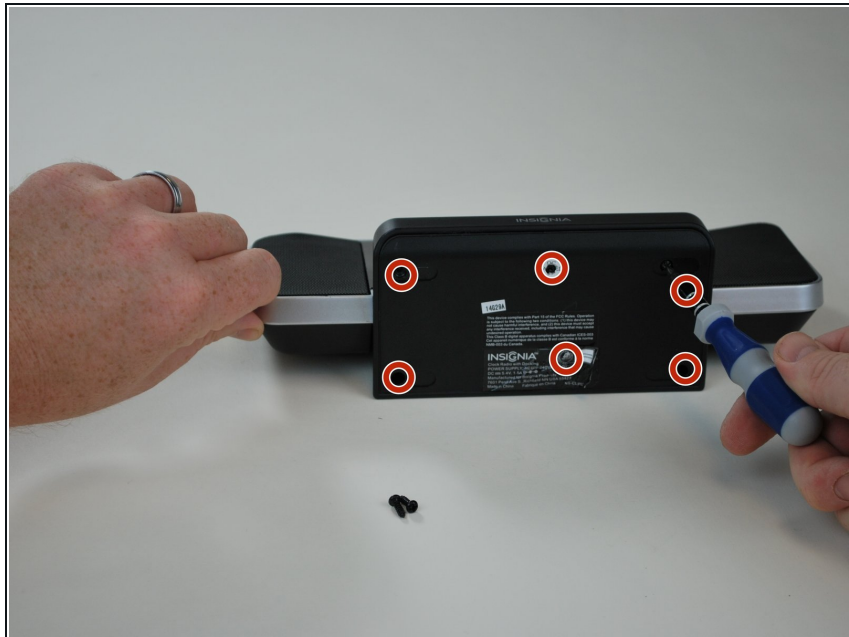
**i** You should see a single screw beneath the sticker.

## Step 3



- Using a plastic opening tool, peel off the adhesive gel stoppers.

## Step 4



- Use a Phillips screwdriver to remove the six 11 mm screws on the bottom of the device.

## Step 5



- Remove the bottom cover from the device to reveal the motherboard.

## Step 6



- Use a Phillips screwdriver to remove the 9.5 mm screw located near the center of the motherboard.

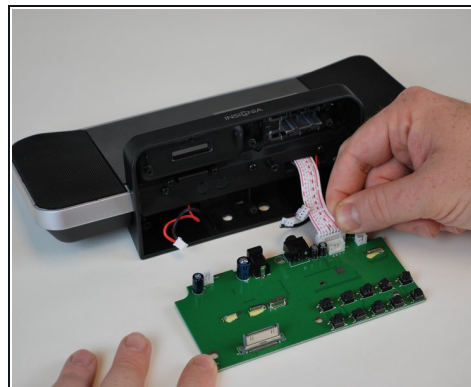
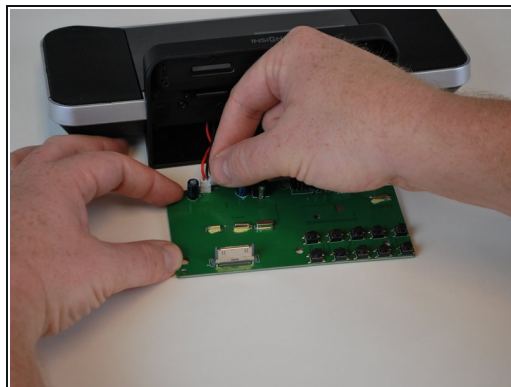
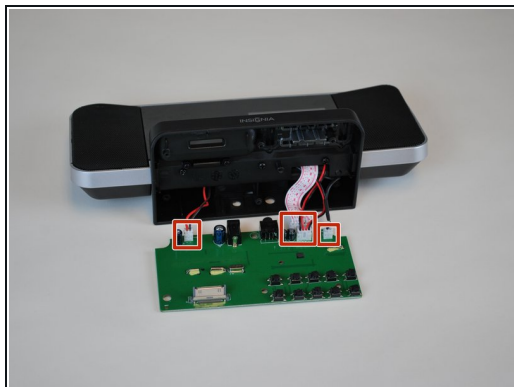
## Step 7



- Lift the motherboard away from the device.

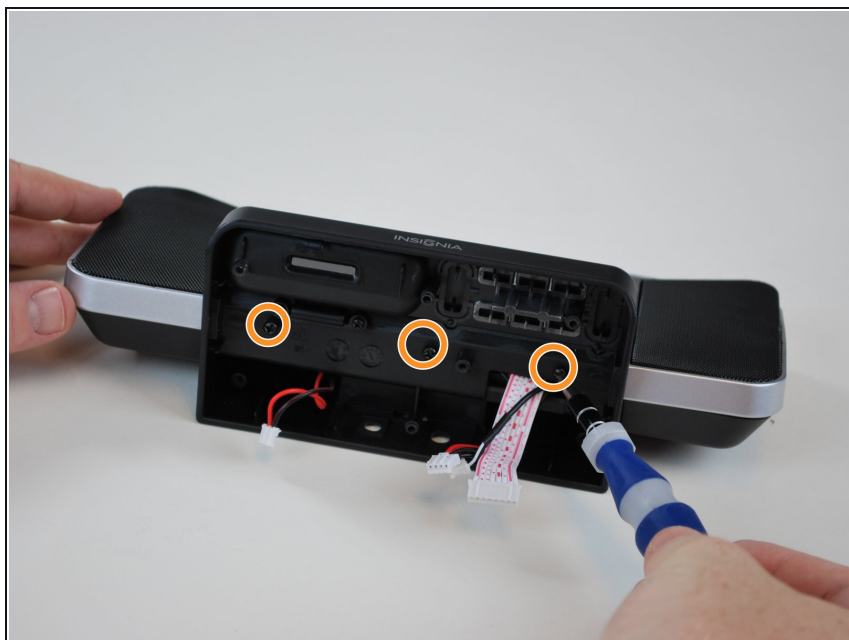


## Step 8



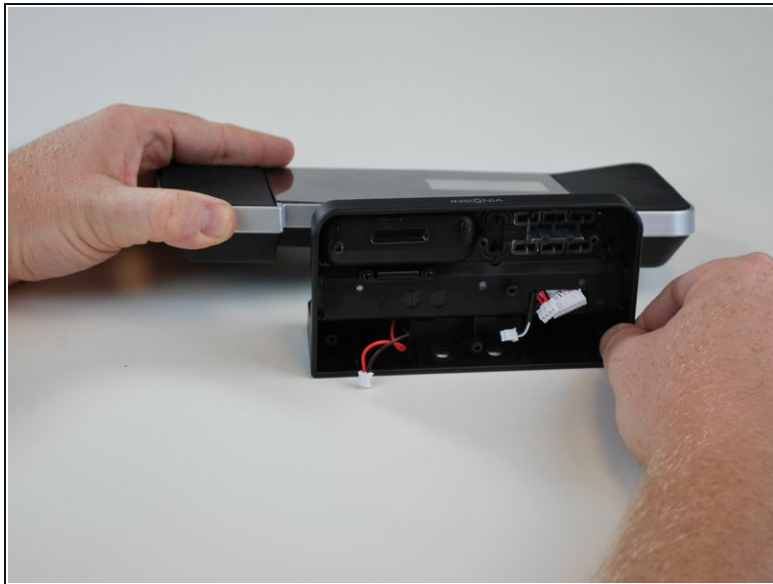
- Disconnect the four cables connecting the motherboard to the device.

## Step 9 — Speaker



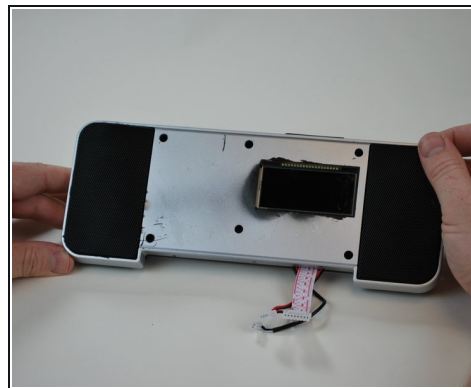
- Remove the three screws located along the center of the base.

## Step 10



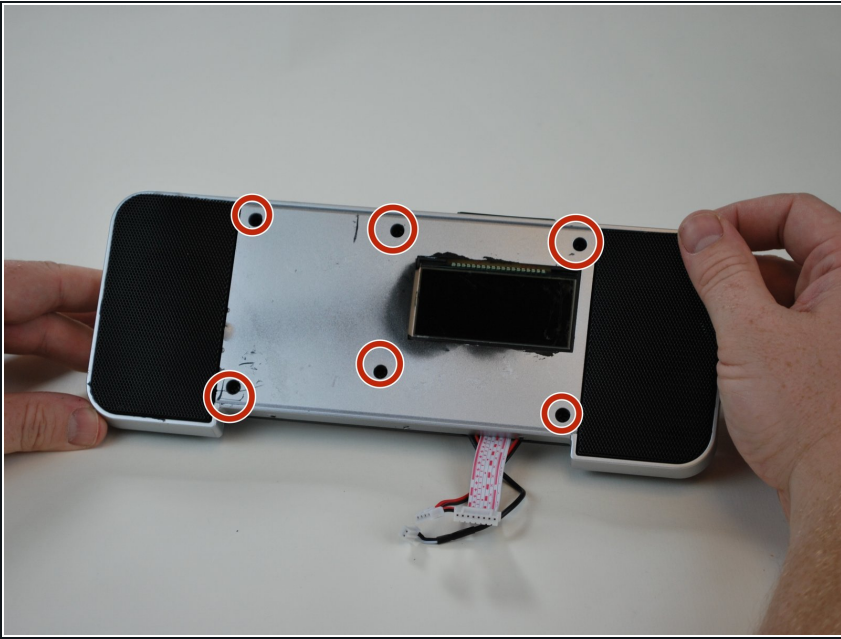
- Remove the base from the display.

## Step 11



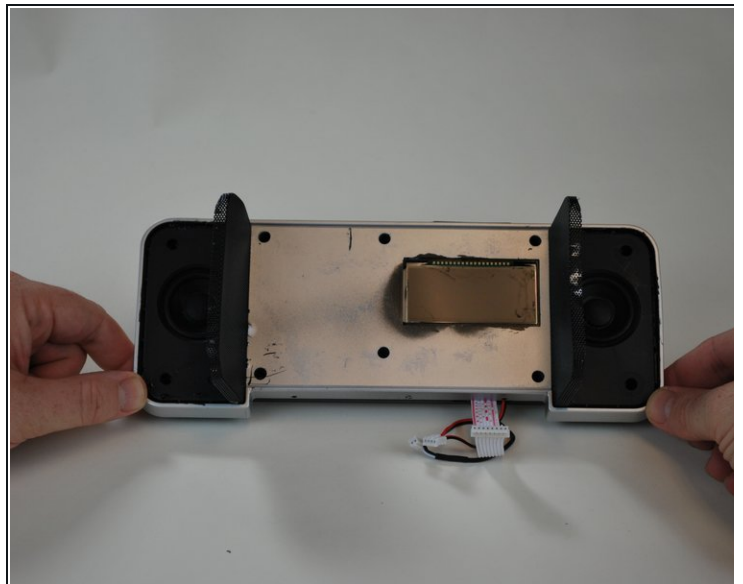
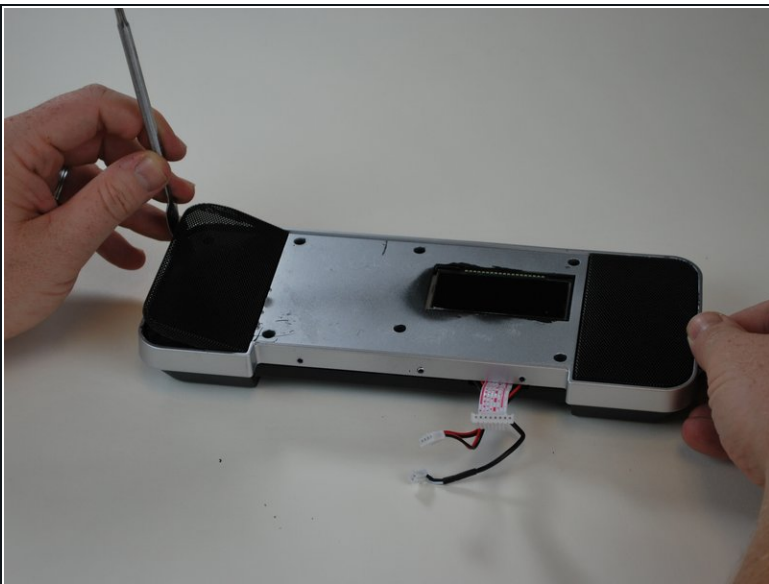
- Using a metal spudger, remove the plastic face plate from the display.

## Step 12



- With a phillips screwdriver, remove the six screws shown pictured to the left.

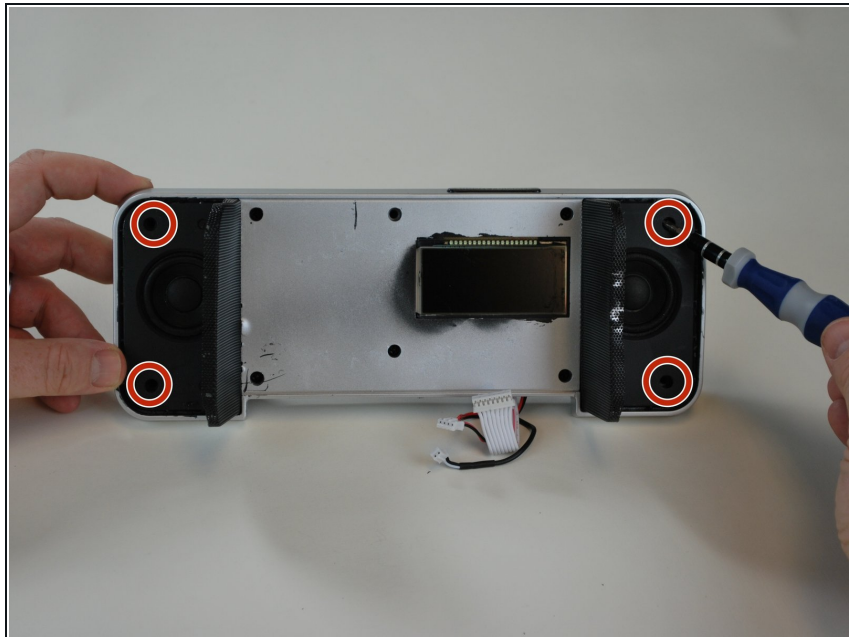
## Step 13



- Using the metal spudger, pry the speaker grilles from the display.

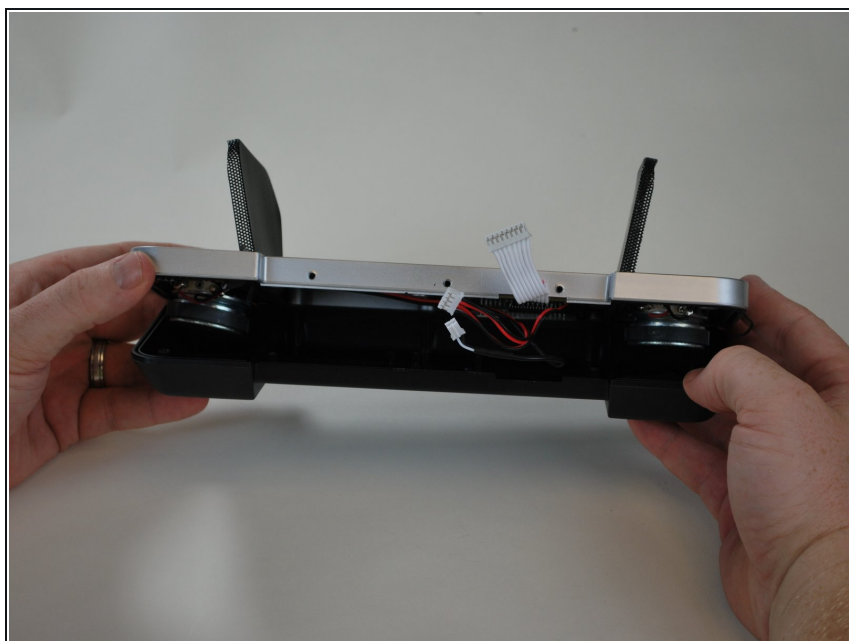


## Step 14



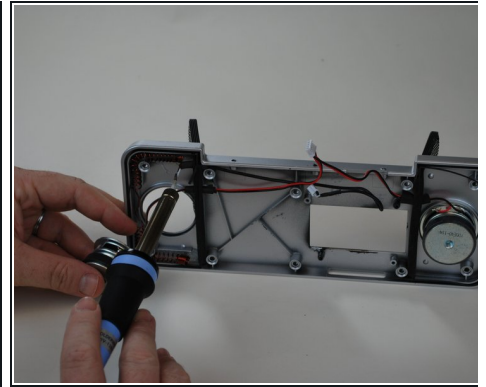
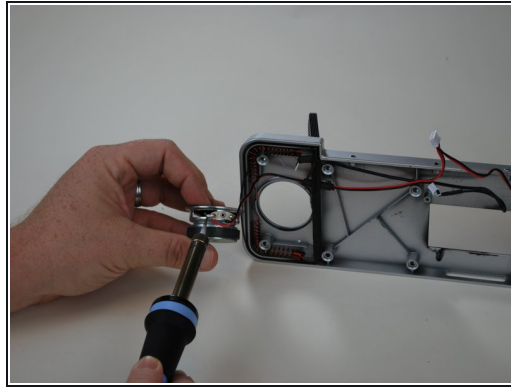
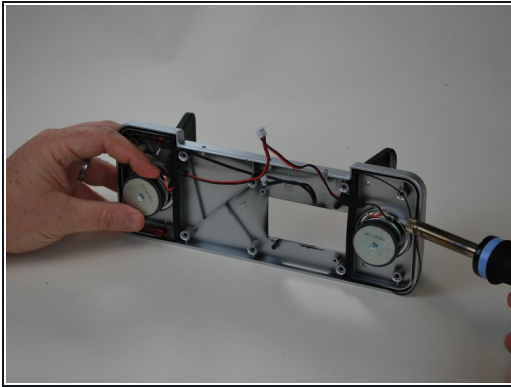
- Using the phillips screwdriver, remove the four screws pictured to the left.

## Step 15



- Separate the two pieces of the display as shown.

## Step 16



- You can see that there are several points where connections to the speaker are soldered.

**i** If all connections are soldered then replacement may be necessary.

---

To reassemble your device, follow these instructions in reverse order.