



iPod Mini Battery Replacement

Battery not lasting long? Swap it out.

Written By: iRobot



INTRODUCTION

Battery not lasting long? Swap it out.



TOOLS:

Phillips #00 Screwdriver (1)
Flathead 3/32" or 2.5 mm Screwdriver (1)
Spudger (1)




PARTS:

iPod mini Battery (1)

Step 1 — Top Bezel



 Before opening your iPod, ensure that the hold switch is in the locked position.

Step 2



- Carefully insert a small flathead screwdriver or [Jimmy](#) in the seam between the metal casing and white plastic top. Use the screwdriver to pry up the white plastic top bezel. Be careful not to damage the soft plastic with your screwdriver.
- ❗ The top bezel is held on with an adhesive, so it may be necessary to pry up in several different locations to free the part.
- To make this job easier, heat up the adhesive with a hairdryer on low heat for a few seconds.

Step 3



- Lift the top bezel off of the iPod.

Step 4 — Bottom Bezel



- Carefully insert a small flathead screwdriver or [Jimmy](#) in the seam between the metal casing and white plastic bottom. Use the screwdriver to pry up the white plastic bottom bezel. Be careful not to damage the soft plastic with your screwdriver.

Step 5



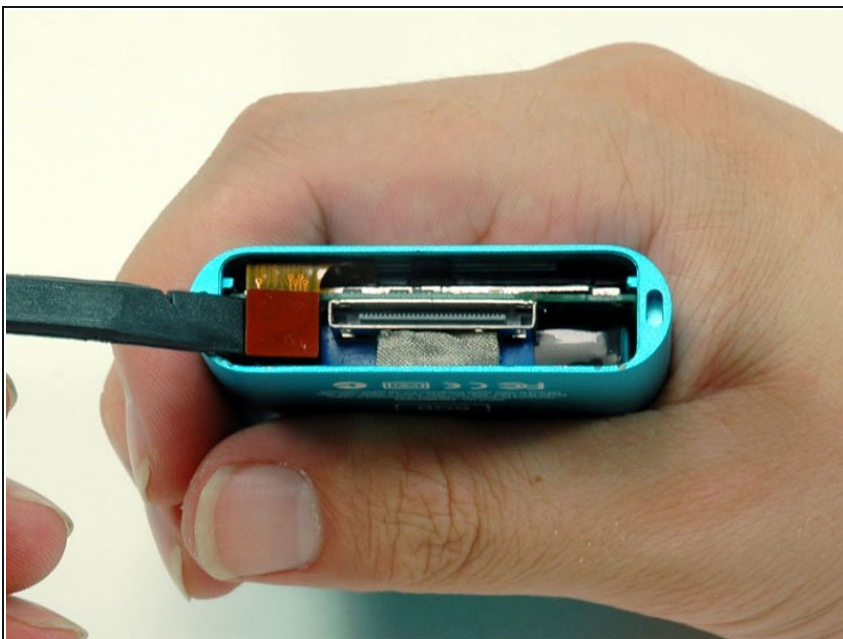
- A small pair of snap ring pliers is the easiest tool to remove the metal retaining bracket.
- You can also use a flathead screwdriver to pry out the metal retaining bracket beneath the bottom bezel as shown. You can free the bracket by first pushing in the metal arms on the corners and then lifting the bracket.

Step 6



- Lift the metal retaining bracket out of the iPod.

Step 7 — Click Wheel



- Use a spudger or the tip of your finger to carefully disconnect the orange click wheel ribbon from the logic board.
- Careful not to dig the spudger in too deep to avoid detaching the contact on the logic board. Try to keep the spudger as close to the orange click wheel ribbon connector as possible.

Step 8



- Remove the two #00 Phillips screws securing the headphone jack to the casing.

Step 9



- Carefully slide the iPod out of its casing by pushing on the logic board near the bottom edge of the click wheel.
- ⓘ As you slide the iPod out, small components may snag on the edge of the casing. Move the iPod side to side to clear these components.
- ⓘ Do not pull on the headphone jack board at the top of the iPod, as the connector to the logic board is fragile.

⚠ Be careful not to break the logic board connector off the iPod. The ribbon cable sits at the very top of the connector.

Step 10



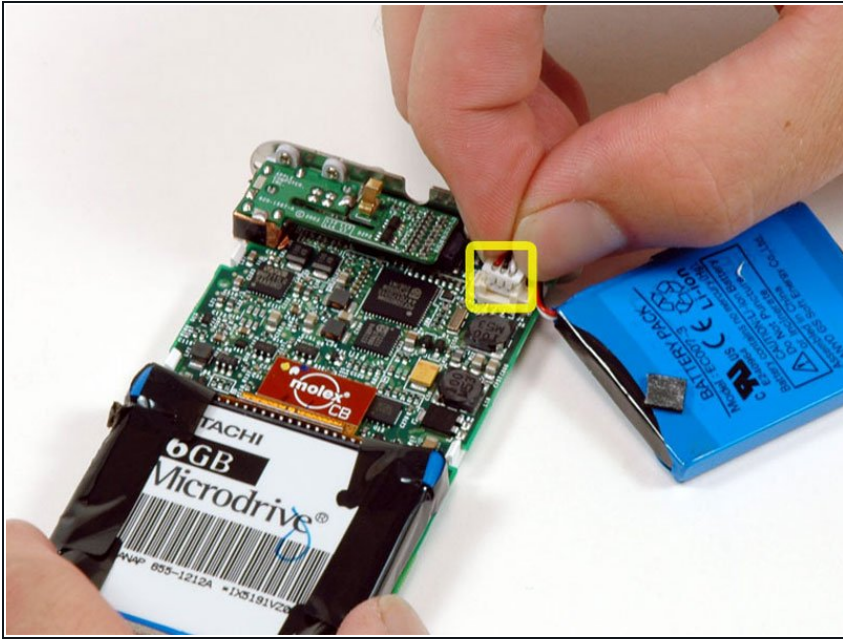
- After pushing the logic board out sufficiently, gently grasp the logic board on either side of the display, and continue to slide the iPod out of its casing.

Step 11



- Lift the battery off of the logic board and lay it to the side of the iPod.

Step 12



- Carefully disconnect the battery from the logic board. Make sure to pull only on the connector and not on the battery wires.

To reassemble your device, follow these instructions in reverse order.