



Nintendo 3DS XL 2015 A,B,X,Y, Start or Select Button Replacement

After following this guide, any of the A, B, X,...

Written By: Kobbe Farwick



INTRODUCTION

After following this guide, any of the A, B, X, Y and Start/Select buttons may be replaced independent of each other. The battery must be removed prior to beginning this guide.

TOOLS:

[JIS Driver Set](#) (1)

[Tweezers](#) (1)

PARTS:


[Nintendo 3DS XL \(2015\) Action Buttons Board](#) (1)

[Nintendo 3DS XL \(2015\) Action Buttons & Rubber Gasket](#) (1)

[Nintendo 3DS XL \(2015\) Start/Select Button and Gasket](#) (1)

Step 1 — Battery



 Ensure your device is powered off before proceeding. Failure to do so may result in electrical shock or damage to the device.

- Place the 3DS upside down. Remove the game card, headphones, charging cable, stylus, or anything else that may be connected to the device.

Step 2



- Using a JIS #0 screwdriver, loosen the two black screws on the back.
- ① The screws are held in place by captive washers and should not be completely removed.

Step 3



- Once the screws are loosened, pry open the back cover.

Step 4



- The battery is located on the left hand side of the 3DS - to remove, use the small gap located at the top-middle and pull up with a non metal pointed tool.

Step 5 — A,B,X,Y, Start or Select Button



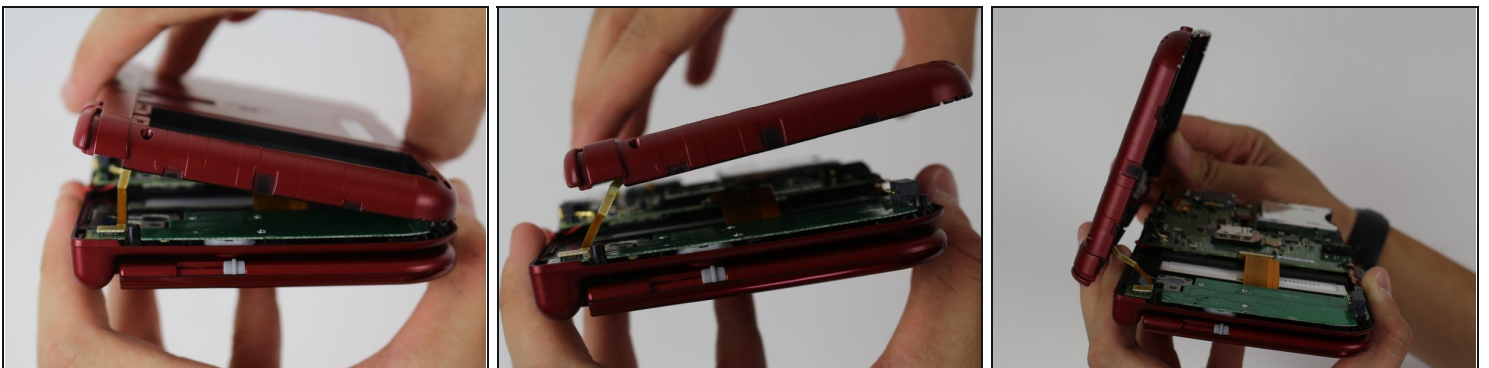
- Remove six 6mm screws on secondary panel using a JIS #000 screwdriver.

Step 6



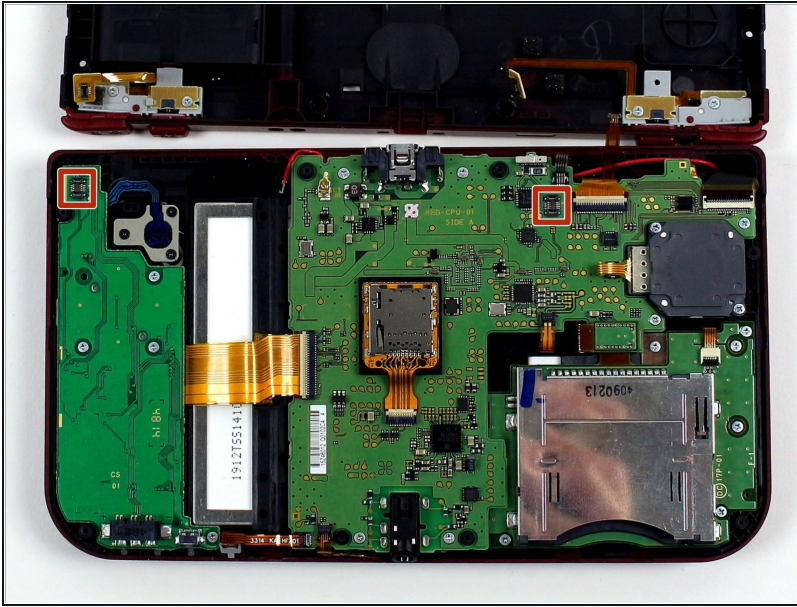
- Remove two upper rubber bumpers located on either side of the charging port.
- Using JIS #00 screwdriver, carefully remove the two 6mm screws that have now been exposed.

Step 7



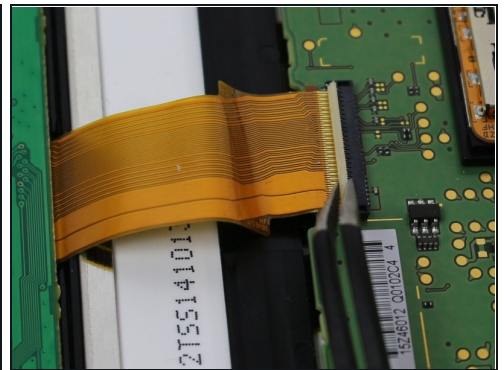
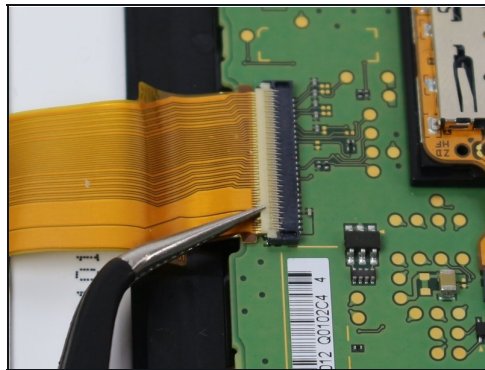
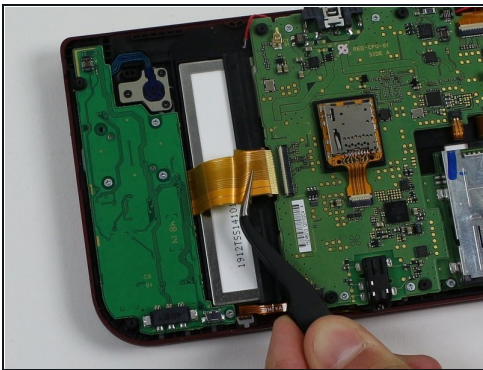
- ① To pry off the cover, carefully lift it up and away from the hinges (in order to clear the headphone port), then pivot it towards the hinges to expose the circuit boards.

Step 8



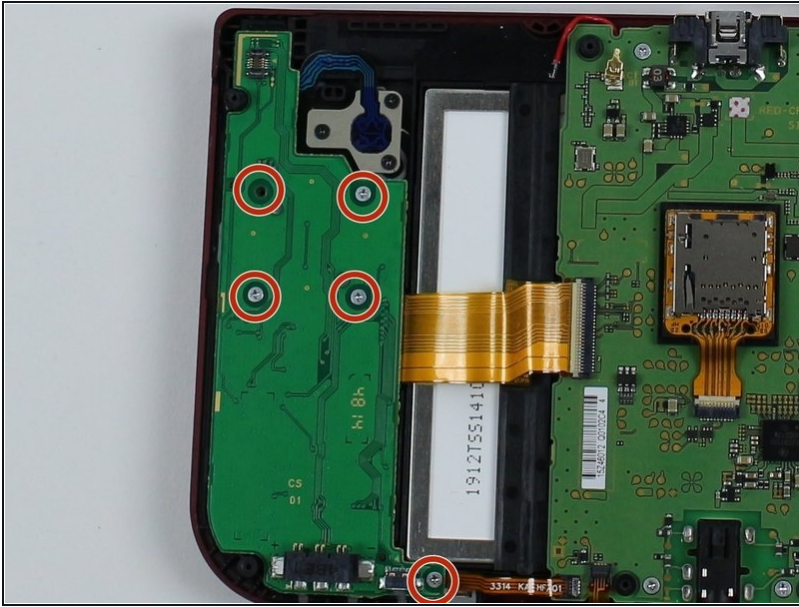
- Use non-conductive [tweezers](#) to disconnect the two ribbon plugs that connect the L/R/ZL/ZR buttons on the cover to the motherboard, then remove it completely.

Step 9



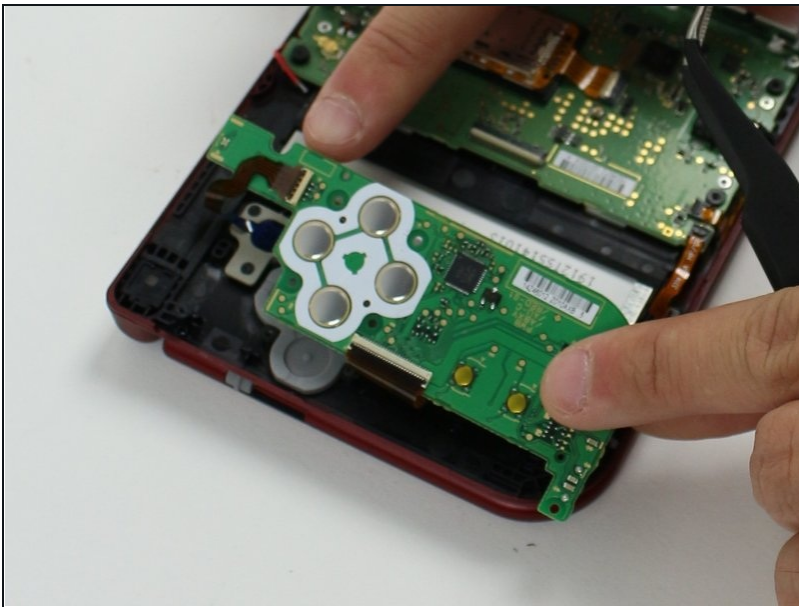
- Locate the ribbon connector between the motherboard and the left circuit board (it should be the widest) and use a pair of tweezers to pivot up the ZIF clasp upward.
- The ribbon can be removed using non-conductive tweezers by pulling out parallel with the board.

Step 10



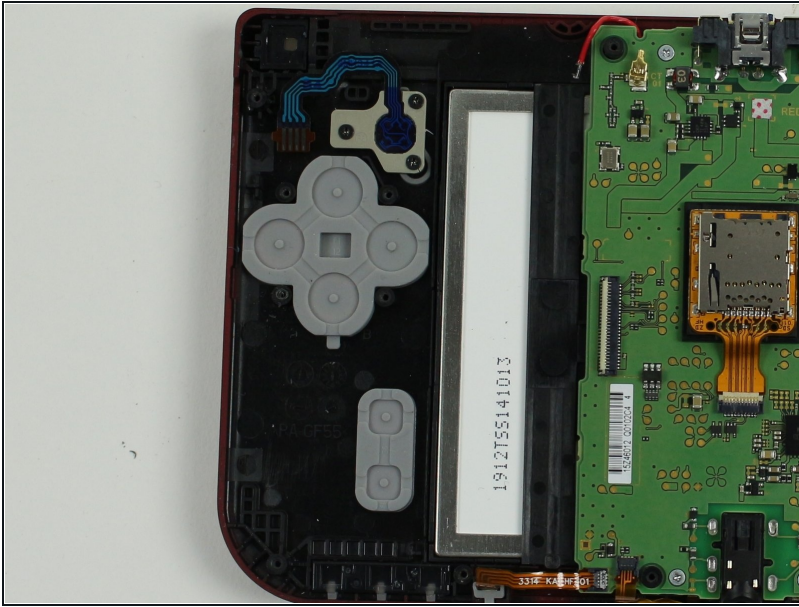
- Next, locate the five 3mm screws on the left board and remove them using a JIS #000 screwdriver.

Step 11



- Carefully flip the board over and use tweezers to remove the blue-black ribbon located underneath.

Step 12



- Remove the gray rubber diamond to reveal the A/B/X/Y buttons and/or the rubber rectangle to reveal the Start/Select button.
- Remove the buttons using tweezers.
- ⓘ When replacing, be sure to check that each button is placed back and is snugly fit into the appropriate hole before reassembling the device.

To reassemble your device, follow these instructions in reverse order.