



# Xelio P900A-BK Front Facing Camera Replacement

How to replace the front-facing camera on your Xelio P900A-BK.

Written By: Marcus Nelson



---

## INTRODUCTION

This guide provides instructions on how to replace the front-facing camera on a Xelio P900A-BK.

---



### TOOLS:

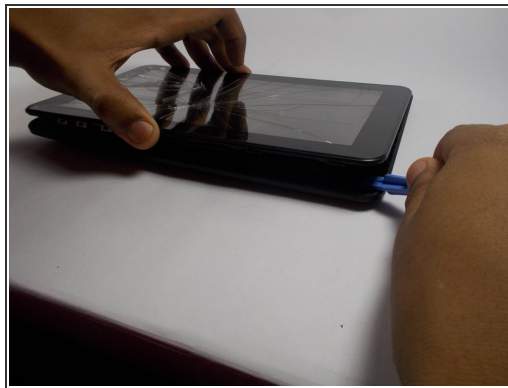
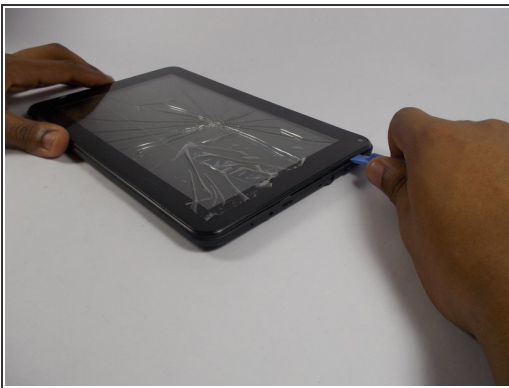
- [5mm Nut Driver](#) (1)
  - [iFixit Opening Tools](#) (1)
-

## Step 1 — Front Facing Camera



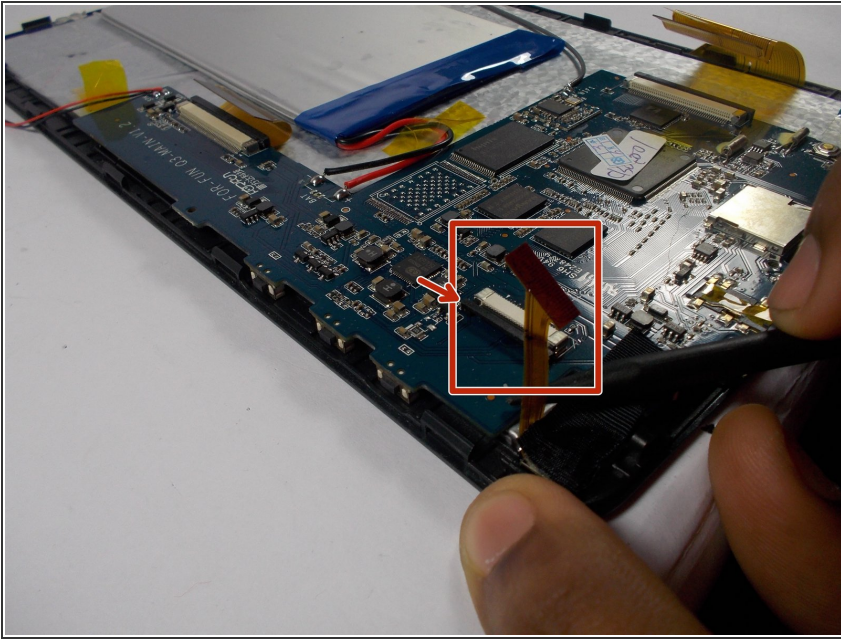
- Remove the two 5.4mm bottom screws.
- Set aside.

## Step 2



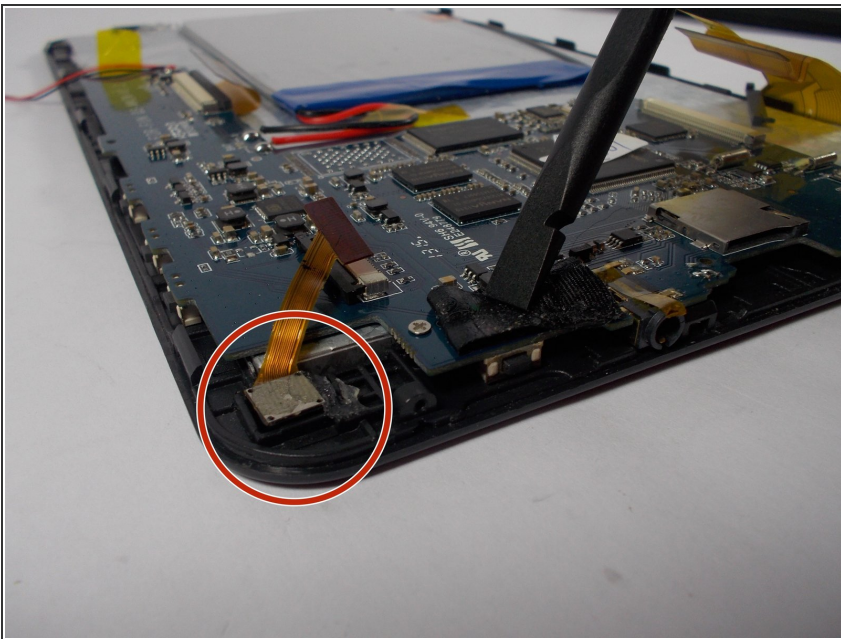
- Insert a plastic opening tool between the screen and the rear case and carefully pry the tablet open.
- Gently work your way around the entire tablet and do not force the case open prematurely.
- ⓘ You will hear the plastic latches pop free.

### Step 3



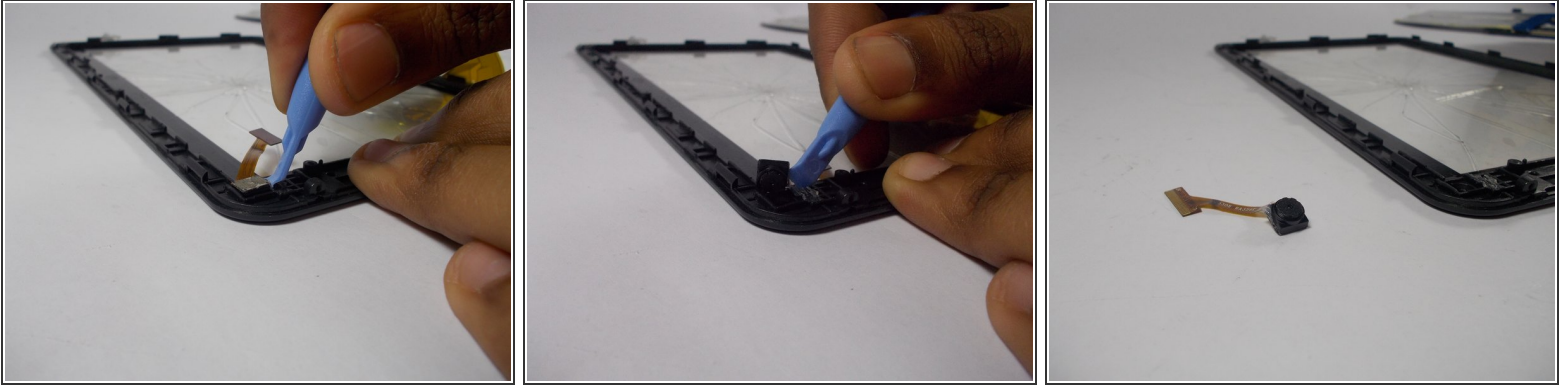
- Remove the connection between the camera and the motherboard.
- Open the black ribbon holder then remove the ribbon from its connection.

### Step 4



- Remove the tape covering the front facing camera entirely to expose one of the motherboard screws.

## Step 5



- Use the smaller plastic opening tool to remove the camera from its socket.

To reassemble your device, follow these instructions in reverse order.