



Trio Stealth Pro 9.7" Motherboard Replacement

If you are having issues with your Trio Stealth...

Written By: Edward Insogna



INTRODUCTION

If you are [having issues with your Trio Stealth Pro 9.7"](#) and find the motherboard needs to be replaced, whether it be malfunctioning or outdated, you can use this guide to achieve this goal.

The motherboard is a vital piece of any computer. It is in charge of many things, including distributing energy from the power supply and facilitates communication between the various hardware components.

Signs of a faulty motherboard can include failing to boot, random shutdowns or freezes, overheating, strange noises, and a burning smell.

Be sure the device is [fully shut off](#) before beginning the repair. For putting a new motherboard in, you may find you need to [solder](#) the cut wires.

TOOLS:

[iFixit Opening Tool](#) (1)

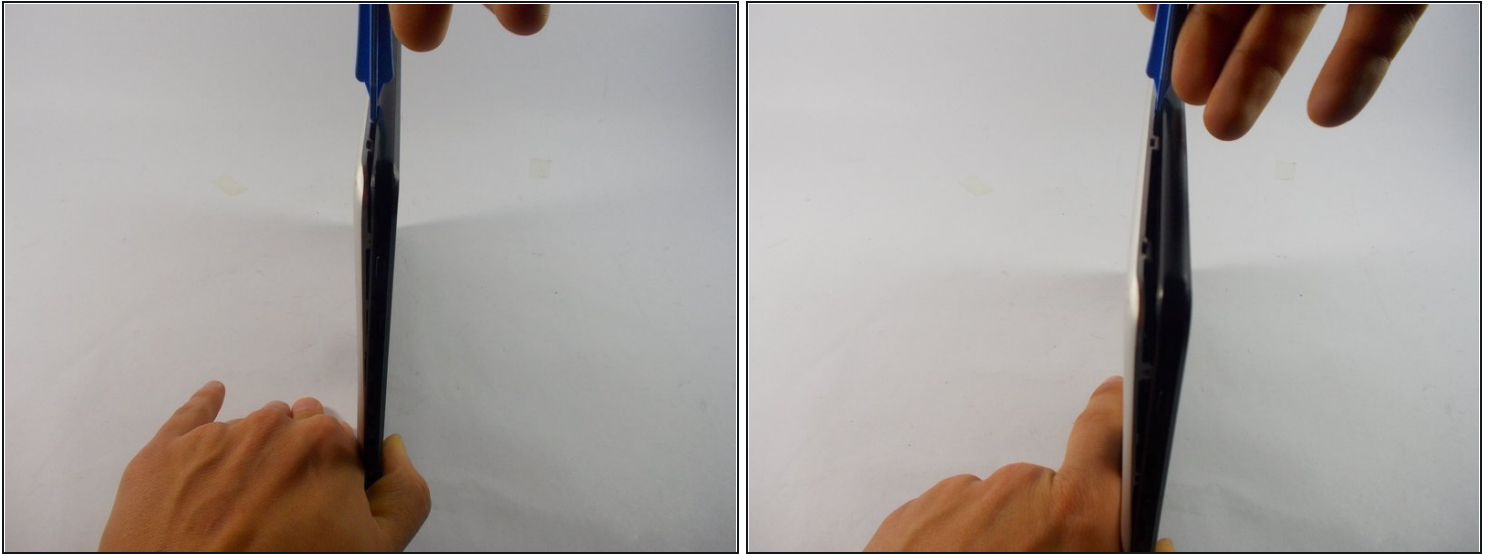
[Spudger](#) (1)

Step 1 — Motherboard



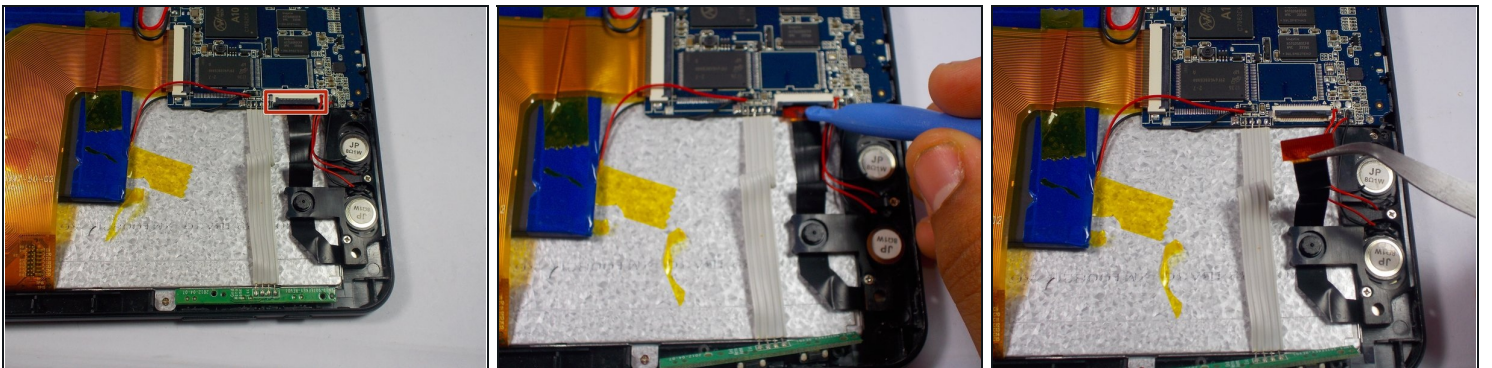
- Remove 2 black 4 cm Phillips screws on either side of the bottom of the device.

Step 2



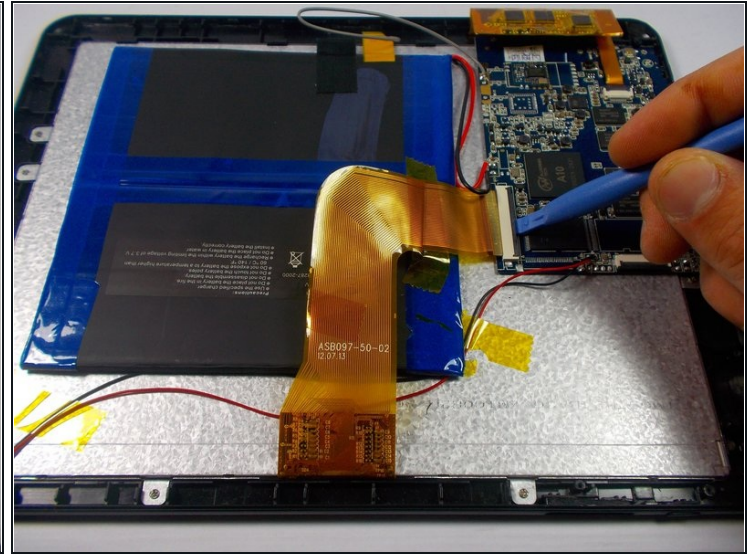
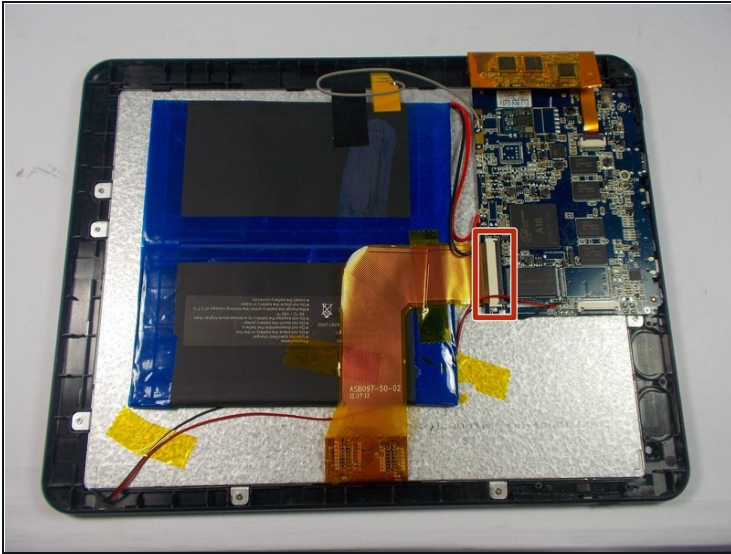
- Use the plastic opening tools and the spudger around the outside of silver metal back plate on the device to pry off the back plate.

Step 3



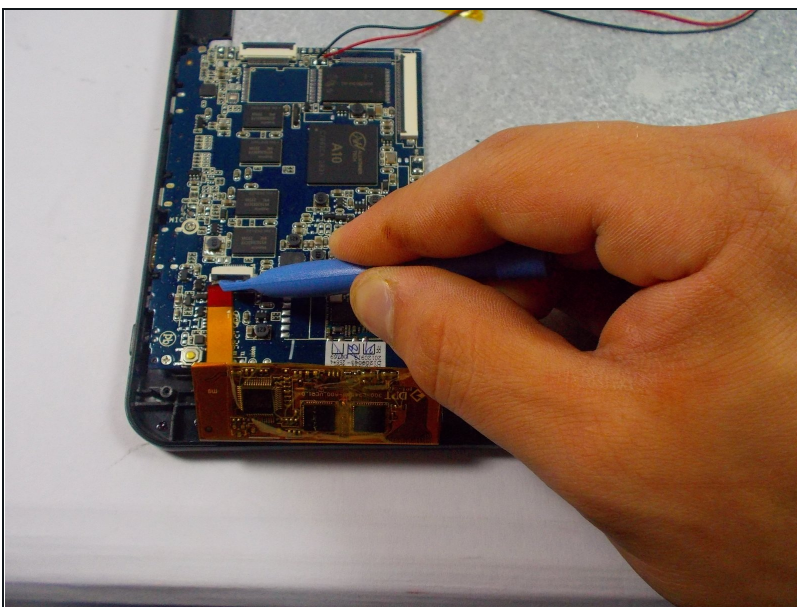
- Unclip camera flex cable
- Use plastic opening tool to lift open black clip where the flex cables are attached to the motherboard.
- Then gently pull out the flex cable with [tweezers](#).

Step 4



- Unclip large orange flex cable.
- Use plastic opening tool to lift open black clip where the flex cables are attached to the motherboard.
- Then gently pull out the flex cable with tweezers.

Step 5



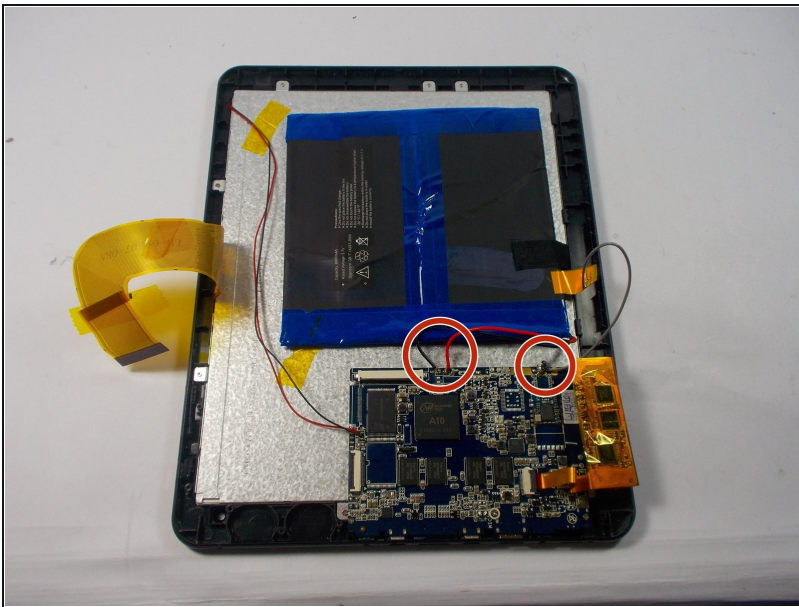
- Remove flex cable clip in top left area of motherboard.
- Use plastic opening tool to lift open black clip where the flex cables are attached to the motherboard. gently pull out the flex cable with tweezers.
- Then gently pull out the flex cable with tweezers.

Step 6



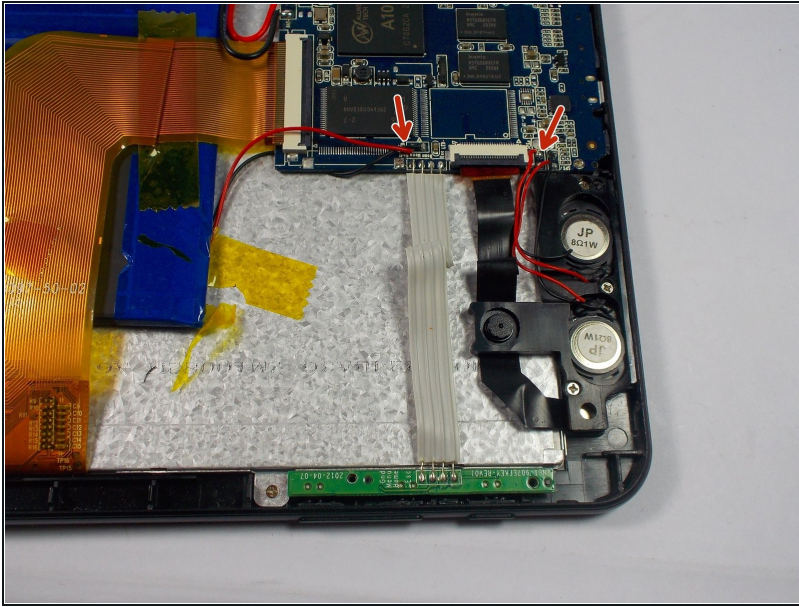
- Remove 4 silver 4 cm Philips screws holding down the motherboard.

Step 7



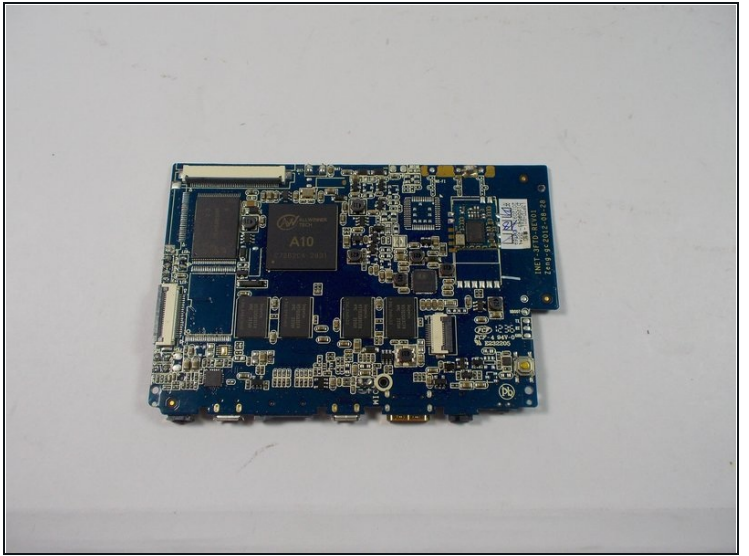
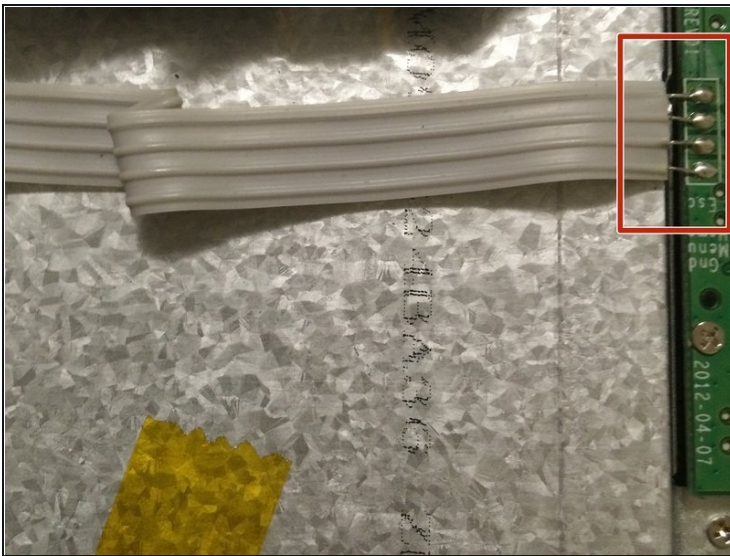
- Cut red black and gray wires attached to the bottom of the motherboard connecting to the battery.

Step 8



- Cut three red and three black wires attached to the right side of the motherboard.

Step 9



- Cut 4 wire cable attached to the right side of the motherboard.
- Remove motherboard.

To reassemble your device, follow these instructions in reverse order.