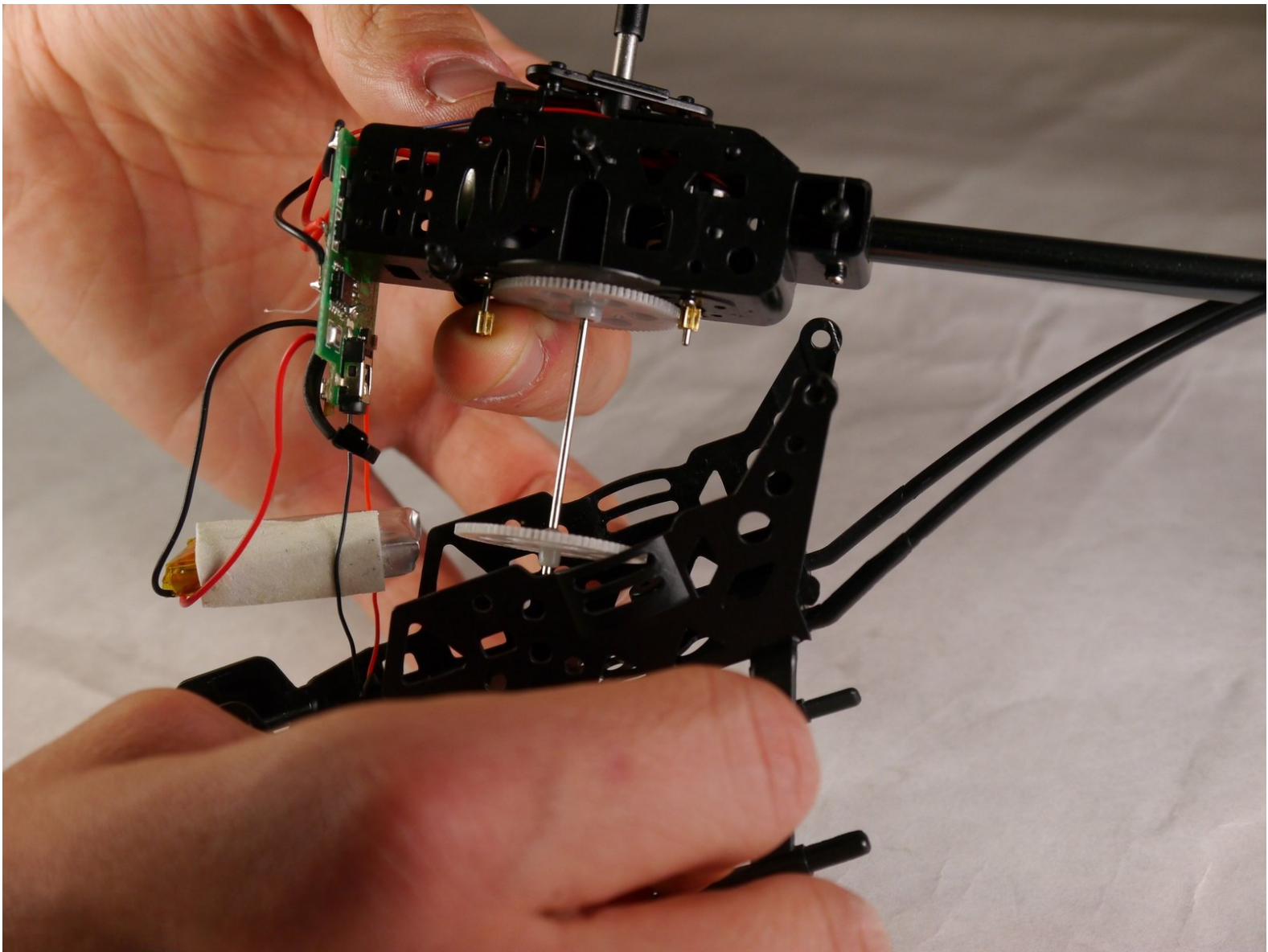




# Propel Gyro-X Drive Gears Replacement

In this guide you will learn how to take apart your Gyro-X helicopter and replace the driving gears for the propeller blades.

Written By: Jack Jenner



## INTRODUCTION

You may need to replace your helicopter's drive gears if they become damaged or stripped. Replacing the gears will require you to completely disassemble your helicopter, so make sure to place small parts and screws in a safe place to avoid losing them.

---

### TOOLS:

- [Phillips #00 Screwdriver](#) (1)
  - [Tweezers](#) (1)
-

## Step 1 — Top Propellor Blades



- ⚠ Stabilizing links are easy to break. Be gentle when prying them off.
- Place the tweezers on the sides of the links and pull straight away from the top point of connection.

## Step 2



- Remove the two 6.0 mm Phillips #00 screws from the rotors.

### Step 3



- Pull the rotors away from the mounting brackets.

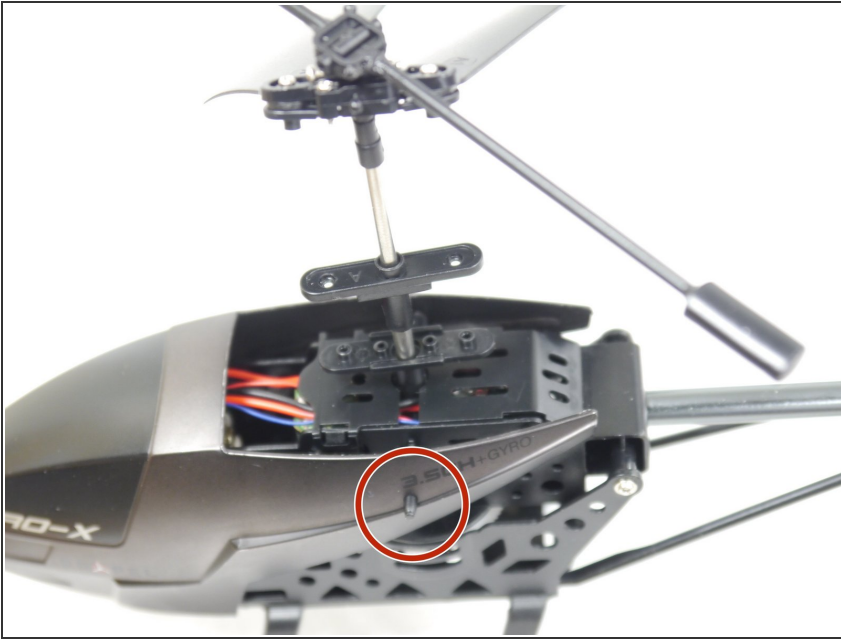
### Step 4 — Bottom Propellor Blades



- Remove the two 5.0 mm Phillips #00 screws from the rotors.
- The blades will fall off when the screws have been removed.



## Step 5 — Outer Shell



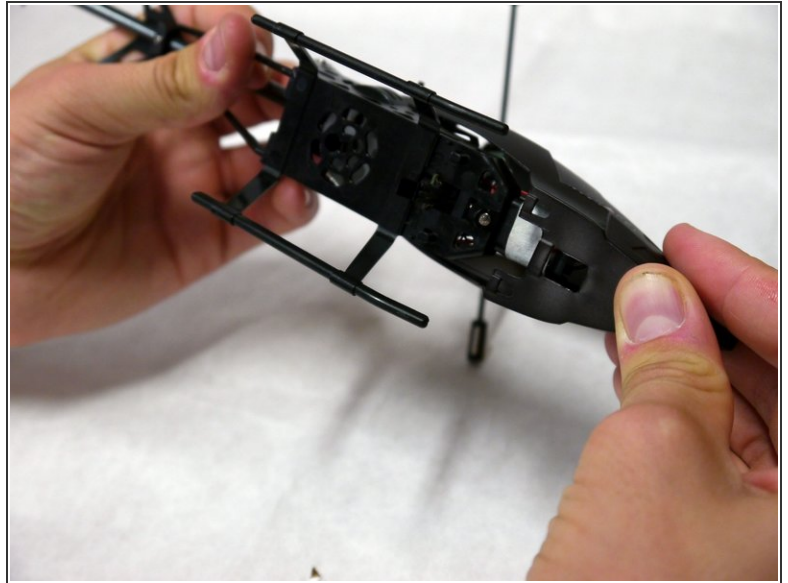
- Locate the nubs on either side of the helicopter.

## Step 6



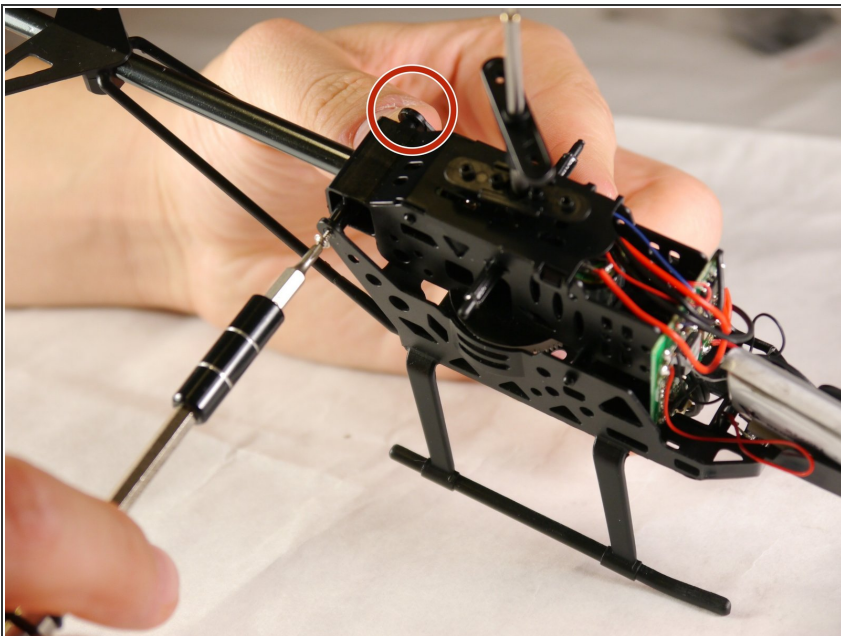
- Pull the body shell off of the nubs on both sides.

## Step 7



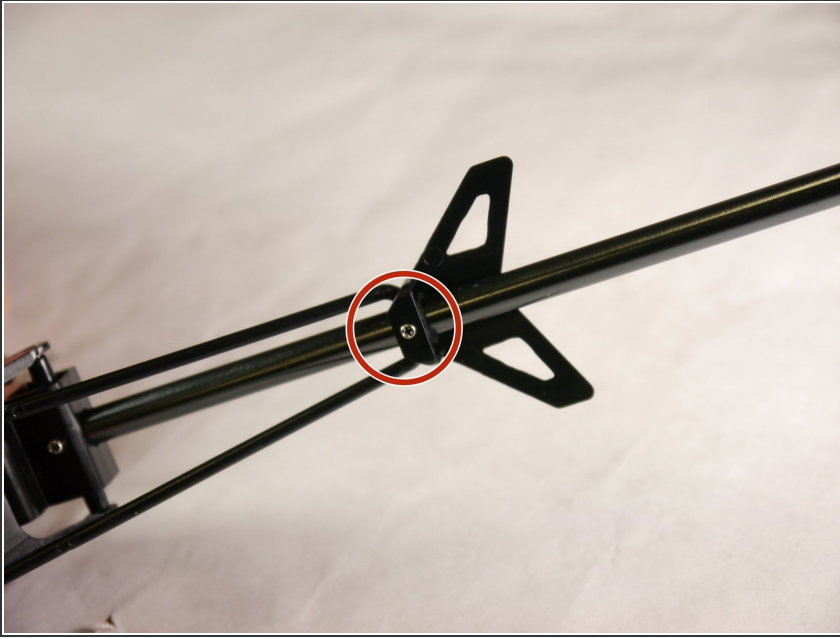
- Push the front of the nose back towards the tail of the helicopter.
- Push down on the shell and pull it away from the body, so that both slots pass over the hooks on the bottom of the helicopter.

## Step 8 — Drive Gears



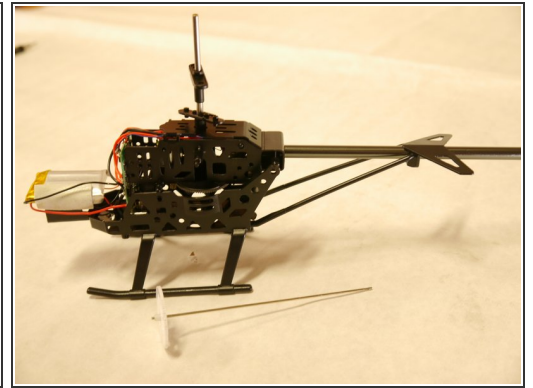
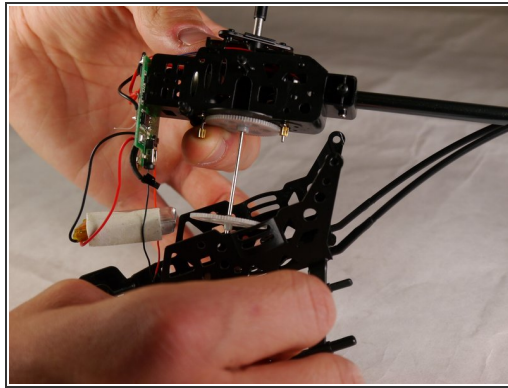
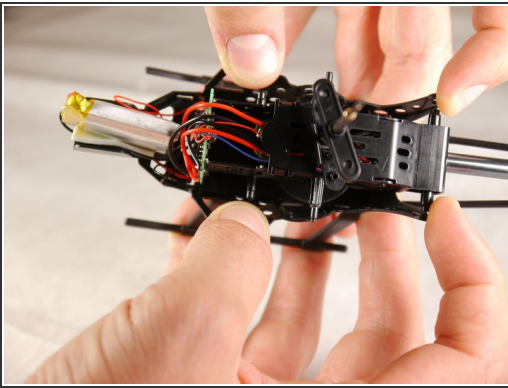
- Remove the two 8 mm Phillips #00 screws between the motor casing and the body.

## Step 9



- Remove the 4 mm Phillips #00 screw from the tail.

## Step 10



- Use your fingers to free the motor casing from the body, by bending the plastic body casing outwards at each of the four nubs.
- Pull the motor casing upwards from the body.
- The drive gear will slide out when you lift the motor casing.

To reassemble your device, follow these instructions in reverse order.