



# Canon Vixia HF20 Attachment Port for Optional Accessory Replacement

If the barrier for the optional accessory comes loose or comes off, we will show you how to fix the area and tighten the device until it is secure.

Written By: Taylor Morris





## TOOLS:

- [Phillips #00 Screwdriver](#) (1)
  - [Large Needle Nose Pliers](#) (1)
-

## Step 1 — Attachment Port for Optional Accessory



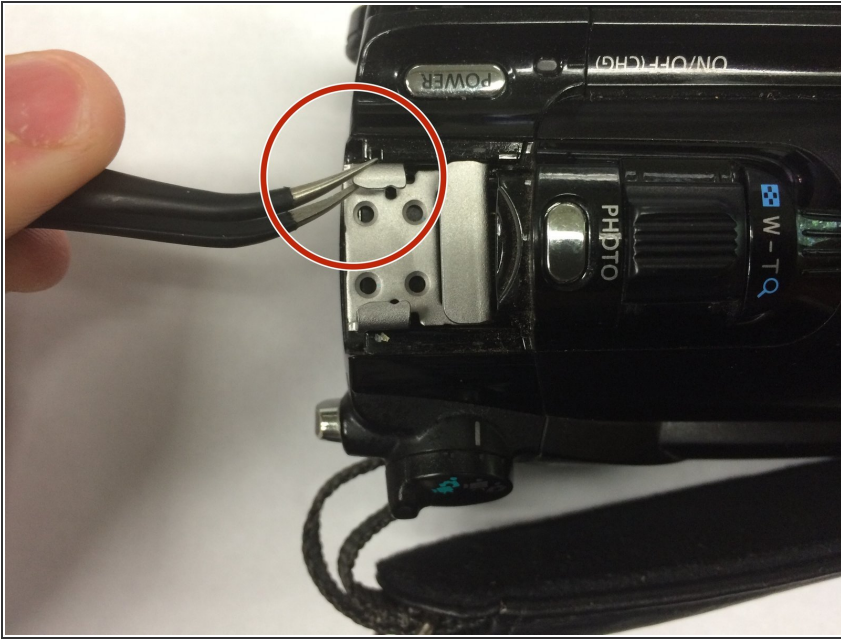
- Remove the mini advanced shoe from the top of the camcorder.

## Step 2



- Unscrew the four 6 millimeter screws with the Phillips screwdriver.

### Step 3



- Carefully remove the silver plate with needle nose pliers.
- Clean the silver plate with isopropyl alcohol and a cotton swab to remove any debris.

### Step 4



- Reinsert the silver plate and the four 6 mm screws and screw them securely into their holes.

To reassemble your device, follow these instructions in reverse order.