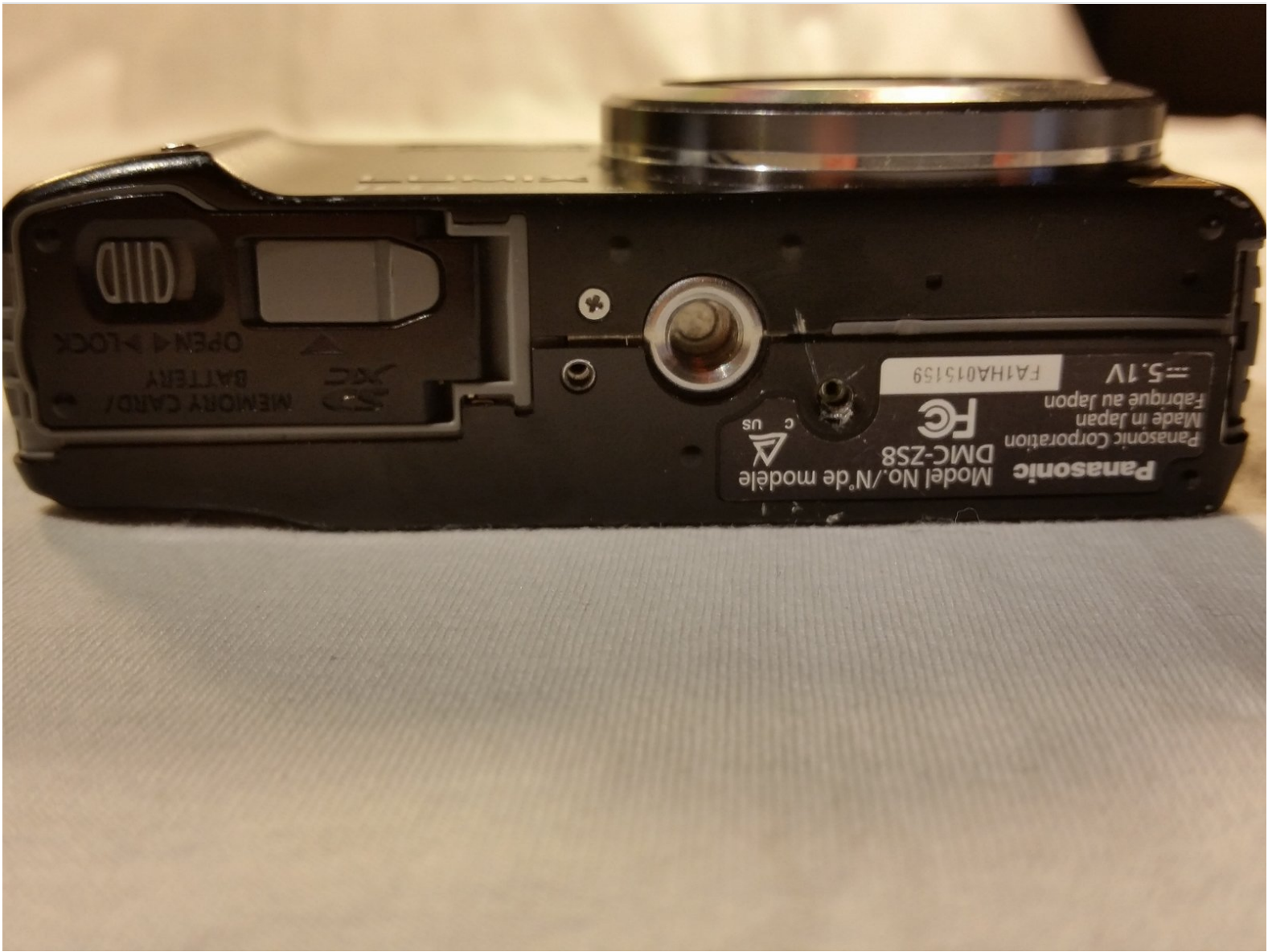




Panasonic Lumix DMC-ZS8 Battery Compartment Cover Replacement

This quick guide will take you through the steps of replacing the spring loaded cover for the battery compartment. This cover will protect your battery and keep in place. If it were to be compromised your battery can be lost and take water damage.

Written By: David Garza



INTRODUCTION

In this guide, I'll show you how to replace the battery compartment cover for the Panasonic Lumix DMC-ZS8 camera. In order to do this, you will need a small Phillips head screwdriver that fits into the screws in the bottom of the camera. You will also need a needle or small pin, along with small needle-nose pliers or a similar tool to help. Once you have that, along with your replacement cover, it's a pretty easy and straightforward process!



TOOLS:

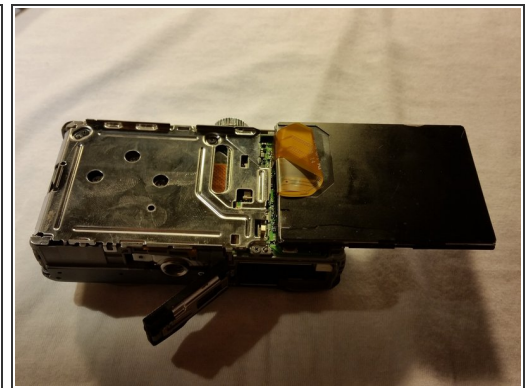
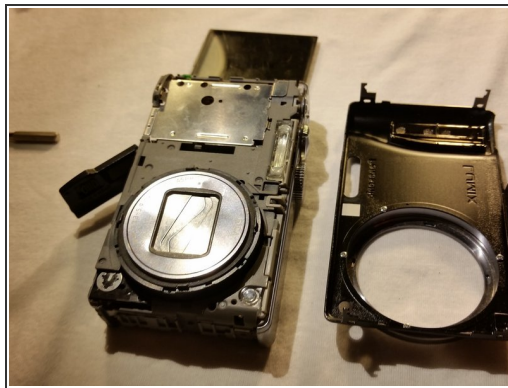
- [Phillips #000 Screwdriver](#) (1)
 - [Needle or Pin](#) (1)
 - [Flush Cutter](#) (1)
-

Step 1 — Battery Compartment Cover



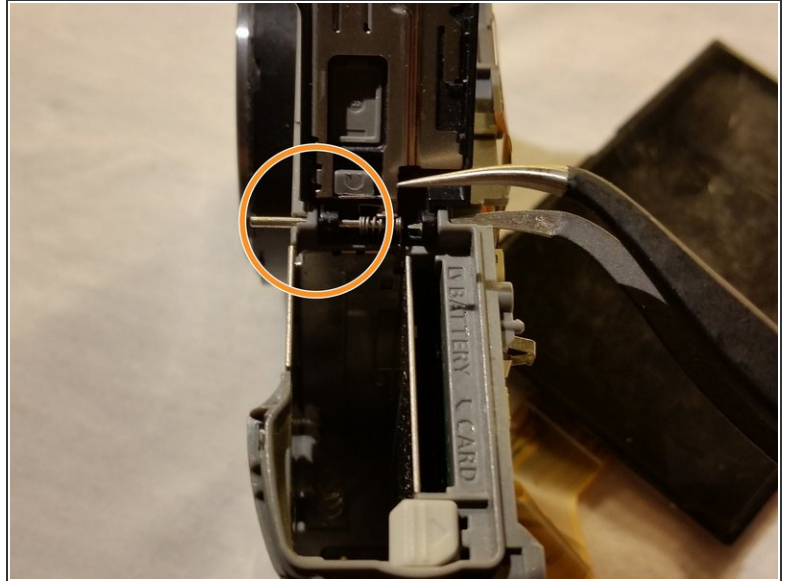
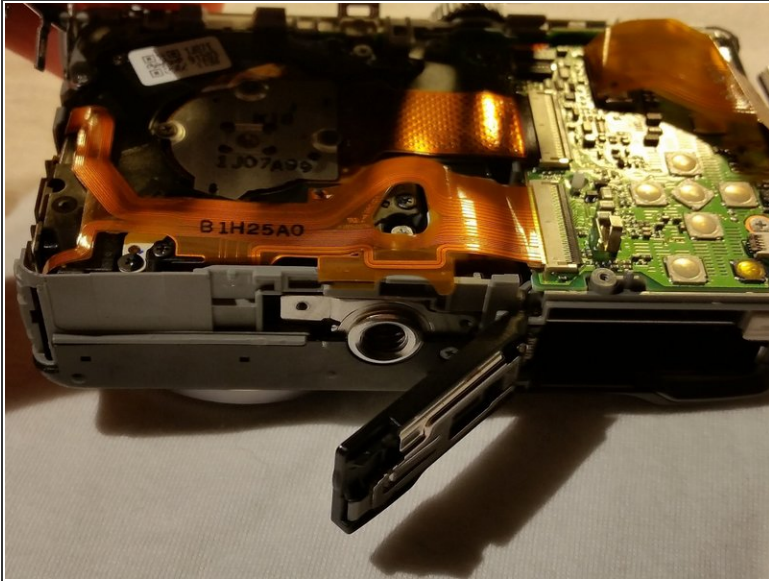
- Remove the bottom Phillips head screws on the camera to take off the outer plastic housing. Be careful when pulling the piece off; if something seems stuck, double check to make sure every screw on the bottom was removed.

Step 2



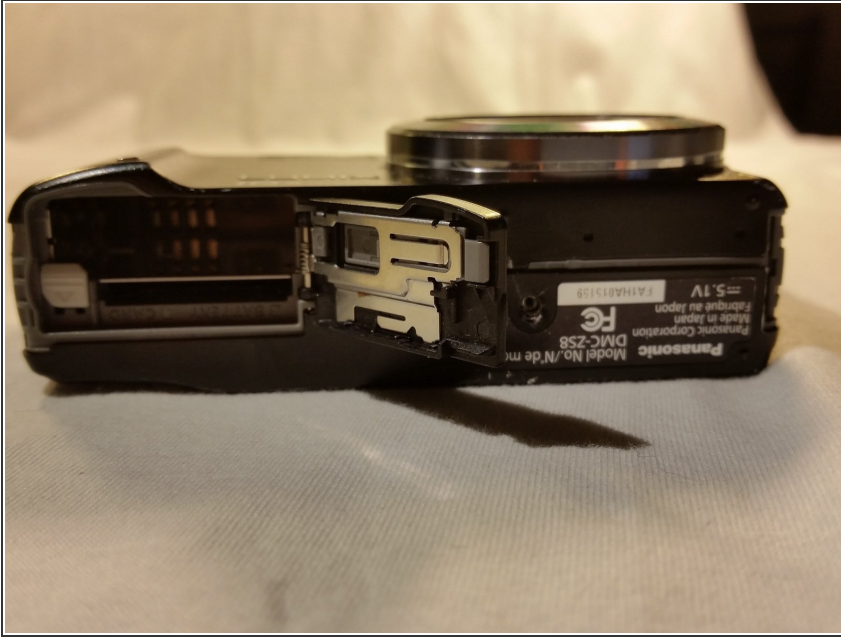
- Once the screws have been removed, slowly and carefully take the top half of the housing off the camera.
- Flip the camera over, and carefully lift the screen while still making sure it's fully attached to the camera.

Step 3



- With the screen flipped over, you now have access to the metal plate under it. Using the same Phillips screwdriver, remove the metal plate. Doing this will give you access to the push pin holding the cover in place.
- Use a small needle, pin, or needle nose pliers to slide the pin right out. Be sure to keep the pin and spring in a safe spot to prevent loss.

Step 4



- Once you have replaced the the pin and spring with the new cover, be sure to check that the spring action still functions. Also check that the battery sits properly in the compartment and the cover locks and fits properly.
- If this works, then you're done! When reassembling the camera, be sure to make sure that all of the screws go tightly back in place in the same order that they were taken out.

To reassemble your device, follow these instructions in reverse order. Be sure to check that the spring action still functions and that the battery fits while still closing and locking properly.