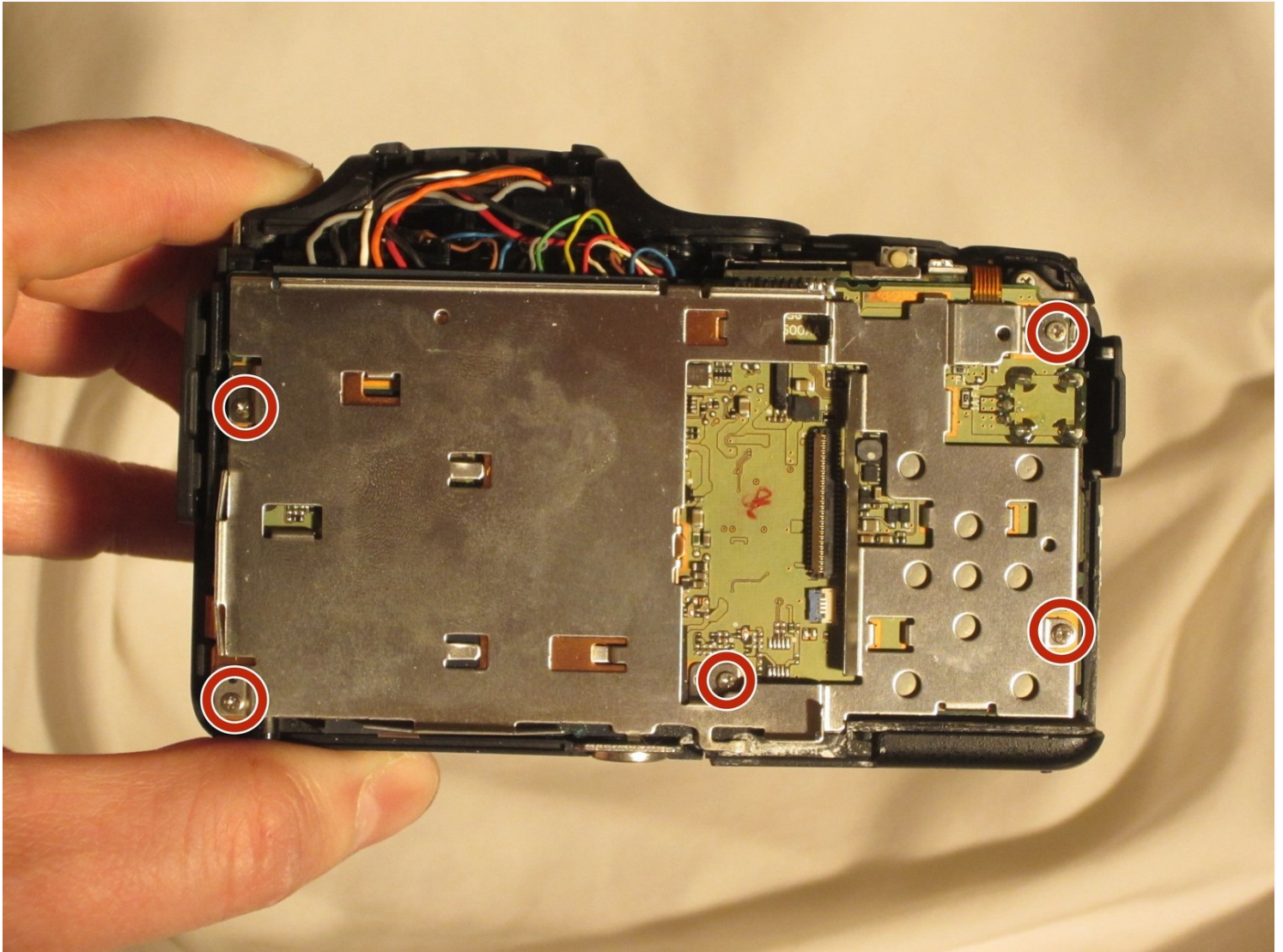




# Nikon Coolpix L820 Shutter Button Replacement

The shutter is a very important part of the...

Written By: Jimmy Kendall



# INTRODUCTION

The shutter is a very important part of the camera because without it you can't take pictures. This guide will give you the steps to access this button and replace this button.

---

## TOOLS:

Metal Spudger (1)

Tweezers (1)

Phillips #0 Screwdriver (1)

---

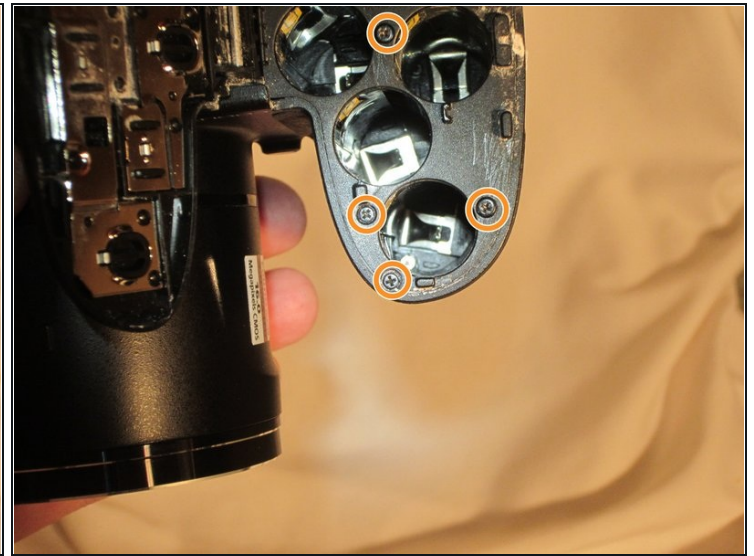
## Step 1 — Settings Buttons



 Remove the battery before beginning.

- Use a Phillips #0 screwdriver to remove the screws on the front casing. There are ten screws, three on the left side, two on the bottom, and one on the right side of the camera.

## Step 2



- Remove the front top Phillips screw with the screwdriver.
- Open the empty battery slot on the bottom of the camera, revealing four additional screws.
- Unscrew the four Phillips screws with the screwdriver.



### Step 3

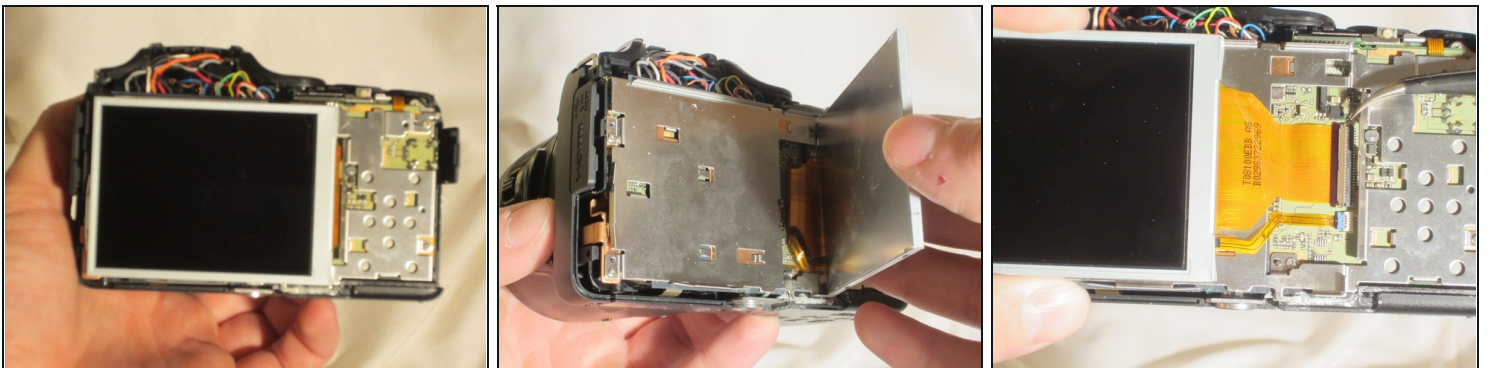


- Using the spudger, move around the casing, carefully separating the rear housing from the camera assembly.

⚠ Be sure to only apply pressure to the casing panels and not the sensitive internal electronics.

- Once the rear housing is separated, the settings buttons will be accessible for replacement.

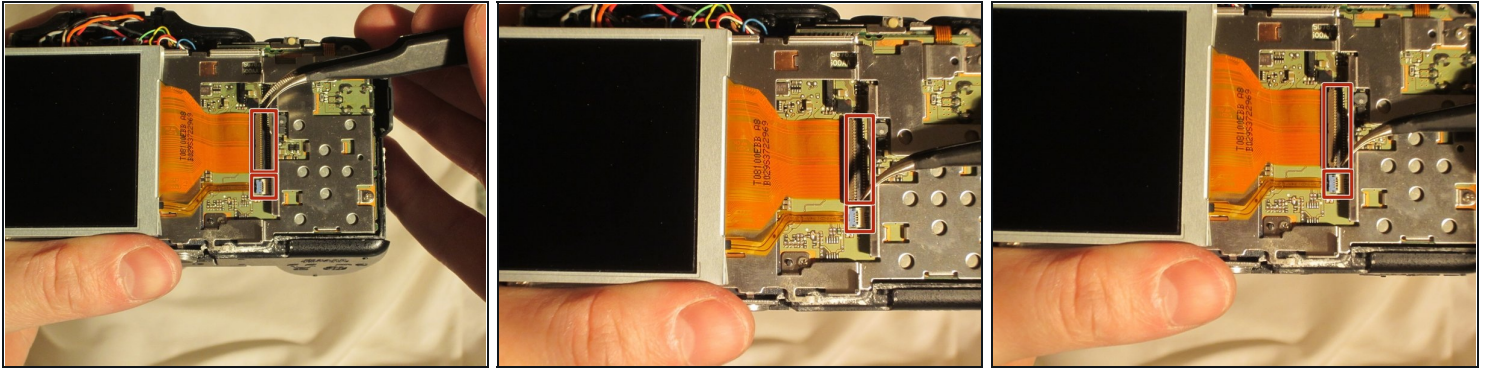
### Step 4 — LCD screen



- Remove the front casing to expose the LCD screen and wires.

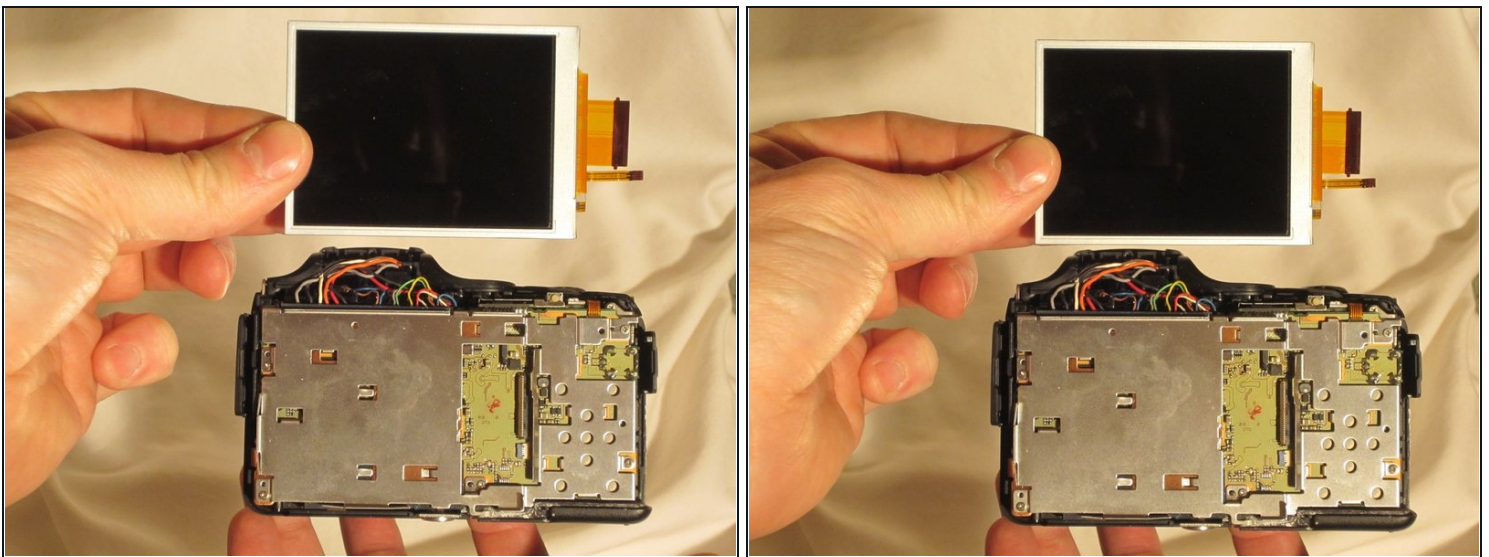
⚠ Do not damage the exposed wires.

## Step 5



- Using the [tweezers](#), lift the hinges connecting the two ribbon wires to the camera.

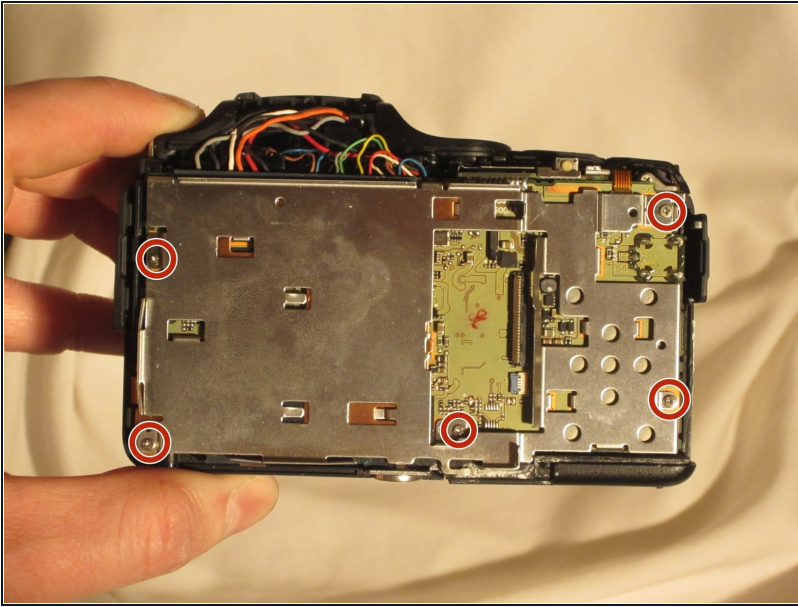
## Step 6



- Once the flexible ribbon wires are disconnected, remove the LCD screen.

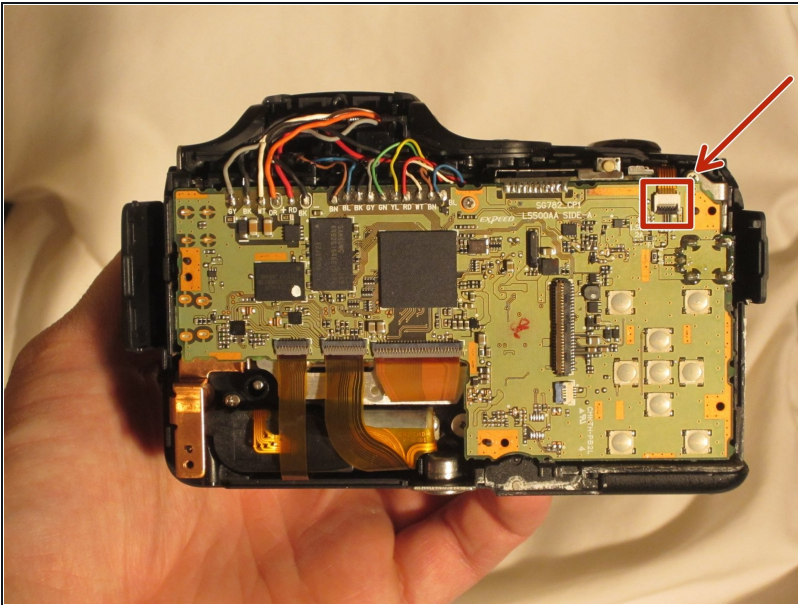


## Step 7 — Shutter Button



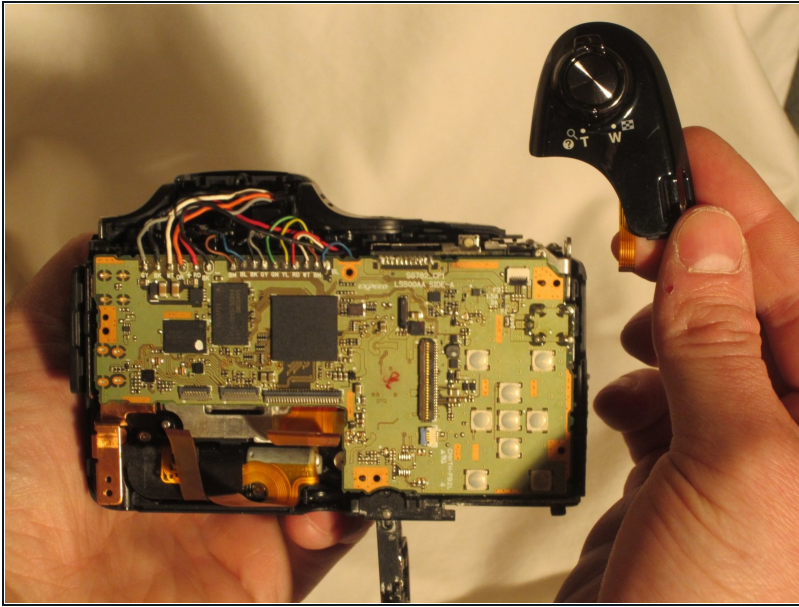
- Remove these five Phillips screws, from the back of the camera, with the Phillips screwdriver.

## Step 8



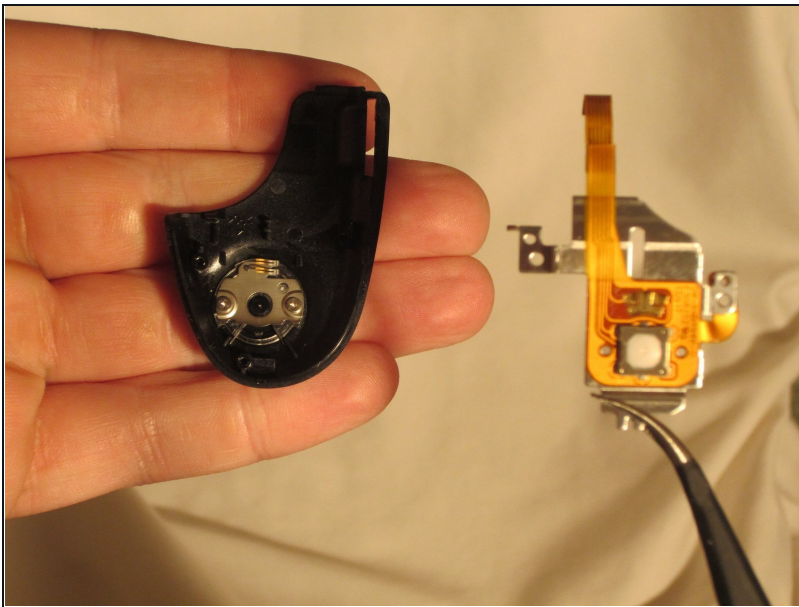
- Using the pointed edge of the spudger, lift the hinge that secures this flex circuit. This will unfasten the flexible ribbon wire.

## Step 9



- Remove the panel containing the shutter and zoom slider, by lifting it up.

## Step 10



- Remove the metal cover using [tweezers](#) to allow access to the shutter button.
- Replace shutter button.

---

To reassemble your device, follow these instructions in reverse order.