



Samsung Galaxy Media Player 5 Rear and Front Facing Cameras Replacement

Written By: China Ayala





TOOLS:

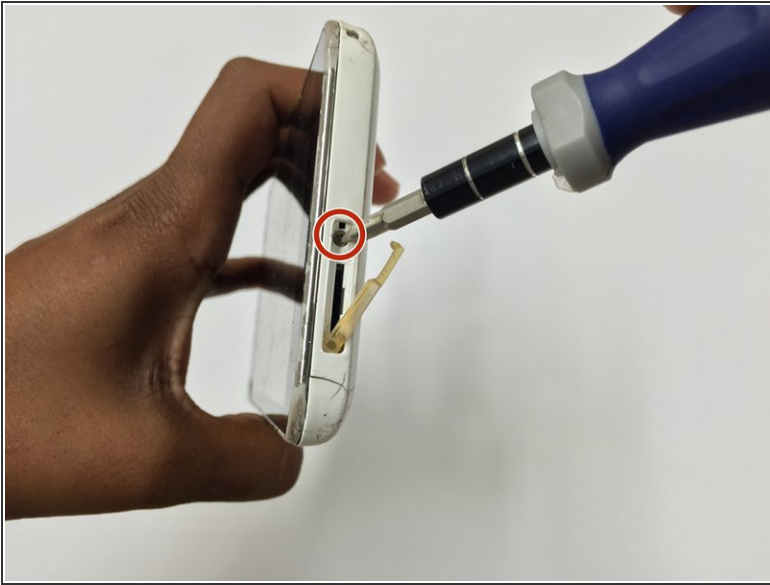
- [Phillips #0 Screwdriver](#) (1)
- [Tweezers](#) (1)
- [iFixit Opening Tools](#) (1)
- [iFixit Opening Picks set of 6](#) (1)



PARTS:

- [Galaxy Player 5" Front and Rear Facing Cameras](#) (1)
- [Galaxy Player 5.0 Volume Button Board](#) (1)

Step 1 — Rear and Front Facing Cameras



- Remove SD Memory Card before taking the device apart. Using the screwdriver, remove the 10mm Phillips screw that is near the SD Memory Card port.

Step 2



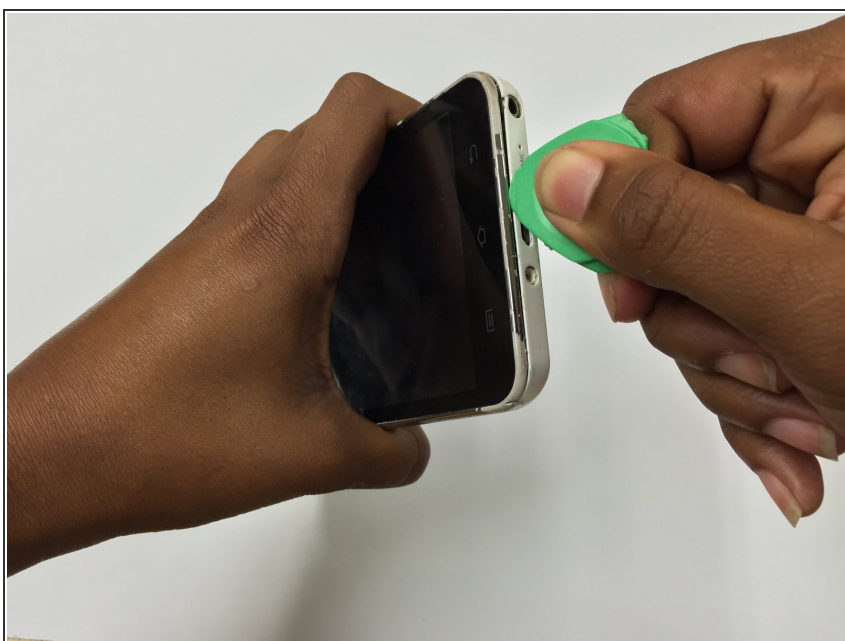
- Remove the white caps which are covering the screws that are located on either side of the charging port.
- ⓘ You may have to use a low heat blow dryer for 5 to 10 seconds, or other equivalent heat source to loosen the adhesive.

Step 3



- Continue to unscrew the two 10mm Phillips Screws from the bottom of the device.

Step 4



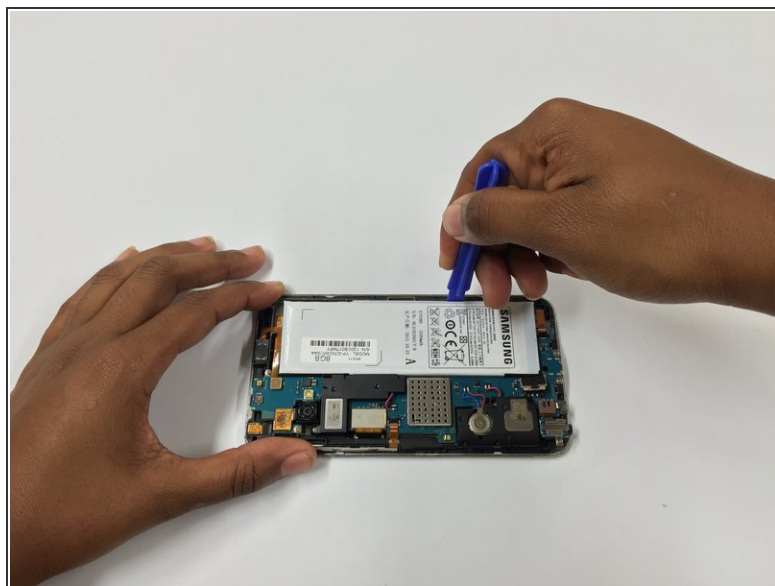
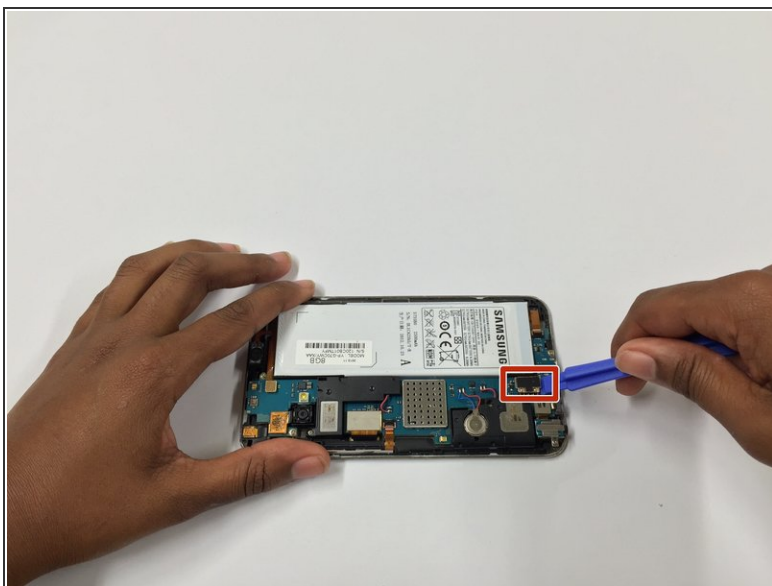
- Starting from the bottom and working around, use an opening pick to separate the front cover housing from the back cover housing.
- ⓘ You will hear a popping sound, indicating the separation.

Step 5



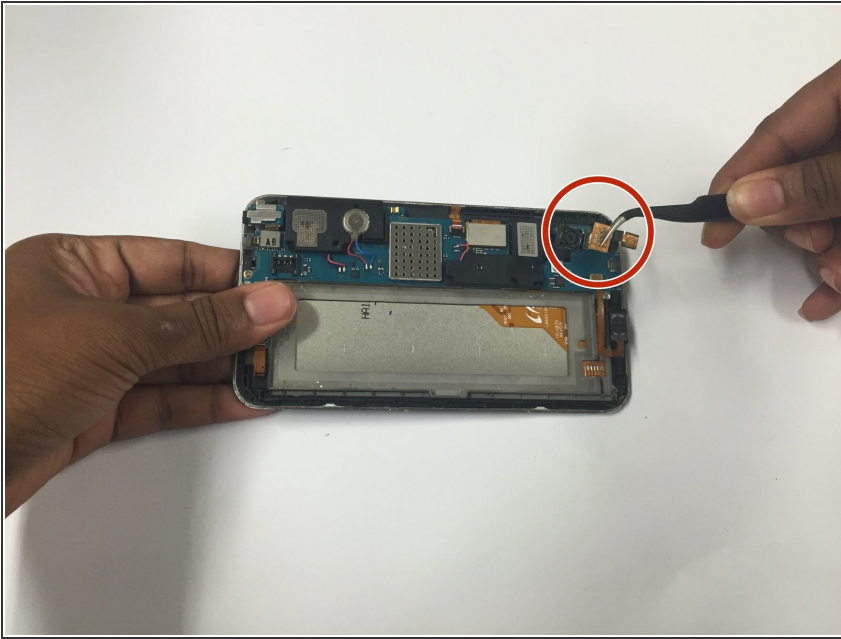
- Take the back housing cover off of the device.

Step 6



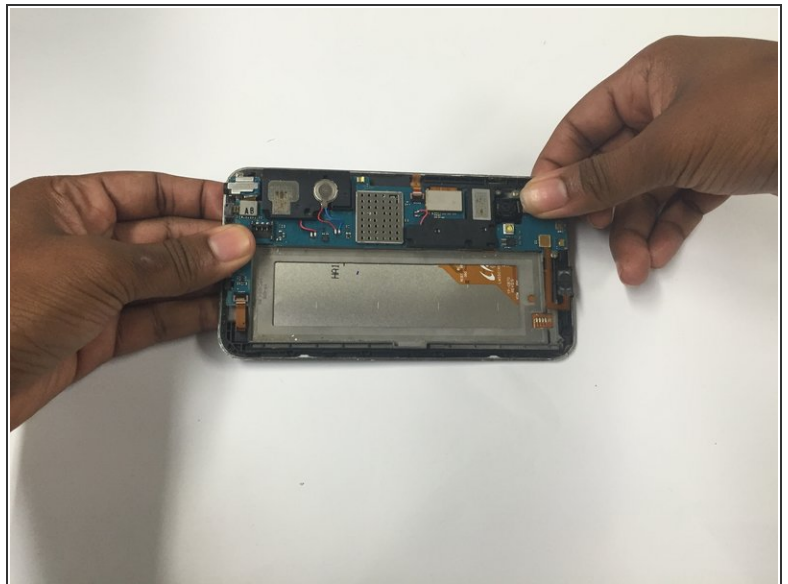
- Detach the tab the battery is attached to and the battery using the same prying tool in an upward motion.
- ❗ Adhesive is behind the battery, but it is not strong.

Step 7



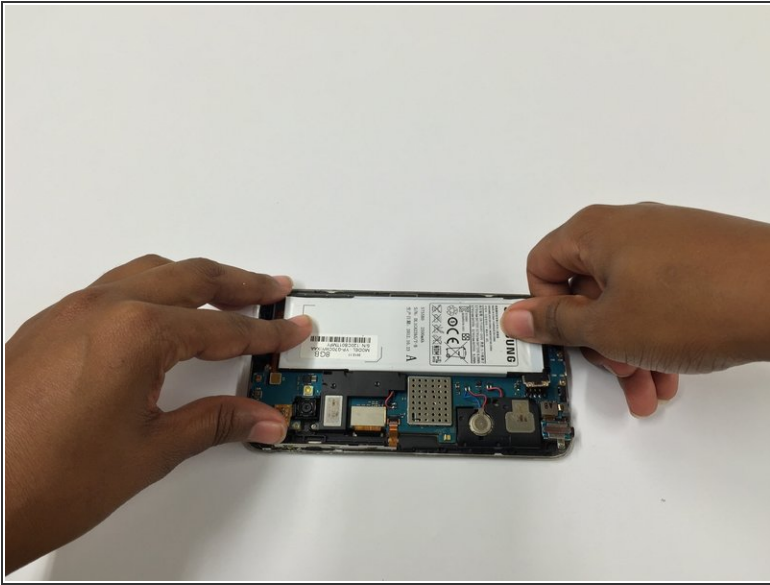
- Remove the rear and front facing cameras by lifting the tab that they are attached to with the tweezers, they should come up quickly, and together.
- ⓘ Both of the Cameras are attached to one flex cable, so when you remove the tab both of them should come out.

Step 8



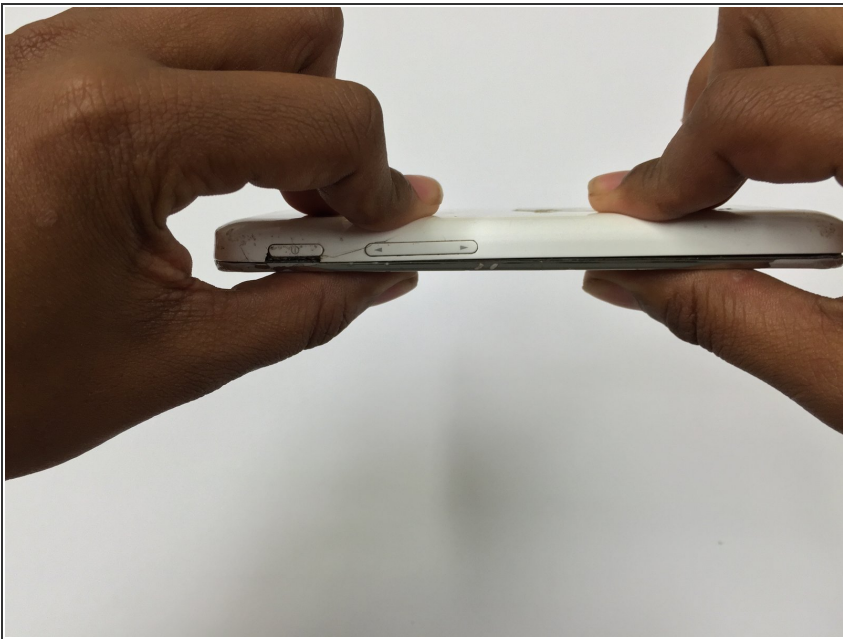
- Gently put in the new rear facing and front facing camera and snap the tab back onto the motherboard.

Step 9



- Insert the battery into its position, and reconnect its tab onto the motherboard.

Step 10



- Now put the rear housing cover on the device, starting from its bottom side, and snap the edges all the way around to close the device.

Step 11



- Lastly reinsert the screws at the bottom of the device, as well as the screw inside the SD Memory Card port.

To reassemble your device, follow these instructions in reverse order.