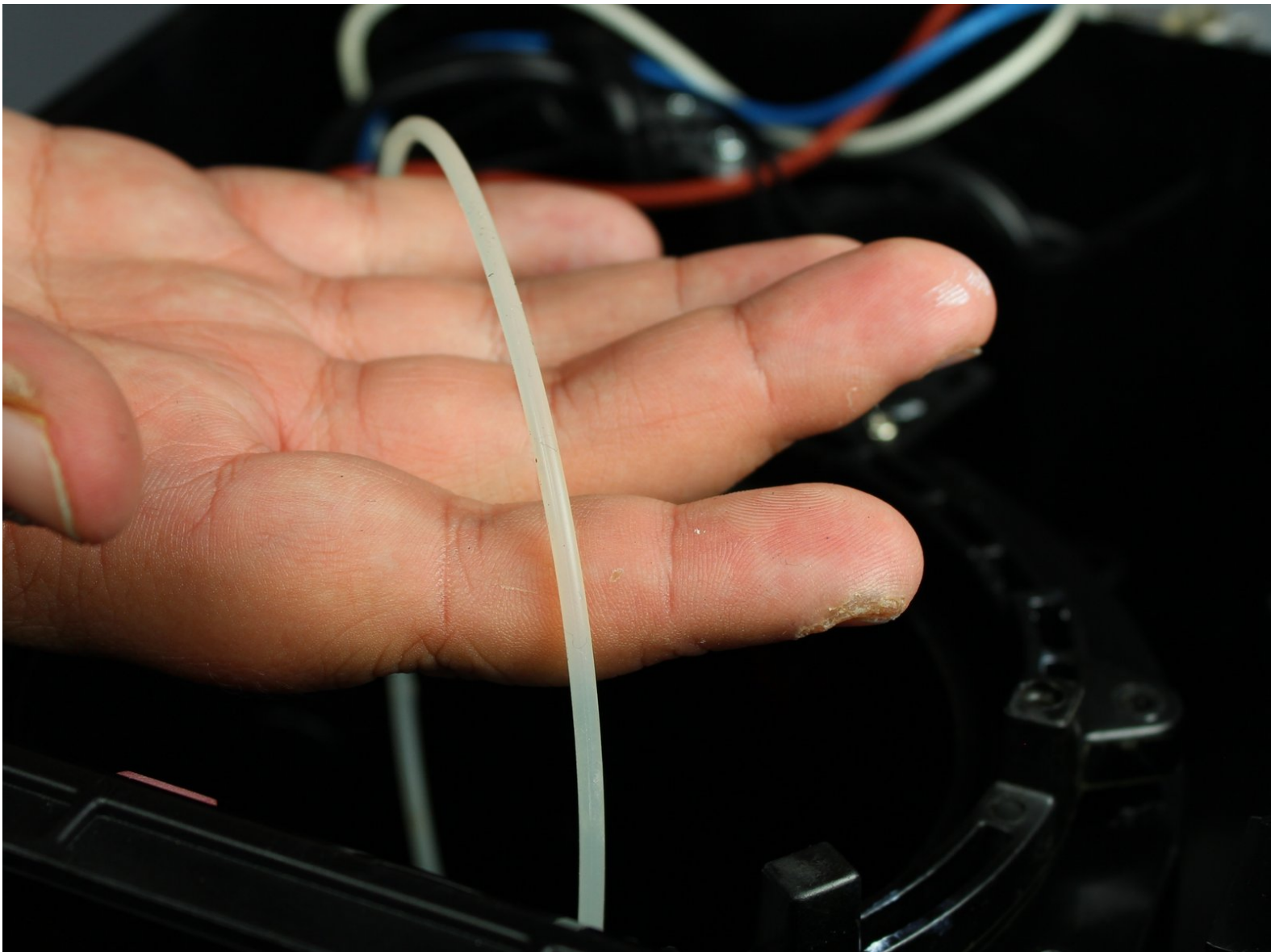




# Mr. Coffee BVMC-SJX33GT O-Rings Replacement

This guide demonstrates how to remove and replace the two O rings in the Mr. Coffee BVMC-SJX33GT.

Written By: Mackenzie Aiken



---

## INTRODUCTION

There are two O-rings in the Mr. Coffee BVMC-SJX33GT; If your coffee maker is leaking, the O-rings may potentially be damaged in some way and in need of replacement.

Make sure your coffee maker is unplugged and empty of all water before attempting to make any repairs.

---

### TOOLS:

- [Phillips #2 Screwdriver](#) (1)
  - [Small Needle Nose Pliers](#) (1)
  - [iFixit Opening Tools](#) (1)
-

## Step 1 — Base



- Turn your coffee maker over so that the base is facing up.

## Step 2



- Locate the seven 13.5mm screws securing the base to the coffee maker.
- Unscrew the screws using a #2 Phillips head screwdriver.
- ⓘ Use a screwdriver with a magnetic tip to more easily remove the three screws in the back and two in the middle.

### Step 3 — security screws



- Also the front two screws are safety screws: they have a 6 sided star shape with a raised dimple in the center to prevent homebodies from casually opening the machine. (probably from the Sunbeam's (owns Mr. Coffee) legal dept.) Anyway you will need a security bit to remove the screws and not a phillips screw driver.

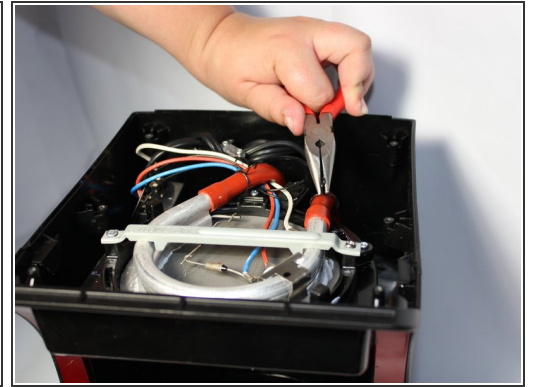
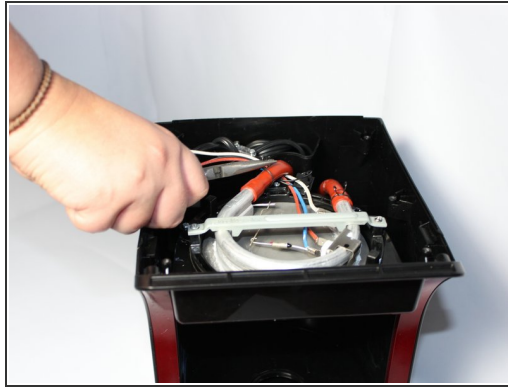
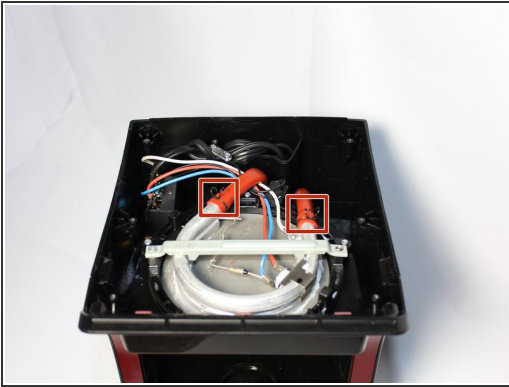
### Step 4



- Lift base to remove.
  - ⓘ If the base sticks along one edge, do not pull at an angle. Gently tug straight up while sliding a finger along the edge in order to pop the clips.

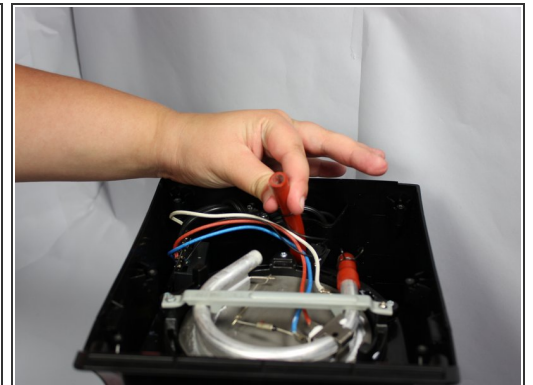
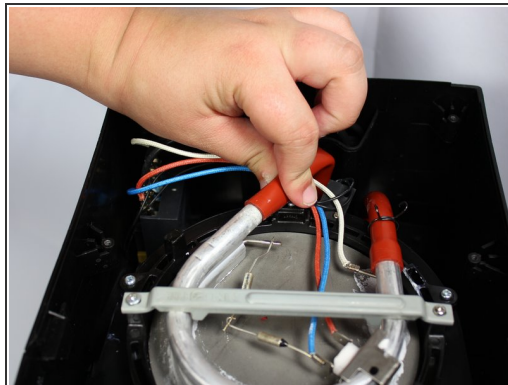


## Step 5 — Rubber Hose



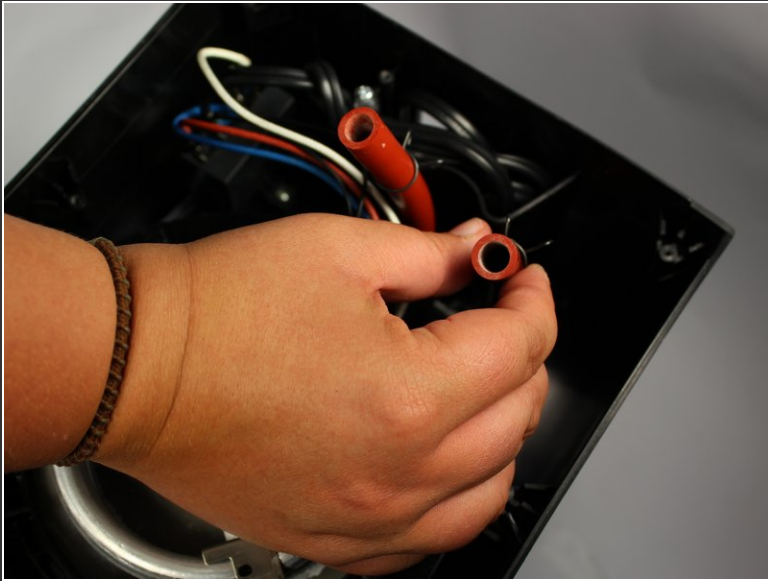
- Locate the metal clamps.
  - Using a pair of pliers or your fingers, slide clamps away from tube opening.
- ☒ All following steps regarding the rubber hoses should be completed for both hoses.

## Step 6



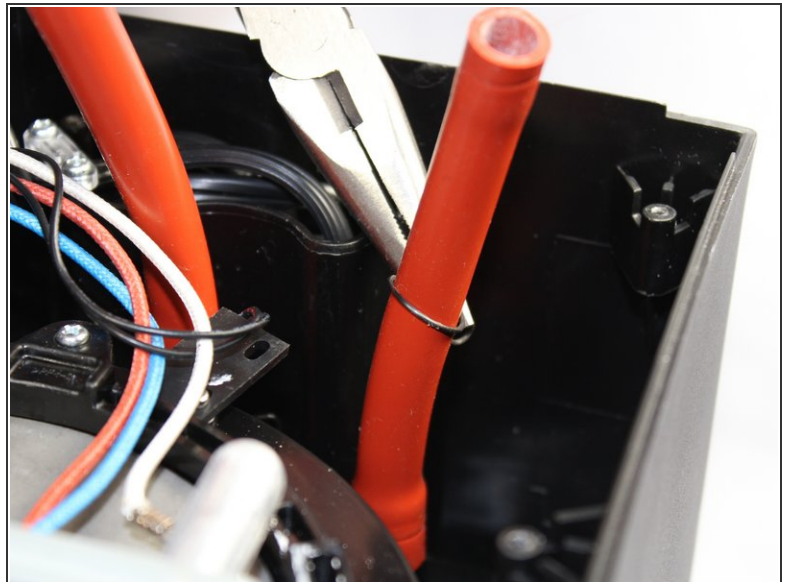
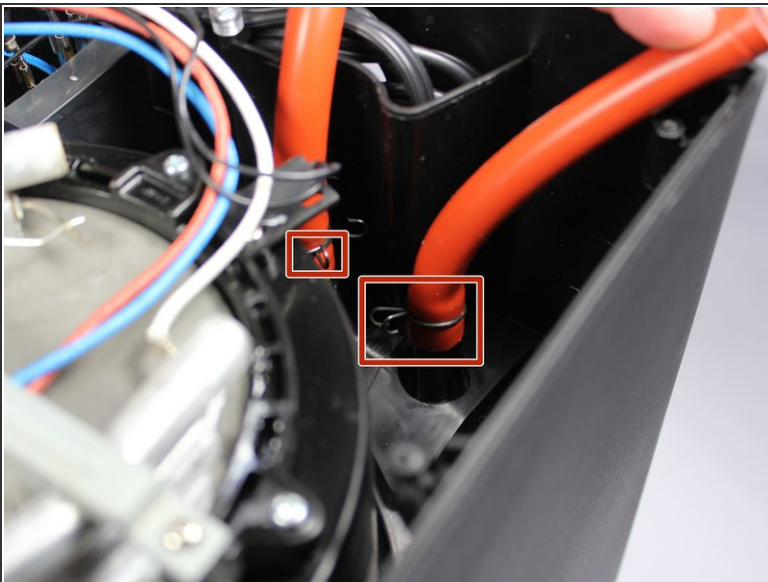
- Using a plastic opening tool, loosen rubber hose from metal tubing.
- Once loosened, grip the hose and pull it from the metal tubing.

## Step 7



- Slide metal clamps off hoses.

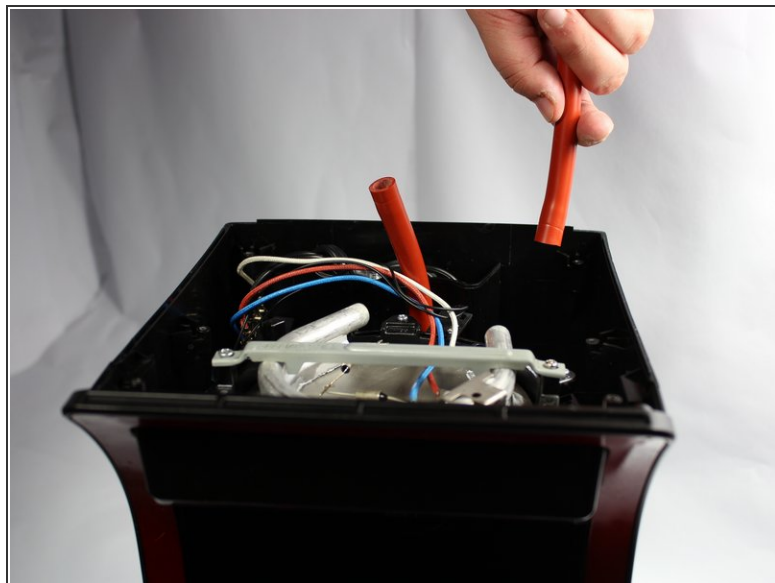
## Step 8



- Locate the other set of metal clamps.
- Using needle nose pliers or your fingers remove these clamps by pinching the clamps and sliding them up the tubes.



## Step 9



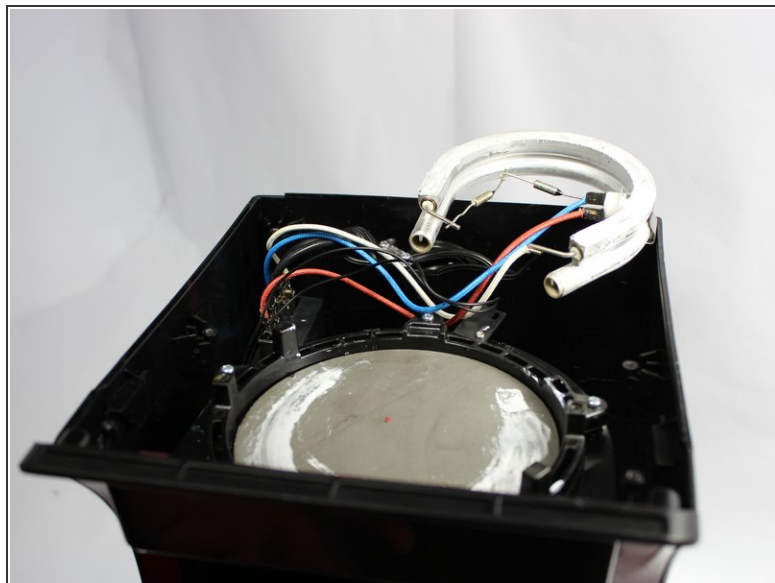
- Grip the hoses and pull them straight up and out.

## Step 10 — Heating Plate



- Locate the two 17mm screws securing the bracing bar.
- Unscrew the screws with a #2 Phillip's head screwdriver and remove the bracing bar

## Step 11



- Using a finger to keep the heating plate in place, grip the metal tubing and gently pull it away from the plate.
- Set the metal tubing aside.

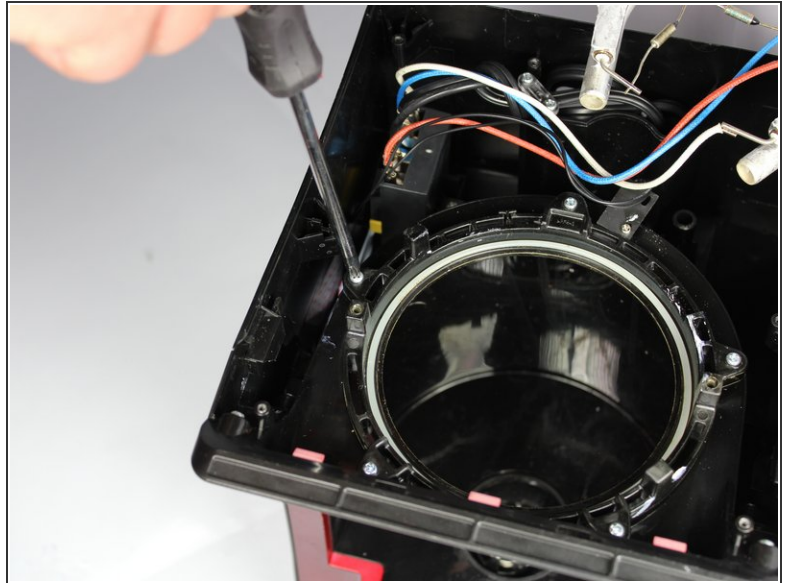
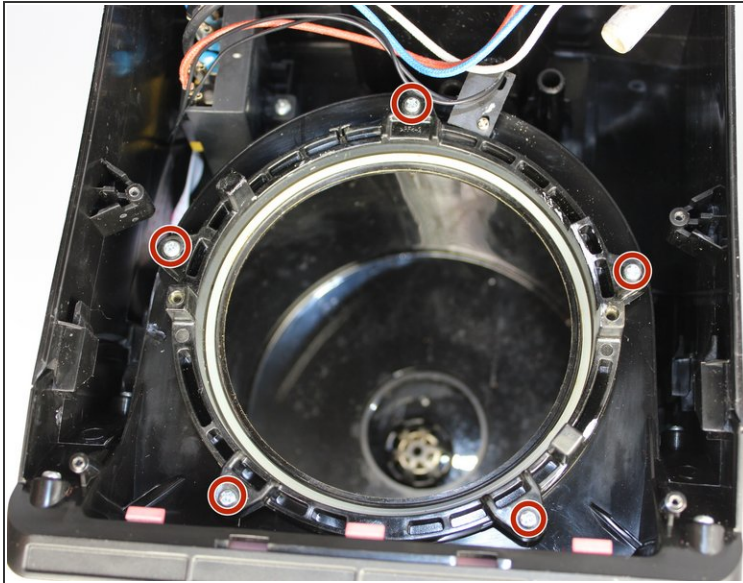
## Step 12



- Push the heating plate up from below and remove.

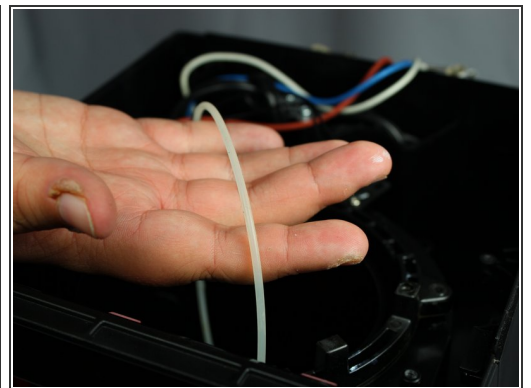
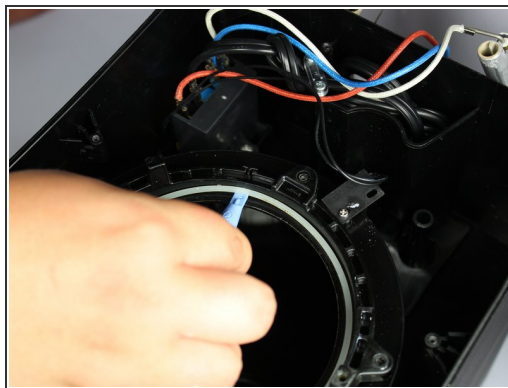
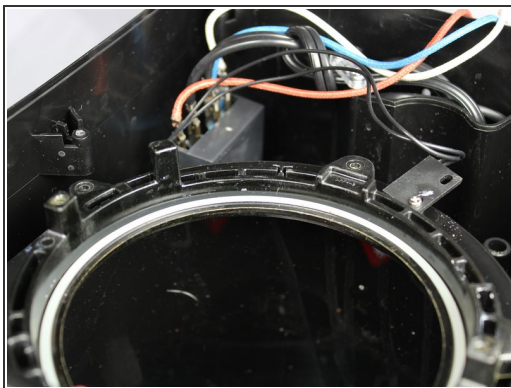


## Step 13 — O-Rings



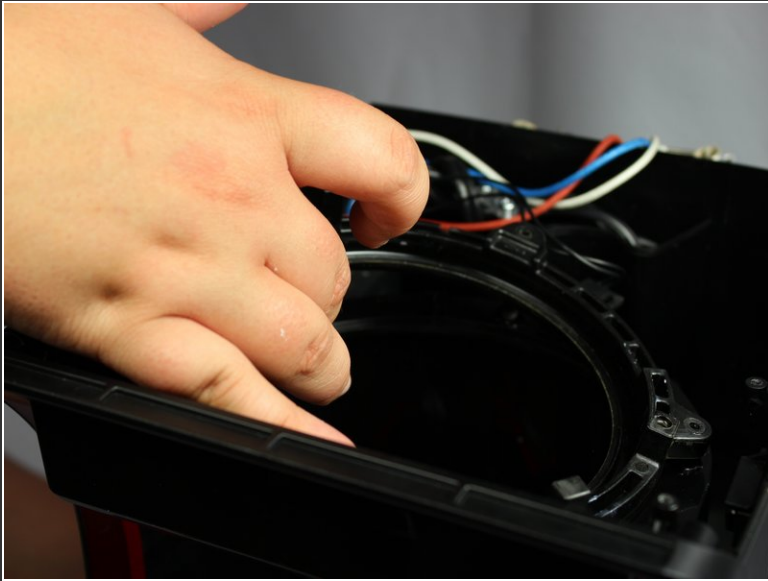
- Locate the five 11.5mm screws securing the plastic ring to the coffee maker.
- Unscrew the screws using a #2 Phillip's head screwdriver.

## Step 14



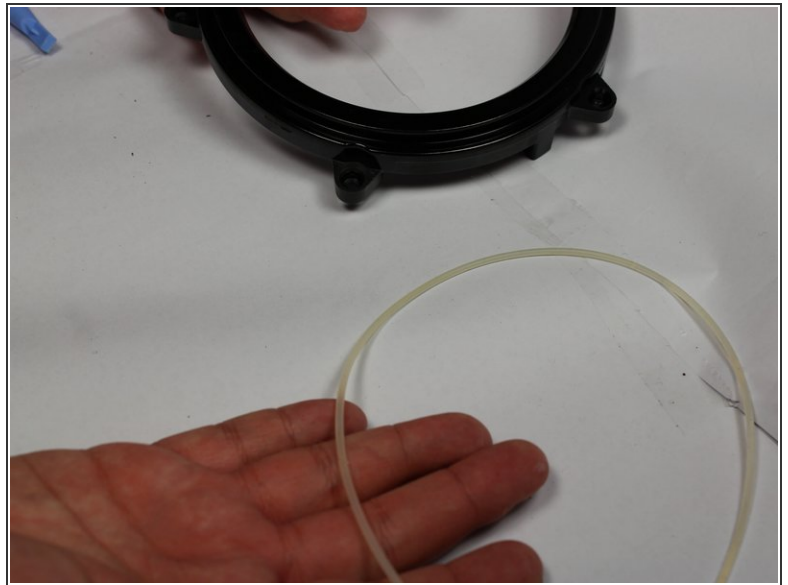
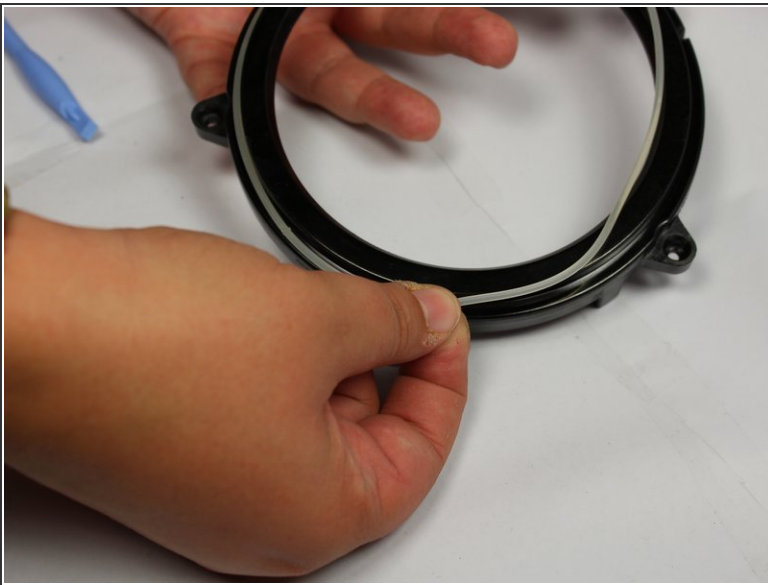
- Using a plastic opening tool, pry the first o-ring out of the plastic ring.
- ❗ If you happen to mix up the o-rings, note that this o-ring is thicker than the second.

## Step 15



- Gripping the plastic ring, pull it free from the coffee maker.
- Flip the plastic ring over.

## Step 16



- Using your fingers, pry the other o-ring free from the plastic ring.
- i** If you happen to mix up the o-rings, note that this o-ring is thinner than the first.

To reassemble your device, follow these instructions in reverse order.