



Pioneer R1 Battery Replacement

This guide will lead you through the steps necessary to replace the R1's battery.

Written By: Christopher Rosario



INTRODUCTION

This guide will demonstrate how to access and replace the R1's battery.



TOOLS:

- [Spudger](#) (1)
- [Precision Soldering Iron](#) (1)
- [iFixit Opening Tools](#) (1)



PARTS:

- [Pioneer R1 battery](#) (1)

Step 1 — Battery



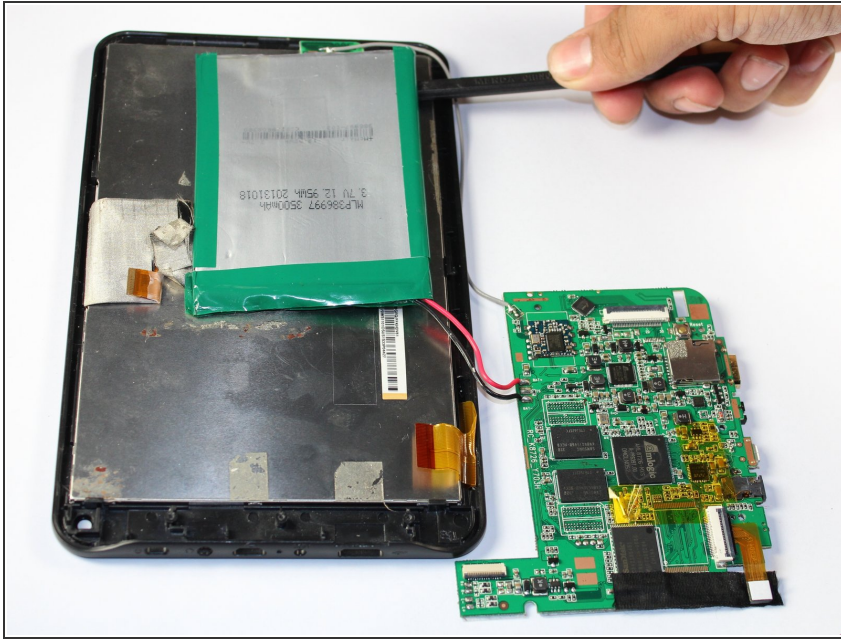
- Insert your plastic spudger into the opening near the HDMI port.
 - Gently pry the back cover of the R1 from the front by using the spudger along the edges.
- ⚠ Do not pull the back cover straight off the R1 as components of the speakers will be attached to both sides.

Step 2



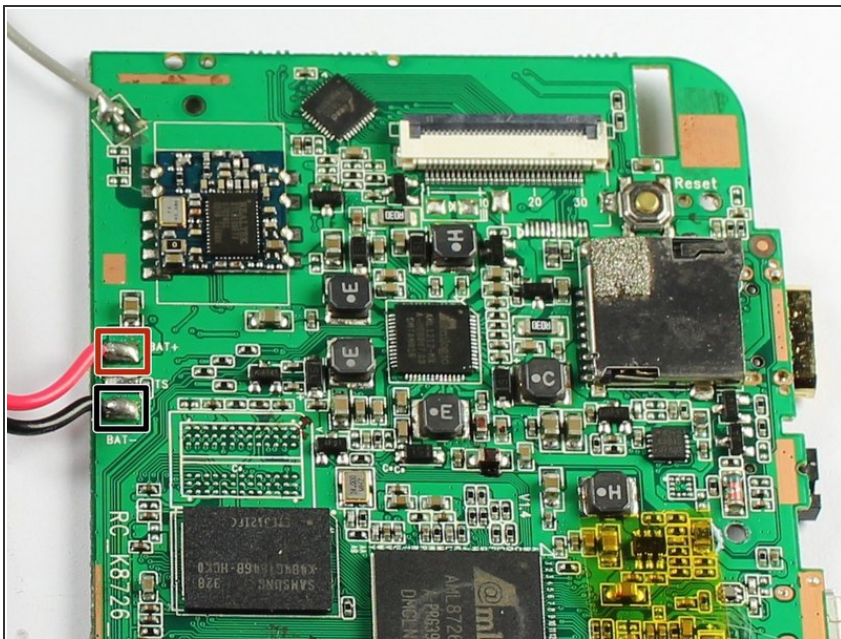
- Lay the R1 flat like an open book.
- ⓘ This will prevent the speakers from becoming disconnected from the motherboard.

Step 3



- Slide a strong thin object, like a thin spudger, between the battery and the display.
- Slide the object along the length of the battery to remove it from the display.
- ⚠ The adhesive holding the battery in place is strong and the battery is quite soft. Take care not to break open the battery.
- Disengage the battery cables from the motherboard.

Step 4



- Solder the black cable to the nodule labeled BAT+.
- Solder the red cable to the nodule labeled BAT-.
- ⚠ Do not allow the solder from one nodule to touch the other, this may cause the battery to explode.

To reassemble your device, follow these instructions in reverse order.