



# Android tablet Nobis NB09 Screen Replacement

This is a guide on how to perform a screen...

Written By: Enea Osmann



# INTRODUCTION

This is a guide on how to perform a screen replacement on a Nobis NB09 tablet. The screen is the most important part of the device when it comes to interacting with the tablet and users operating it in the first place. If the screen doesn't work properly, then it becomes almost impossible to use the device at all.

It is advised to be cautious of possible shattered glass, and to use ESD-safe tools, as well as knowing [how to properly use an anti-static mat and wristband](#).

---

## TOOLS:

[Spudger](#) (1)

[Tweezers](#) (1)

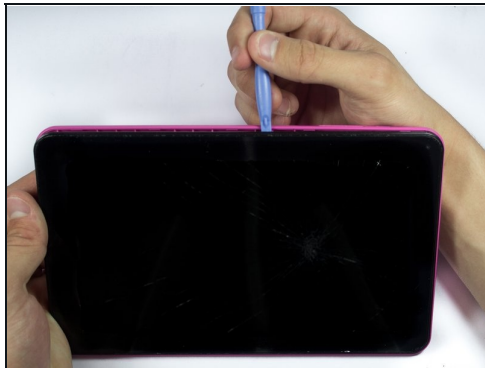
[iFixit Opening Tool](#) (2)

[T4 Torx Screwdriver](#) (1)


[Phillips #00 Screwdriver](#) (1)

---

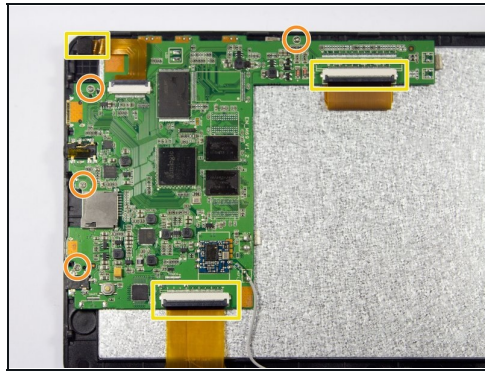
## Step 1 — Screen



- Remove the two 00 Phillips screws located on the right side of the tablet.
- Use the plastic opening tools to loosen and then pry the back of the tablet off.

 When prying off the back of the tablet, be careful around the tablet's ports. Too much pressure can cause cracks.

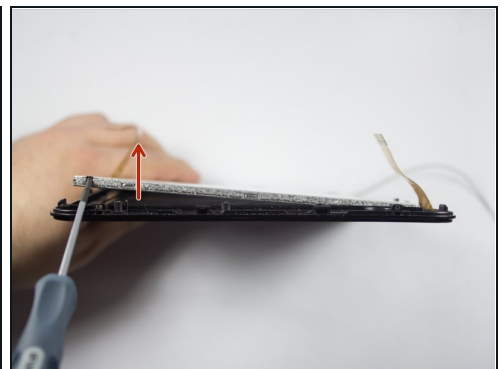
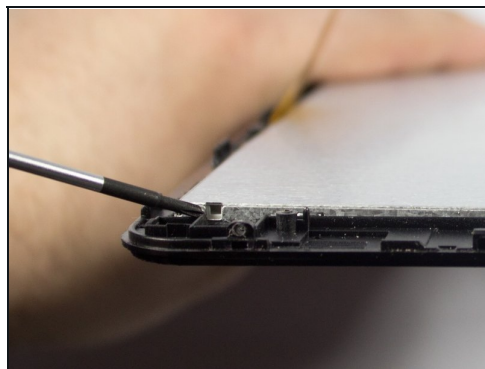
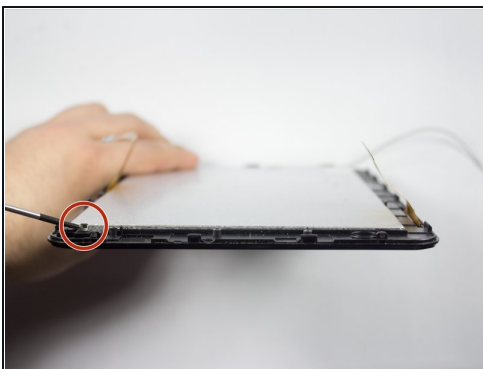
## Step 2



⚠ It is recommended that a grounding bracelet be used in order to avoid damage to the device's circuits through ESD (Electro-Static Discharge)

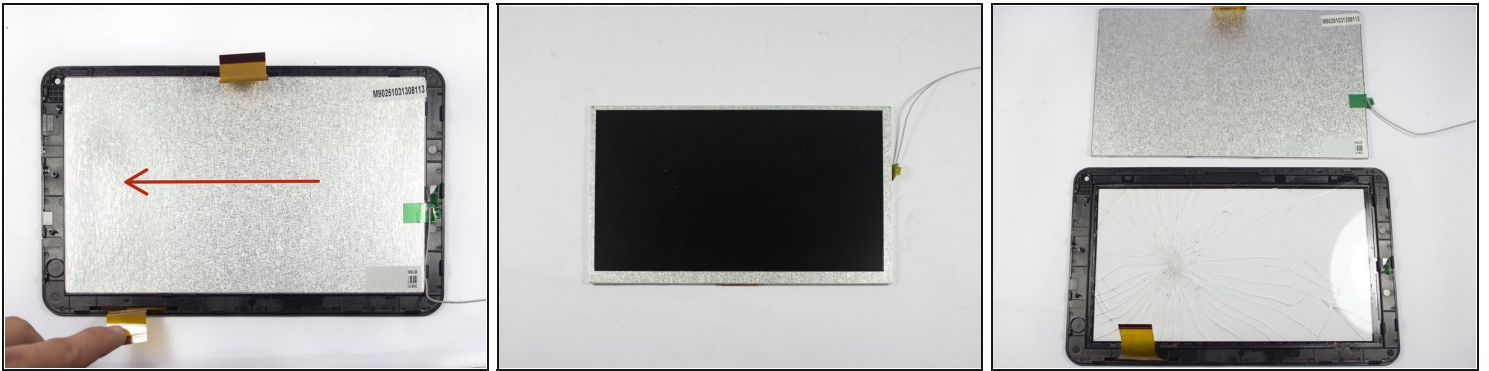
- Remove the electrical tape covering the motherboard.
- Remove the four 4.0 mm T4 Torx screws holding the motherboard to the front half of the tablet.
- Remove any remaining adhesive tape on the exposed area.
- Disconnect the ribbon cable attachments by lightly pushing up the locking arm (black tab) on each then gently detaching the pin connectors.

## Step 3



- Find the notch on the digitizer, located on the left side of the device.
- Use the Phillips Screwdriver to gently push the notch and lift the digitizer from the screen.

## Step 4



- Gently slide the digitizer from its clasps to remove it from the screen.
- The digitizer should now be removed separately from the screen.

---

To reassemble your device, follow these instructions in reverse order.