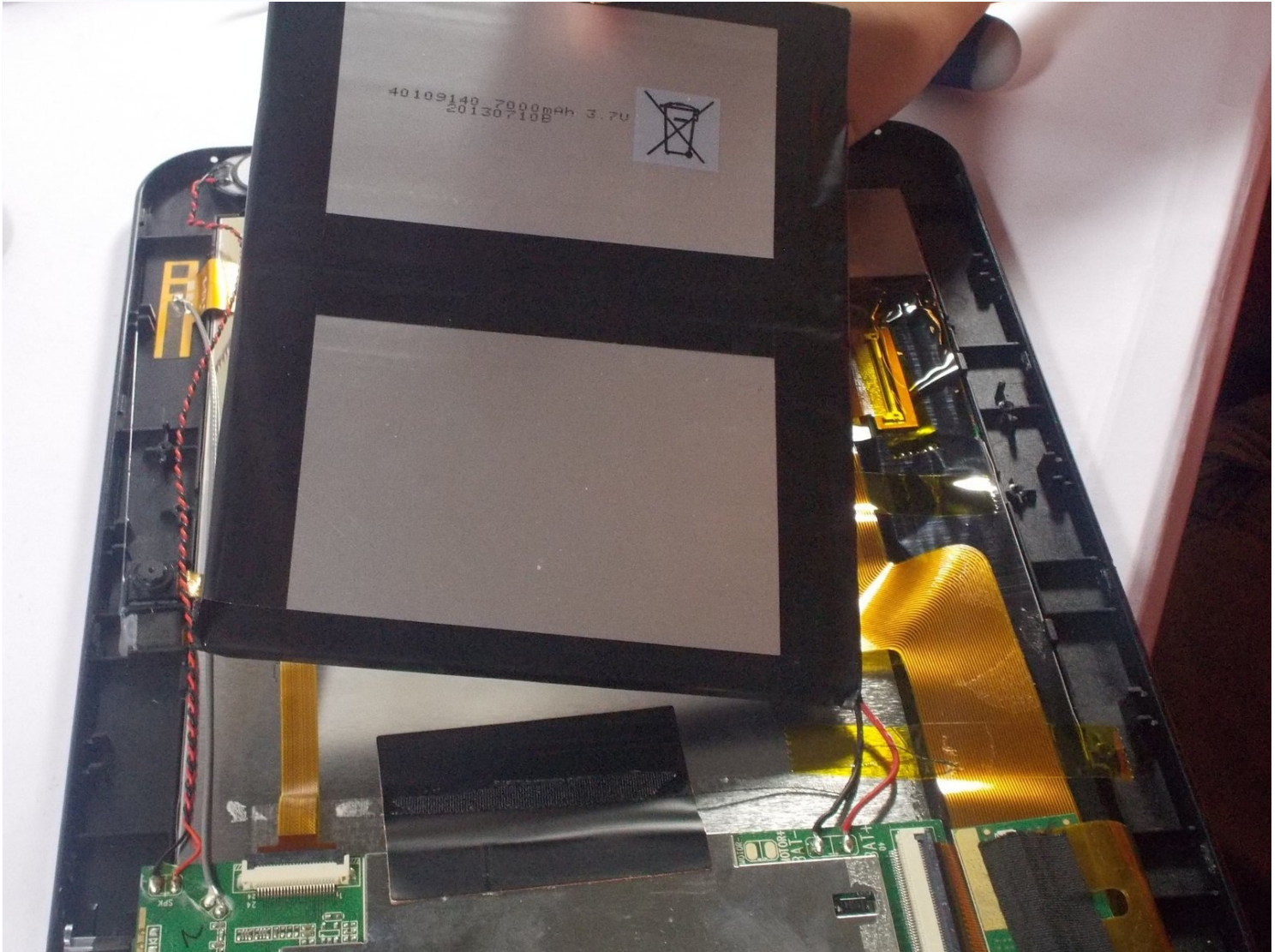




Kurio 10S Battery Replacement

Over time, the battery may wear out, or be...

Written By: Timothy Kramer



INTRODUCTION

Over time, the battery may wear out, or be damaged, and must be replaced in order for your device to function. Doing this may also help if your device runs out of battery very quickly or if you need to access other components in the tablet. This guide will walk you through the steps how to replace the battery in you Kurio 10S.

TOOLS:

[Phillips #1 Screwdriver](#) (1)

[iFixit Opening Tool](#) (1)

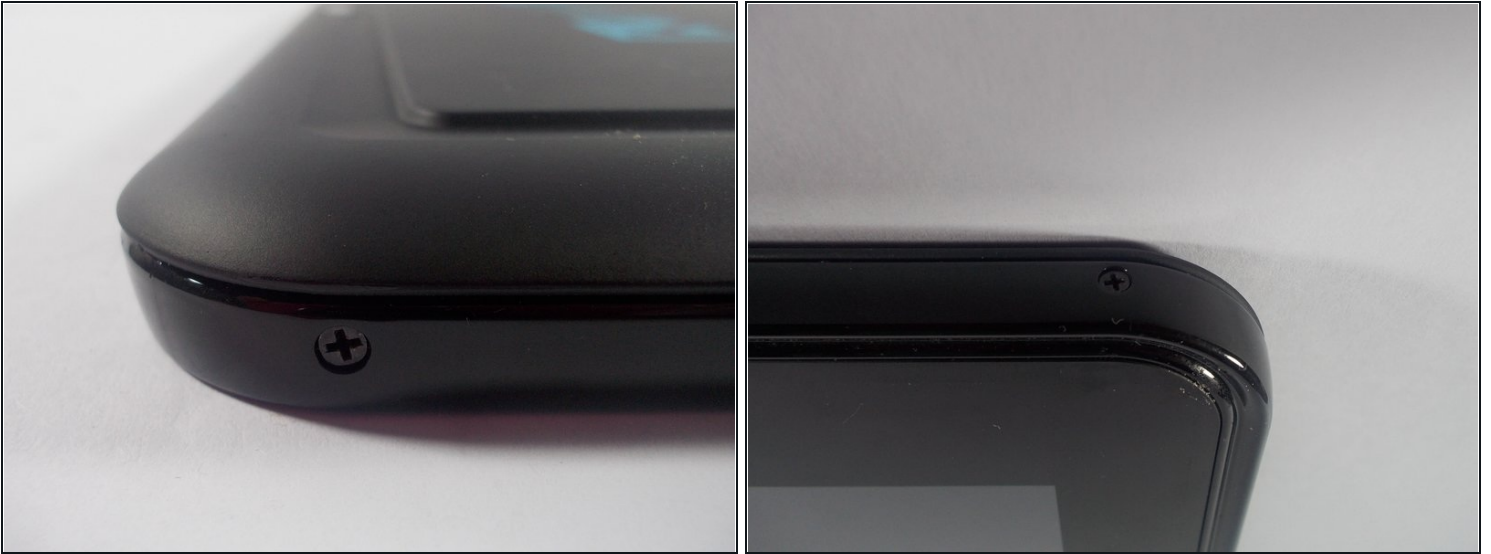
[Soldering Iron](#) (1)

Step 1 — Back Cover



- Turn the device over and place it with the screen down on a flat surface that is clean so the screen does not get scratched.

Step 2



- Locate the four screws, two on each side.
- Using the philips head screwdriver, carefully remove each screw and keep them together in a safe location.

Step 3



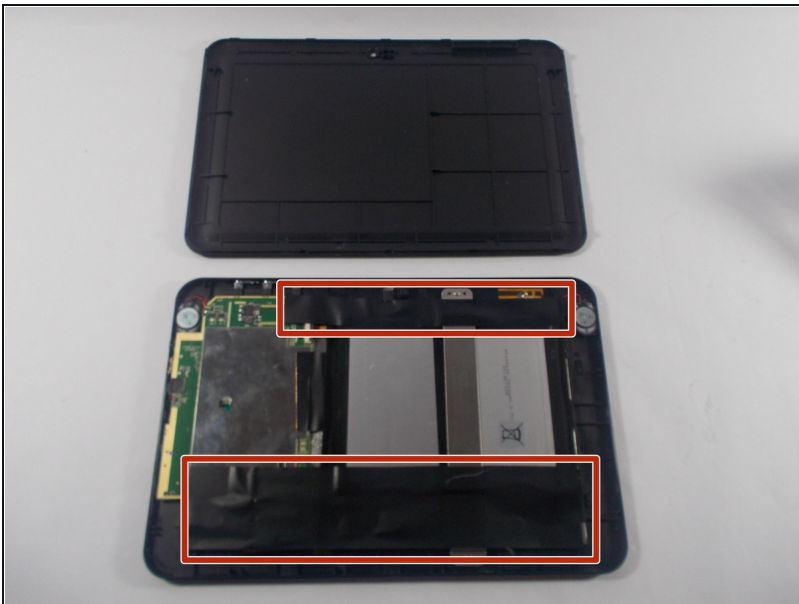
- Once all screws are removed, use a spudger to get under a corner and unclip the hooks.
- Once the spudger is under the cover, slide it all the way around the device, pushing lightly into the device making sure it stays under the cover until all the clips are removed.
- ① The back cover is difficult to remove, so do not be afraid of using some force once all of the clips have been removed.

Step 4



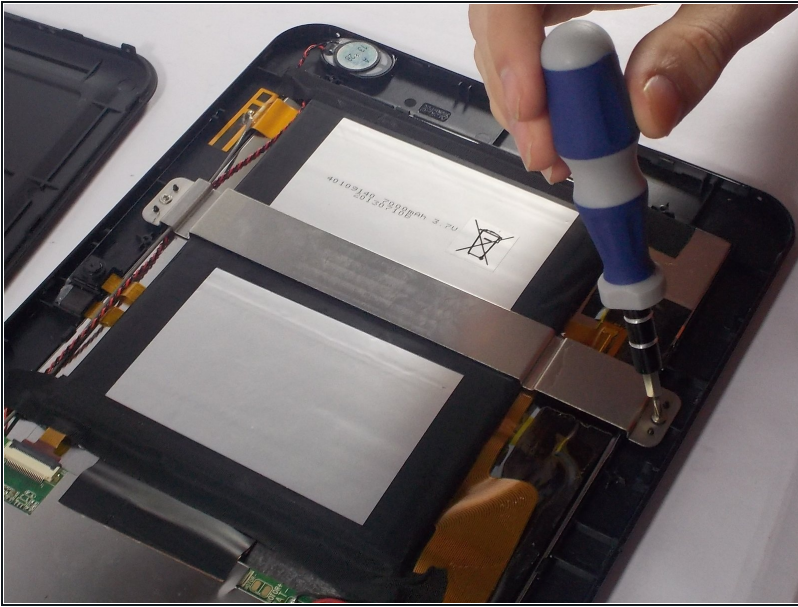
- The back cover should then be able to easily be removed from the device and you should see the battery and other internal components.

Step 5 — Battery



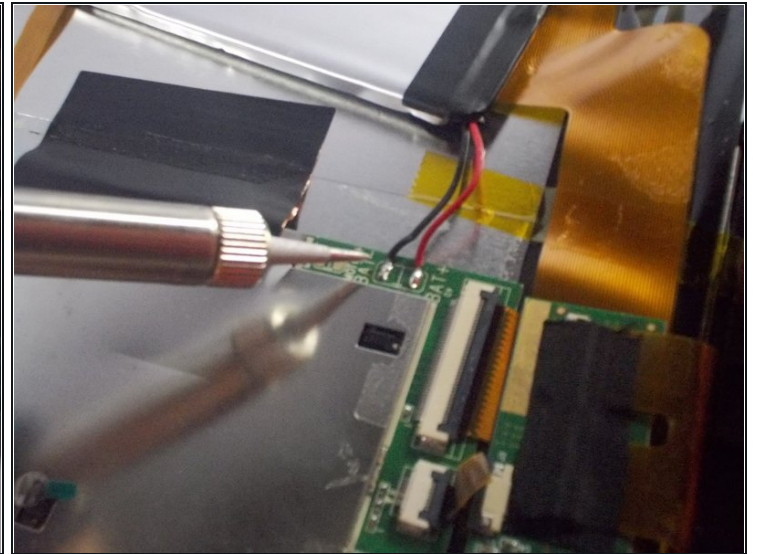
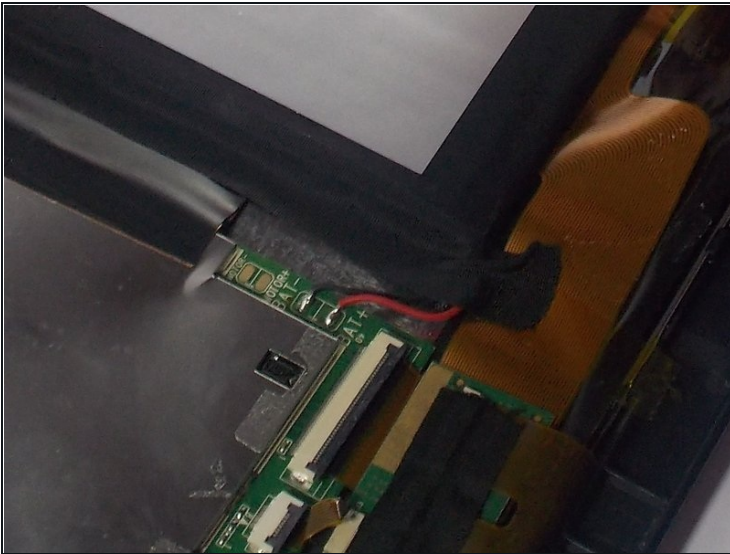
- Remove the electrical tape surrounding the battery.
⚠ Beware of wires under the electrical tape and around the battery that may be fragile.

Step 6



- Once the electrical tape is removed there should be a metal bar across the battery.
- Using a philips head screwdriver, remove the screws on both ends and take off the metal bar.

Step 7



- Locate the red and black wire connections where the battery is connected to the motherboard.
- Now remove the red and black wires by soldering the ends of the wires off where they connect to the motherboard.

⚠ Soldering irons run hot, and when removing solder from the board make the components hot, so take care when using one.

To reassemble your device, follow these instructions in reverse order.