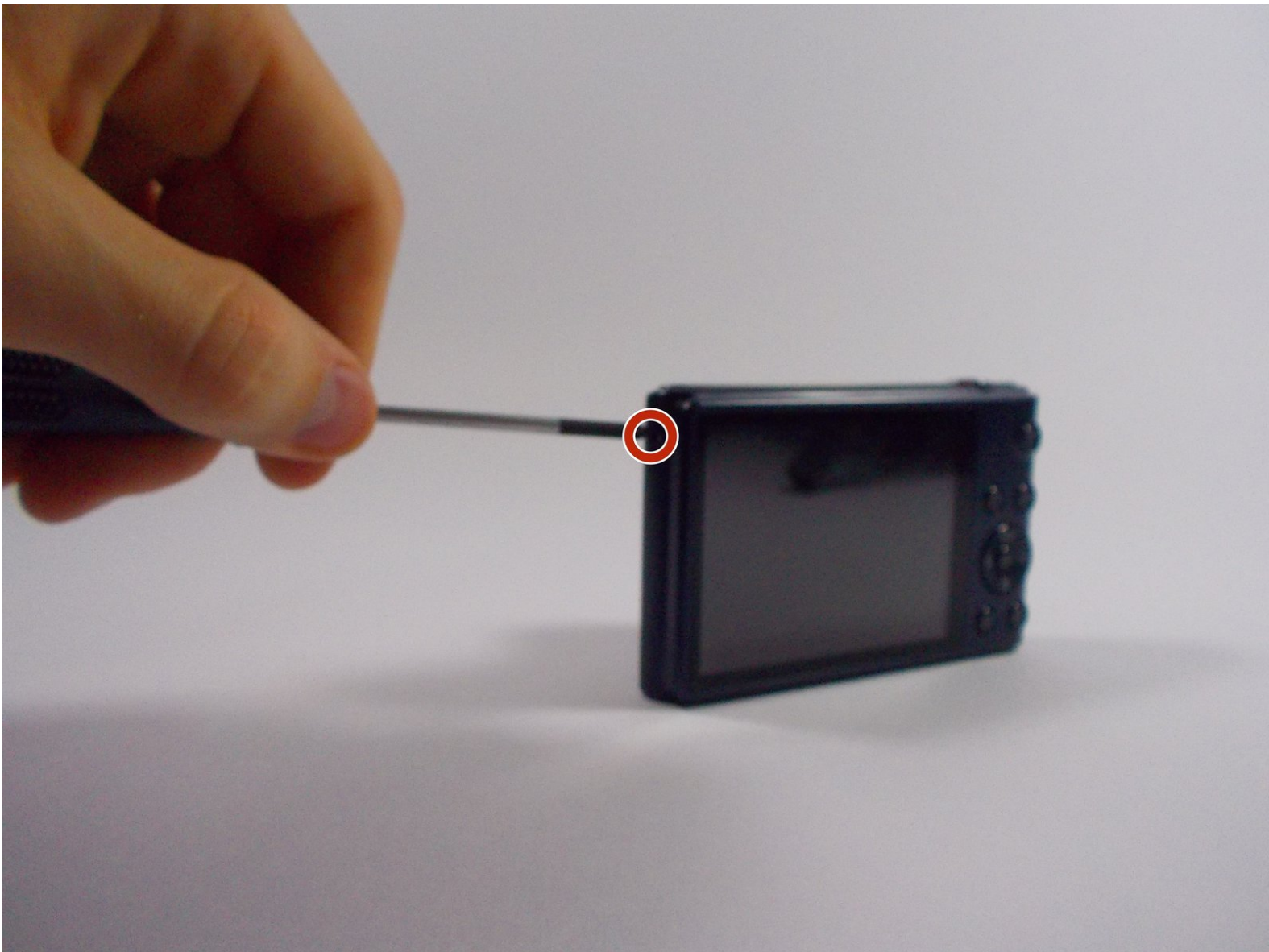




Samsung ST150F Outer Case Replacement

This guide will show you how to properly replace the plastic and metal shells on your camera should they have been damaged.

Written By: Nicholas Pavao

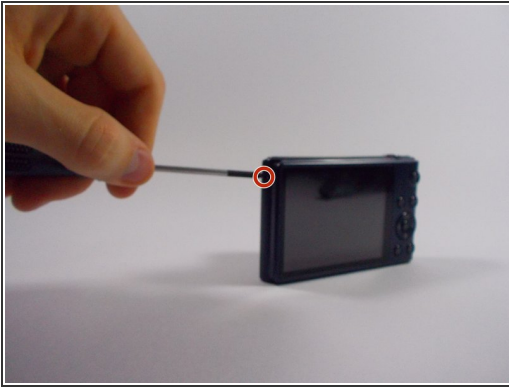




TOOLS:

- [Phillips #0 Screwdriver](#) (1)
 - [Spudger](#) (1)
-

Step 1 — Outer Casing



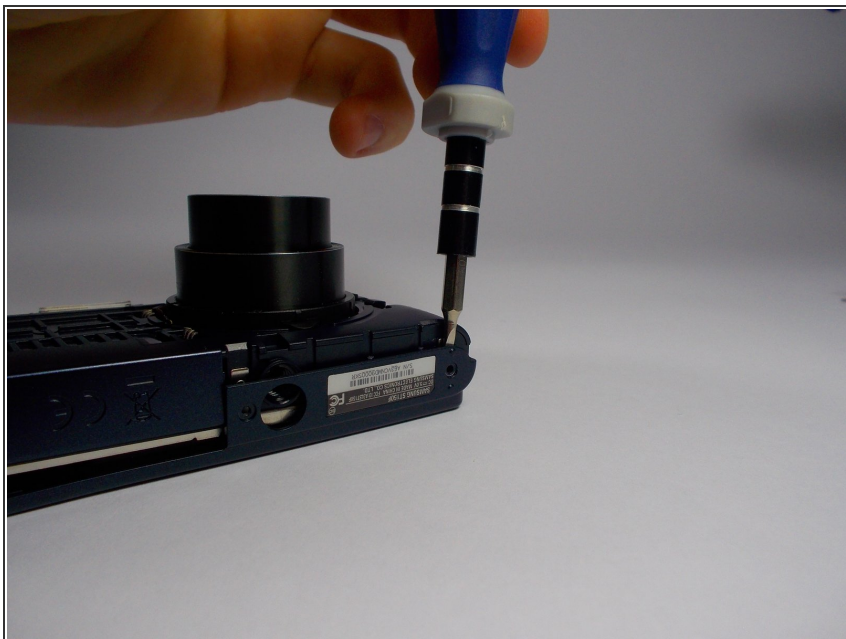
- Remove these screws from the camera using a phillips head screwdriver.

Step 2



- Lay the camera down on the table and remove the metal shell from the front.

Step 3



- Wedge a spudger/flathead screwdriver inside of the shell where the screws were to pry the shell off of the back.

Step 4



- Remove the shell the from the back of the camera.

To reassemble your device, follow these instructions in reverse order.