



Dell Latitude E4200 SSD Replacement

This guide will go through the necessary steps in order to replace the SSD.

Written By: John Shellenberger



INTRODUCTION

Follow these steps in order to successfully replace the SSD of your laptop.



TOOLS:

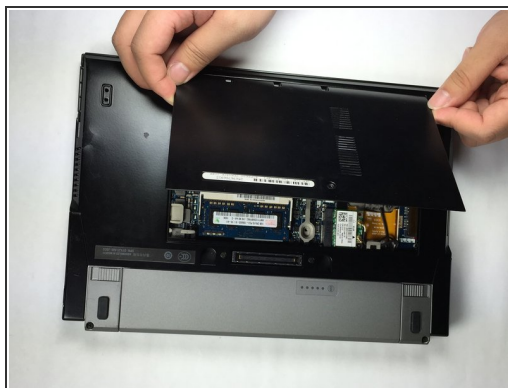
- [Phillips #0 Screwdriver](#) (1)
-

Step 1 — Back Panel



- Use PH0 screwdriver to unscrew the 4.49x7.88 mm screw in the middle of the back panel.

Step 2



- Place thumbs flat on the front side of the back panel (the side to open the laptop).
- Push panel upwards sliding it out of the locked position.
- Lift panel out of socket.

Step 3



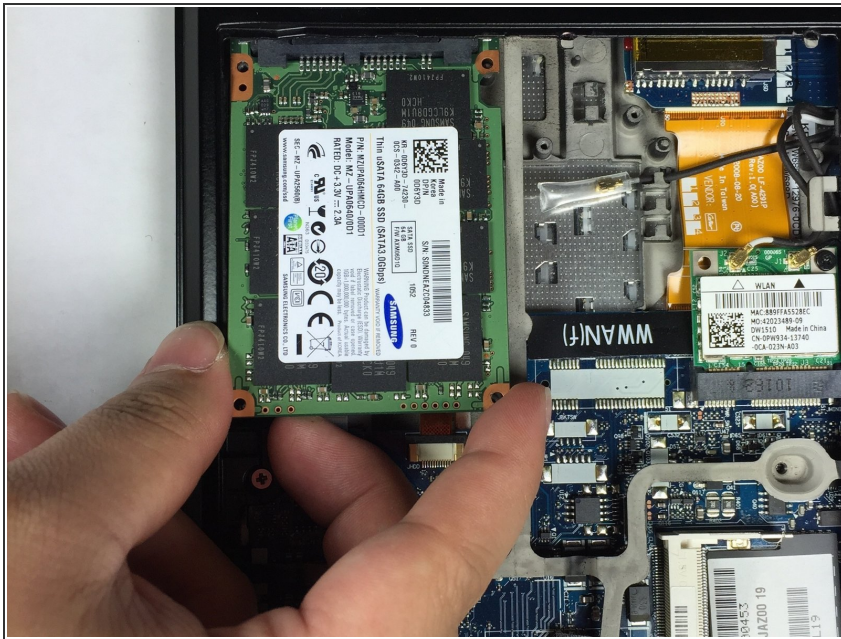
- Remove panel and screw from the device. This opens up the main board of the device.

Step 4 — SSD



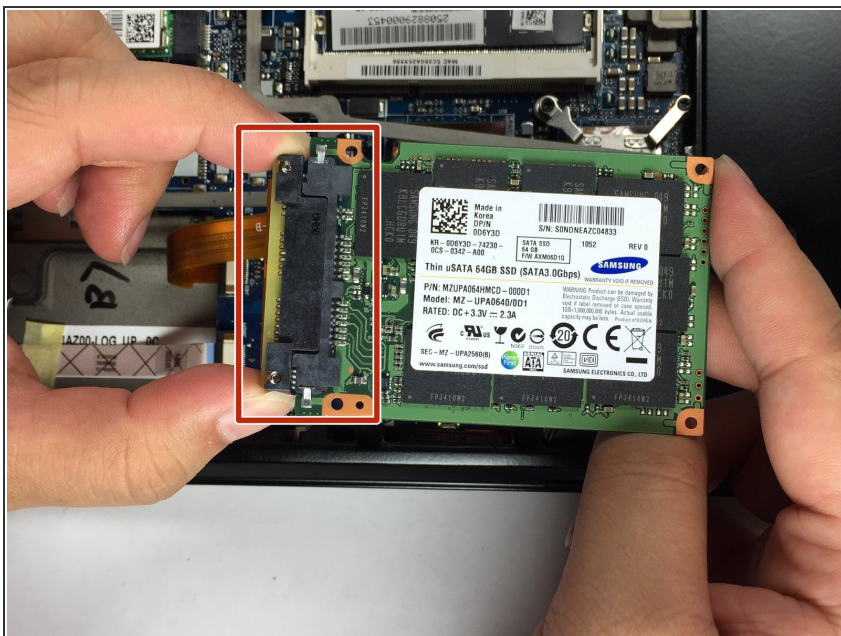
- Unscrew the two 4.10x4.05 mm screws holding the SSD in place.

Step 5



- Using your finger and thumb lift the hard drive out of the computer but do not disconnect the attached connector to the computer.

Step 6



- By applying pressure to the sides of the connector, pull the connector apart from the SSD.

To reassemble your device, follow these instructions in reverse order.