



# Dell Latitude E4200 Keyboard Replacement

Follow the guide steps to remove the computer's keyboard.

Written By: Michelina Carbone





## TOOLS:

- [Flathead Screwdriver](#) (1)
  - [Phillips #00 Screwdriver](#) (1)
-

## Step 1 — Power Button Panel



- Open computer.

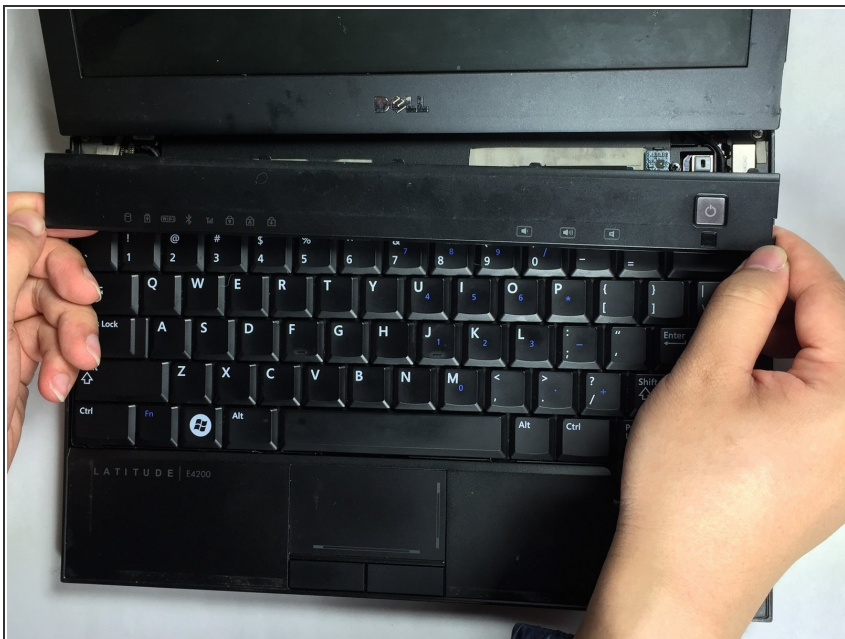
## Step 2



- Slide any tool with a flat surface under the side bottom right corner of front panel and pry the front panel out of place.
- ⓘ A small flat head screwdriver would be an ideal tool to use during this step.

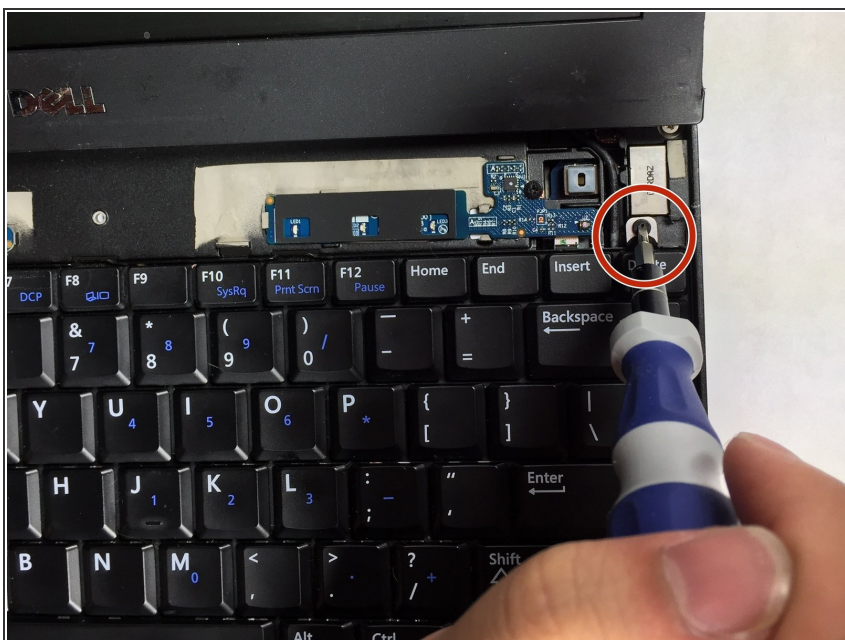


## Step 3



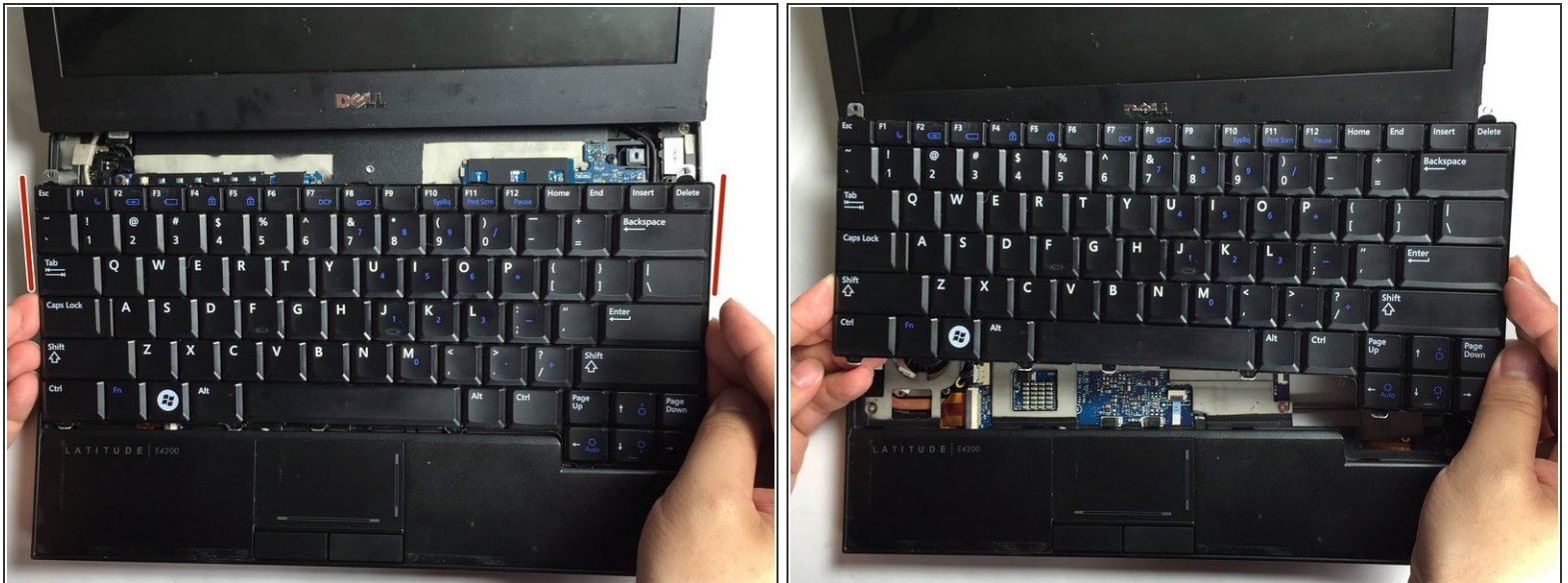
- Once out of place, position your thumbs under the bottom of the panel and pull upwards.

## Step 4 — Keyboard



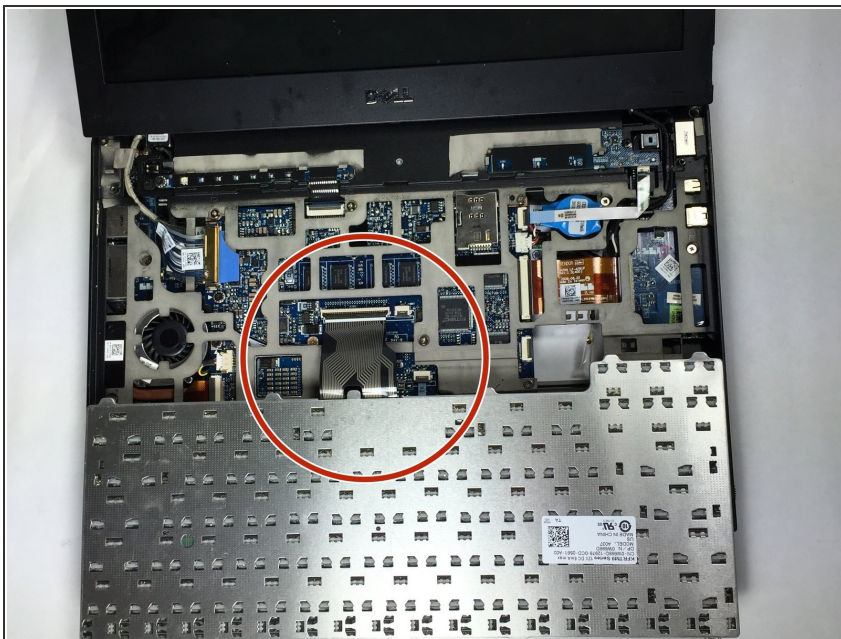
- Use a PH00 screwdriver to unscrew the screw.

## Step 5



- Use your hands to gently lift the keyboard from the device.

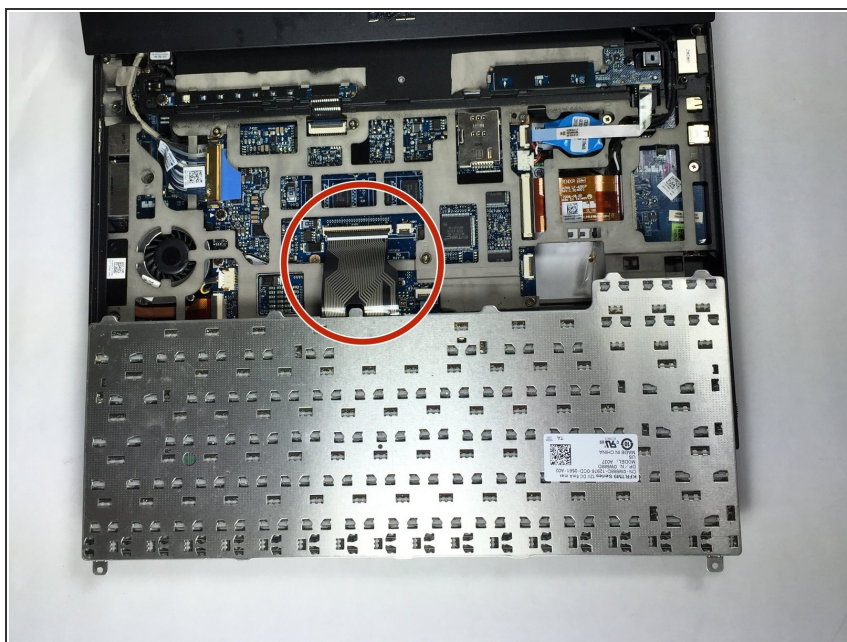
## Step 6



- Gently turn the keyboard over.

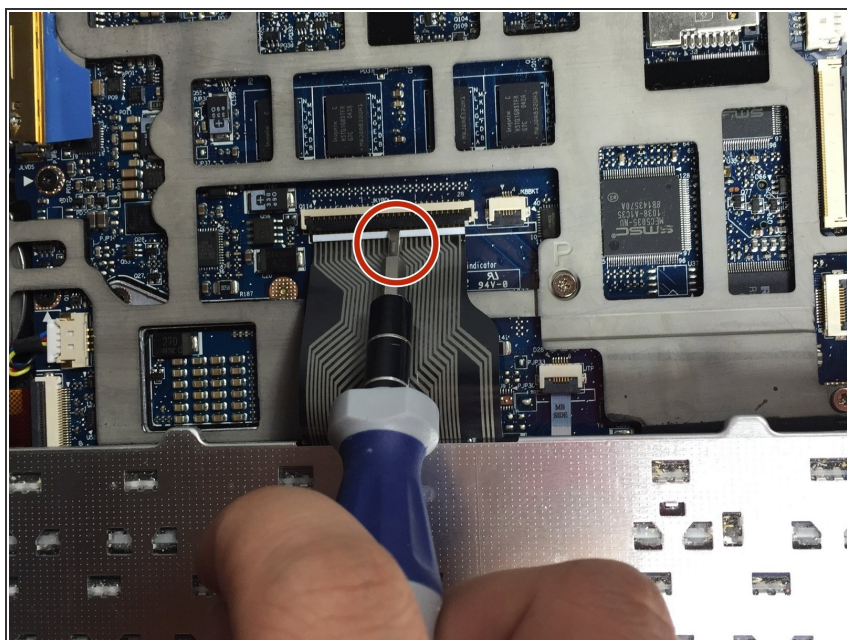


## Step 7



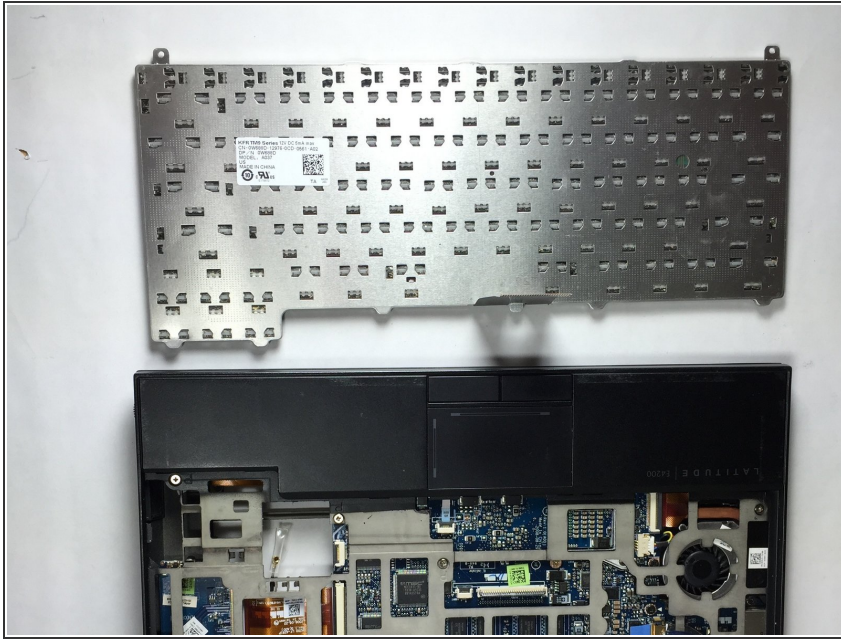
⚠ Be careful not to disconnect the keyboard connector.

## Step 8



- Use a flat head screwdriver to flip the keyboard connector up. This will allow you to disconnect the keyboard and remove it.

## Step 9



- Completely lift the keyboard from the device, as they are now disassembled.

To reassemble your device, follow these instructions in reverse order.