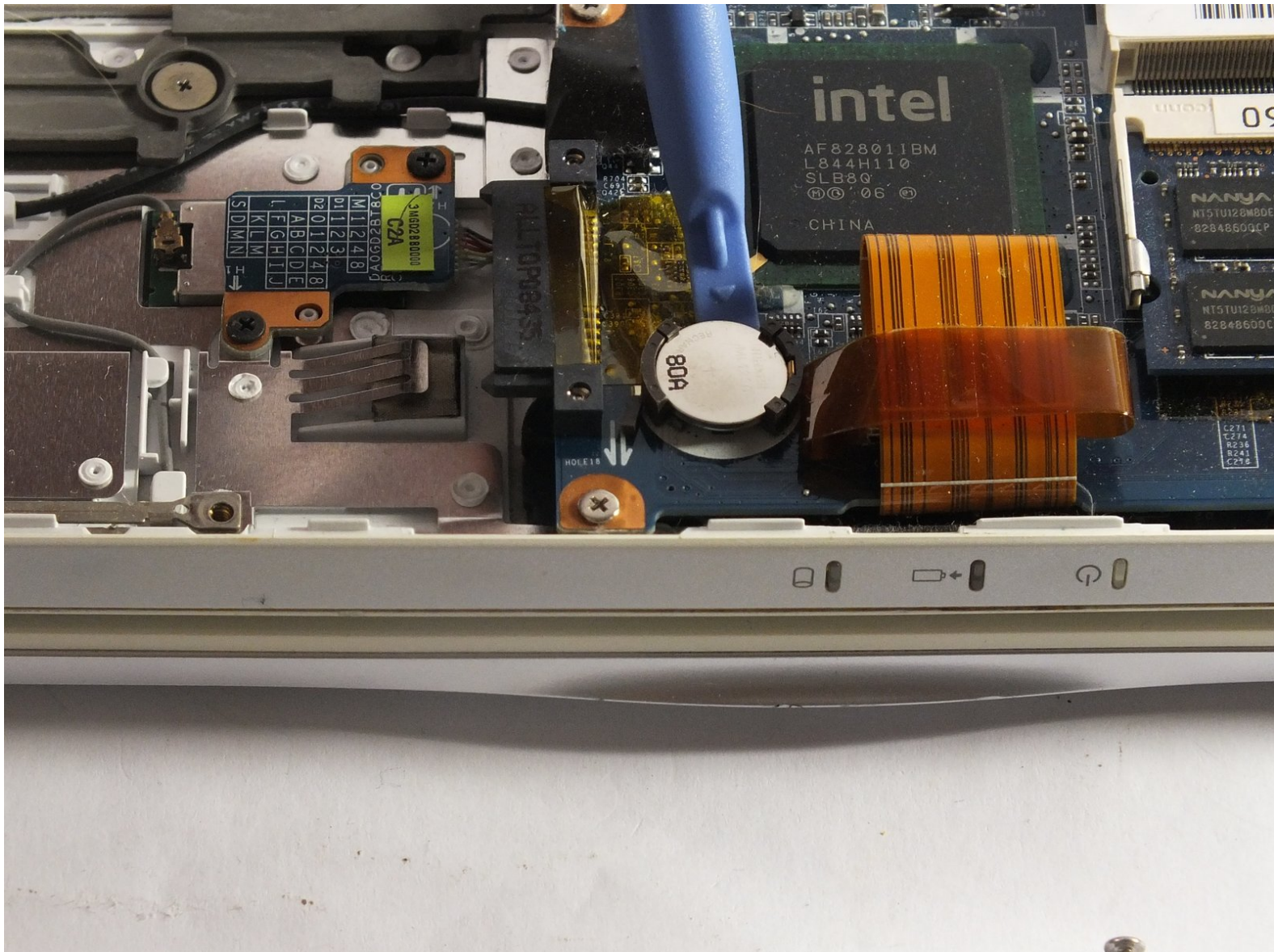




Sony VAIO PCG-3E2L BIOS Battery Replacement

The purpose of this guide is to help the reader replace the BIOS Battery of the device.

Written By: Chengyang Chen



INTRODUCTION

This guide will aid readers to replace BIOS Battery of the device when the BIOS Battery dead.



TOOLS:

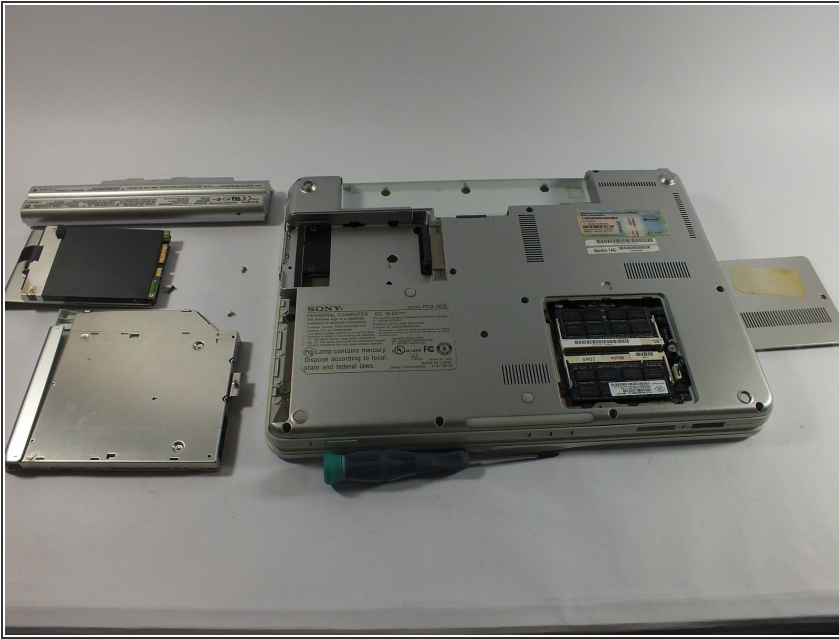
- [Phillips #00 Screwdriver](#) (1)
- [iFixit Opening Tools](#) (1)



PARTS:

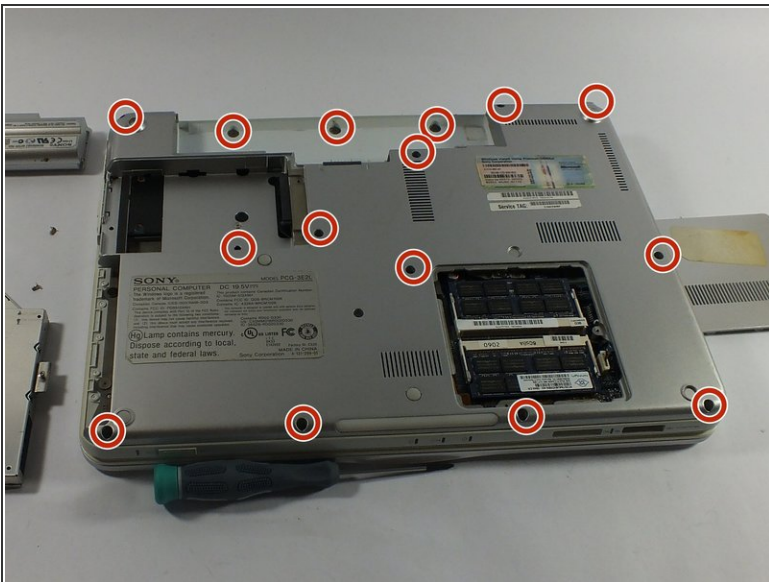
- [CR 1220 Battery](#) (1)

Step 1 — BIOS Battery



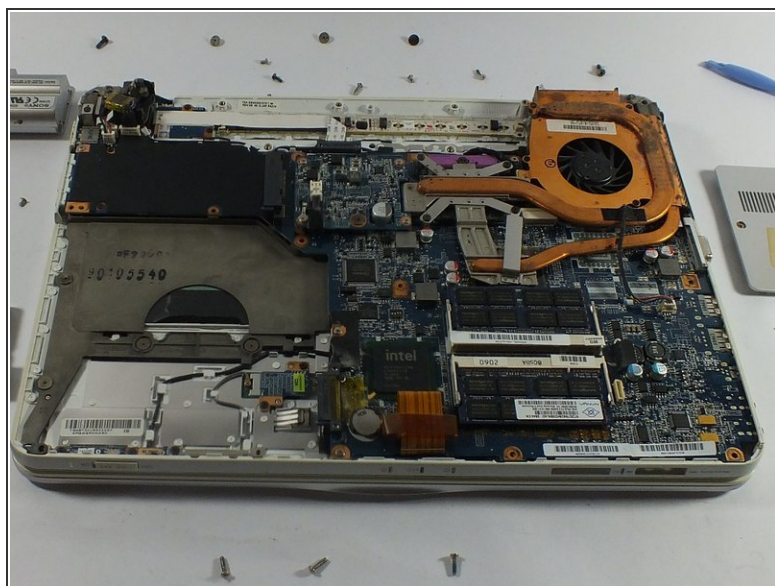
- Follow [Sony VAIO PCG-3E2L Battery Replacement](#) to the device to remove the battery
- Follow [Sony VAIO PCG-3E2L Hard Drive Replacement](#) to remove the Hard Drive.
- Follow [Sony VAIO PCG-3E2L CD Drive Replacement](#) to remove the CD Drive
- Follow [Sony VAIO PCG-3E2L RAM Replacement](#) to remove memory cover.

Step 2



- Using a #00 Phillips screwdriver, remove the screws

Step 3

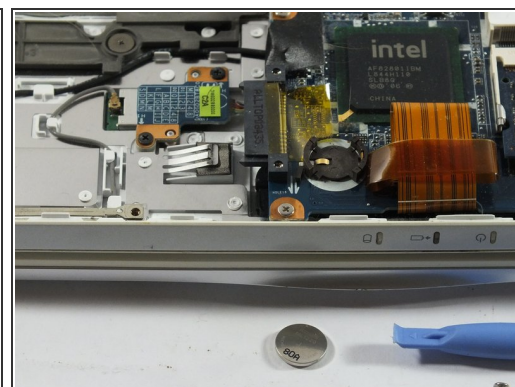
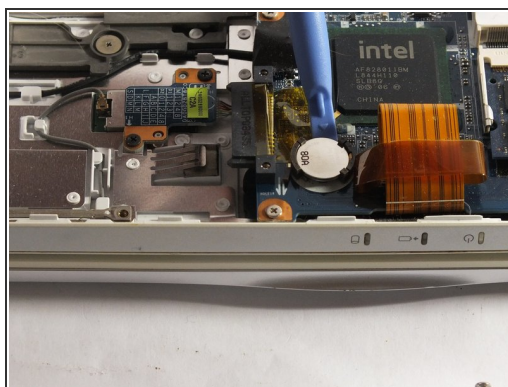
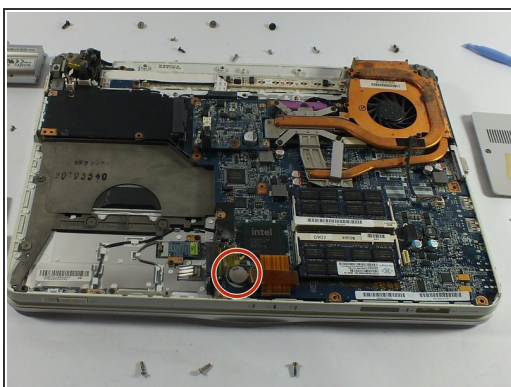


- Lift the back cover panel.

⚠ DO NOT force open the back panel.

- ⓘ The back cover panel should be lift up easily. If you feel there is resistance, please check if you have all screws removed.

Step 4



- Use the Plastic Opening Tools to help pop the BIOS Battery.

To reassemble your device, follow these instructions in reverse order.