



# Sony VAIO PCG-3E2L Hard Drive Replacement

The purpose of this guide is to help the reader replace the Hard Drive of the device.

Written By: Chengyang Chen



## INTRODUCTION

This guide will aid readers to replace or upgrade Hard Drive of the device when the Hard Drive is not functioning properly.



### TOOLS:

- [Phillips #00 Screwdriver](#) (1)



### PARTS:

- [2.5" Serial ATA Hard Drive](#) (1)

## Step 1 — Hard Drive



- Using a #00 Phillips screwdriver, remove the screw

## Step 2



- Remove the cover

## Step 3



- Using a #00 Phillips screwdriver, remove the screw

## Step 4

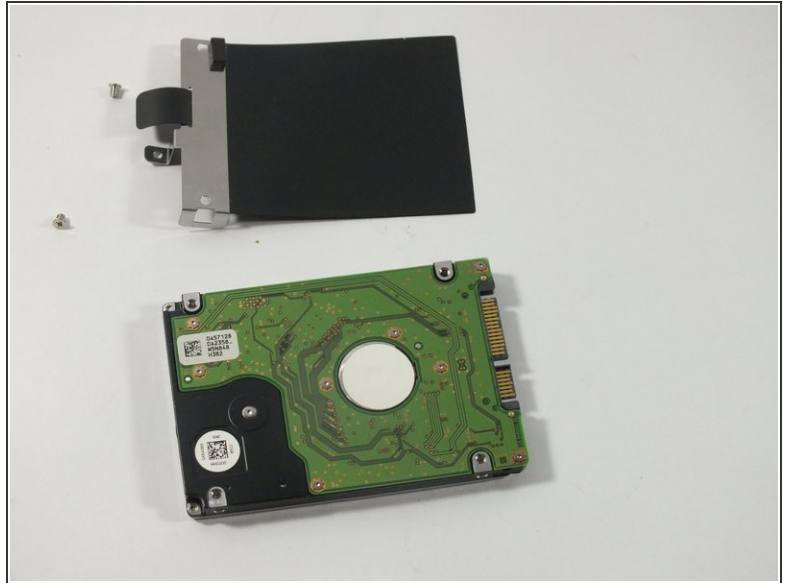
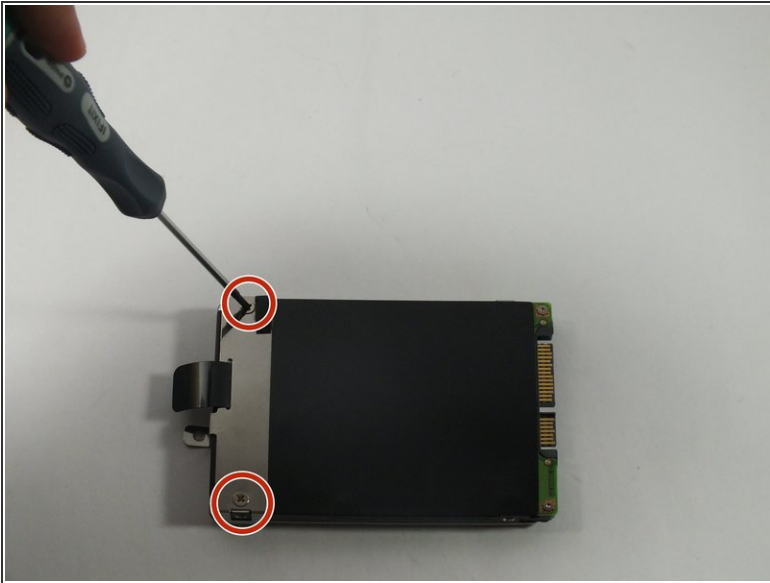


- Grab the black plastic handle and pull the hard drive out slowly.

⚠ Only pull the hard drive horizontally. Do not lift the hard drive vertically



## Step 5



- Using a #00 Phillips screwdriver, remove the screw

To reassemble your device, follow these instructions in reverse order.